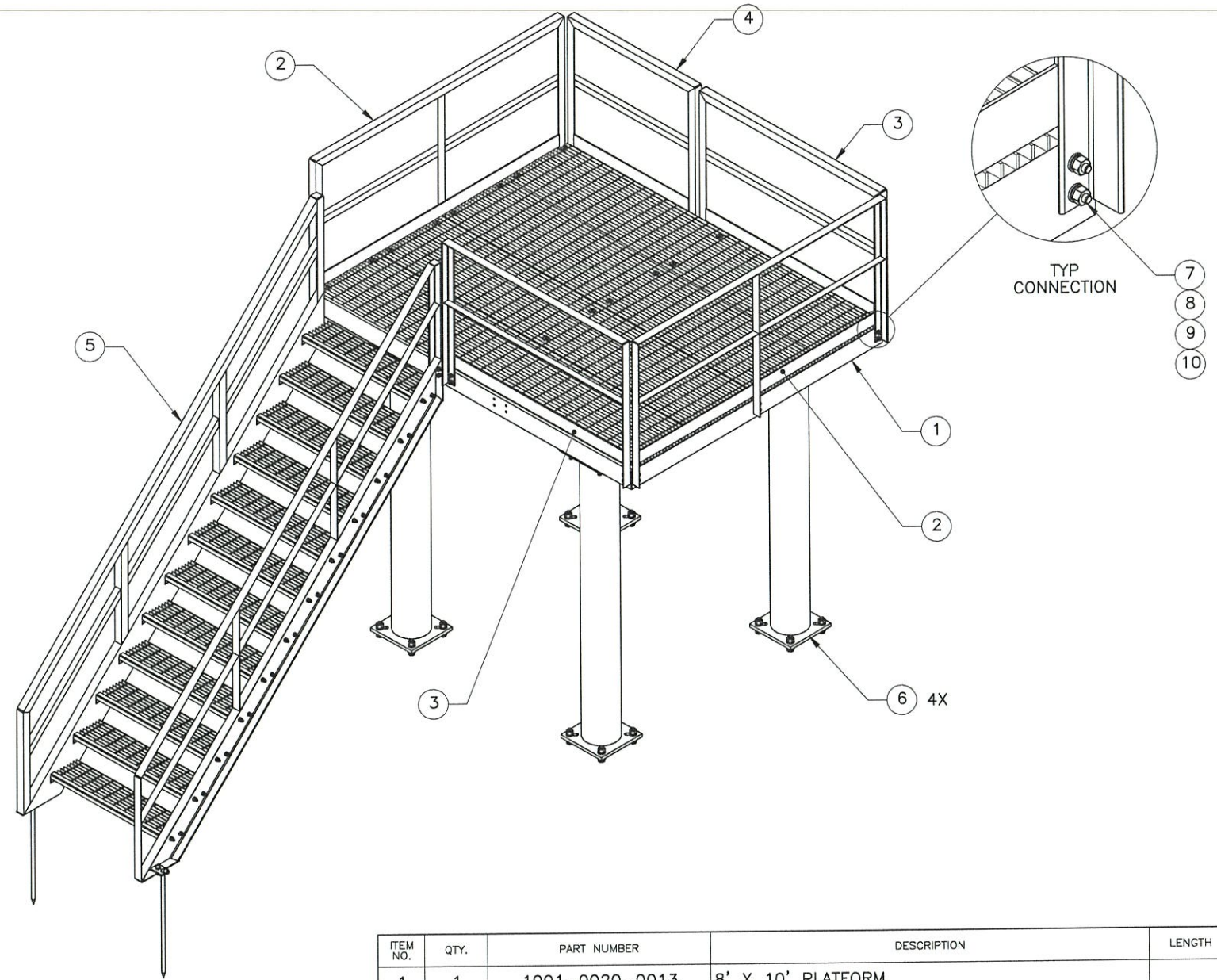
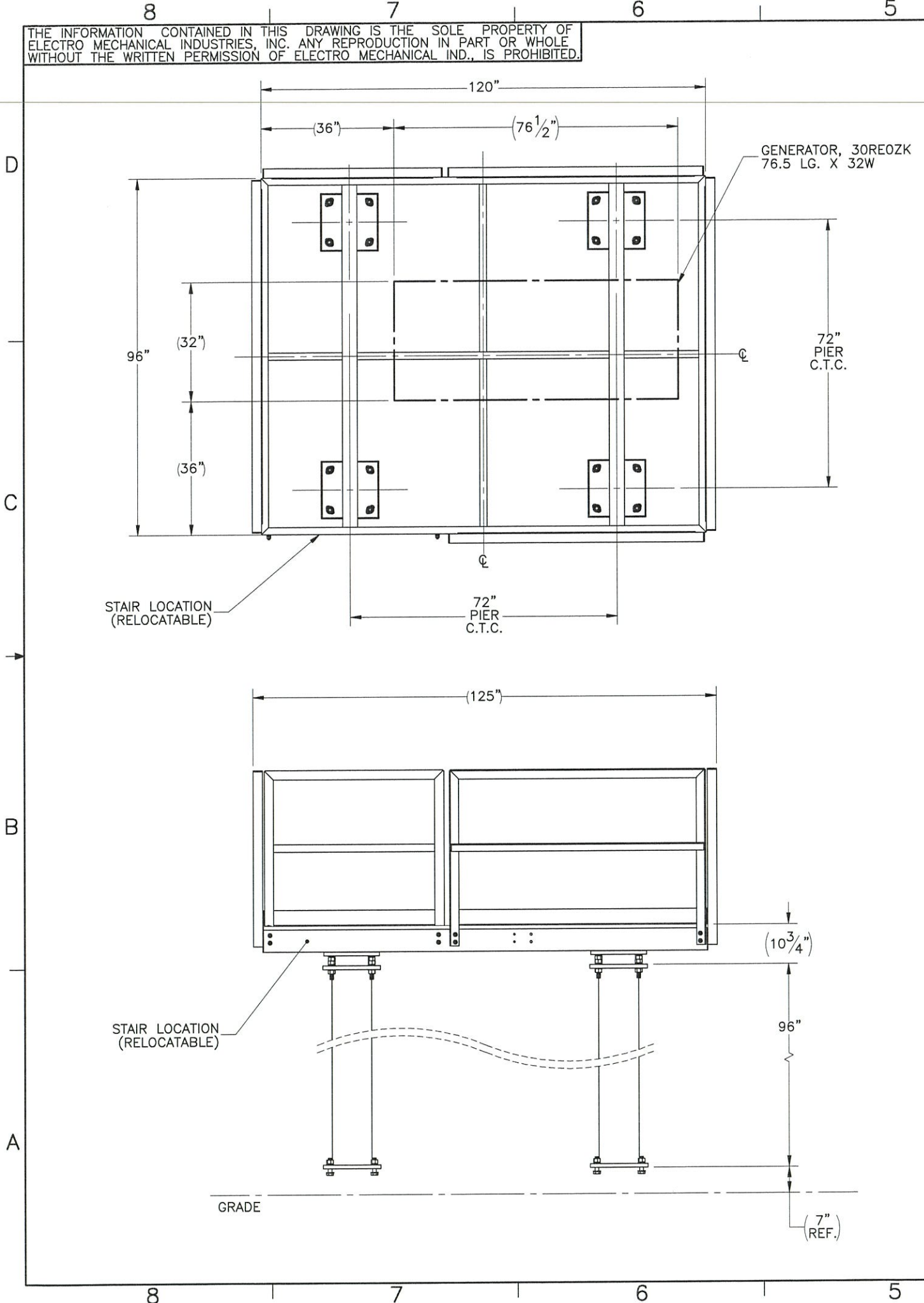


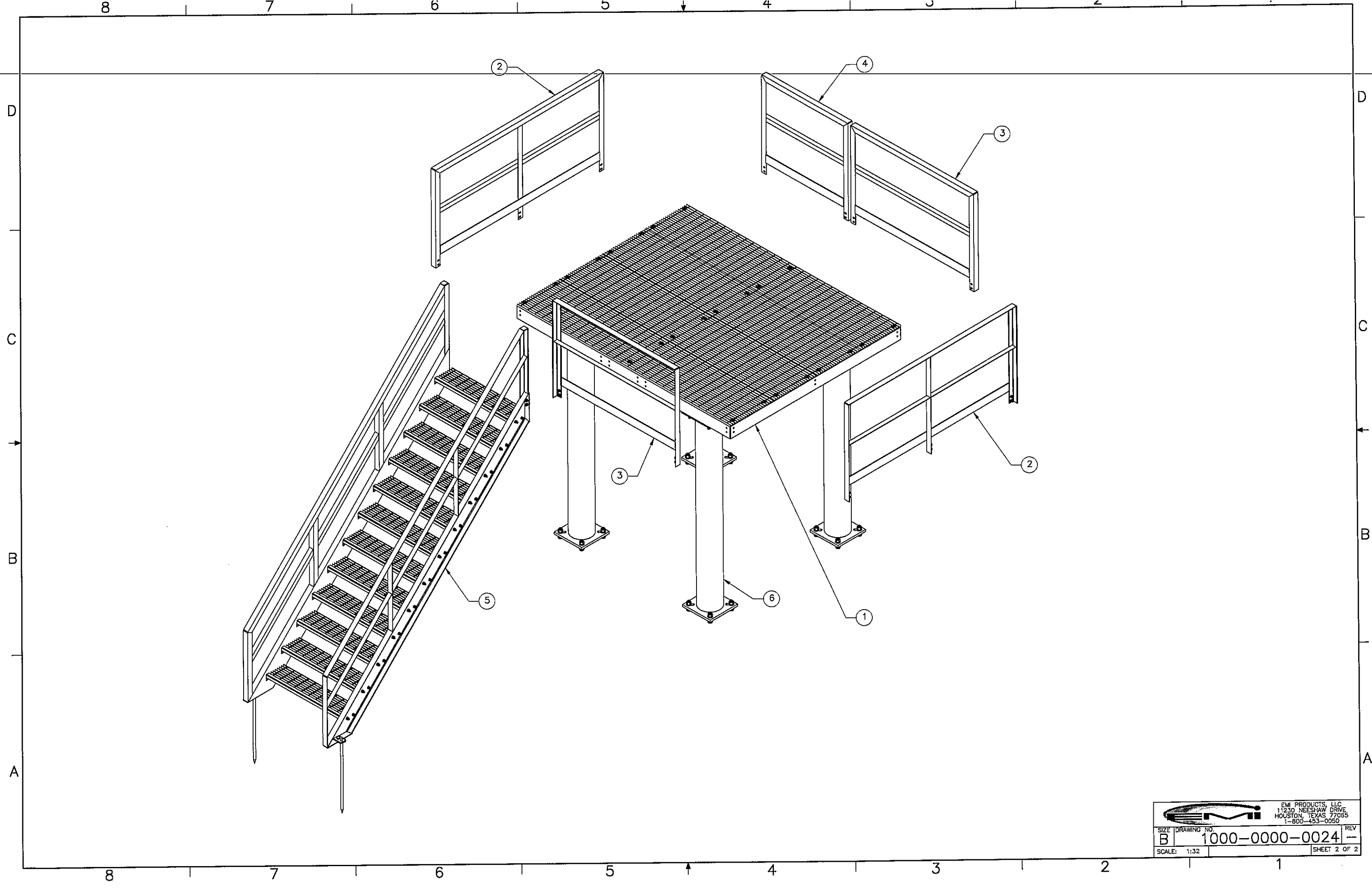
THE INFORMATION CONTAINED IN THIS DRAWING IS THE SOLE PROPERTY OF ELECTRO MECHANICAL INDUSTRIES, INC. ANY REPRODUCTION IN PART OR WHOLE WITHOUT THE WRITTEN PERMISSION OF ELECTRO MECHANICAL IND., IS PROHIBITED.




| ITEM NO. | QTY. | PART NUMBER       | DESCRIPTION  | LENGTH | WEIGHT |
|----------|------|-------------------|--|--------|--------|
| 1        | 1    | 1001-0020-0013    | 8' X 10' PLATFORM                                  |        | 1482.6 |
| 2        | 2    | 450-000-0601-0950 | HANDRAIL, 95"                                      |        | 127.9  |
| 3        | 2    | 450-000-0601-0690 | HANDRAIL, 69"                                      |        | 89.8   |
| 4        | 1    | 450-000-0601-0484 | HANDRAIL, 48-1/2"                                  |        | 71.7   |
| 5        | 1    | 450-000-0183      | 8' STAIR ASSEMBLY (42" WIDE)                       |        | 1054.4 |
| 6        | 4    | 400-000-2017      | 8' PIER EXTENSION ASSY. W/ HARDWARE                |        | 419.60 |
| 7        | 28   | 002-0BG-0010      | BOLT, HX HD, .500-13UNC X 1.50 LG, ASTM A325, GALV |        | 0.14   |
| 8        | 28   | 002-0NG-0010      | NUT, HX, .500-13UNC, GR DH, GALV                   |        | 0.06   |
| 9        | 28   | 002-0LW-G002      | WASHER, SPLIT LOCK, .500", GALV                    |        | 0.01   |
| 10       | 28   | 002-0FW-G002      | WASHER, FLAT, .500", F436, GALV                    |        | 0.02   |

|                        |                            |  |                   |          |   |
|------------------------|----------------------------|--|-------------------|----------|---|
| SURFACE FINISH         | UNLESS OTHERWISE SPECIFIED | UNLESS OTHERWISE SPECIFIED DIMENSIONS ARE IN INCHES          | APPROVALS         | DATE     | ELECTRO MECHANICAL INDUSTRIES, INC.<br>11230 NEESEHAW DRIVE<br>HOUSTON, TEXAS 77065<br>1-800-453-0050   |
| MATERIAL               | SEE PARTS LIST             | TOLERANCES   | DRAWN             | 11.4.15  |   |
| THIRD ANGLE PROJECTION |                            | .00 ± .06<br>.000 ± .01<br>FRACTIONS ± 1/16<br>ANGLES ± .25° | CHECKED           | 11.5.15  | <b>8' X 10' GENERATOR PLATFORM</b>  |
| NEXT ASSY              | USED ON                    | Holes:<br>DRILLED OR PUNCHED +1/32<br>BURNED ±1/32           | ENGINEER/DESIGNER | 11.5.15  |   |
| APPLICATIONS           |                            |  | PRODUCTION        | 11.19.15 | SIZE: B<br>DRAWING NO.: 1000-0000-0024<br>SCALE: 1:32<br>WEIGHT: 4729.34 lbs.<br>REV: -<br>SHEET 1 OF 2 |



|   |                |  |  |
|---|----------------|--|--|
|  |                | EMI PRODUCTS, LLC<br>11230 NEESHAW DRIVE<br>HOUSTON, TEXAS 77065<br>1-800-453-0050 |  |
| SIZE  | DRAWING NO.    | REV  |  |
| B   | 1000-0000-0024 | --   |  |
| SCALE: 1:32   | SHEET 2 OF 2   |  |  |