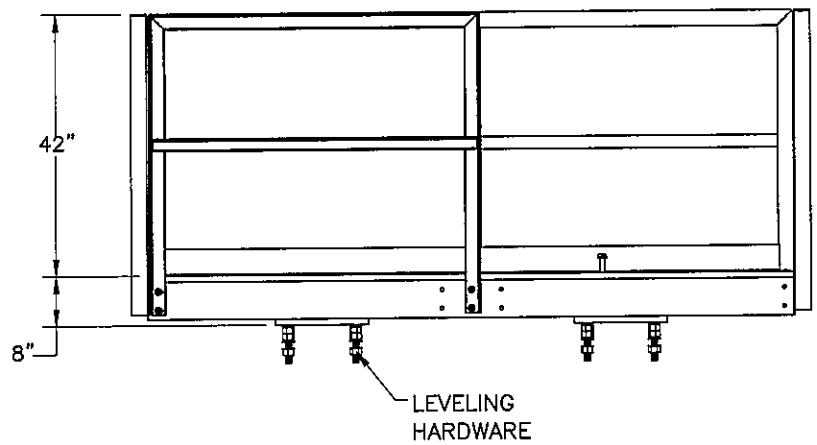
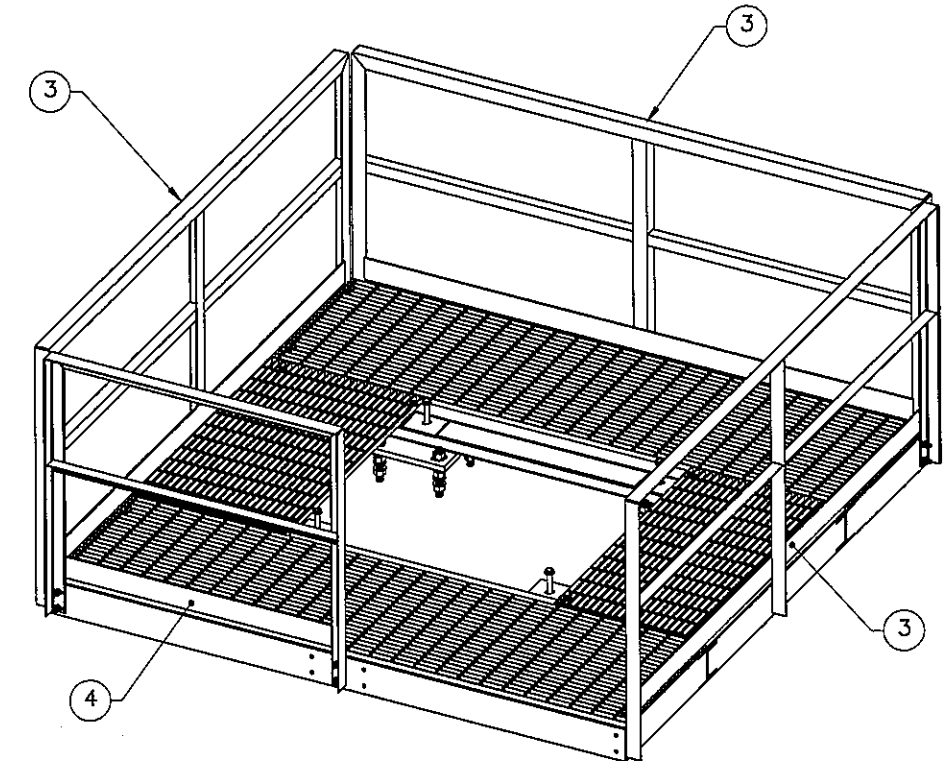
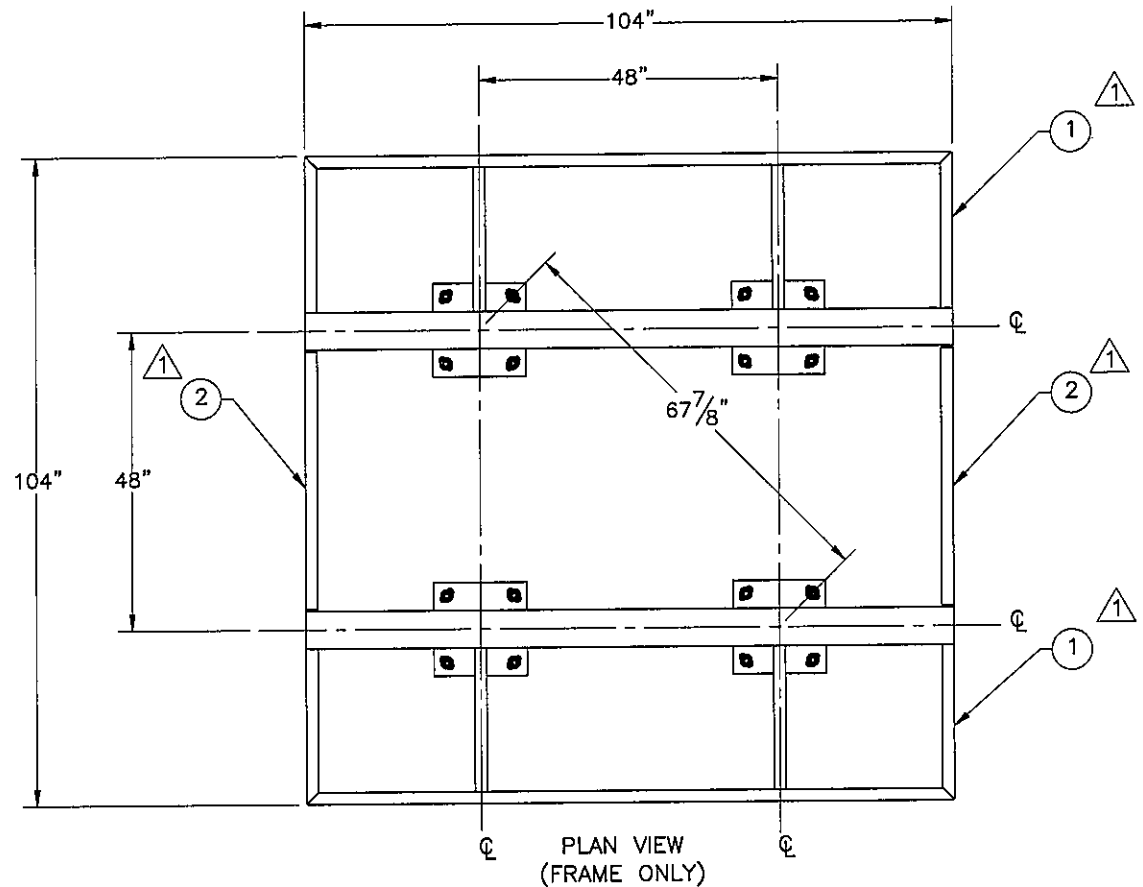


THE INFORMATION CONTAINED IN THIS DRAWING IS THE SOLE PROPERTY OF ELECTRO MECHANICAL INDUSTRIES, INC. ANY REPRODUCTION IN PART OR WHOLE WITHOUT THE WRITTEN PERMISSION OF ELECTRO MECHANICAL IND., IS PROHIBITED.

REVISIONS					
REV.	DCN #	DESCRIPTION	DATE	BY	APPROVED
1	DCN00411	UPDATED WELDMENTS	2.27.18	JGC	



ITEM NO.	QTY	PART NUMBER	DESCRIPTION	WEIGHT
1	2	W-000-769	SIDE WELDMENT	391.3
2	2	W-000-770	CHANNEL WELDMENT	32.9
3	3	1004-T001-1034	HANDRAIL, 103.5	136.33
4	1	1004-T001-0530	HANDRAIL, 53	76.32
5	2	P-001-925	GRATING PANEL, 27.5" X 103.5"	136.82
6	2	P-001-926	GRATING PANEL, 27.5" X 48"	63.43
7	16	000-MSG-0008	GRATING CLIP, 1", GALV.	0.21
8	4	450-000-0091	HUT CLAMP ASSEMBLY	4.9
9	16	002-OAT-H000	ROD, THREADED, 1.00"-8 X 9.00" LG, ASTM A193 B7, GALV	1.60
10	32	002-ONG-0000	NUT, HX, ANCO LOCK, 1.00"-8UNC, GR 2H, GALV	0.43
11	32	002-ONG-0008	NUT, HX, 1.00"-8UNC, GR 2H, GALV	0.42
12	32	002-OLW-G008	WASHER, SPLIT LOCK, 1.00", GALV	0.09
13	64	002-OFW-G009	WASHER, FLAT, 1.00", F436, GALV	0.08
14	30	002-OBG-0026	BOLT, HX HD, .500-13UNC X 1.75 LG, GR 5, GALV	0.14
15	30	002-ONG-0001	NUT, HEX, .500-13UNC, GR DH, GALV	0.06
16	30	002-OLW-G002	WASHER, SPLIT LOCK, .500", GALV	0.01
17	30	002-OFW-G002	WASHER, FLAT, .500", F436, GALV	0.02

SURFACE FINISH <input checked="" type="checkbox"/> UNLESS OTHERWISE SPECIFIED		UNLESS OTHERWISE SPECIFIED DIMENSIONS ARE IN INCHES		APPROVALS		DATE	ELECTRO MECHANICAL INDUSTRIES, INC. 1230 NEESHAW DRIVE HOUSTON, TEXAS 77065 1-800-453-0050
MATERIAL SEE PARTS LIST		TOLERANCES		DRAWN J. CRITELLI	1.29.18	TITLE:	
THIRD ANGLE PROJECTION		0 ±.06 .00 ±.01 .000 ±.005		CHECKED J. BUSHMAN	2.1.18	4 X 4 HUT PLATFORM	
NEXT ASSY USED ON		FRACTIONS ± 1/16 ANGLES ± .25°		ENGINEER/DESIGNER J. BUSHMAN	2.1.18	SIZE B	DRAWING NO. 1000-0000-0038
APPLICATIONS		HOLES: DRILLED OR PUNCHED ± 1/32 BURNED ± 1/32		PRODUCTION J. SUNDERLAND	2.1.18	SCALE: 1:30	WEIGHT: 1825.1 lbs.
						REV 1	SHEET 1 OF 4

8

7

6

5

4

3

2

1

D

D

C

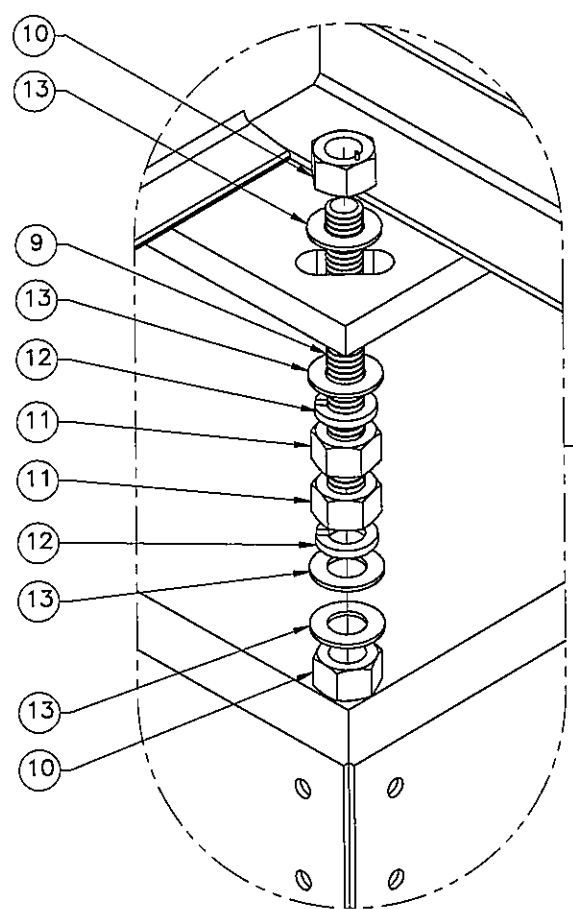
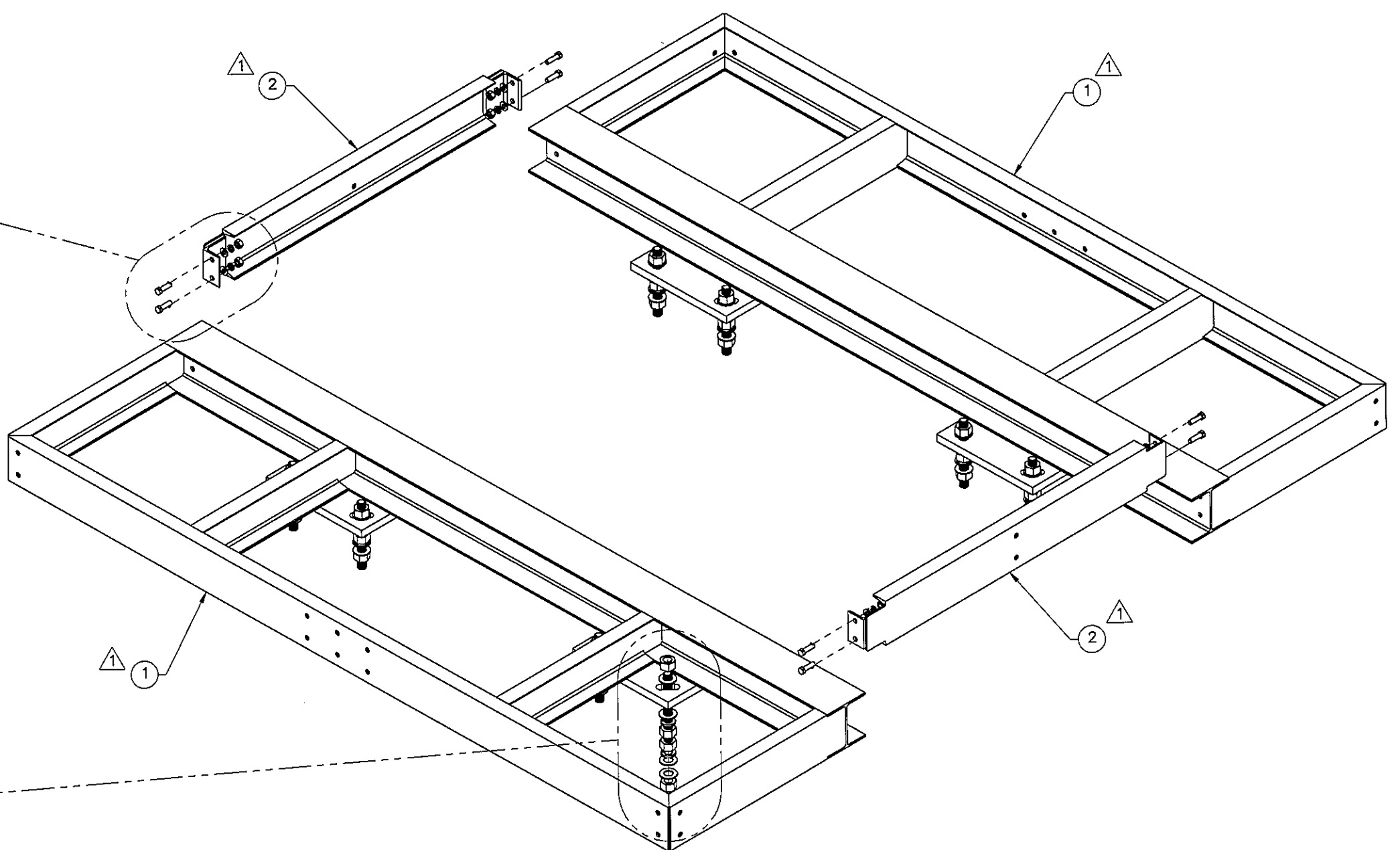
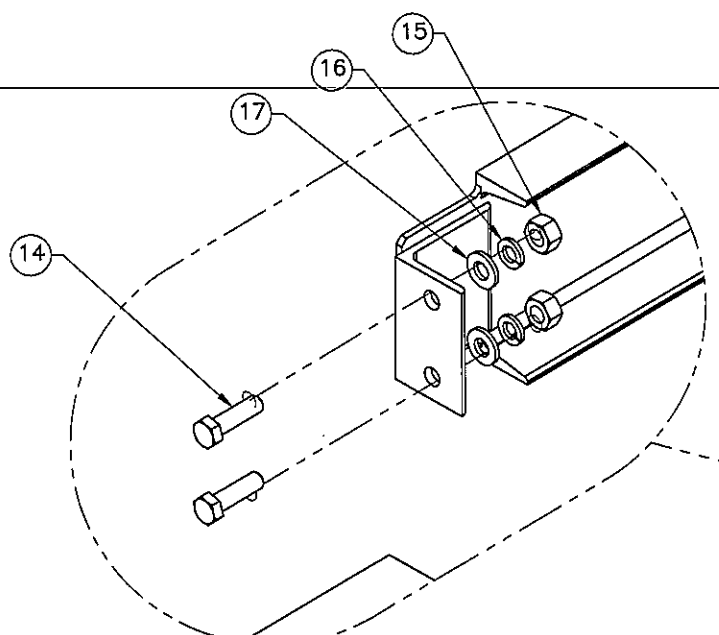
C

B


B

A

A



TYP. LEVELING  
CONNECTION TO PIER  
OR PIER EXTENSION  
(4X PER PIER)

		ELECTRO MECHANICAL INDUSTRIES, INC. 11230 NEEDHAM DRIVE HOUSTON, TEXAS 77065 1-800-453-0050	
SIZE	DRAWING NO.	REV	
B	1000-0000-0038	1	
SCALE:	1:14	SHEET 2 OF 4	

8

7

6

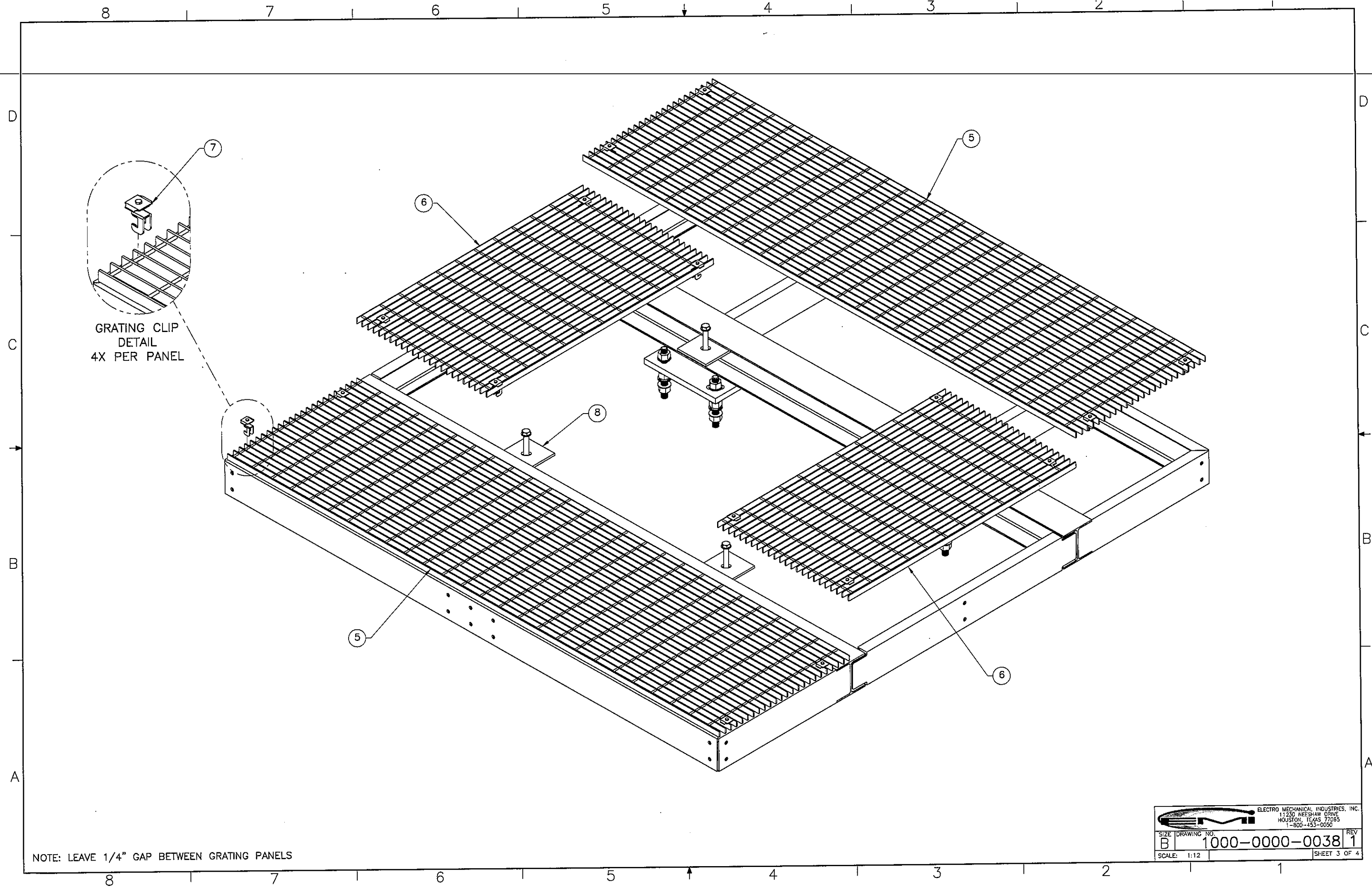
5

4

3


2

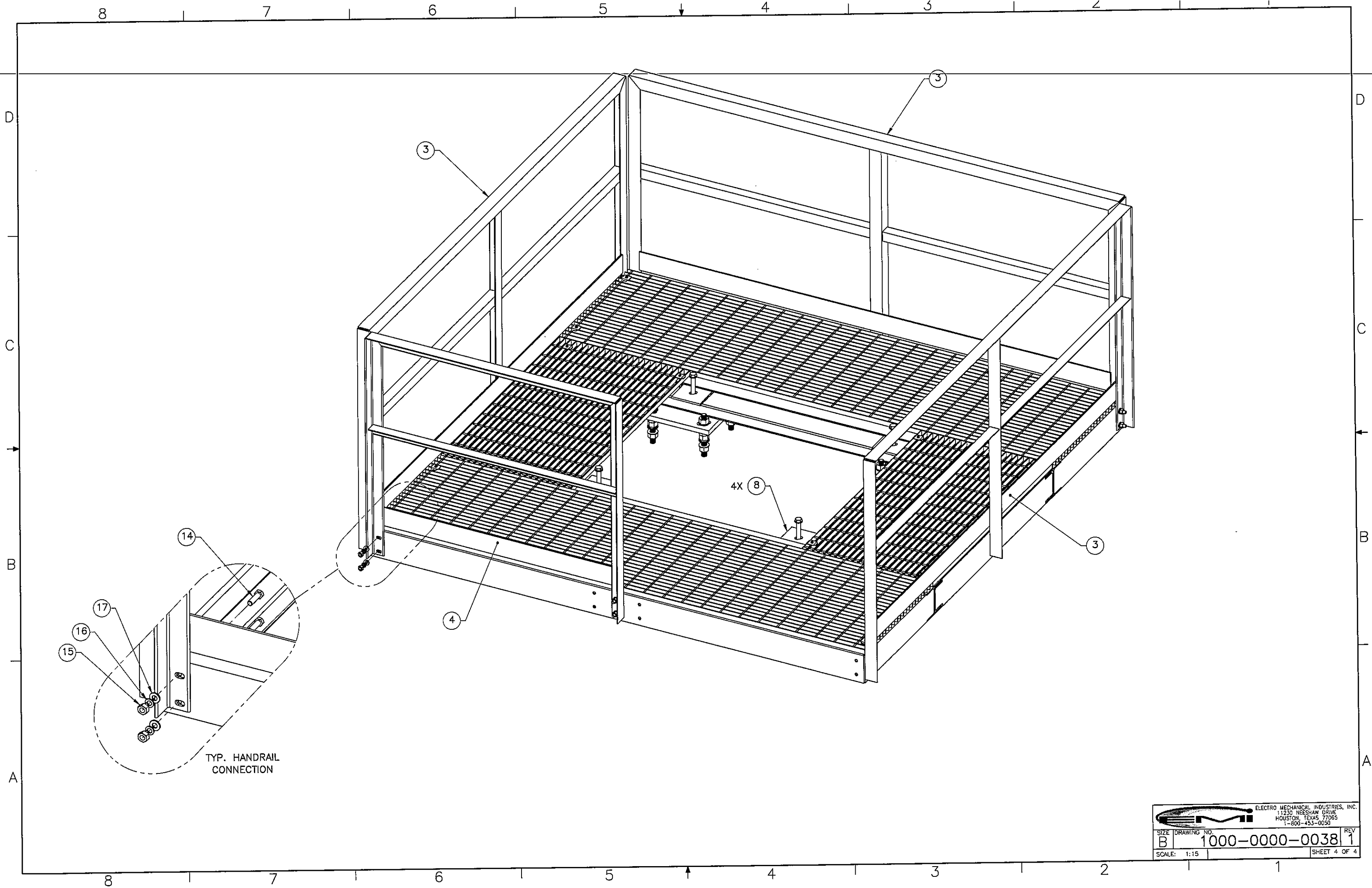
1




7  
 GRATING CLIP  
 DETAIL  
 4X PER PANEL

NOTE: LEAVE 1/4" GAP BETWEEN GRATING PANELS

 ELECTRO MECHANICAL INDUSTRIES, INC. 11230 NEESEHAW DRIVE HOUSTON, TEXAS 77085 1-800-453-0050		
SIZE	DRAWING NO.	REV
B	1000-0000-0038	1
SCALE: 1:12	SHEET 3 OF 4	



 ELECTRO MECHANICAL INDUSTRIES, INC. 11230 NEESEAW DRIVE HOUSTON, TEXAS 77065 1-800-453-0050		
SIZE	DRAWING NO.	REV.
B	1000-0000-0038	1
SCALE: 1:15	SHEET 4 OF 4	