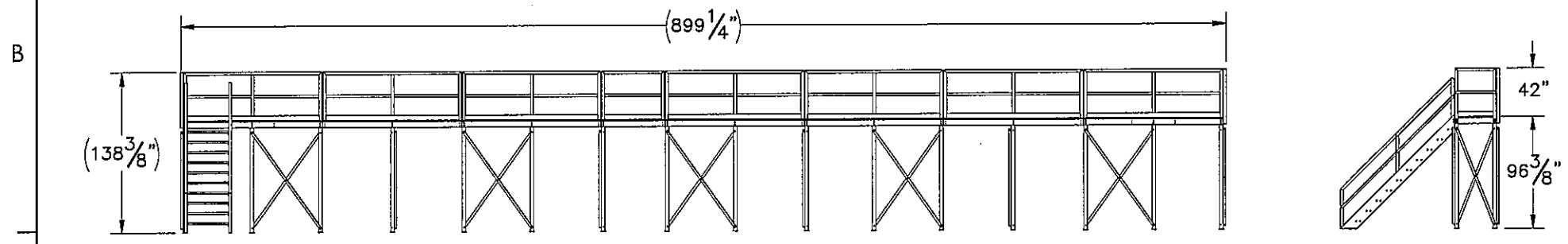
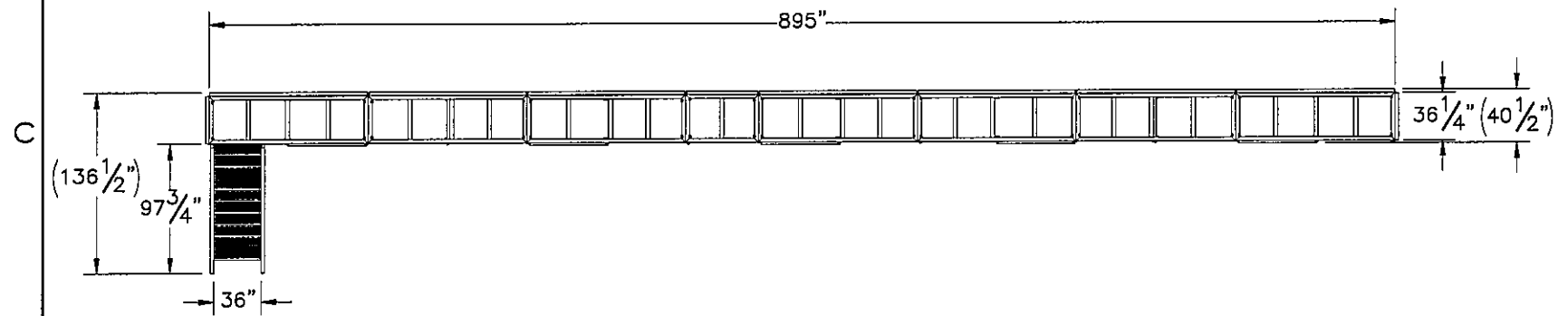
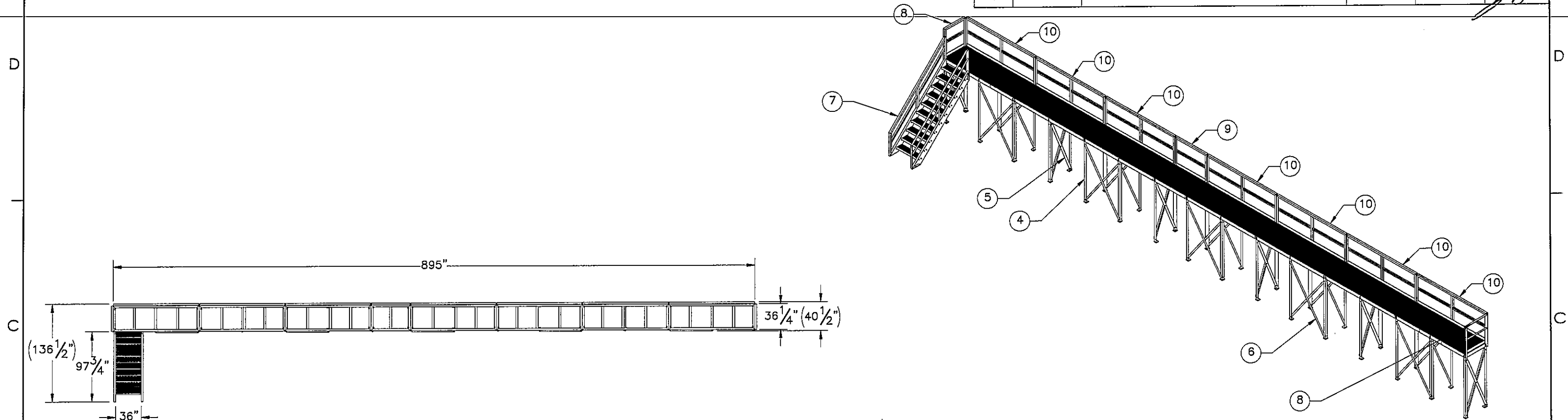


THE INFORMATION CONTAINED IN THIS DRAWING IS THE SOLE PROPERTY OF ELECTRO MECHANICAL INDUSTRIES, INC. ANY REPRODUCTION IN PART OR WHOLE WITHOUT THE WRITTEN PERMISSION OF ELECTRO MECHANICAL IND., IS PROHIBITED.

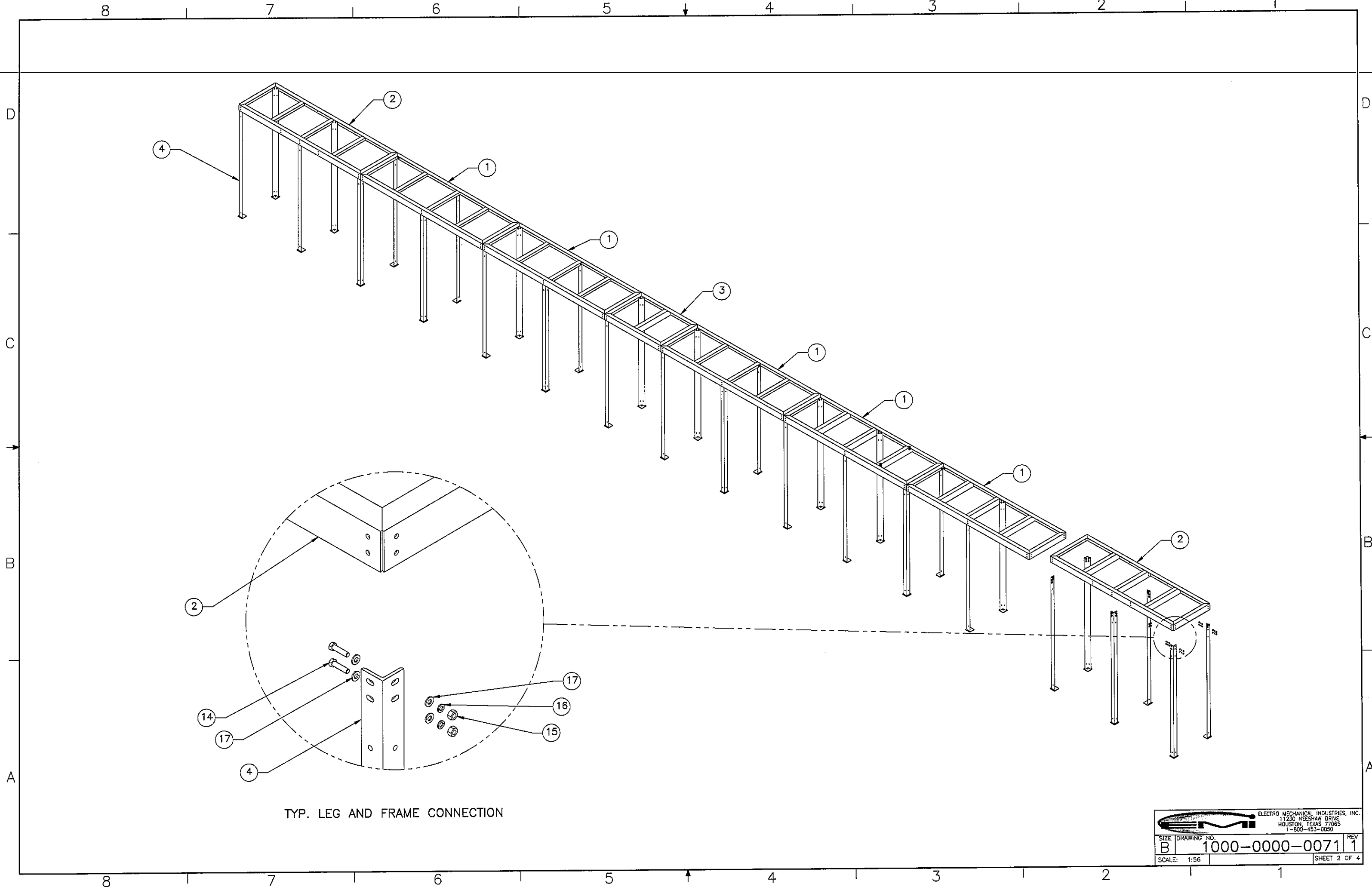
REVISIONS					
REV.	DCN #	DESCRIPTION	DATE	BY	APPROVED
1	DCND0374	UPDATED DRAWING TITLE TO READ CORRECT OVERALL	12.15.2017	RLWJr	<i>[Signature]</i>




ITEM NO.	QTY REQD	PART NUMBER	DESCRIPTION	LENGTH	WEIGHT
1	5	W-000-435	CATWALK FRAME WELDMENT 36.25" X 120"	120"	223.96
2	2	W-000-622	CATWALK FRAME WELDMENT 36" X 120"	120"	223.82
3	1	W-000-632	CATWALK FRAME WELDMENT 36" X 55"	55"	115.52
4	32	W-000-623	CATWALK LEG WELDMENT, 96"		57.54
5	6	A-000-135	X BRACE ASSEMBLY		48.8
6	10	A-000-136	X BRACE ASSEMBLY		1.9
7	1	450-000-0172	7' STAIR ASSEMBLY (36" WIDE)		825.3
8	2	450-000-0601-0354	HANDRAIL, 35-1/2"		60.2
9	1	450-000-0601-0540	HANDRAIL, 54"		76.6
10	7	450-000-0601-1190	HANDRAIL, 119"	119"	149.2
11	1	450-000-0703-0540	GRATING PANEL, 36" X 54"		94.29
12	7	450-000-0703-1196	GRATING PANEL, 36" X 119-3/4"		208.67
13	32	000-MSG-0008	GRATING CLIP, 1", GALV.		0.21
14	140	002-OBG-0049	BOLT, HX HD, .500-13UNC, 2.00 LG, GR 5, GALV		0.15
15	140	002-ONG-0001	NUT, HEX, .500-13UNC, GR DH, GALV		0.06
16	140	002-OLW-G002	WASHER, SPLIT LOCK, .500", GALV		0.01
17	280	002-OFW-G002	WASHER, FLAT, .500", F436, GALV		0.02

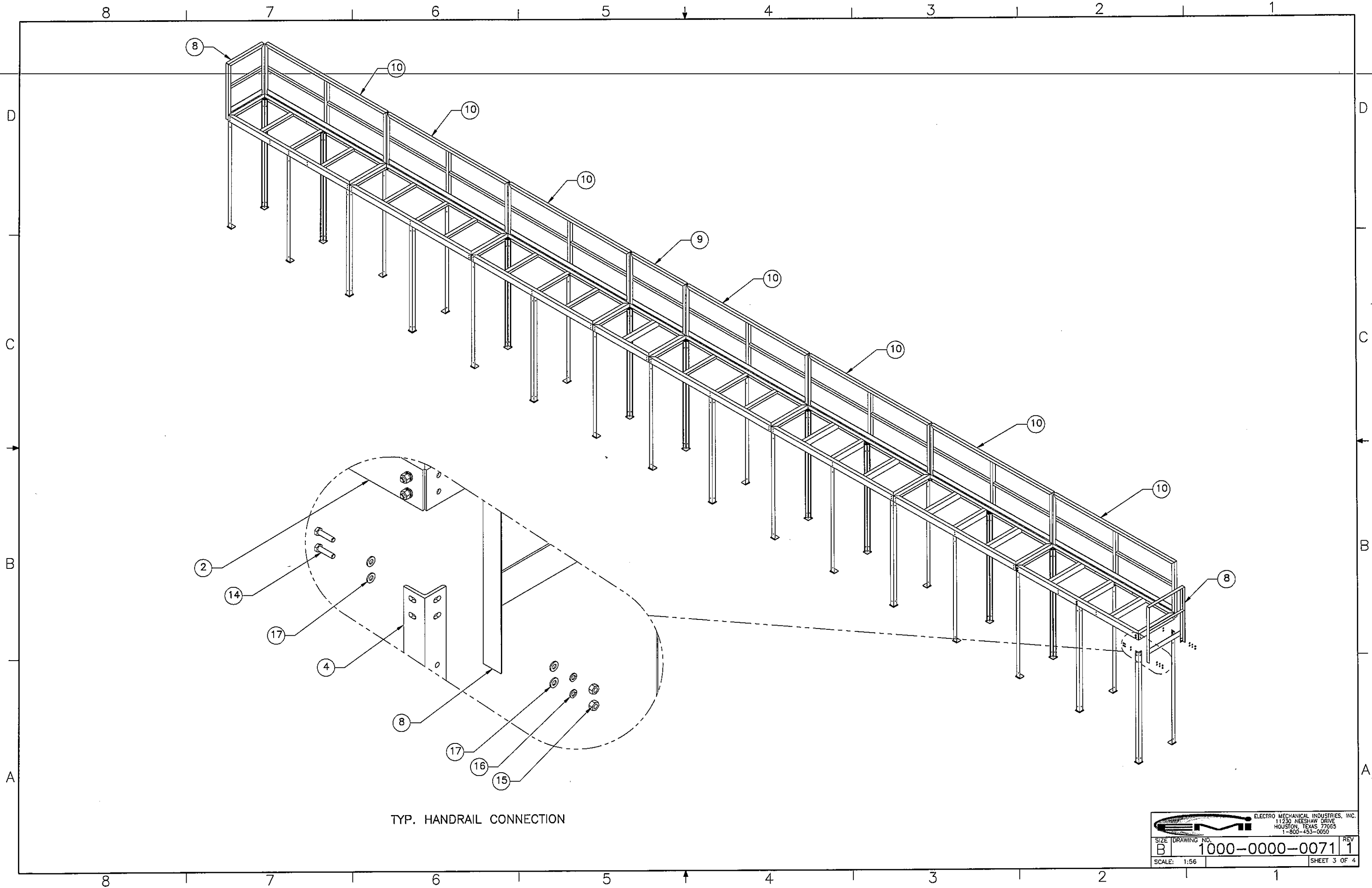
SURFACE FINISH <input checked="" type="checkbox"/> UNLESS OTHERWISE SPECIFIED		UNLESS OTHERWISE SPECIFIED DIMENSIONS ARE IN INCHES		APPROVALS		DATE	
MATERIAL SEE PARTS LIST		TOLERANCES		DRAWN RLWJr		08.16.2017	
THIRD ANGLE PROJECTION		0 ±.06 .000 ±.01 ±.005		CHECKED J. BUSHMAN		08.16.2017	
NEXT ASSY		FRACTIONS ± 1/16		ENGINEER/DESIGNER J. BUSHMAN		08.16.2017	
USED ON		ANGLES ± .25°		PRODUCTION J. BOWLDS		08.16.2017	
APPLICATIONS		HOLES: DRILLED OR PUNCHED ± 1/32		TITLE: 75' ELEVATED WALKWAY		SIZE B	
		BURNED ± 1/32		DRAWING NO. 1000-0000-0071		REV 1	
				SCALE: 1:128		WEIGHT: 7502.9 lbs.	
						SHEET 1 OF 4	

**EMI** ELECTRO MECHANICAL INDUSTRIES, INC.  
11230 NEESEHAW DRIVE  
HOUSTON, TEXAS 77065  
1-800-453-0050

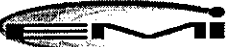


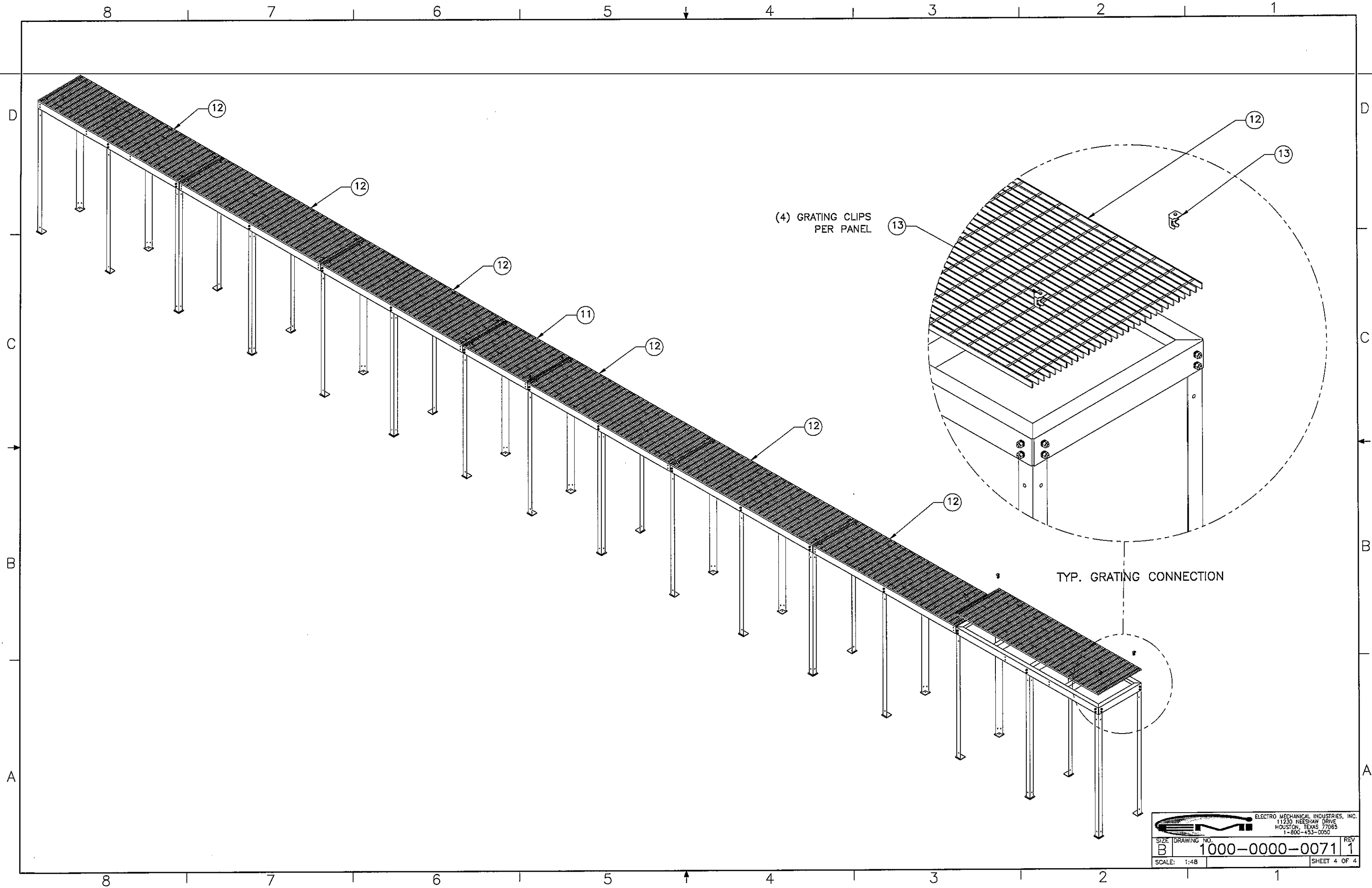
TYP. LEG AND FRAME CONNECTION


 ELECTRO MECHANICAL INDUSTRIES, INC. 11230 NEESHAW DRIVE HOUSTON, TEXAS 77065 1-800-453-0050		REV
		1
SIZE	DRAWING NO.	REV
B	1000-0000-0071	1
SCALE:	1:56	SHEET 2 OF 4



TYP. HANDRAIL CONNECTION

 ELECTRO MECHANICAL INDUSTRIES, INC. 11230 NEESEAW DRIVE HOUSTON, TEXAS 77065 1-800-453-0050		
SIZE	DRAWING NO.	REV
B	1000-0000-0071	1
SCALE: 1:56	SHEET 3 OF 4	



 ELECTRO MECHANICAL INDUSTRIES, INC. 11230 NEESEHAW DRIVE HOUSTON, TEXAS 77065 1-800-453-0050	
SIZE	DRAWING NO.
B	1000-0000-0071
SCALE: 1:48	REV 1
SHEET 4 OF 4	