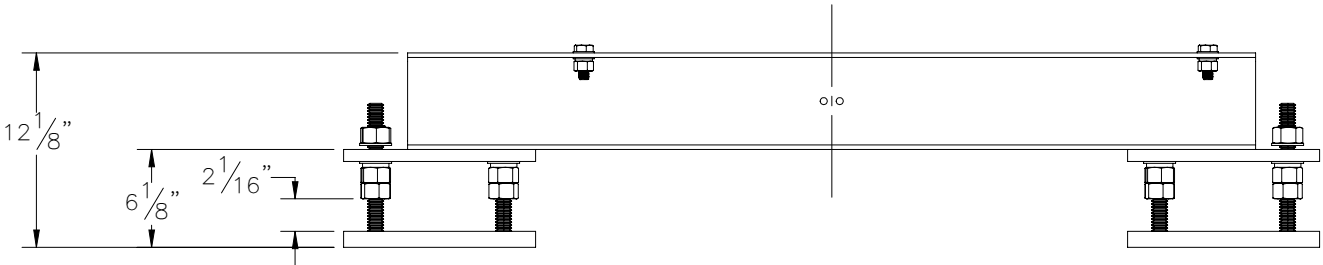
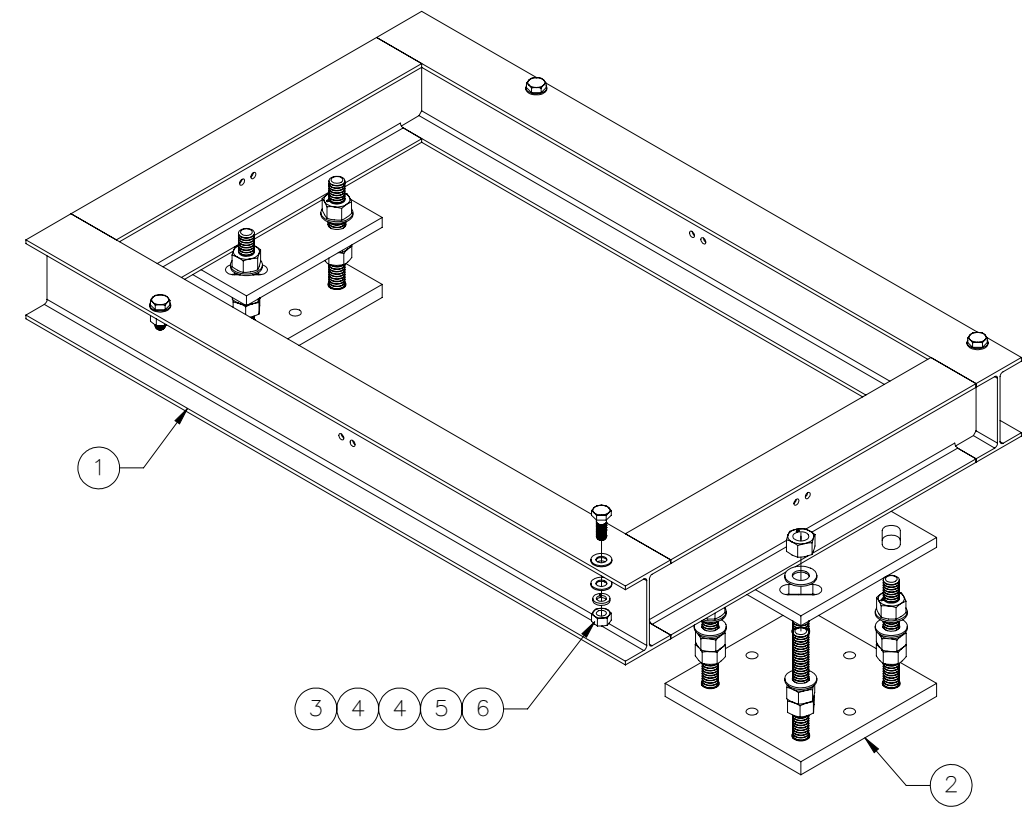
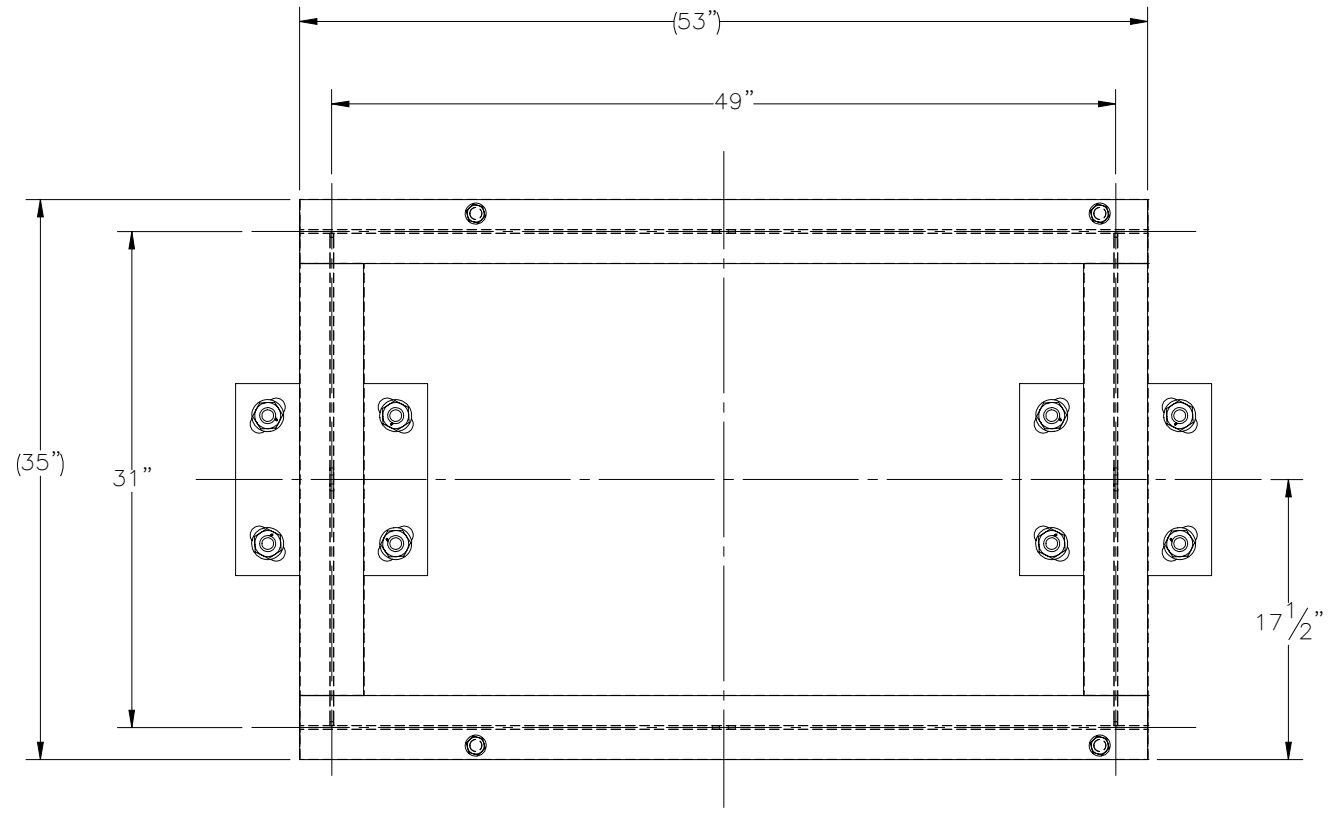



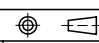
THE INFORMATION CONTAINED IN THIS DRAWING IS THE SOLE PROPERTY OF ELECTRO MECHANICAL INDUSTRIES, INC. ANY REPRODUCTION IN PART OR WHOLE WITHOUT THE WRITTEN PERMISSION OF ELECTRO MECHANICAL IND., IS PROHIBITED.

REVISIONS					
REV.	DCN #	DESCRIPTION	DATE	BY	APPROVED
5	01205	RODENT GUARD P-006-606 ADDED.	01/05/2023	JTR	JPB



ITEM NO.	QTY REQD	PART NUMBER	DESCRIPTION	WEIGHT
1	1	W-000-460	GENERATOR FRAME WELDMENT	220
2	2	1008-0020-0001	ANCHOR BASE PLATE ASSEMBLY	52
3	4	002-0BG-0033	BOLT, HX HD, .625-11UNC X 1.75" LG, ASTM A325, GALV	0.03
4	8	002-0FW-G004	WASHER, FLAT, .625", ASTM F436, GALV	0.03
5	4	002-0LW-G004	WASHER, SPLIT LOCK, .625 INCH, GALV	0.03
6	4	002-0NG-0004	NUT, HX, 0.625-11UNC, GR 2H, GALV	0.12
7	1	P-006-606	RODENT GUARD	2.7

NOTES:  
 1 OPTIONAL PLATE PROVIDED IF REQUIRED FOR GENERATOR.

SURFACE FINISH <input checked="" type="checkbox"/> UNLESS OTHERWISE SPECIFIED		UNLESS OTHERWISE SPECIFIED DIMENSIONS ARE IN INCHES		APPROVALS		DATE		 ELECTRO MECHANICAL INDUSTRIES, INC. 11230 NEESESHAW DRIVE HOUSTON, TEXAS 77065 1-800-453-0050	
MATERIAL SEE PARTS LIST		TOLERANCES .0 ± .06 .00 ± .015 .000 ± .005		DRAWN P. GUTIERREZ		5/2/2018			
THIRD ANGLE PROJECTION 		FRACTIONS ± 1/16		CHECKER J. BREEN		9/20/2018		TITLE: <h3>GENERATOR PLATFORM</h3>	
NEXT ASSY		ANGLES ± .25°		ENGINEER J. BREEN		9/20/2018			
USED ON		HOLES: DRILLED OR PUNCHED ± 1/32 BURNED ± 1/32		PRODUCTION JKS		9/20/2018		SIZE B DRAWING NO. 1000-0000-0115 REV 5	
APPLICATIONS				SCALE: 1:12		WEIGHT: 327 lbs.		SHEET 1 OF 1	