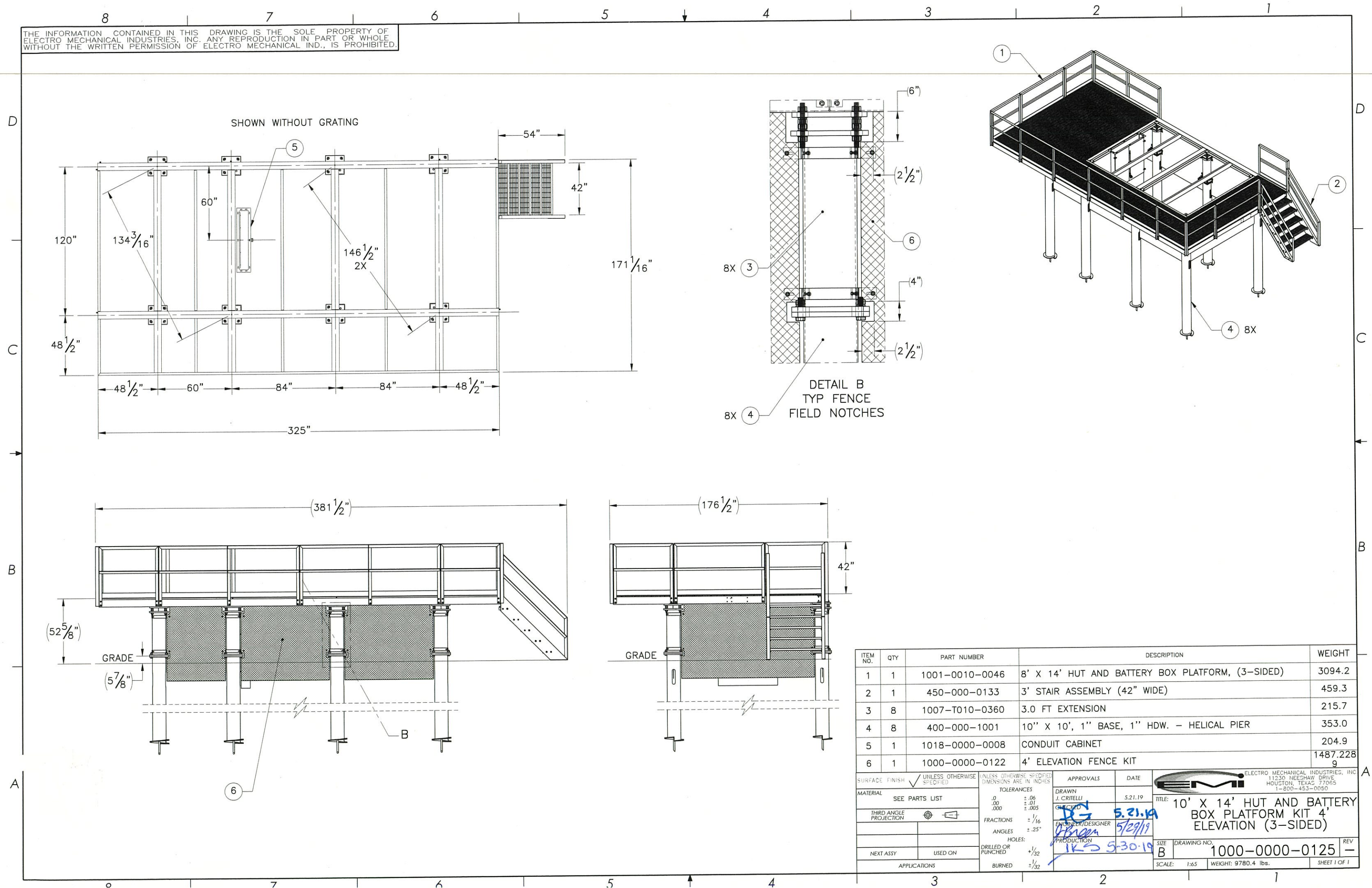
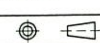


THE INFORMATION CONTAINED IN THIS DRAWING IS THE SOLE PROPERTY OF ELECTRO MECHANICAL INDUSTRIES, INC. ANY REPRODUCTION IN PART OR WHOLE WITHOUT THE WRITTEN PERMISSION OF ELECTRO MECHANICAL IND., IS PROHIBITED.



ITEM NO.	QTY	PART NUMBER	DESCRIPTION	WEIGHT
1	1	1001-0010-0046	8' X 14' HUT AND BATTERY BOX PLATFORM, (3-SIDED)	3094.2
2	1	450-000-0133	3' STAIR ASSEMBLY (42" WIDE)	459.3
3	8	1007-T010-0360	3.0 FT EXTENSION	215.7
4	8	400-000-1001	10" X 10', 1" BASE, 1" HDW. - HELICAL PIER	353.0
5	1	1018-0000-0008	CONDUIT CABINET	204.9
6	1	1000-0000-0122	4' ELEVATION FENCE KIT	1487.228 g

SURFACE FINISH <input checked="" type="checkbox"/> UNLESS OTHERWISE SPECIFIED		UNLESS OTHERWISE SPECIFIED DIMENSIONS ARE IN INCHES		APPROVALS	DATE	 ELECTRO MECHANICAL INDUSTRIES, INC. 11230 NEEGHAW DRIVE HOUSTON, TEXAS 77065 1-800-453-0050
MATERIAL	SEE PARTS LIST	TOLERANCES		DRAWN	5.21.19	
THIRD ANGLE PROJECTION		.00 ± .06 .000 ± .005 FRACTIONS ± 1/16 ANGLES ± .25°		5.21.19 5/29/19		SIZE: B DRAWING NO.: 1000-0000-0125 SCALE: 1:65 WEIGHT: 9780.4 lbs.
NEXT ASSY	USED ON	DRILLED OR PUNCHED HOLES: +1/32 BURNED: ± 1/32		REV: - SHEET 1 OF 1		