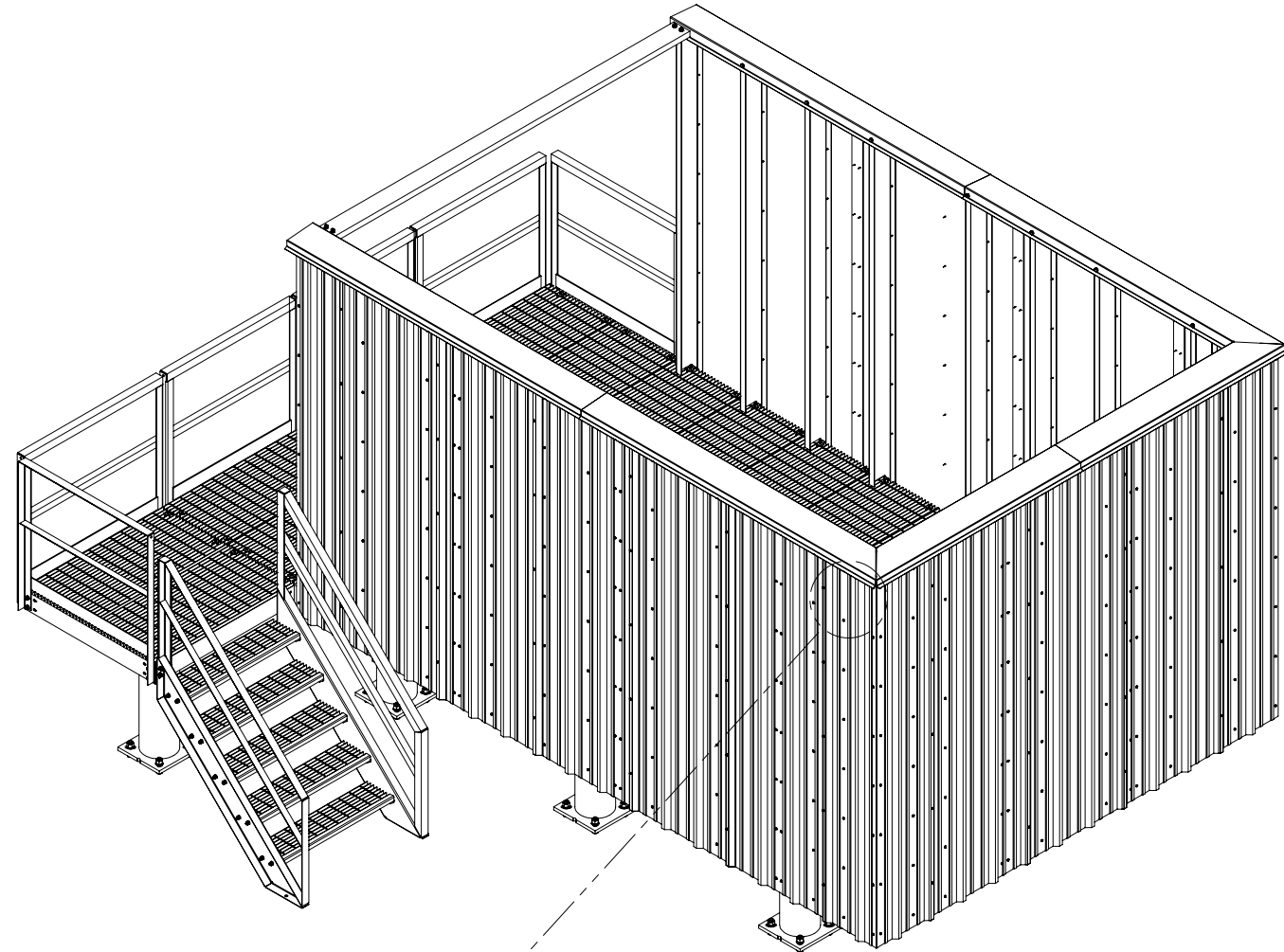
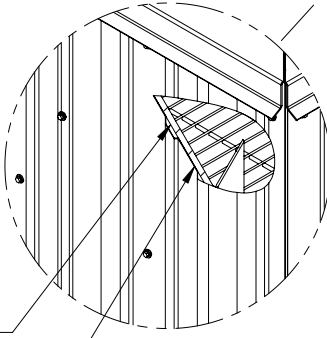


THE INFORMATION CONTAINED IN THIS DRAWING IS THE SOLE PROPERTY OF ELECTRO MECHANICAL INDUSTRIES, INC. ANY REPRODUCTION IN PART OR WHOLE WITHOUT THE WRITTEN PERMISSION OF ELECTRO MECHANICAL IND., IS PROHIBITED.




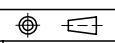
BALLISTIC PANEL  
LVL 2 UL 752, 5/16" THK

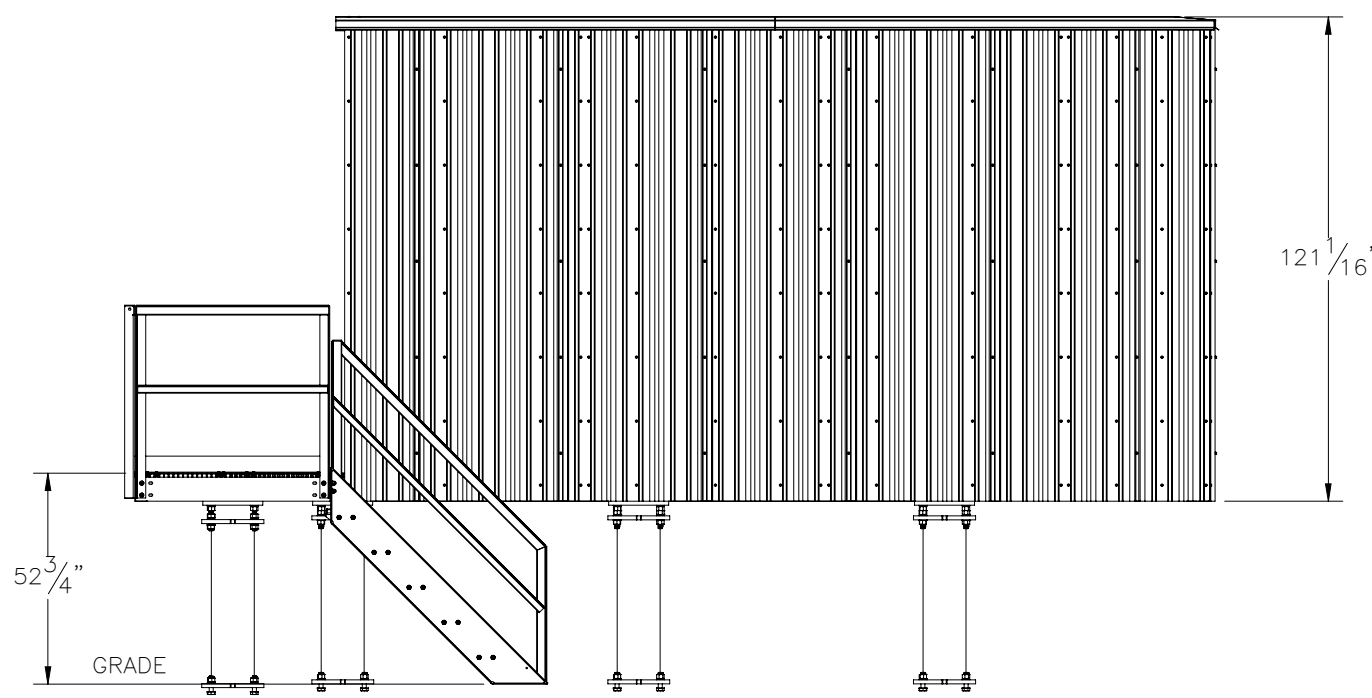
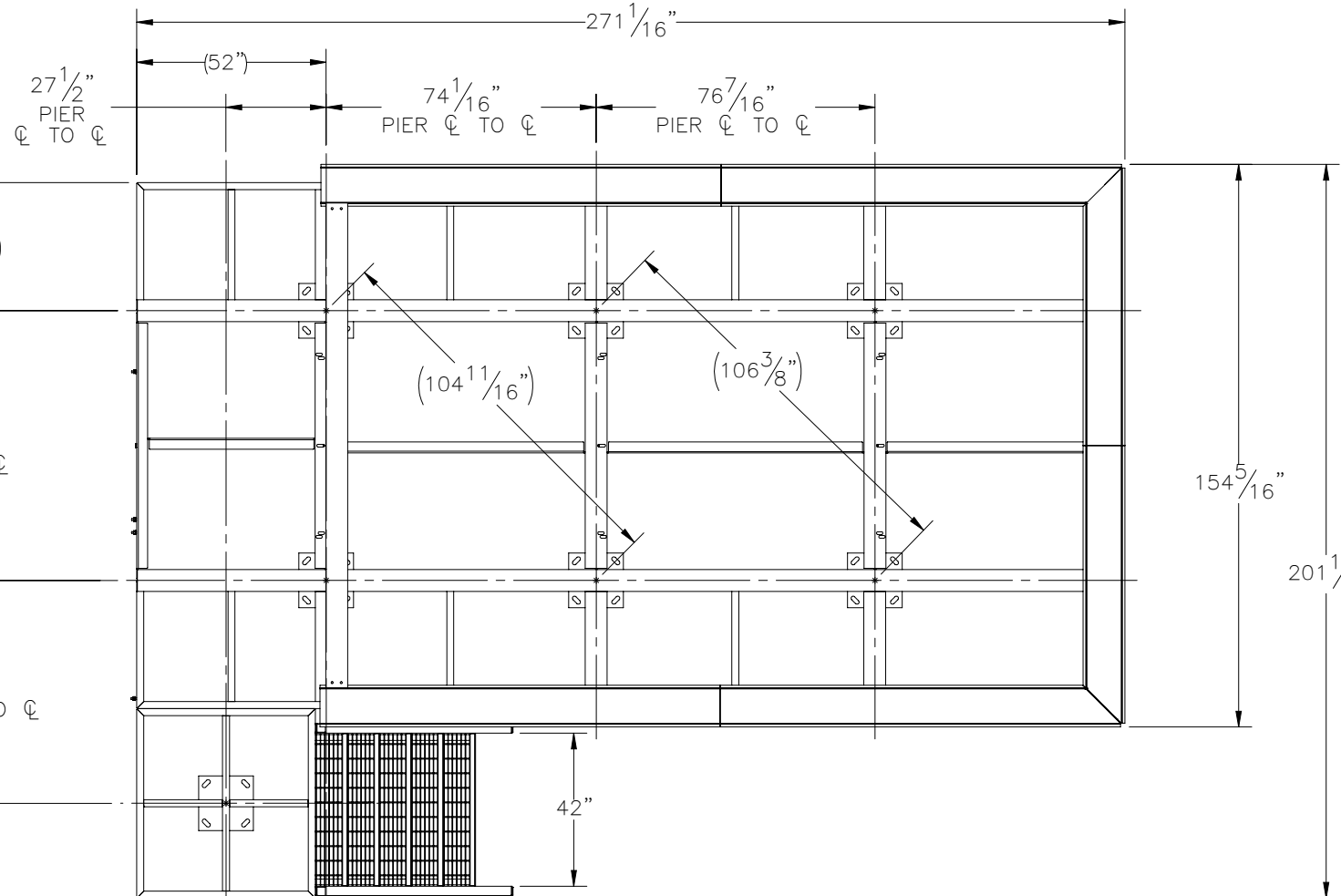
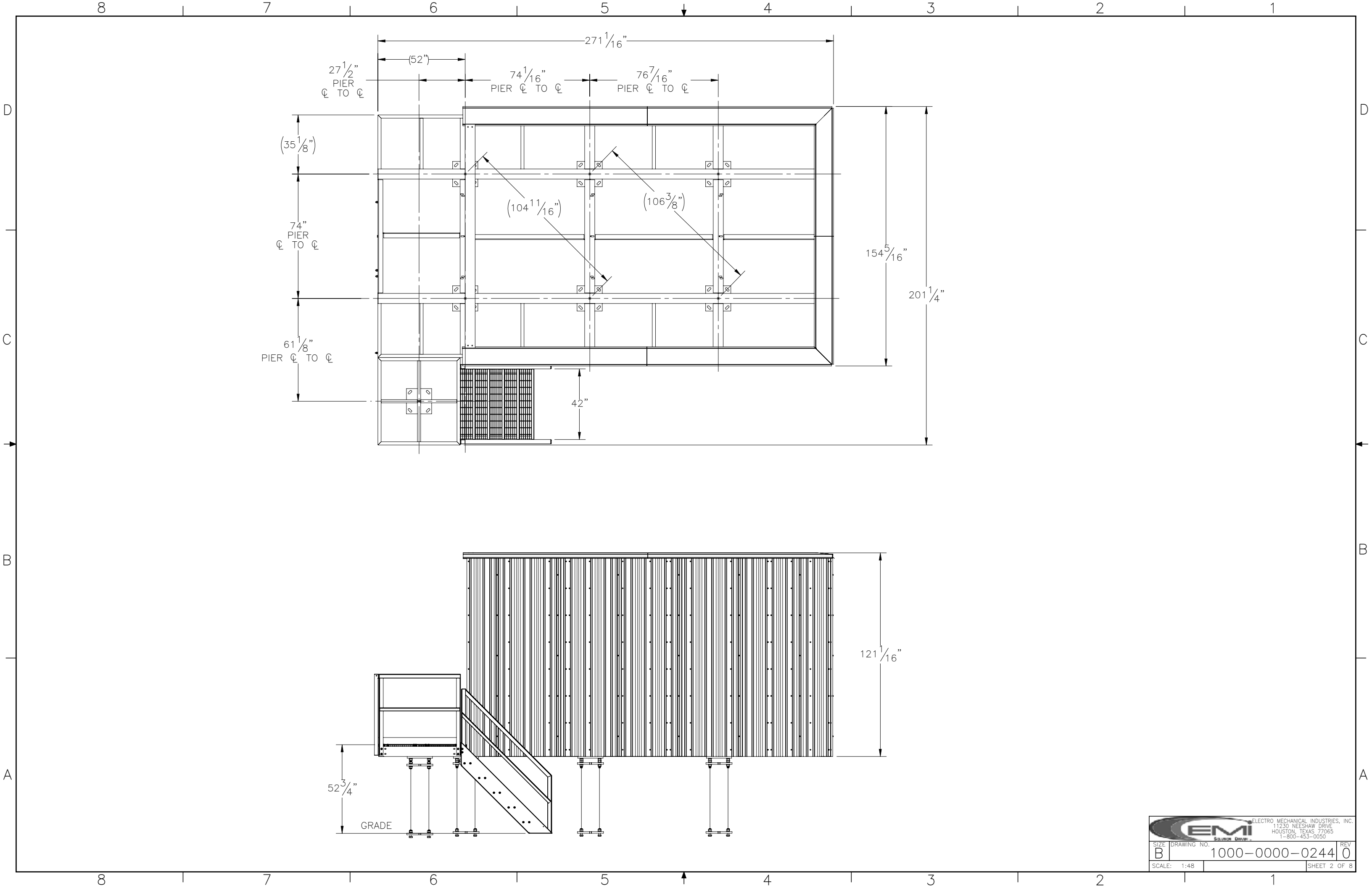
SUPER SPAN-X  
(GALV ALUMINUM 24 GA)




DETAIL A

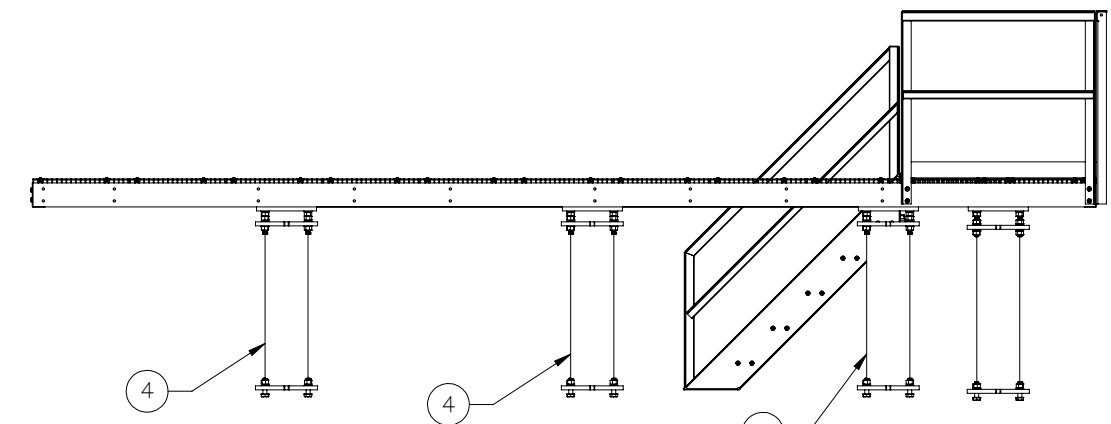
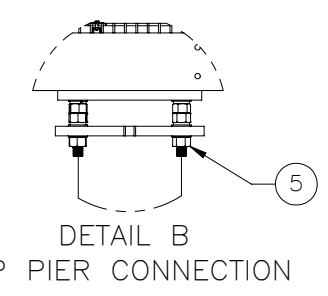
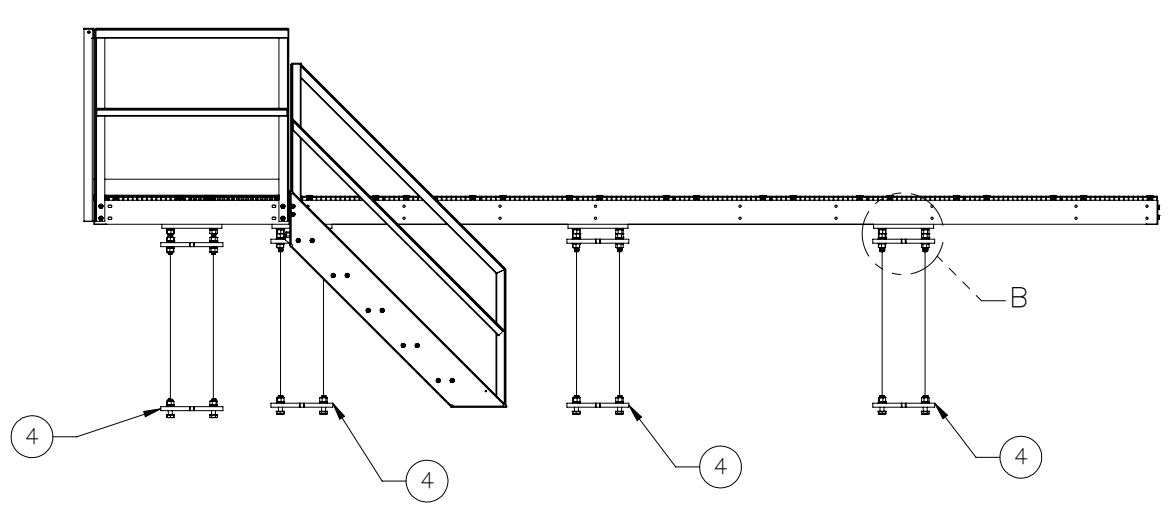
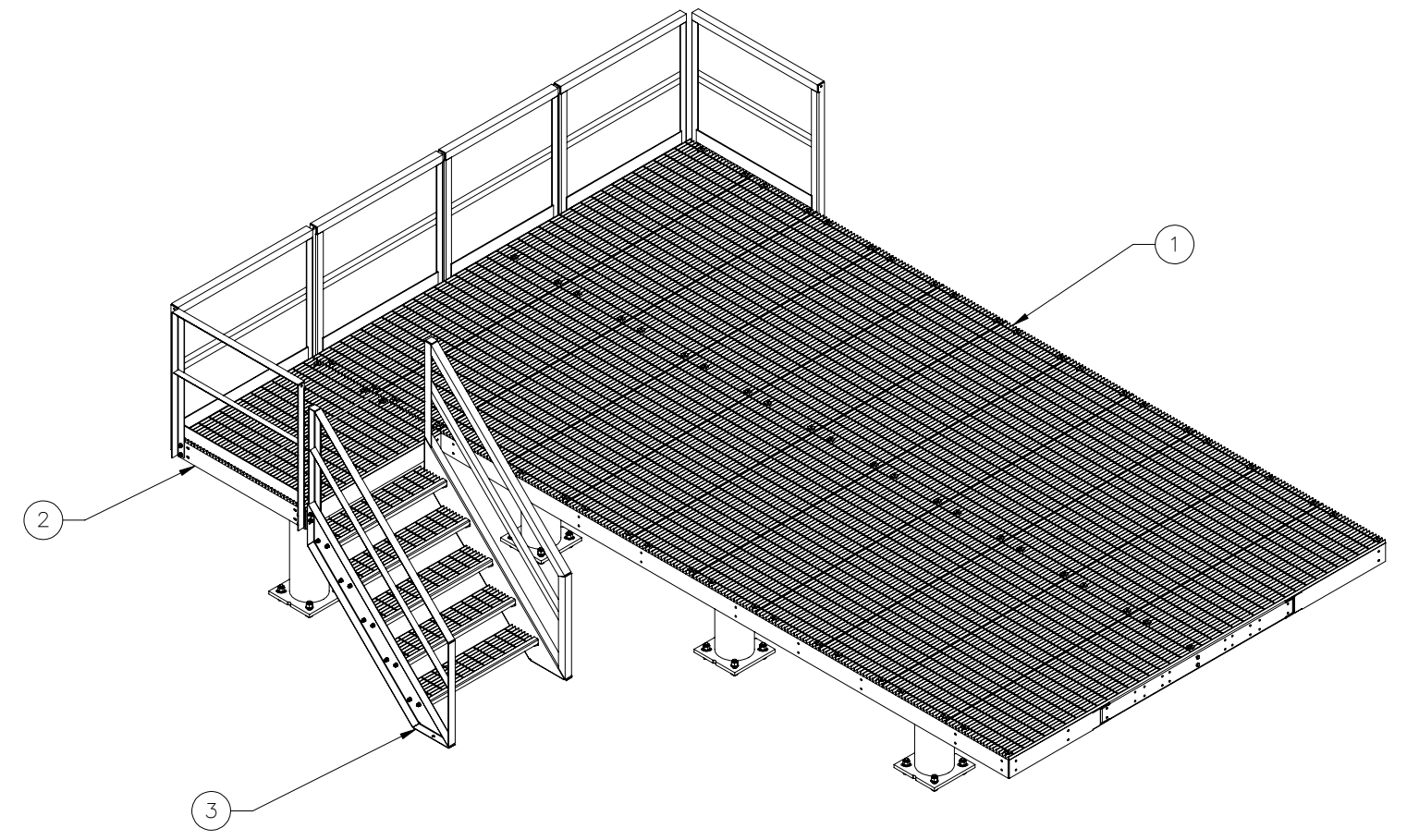
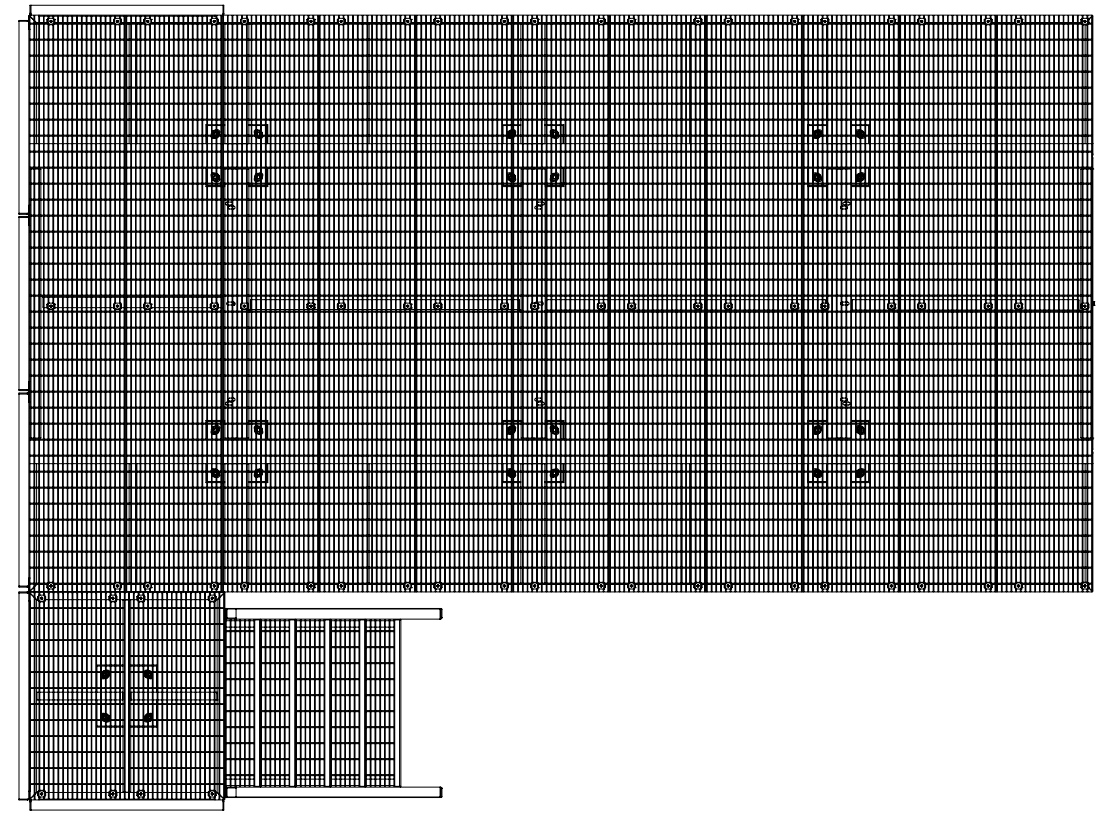
ITEM NO.	QTY REQD	PART NUMBER	DESCRIPTION	LENGTH	WEIGHT
1	1	1001-0010-0077	12' X 22' EQUIPMENT PLATFORM, PARTIAL GUARDRAILS		2810.75
2	1	1003-0030-0006	STAIR LANDING		546.2
3	1	450-000-0133	5 TREAD STAIR ASSY (42" WIDE)		366.5
4	7	1007-T010-0420	3.5 FT EXTENSION		236.1
5	6	1000-0020-0077	QUAD MOUNT 1" LEVELING HARDWARE KIT		15.17
6	10	P-007-021	FORMED C CHANNEL, LEFT WALL		40.14
7	10	P-007-026	FORMED C CHANNEL, RIGHT WALL		40.14
8	2	P-007-024	FORMED CORNER, WALL		60.99
9	18	P-007-022	FORMED ANGLE, WALL CLIP		0.67
10	2	P-007-025	TOP END, WALL FRAME	108"	36.66
11	2	P-007-027	TOP LONG CORNER, WALL FRAME	108"	36.65
12	2	P-007-028	TOP SHORT CORNER, WALL FRAME	66 3/4"	22.88
13	13	P-007-030	WALL PANEL, 38 7/8" WIDTH	120"	35.7
14	2	P-007-031	WALL PANEL, 18 7/8" WIDTH	120"	17.2
15	2	P-007-032	WALL PANEL, 20" WIDTH	120"	18.5
16	1	P-007-033	WALL PANEL, 21 7/16" WIDTH	120"	19.6
17	1	P-007-034	WALL PANEL, 23 1/8" WIDTH	120"	20.8
18	1	P-007-035	FORMED WALL CAP		53.07
19	1	P-007-036	FORMED WALL CAP		50.61
20	1	P-007-037	FORMED WALL CAP		34.33
21	1	P-007-038	FORMED WALL CAP		34.33
22	1	P-007-039	FORMED WALL CAP		50.43
23	1	P-007-040	FORMED WALL CAP		52.86
24	1	P-007-041	C CHANNEL, BRACE		90.54
25	2	P-007-042	WALL CLIP, BRACE		0.79
26	6	BRP-L02-0510	BALLISTIC PANEL, 5' X 10', LVL 2 UL 752, .3125" THK		225.16
27	2	BRP-L02-0410	BALLISTIC PANEL, 4' X 10', LVL 2 UL 752, .3125" THK		180.13
28	8	BRP-L02-C001	BALLISTIC BATTEN STRIP, 4" X 10', LVL 2 UL 752, .3125" THK		15.01
29	1	BRP-L02-C002	BALLISTIC PANEL, 53.875" X 10', LVL 2 UL 752, .3125" THK		202.18
30	2	BRP-L02-0310	BALLISTIC PANEL, 3' X 10', LVL 2 UL 752, .3125" THK		135.10
31	448	002-0SG-0007	#12 X 1 1/4" LG., SELF DRILLING SCREW W. WASHER, GALV.		0.02
32	156	002-0BG-0010	BOLT, HH, .500-13 X 1.50, GALV, A325, PT X 1.00	1 1/2"	0.14
33	312	002-0FW-G002	WASHER, FLAT, .500, GALV, F436		0.03
34	156	002-0LW-G002	WASHER, SPLIT LOCK, .500, GALV		0.014
35	156	002-0NG-0010	NUT, HEX, .500-13, GALV, GR 2H		0.06


SURFACE FINISH <input checked="" type="checkbox"/> UNLESS OTHERWISE SPECIFIED		UNLESS OTHERWISE SPECIFIED DIMENSIONS ARE IN INCHES		APPROVALS		DATE		 ELECTRO MECHANICAL INDUSTRIES, INC. 11230 NEESESHAW DRIVE HOUSTON, TEXAS 77065 1-800-453-0050	
MATERIAL SEE PARTS LIST		TOLERANCES		DRAWN F. BAYEH		12/13/2023		TITLE:	
THIRD ANGLE PROJECTION 		.0 ±.06 .00 ±.015 .000 ±.005		CHECKER J. Breen		12/14/2023		12' X 22' GATE PARKWAY RELO ASSY	
NEXT ASSY		FRACTIONS ± 1/16 ANGLES ± .25°		ENGINEER J. Breen		12/14/2023		SIZE B	
APPLICATIONS		HOLES: DRILLED OR PUNCHED ± 1/32 BURNED ± 1/32		PRODUCTION J. KERNER		12/14/2023		DRAWING NO. 1000-0000-0244	
								REV 0	
								SCALE: 1:48 WEIGHT: 11775.3 lbs. SHEET 1 OF 8	

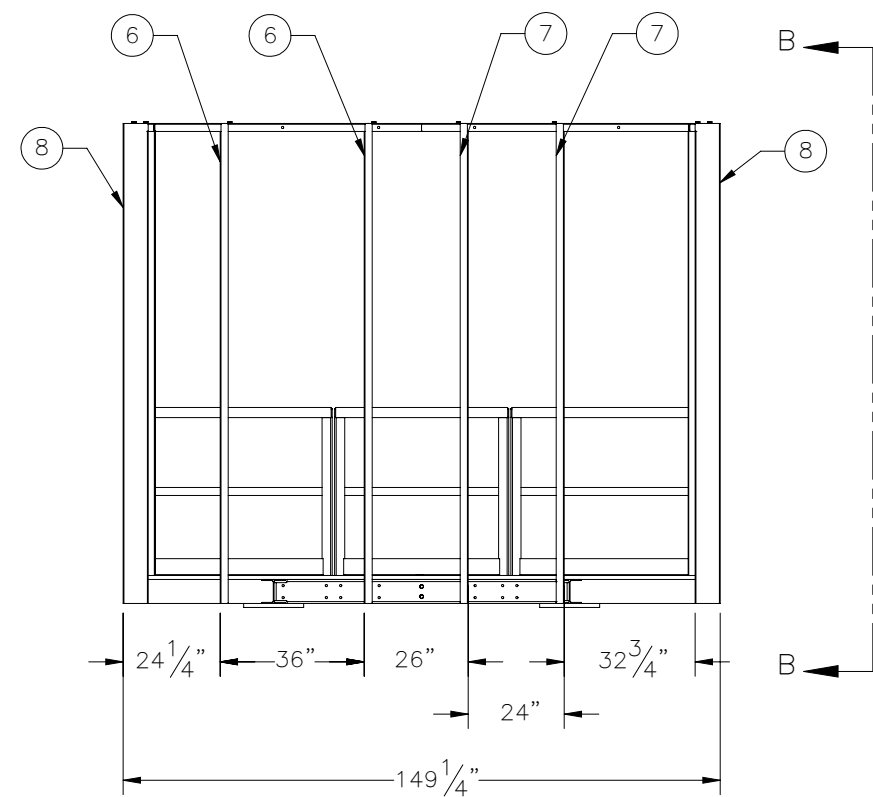
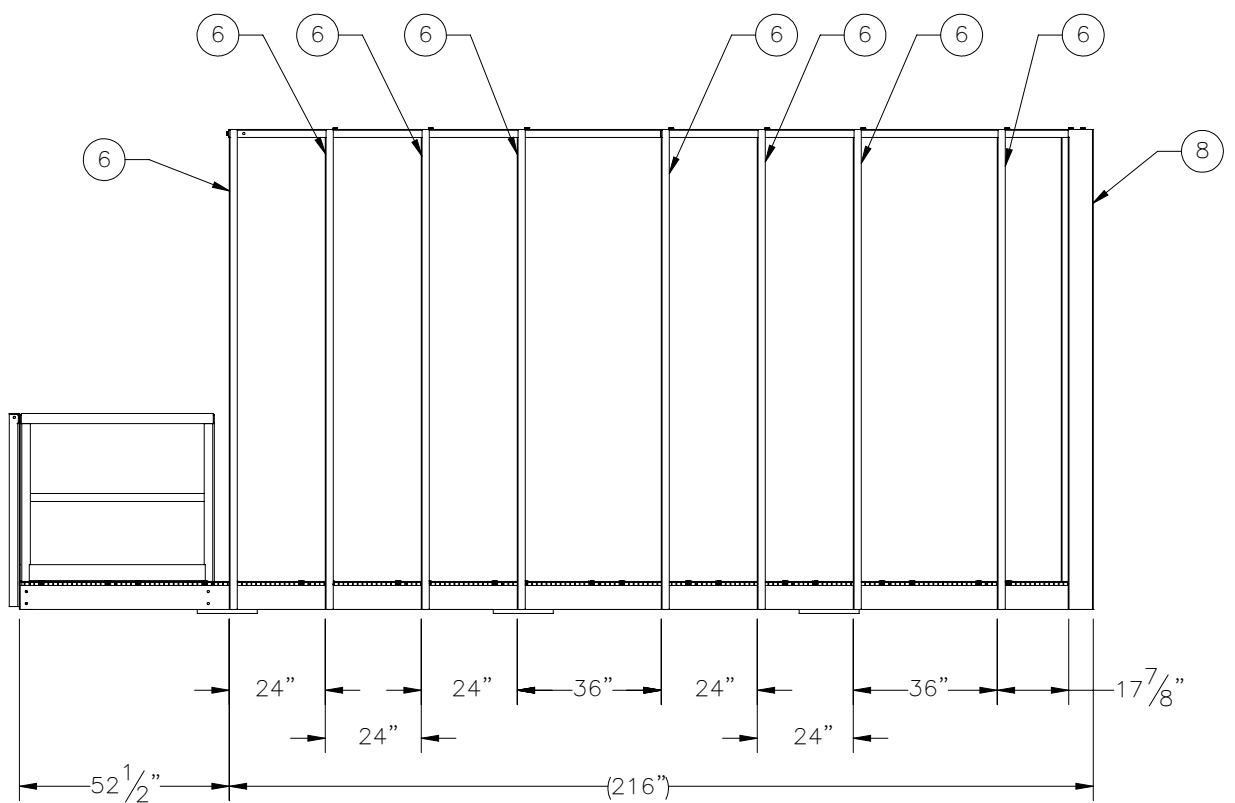
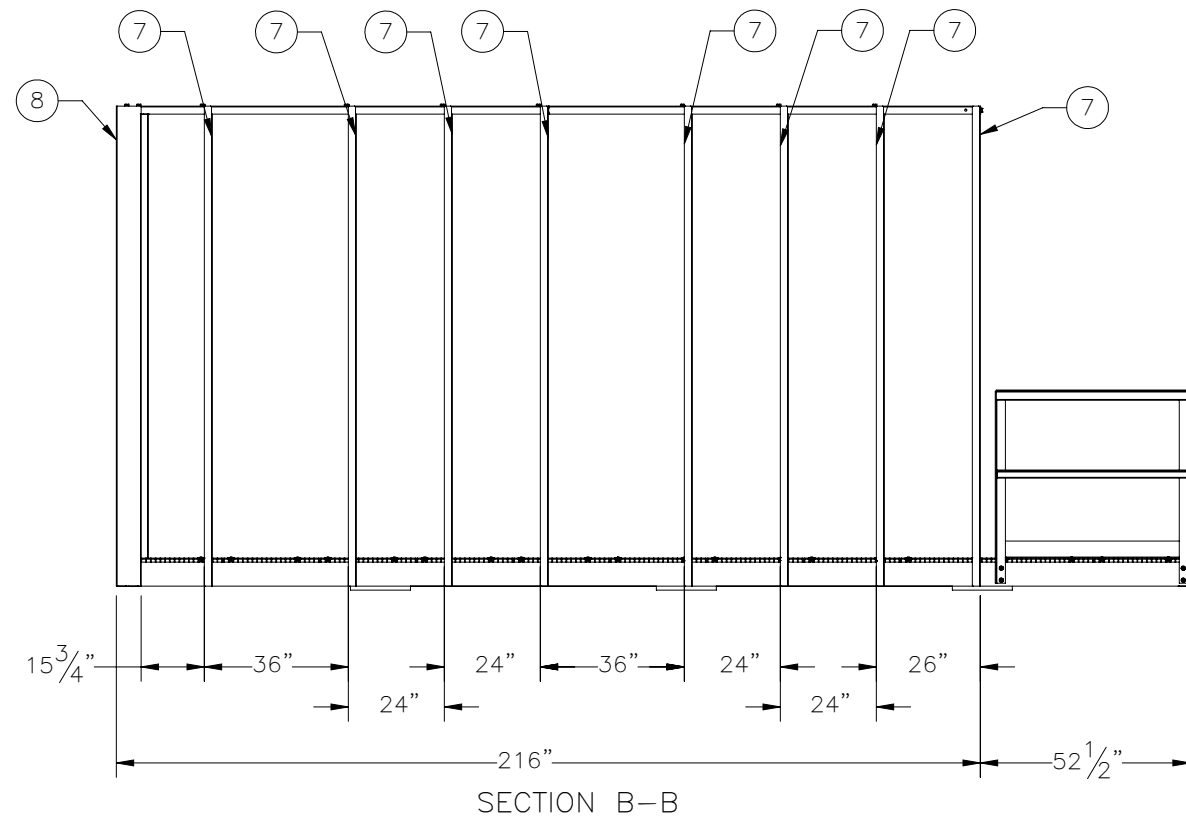
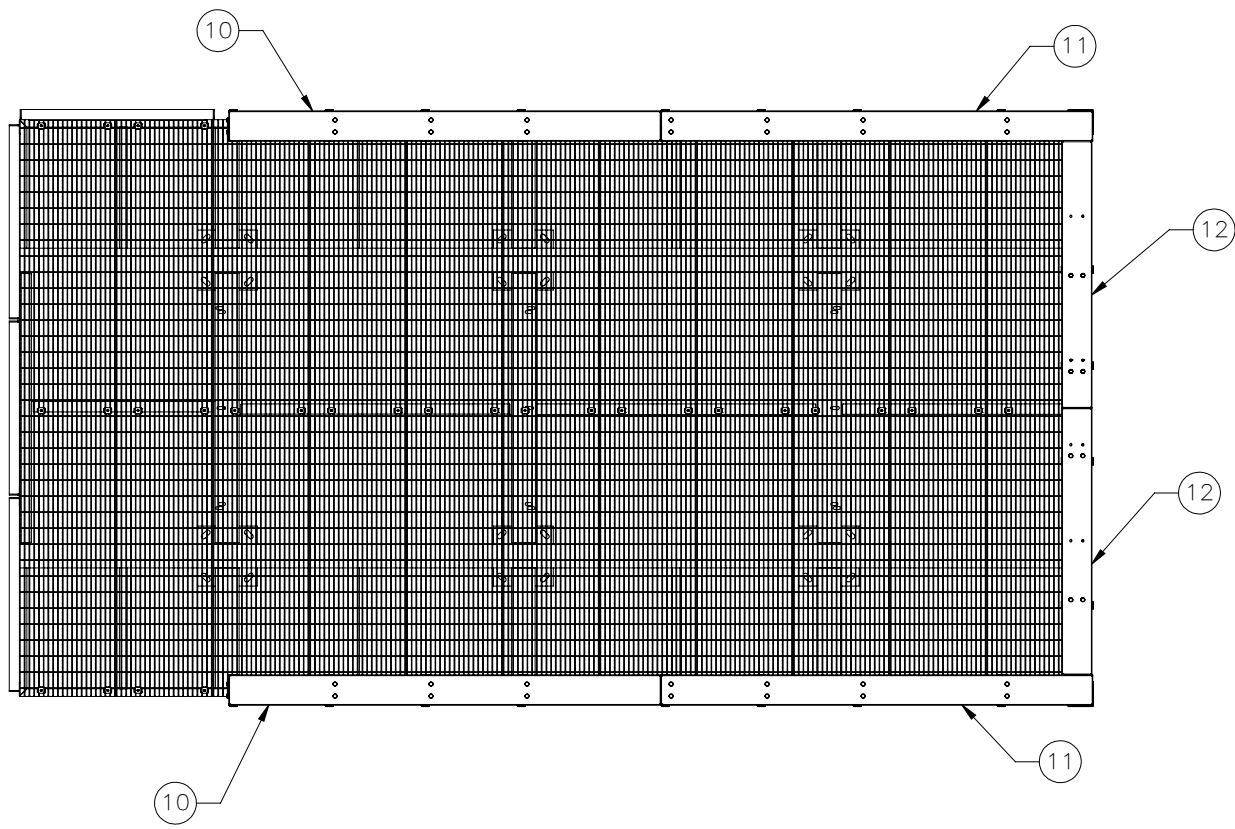


		ELECTRO MECHANICAL INDUSTRIES, INC. 11230 NEESHAW DRIVE HOUSTON, TEXAS 77065 1-800-453-0050	
SIZE	DRAWING NO.	REV	
B	1000-0000-0244	0	
SCALE:	1:48	SHEET 2 OF 8	


A A

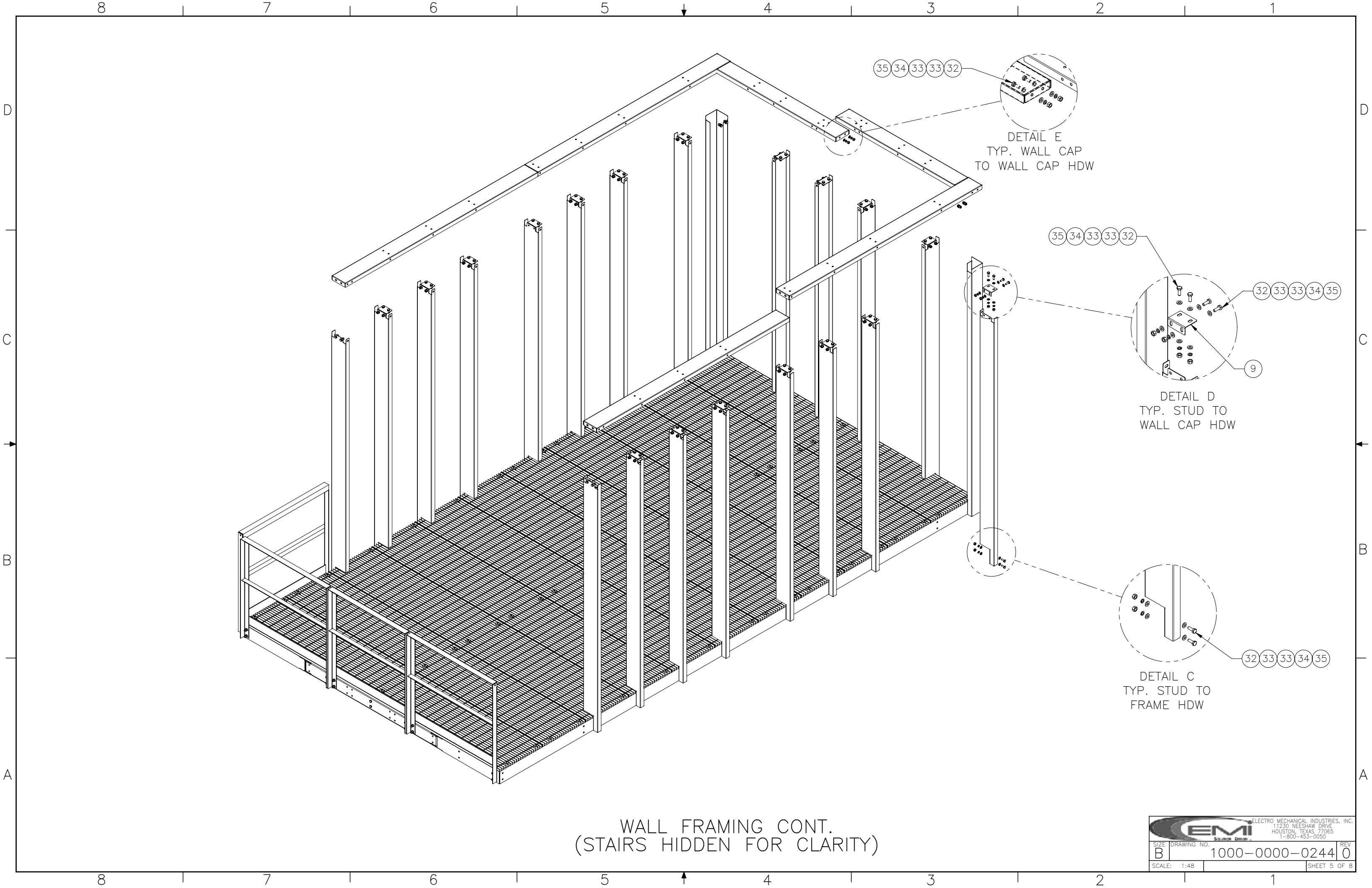


		ELECTRO MECHANICAL INDUSTRIES, INC. 11230 NEESHAW DRIVE HOUSTON, TEXAS 77065 1-800-453-0050	
SIZE	DRAWING NO.	REV.	
B	1000-0000-0244	0	
SCALE: 1:48			SHEET 3 OF 8

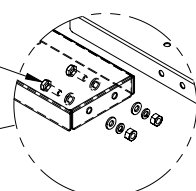


WALL FRAMING  
(STAIRS HIDDEN FOR CLARITY)

		ELECTRO MECHANICAL INDUSTRIES, INC. 11230 NEESHAW DRIVE HOUSTON, TEXAS 77065 1-800-453-0050	
SIZE	DRAWING NO.	REV.	
B	1000-0000-0244	0	
SCALE:	1:48	SHEET 4 OF 8	

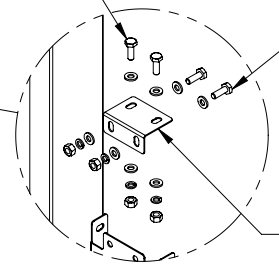


35 34 33 33 32



DETAIL E  
TYP. WALL CAP  
TO WALL CAP HDW

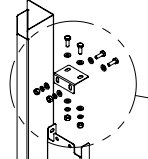
35 34 33 33 32



DETAIL D  
TYP. STUD TO  
WALL CAP HDW

32 33 33 34 35


9

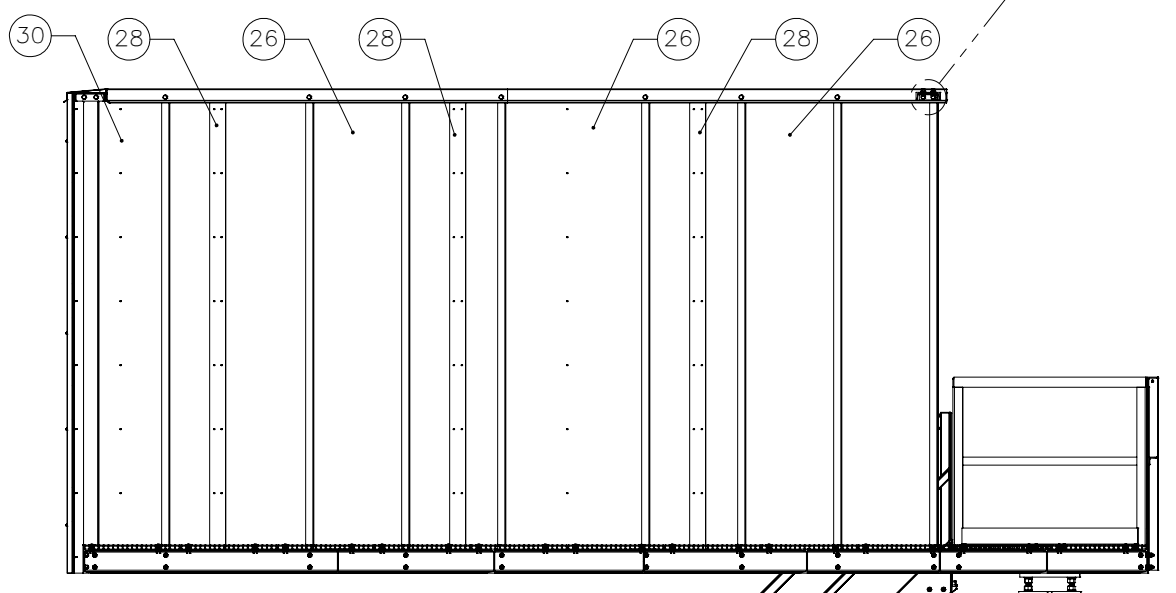
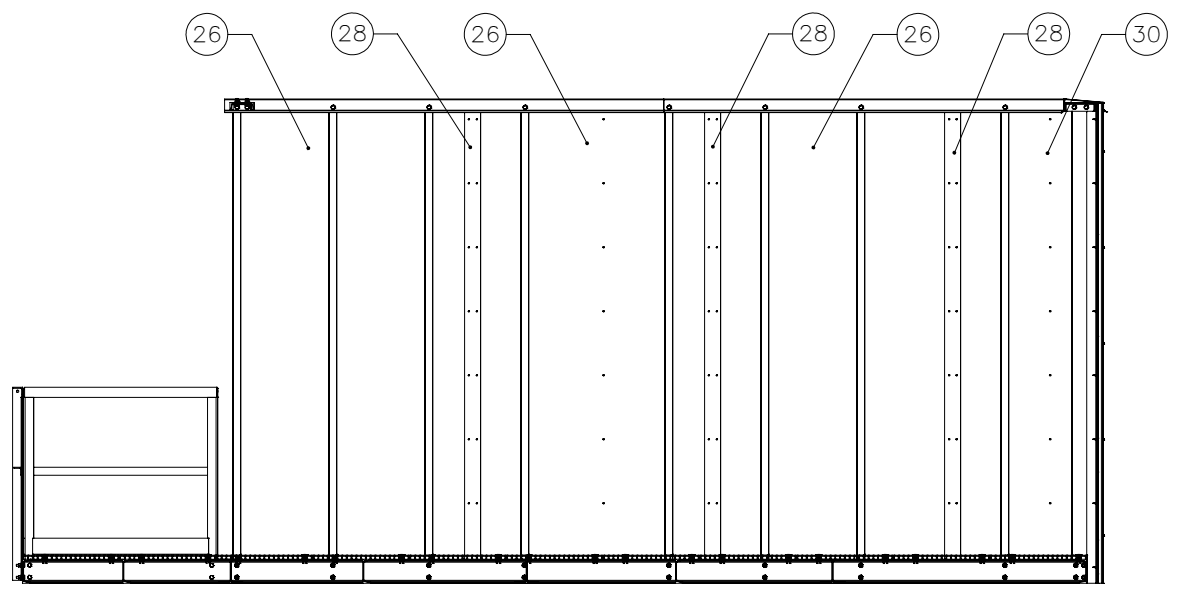
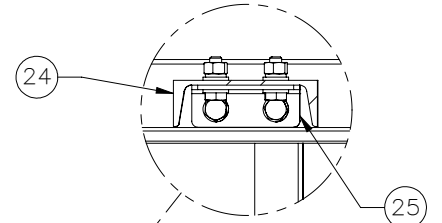
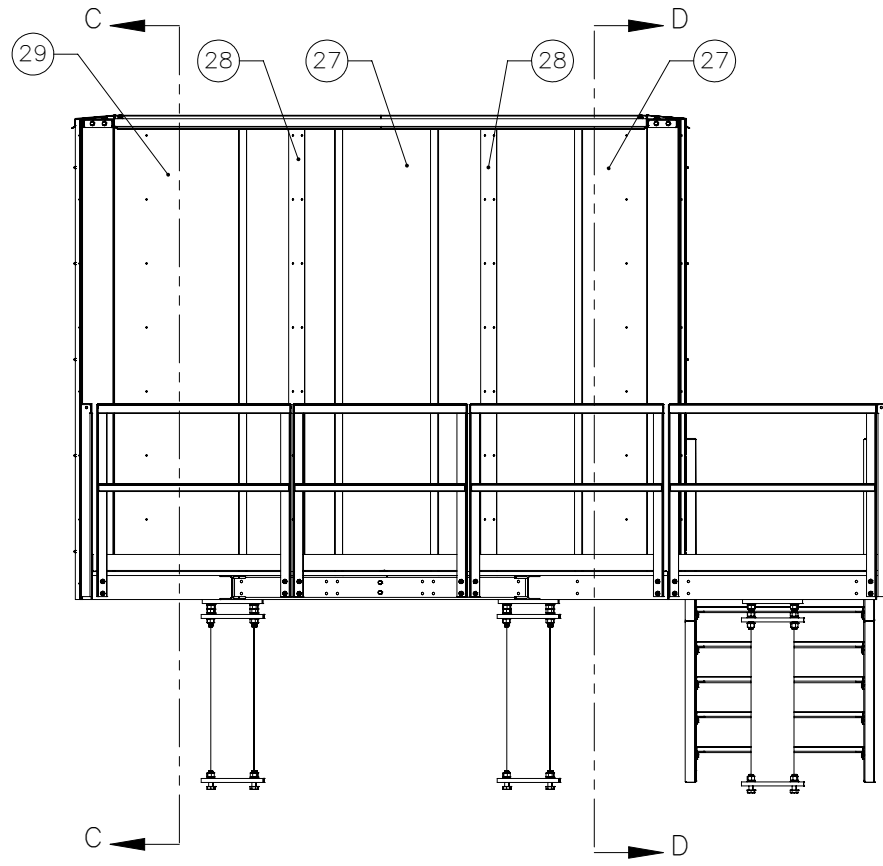
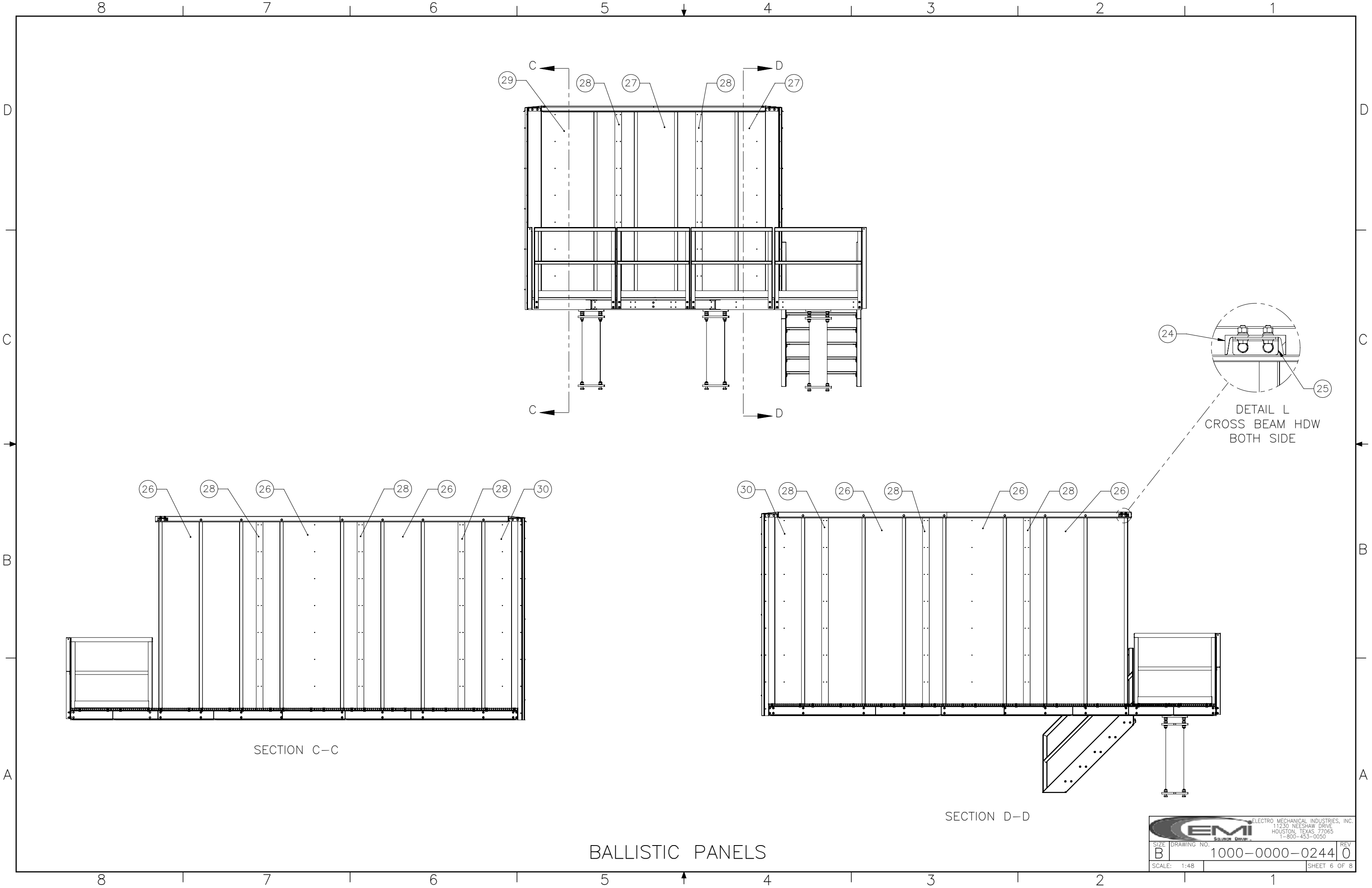


DETAIL C  
TYP. STUD TO  
FRAME HDW


32 33 33 34 35

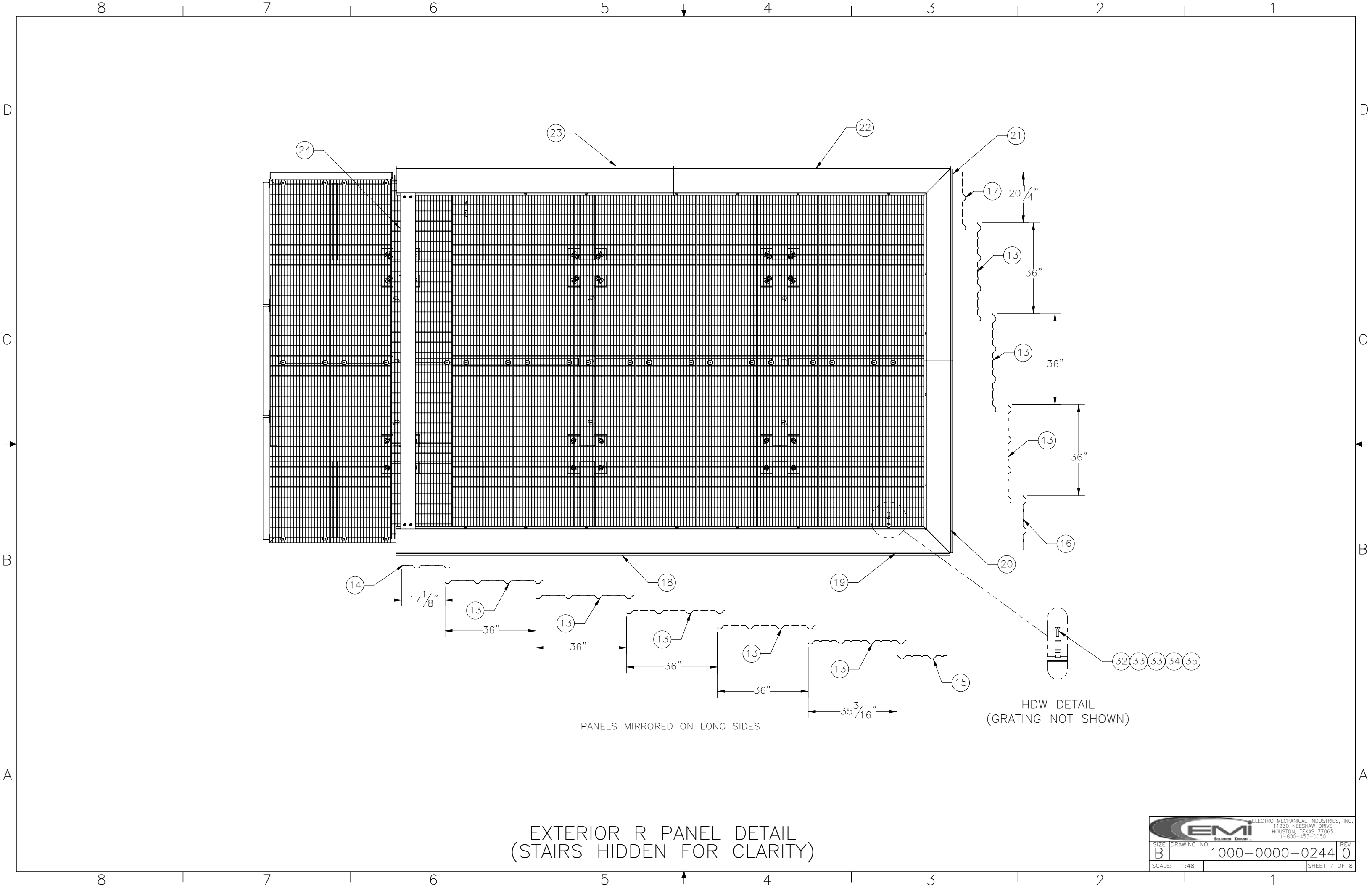
WALL FRAMING CONT.  
(STAIRS HIDDEN FOR CLARITY)

 ELECTRO MECHANICAL INDUSTRIES, INC. 11230 NEESHAW DRIVE HOUSTON, TEXAS 77065 1-800-453-0050		REV
		0
SIZE	DRAWING NO.	REV
B	1000-0000-0244	0
SCALE: 1:48	SHEET 5 OF 8	



BALLISTIC PANELS


		ELECTRO MECHANICAL INDUSTRIES, INC. 11230 NEESHAW DRIVE HOUSTON, TEXAS 77065 1-800-453-0050	
SIZE	DRAWING NO.	REV	
B	1000-0000-0244	0	
SCALE:	1:48	SHEET 6 OF 8	



EXTERIOR R PANEL DETAIL  
(STAIRS HIDDEN FOR CLARITY)

PANELS MIRRORED ON LONG SIDES

HDW DETAIL  
(GRATING NOT SHOWN)

		ELECTRO MECHANICAL INDUSTRIES, INC. 11230 NEESHAW DRIVE HOUSTON, TEXAS 77065 1-800-453-0050	
SIZE	DRAWING NO.	REV	
B	1000-0000-0244	0	
SCALE: 1:48			SHEET 7 OF 8

8 7 6 5 4 3 2 1

D

D

C

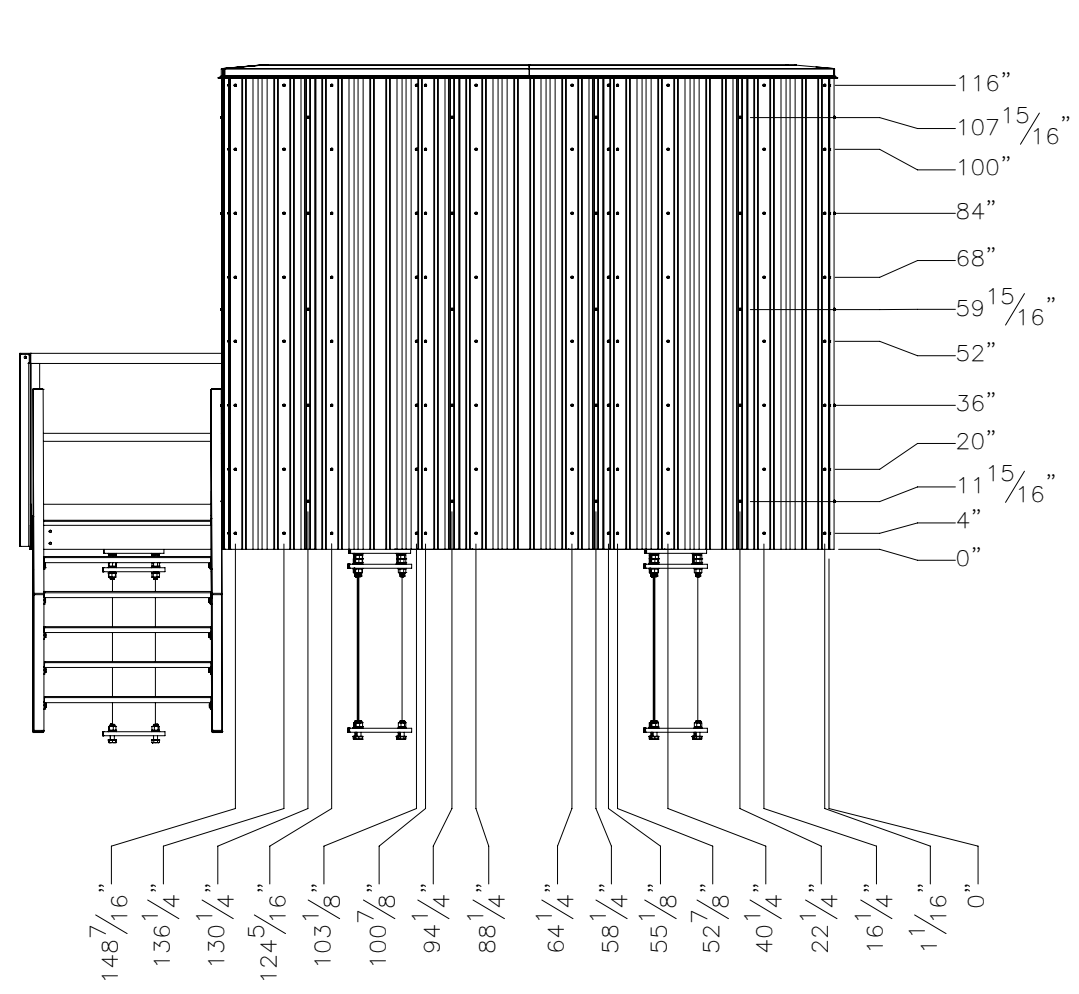
C

B

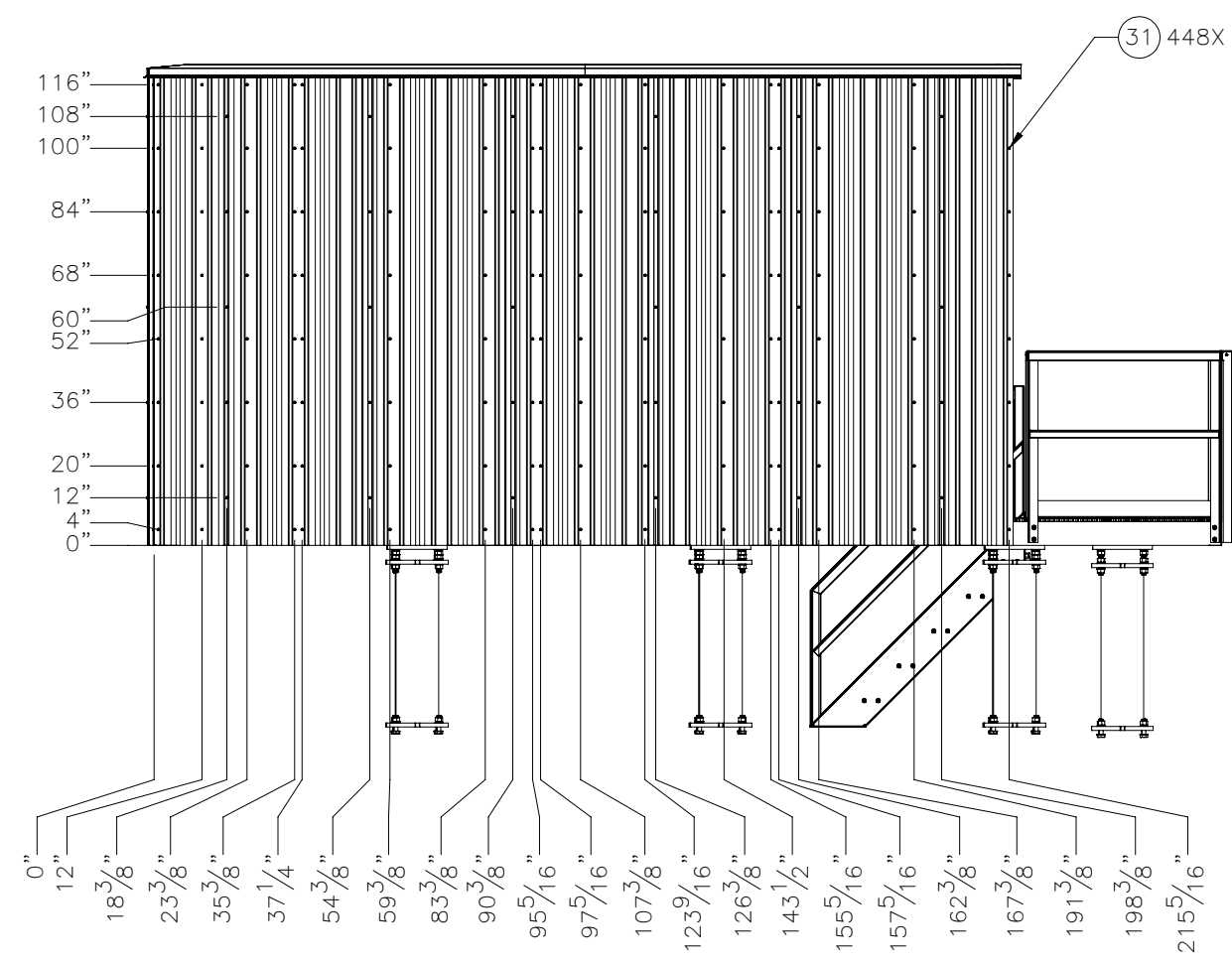
B

A

A



- 148<sup>7</sup>/<sub>16</sub>"
- 136<sup>1</sup>/<sub>4</sub>"
- 130<sup>1</sup>/<sub>4</sub>"
- 124<sup>5</sup>/<sub>16</sub>"
- 103<sup>1</sup>/<sub>8</sub>"
- 100<sup>7</sup>/<sub>8</sub>"
- 94<sup>1</sup>/<sub>4</sub>"
- 88<sup>1</sup>/<sub>4</sub>"
- 64<sup>1</sup>/<sub>4</sub>"
- 58<sup>1</sup>/<sub>4</sub>"
- 55<sup>1</sup>/<sub>8</sub>"
- 52<sup>7</sup>/<sub>8</sub>"
- 40<sup>1</sup>/<sub>4</sub>"
- 22<sup>1</sup>/<sub>4</sub>"
- 16<sup>1</sup>/<sub>4</sub>"
- 1<sup>1</sup>/<sub>16</sub>"
- 0"



- 0"
- 12"
- 18<sup>3</sup>/<sub>8</sub>"
- 23<sup>3</sup>/<sub>8</sub>"
- 35<sup>3</sup>/<sub>8</sub>"
- 37<sup>1</sup>/<sub>4</sub>"
- 54<sup>3</sup>/<sub>8</sub>"
- 59<sup>3</sup>/<sub>8</sub>"
- 83<sup>3</sup>/<sub>8</sub>"
- 90<sup>3</sup>/<sub>8</sub>"
- 95<sup>5</sup>/<sub>16</sub>"
- 97<sup>5</sup>/<sub>16</sub>"
- 107<sup>3</sup>/<sub>8</sub>"
- 123<sup>9</sup>/<sub>16</sub>"
- 126<sup>3</sup>/<sub>8</sub>"
- 143<sup>1</sup>/<sub>2</sub>"
- 155<sup>5</sup>/<sub>16</sub>"
- 157<sup>5</sup>/<sub>16</sub>"
- 162<sup>3</sup>/<sub>8</sub>"
- 167<sup>3</sup>/<sub>8</sub>"
- 191<sup>3</sup>/<sub>8</sub>"
- 198<sup>3</sup>/<sub>8</sub>"
- 215<sup>5</sup>/<sub>16</sub>"

HDW MIRRORED ON LONG SIDES

8 7 6 5 4 3 2 1