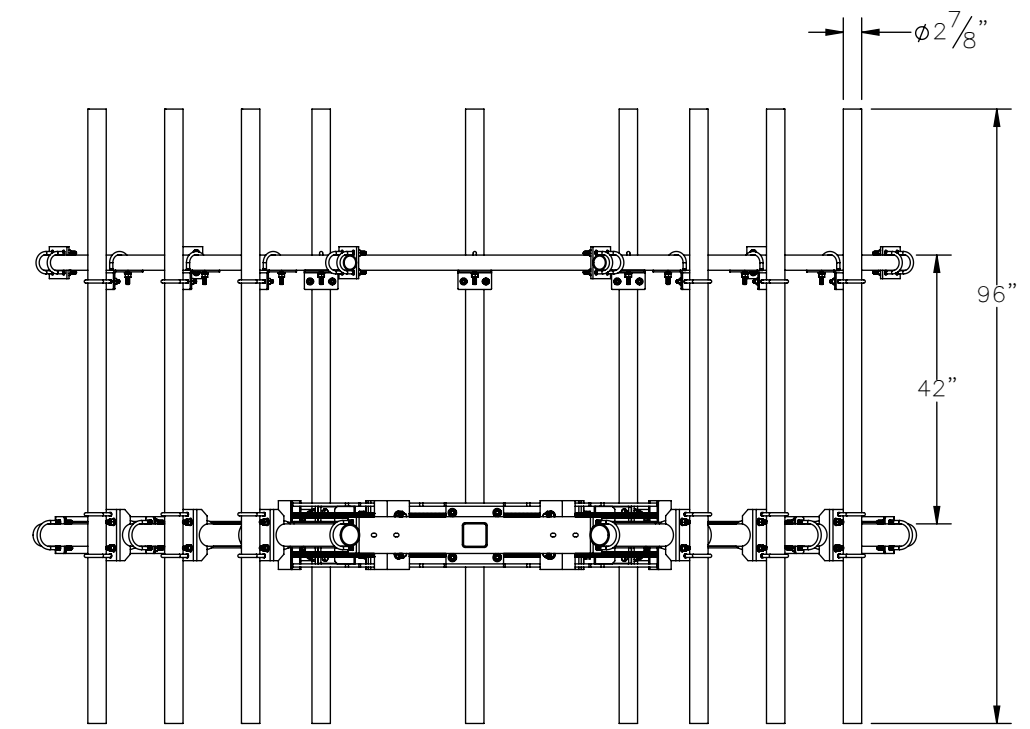
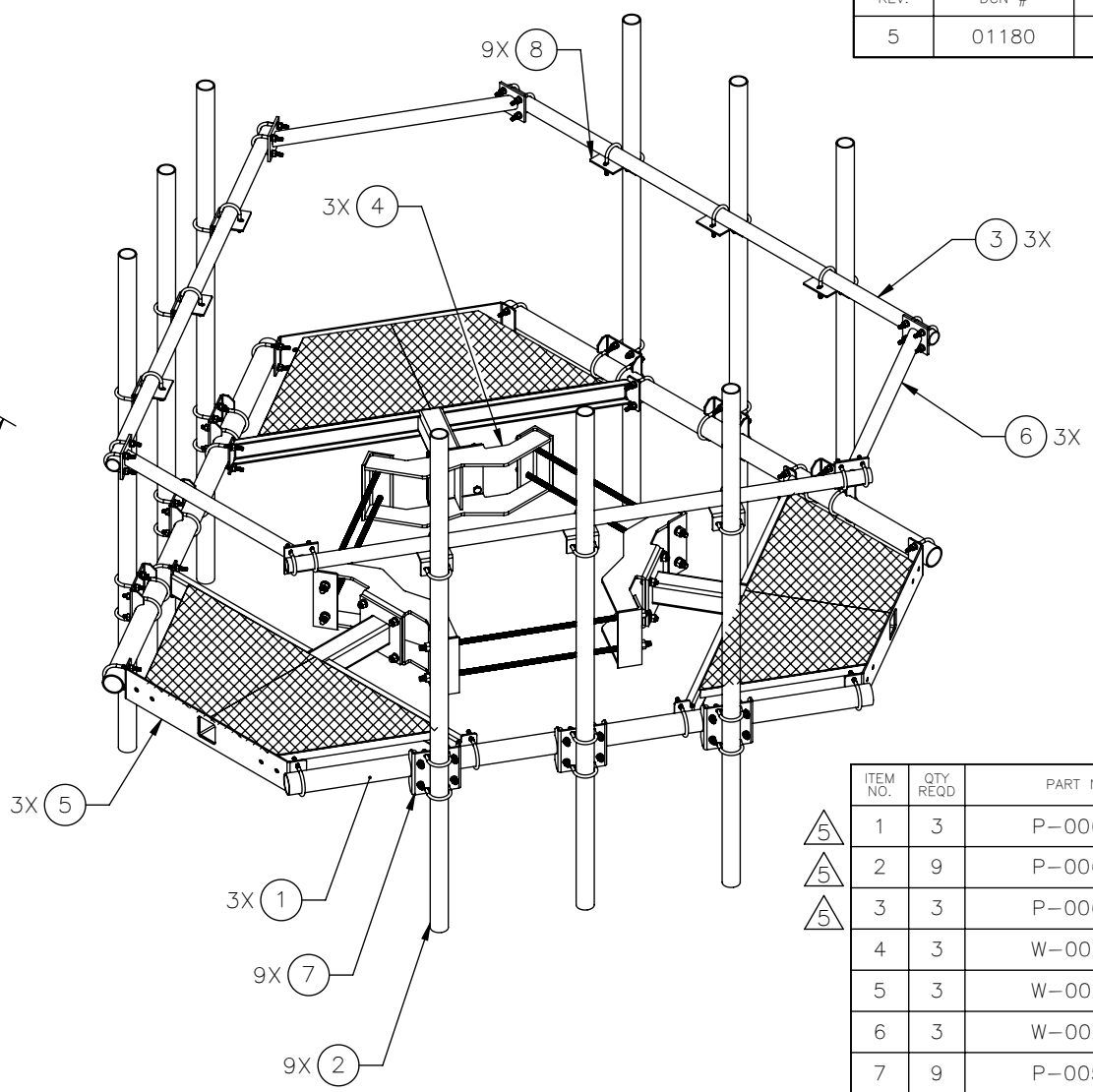
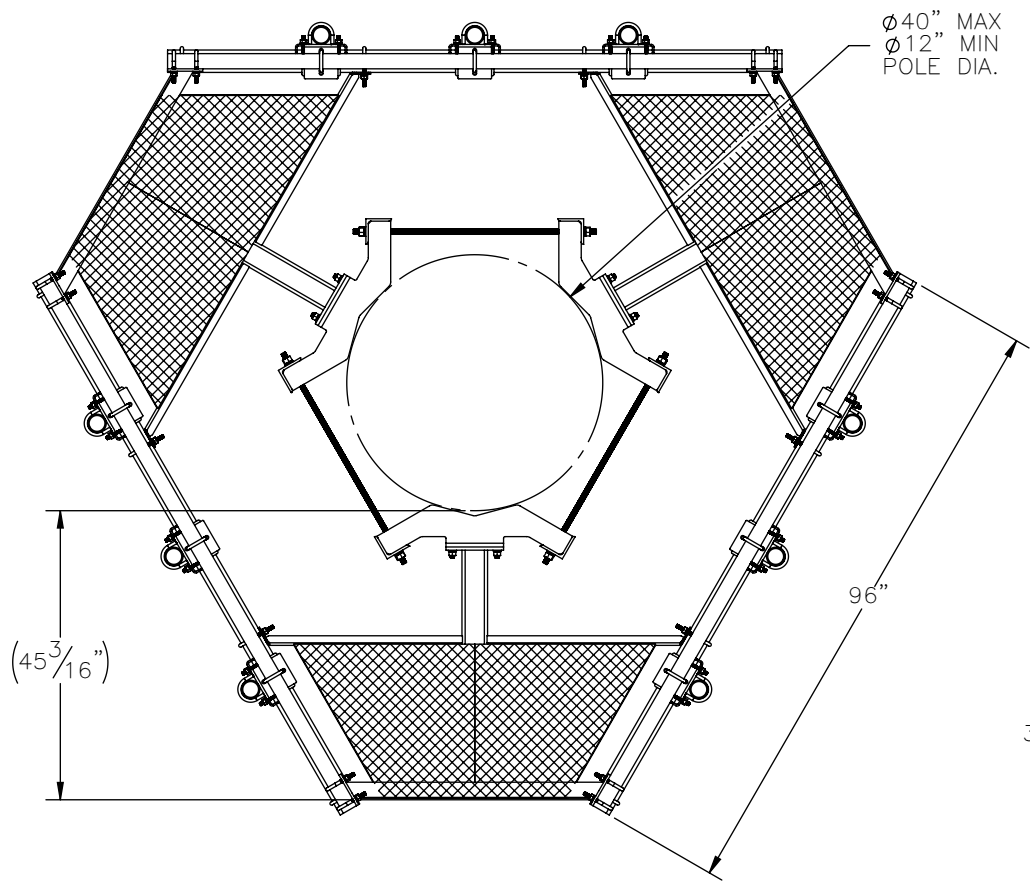

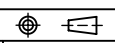


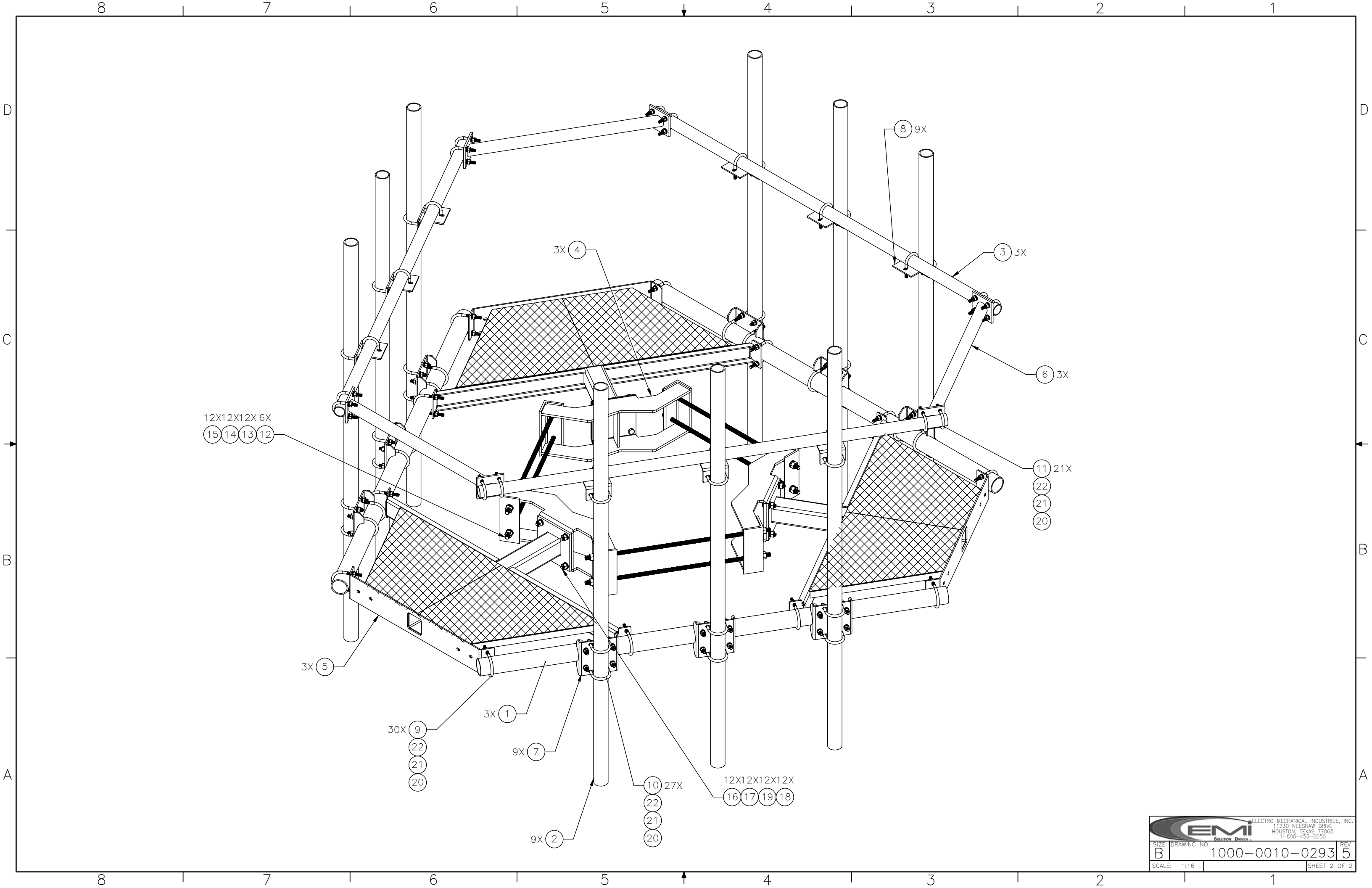
THE INFORMATION CONTAINED IN THIS DRAWING IS THE SOLE PROPERTY OF ELECTRO MECHANICAL INDUSTRIES, INC. ANY REPRODUCTION IN PART OR WHOLE WITHOUT THE WRITTEN PERMISSION OF ELECTRO MECHANICAL IND., IS PROHIBITED.

REVISIONS					
REV.	DCN #	DESCRIPTION	DATE	BY	APPROVED
5	01180	ADDED PIPE P/Ns TO ITEMS 1,2, & 3	8.30.22	CS	JPB



ITEM NO.	QTY REQD	PART NUMBER	DESCRIPTION	LENGTH	WEIGHT
1	3	P-006-302	SUPPORT PIPE, 3.50" O.D.	96"	60.66
2	9	P-006-253	SUPPORT PIPE, 2.875" O.D.	96"	46.39
3	3	P-006-303	SUPPORT PIPE, 2.375" O.D.	96"	29.25
4	3	W-002-232	RING MOUNT WELDMENT		69.07
5	3	W-002-233	PLATFORM ARM WELDMENT		117.05
6	3	W-002-234	CORNER HANDRAIL		17.01
7	9	P-005-068	PIPE MOUNT CROSSOVER PLATE		5.75
8	9	P-005-069	PIPE STANDOFF BRACKET		2.85
9	30	002-00U-G043	U-BOLT, .500-13 X 3.50 I.D. X 5.75 HT, 3.0 THD, GALV.		0.74
10	27	002-00U-G044	U-BOLT, .500-13 X 3.0 I.D. X 4.5 HT, 1.63 THD, GALV.		0.63
11	21	002-00U-G045	U-BOLT, .500-13 X 2.44 I.D. X 4.63 HT, 2.5 THD, GALV.		0.62
12	6	002-0AT-G013	ROD, THREADED, .75-10 X 38.00 LG, ASTM A193 B7, GALV.		4.29
13	12	002-0NG-0002	NUT, HX, .75-10UNC, GR 2H, GALV		0.19
14	12	002-0LW-G003	WASHER, SPLIT LOCK, .75, GALV		0.05
15	12	002-0FW-G003	FW, .75 F436, HDG		0.04
16	12	002-0BG-0273	BOLT, HX HD, .625-11UNC X 2.25 LG, ASTM A325, GALV		0.04
17	12	002-0NG-0026	NUT, HX, ANCO LOCKNUT, .625-11UNC, GR 2H, GALV		0.116
18	12	002-0FW-G004	WASHER, FLAT, .625", ASTM F436, GALV		0.03
19	12	002-0LW-G004	WASHER, SPLIT LOCK, .625 INCH, GALV		0.03
20	156	002-0NG-0010	NUT, HEX, .500-13UNC, GR 2H, GALV		0.06
21	156	002-0LW-G002	WASHER, SPLIT LOCK, .500", GALV		0.01
22	156	002-0FW-G002	FW, .50, F436, HDG		0.02

SURFACE FINISH <input checked="" type="checkbox"/> UNLESS OTHERWISE SPECIFIED		UNLESS OTHERWISE SPECIFIED DIMENSIONS ARE IN INCHES		APPROVALS		DATE		 ELECTRO MECHANICAL INDUSTRIES, INC. 11250 NEESESHAW DRIVE HOUSTON, TEXAS 77065 1-800-453-0050	
MATERIAL SEE PARTS LIST		TOLERANCES .0 ±.06 .00 ±.015 .000 ±.005 FRACTIONS ± 1/16 ANGLES ± .25° HOLES: DRILLED OR PUNCHED ± 1/32 BURNED ± 1/32		DRAWN C. SANCHEZ		10/20/2021			
THIRD ANGLE PROJECTION 				CHECKER B. HUTSON		10/20/2021		SIZE B DRAWING NO. 1000-0010-0293 REV 5 SCALE: 1:30 WEIGHT: 1473.39 lbs. SHEET 1 OF 2	
NEXT ASSY USED ON APPLICATIONS				ENGINEER J. BREEN		10/21/2021			



		ELECTRO MECHANICAL INDUSTRIES, INC. 11230 NEESHAW DRIVE HOUSTON, TEXAS 77065 1-800-453-0050	
SIZE B	DRAWING NO. 1000-0010-0293	REV 5	
SCALE: 1:16	SHEET 2 OF 2		