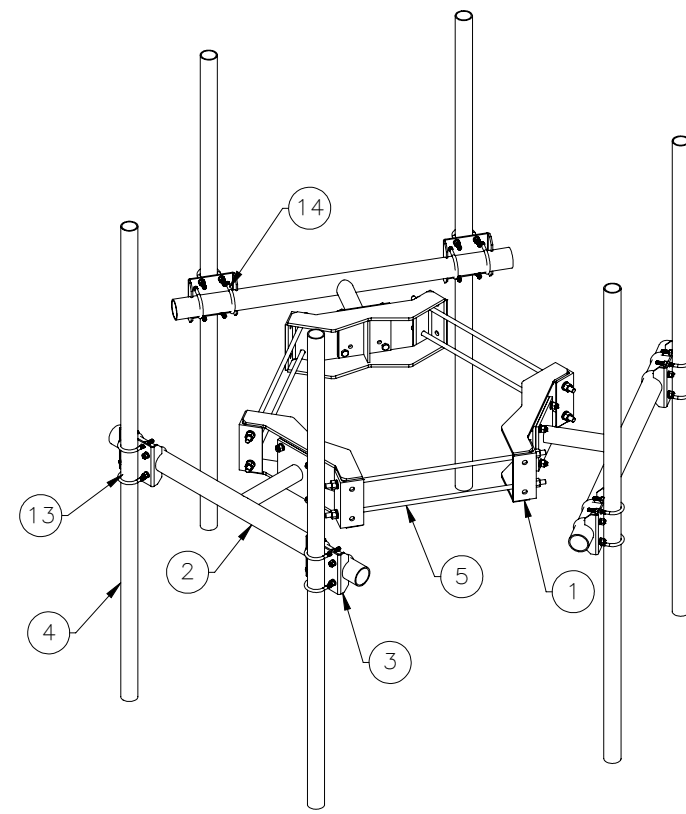
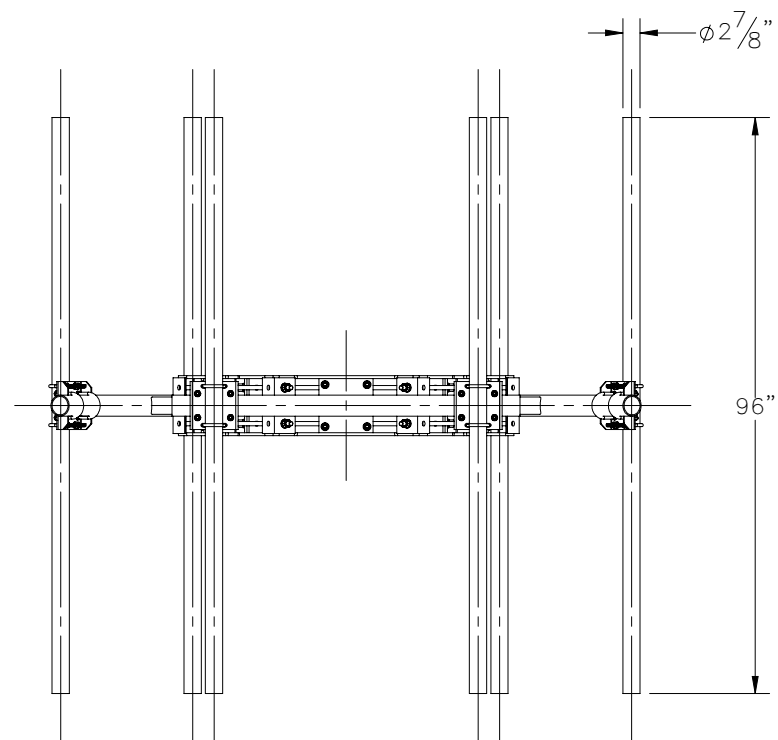
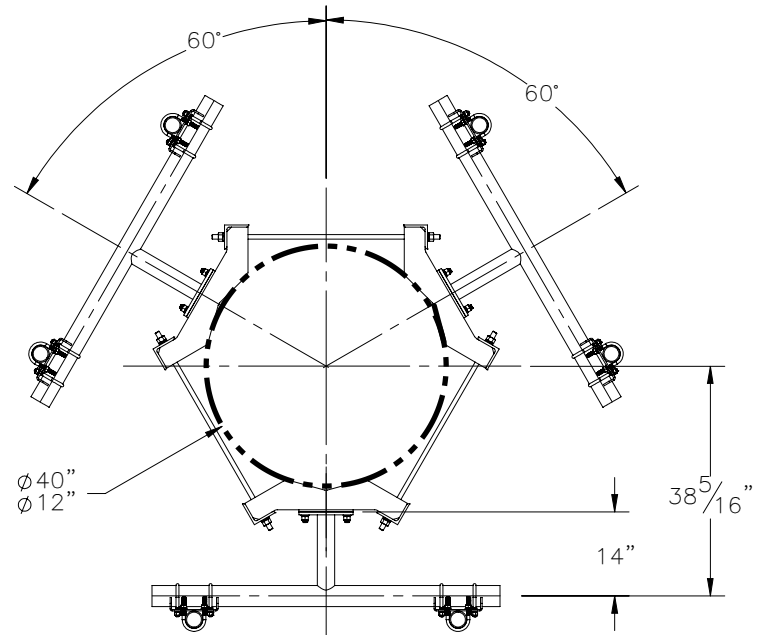

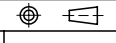


THE INFORMATION CONTAINED IN THIS DRAWING IS THE SOLE PROPERTY OF ELECTRO MECHANICAL INDUSTRIES, INC. ANY REPRODUCTION IN PART OR WHOLE WITHOUT THE WRITTEN PERMISSION OF ELECTRO MECHANICAL IND., IS PROHIBITED.



ITEM NO.	QTY REQD	PART NUMBER	DESCRIPTION	LENGTH	WEIGHT
1	3	W-002-232	RING MOUNT WELDMENT		57.46
2	3	W-002-239	T-ARM WELDMENT		53.63
3	6	P-005-077	PIPE MOUNT CROSSOVER PLATE		5.72
4	6		P2.5" X 96" LG., SCH 40,ASTM A500 GR B		46.39
5	6	COMMON	ROD, THREADED, .75-10 X 38.00 LG, ASTM A193 B7, GALV.	38"	4.77
6	12	002-0FW-G003	FW, .75 F436, HDG		0.04
7	12	002-0LW-G003	WASHER, SPLIT LOCK, .75, GALV		0.05
8	12	002-0NG-0002	NUT, HX, .75-10UNC, GR 2H, GALV		0.19
9	12	002-0BG-0273	BOLT, HX HD, .625-11UNC X 2.25 LG, ASTM A325, GALV		0.04
10	12	002-0FW-G004	WASHER, FLAT, .625", ASTM F436, GALV		0.03
11	12	002-0LW-G004	WASHER, SPLIT LOCK, .625 INCH, GALV		0.03
12	12	002-0NG-0026	NUT, HX, ANCO LOCKNUT, .625-11UNC, GR 2H, GALV		0.116
13	12	002-00U-G010	U-BOLT, .500-13 X 3.0 THD. LG FOR 2.5 PIPE		0.661
14	12	002-00U-G021	U-BOLT, .500-13 X 1.5 THD LG., 3.50 I.D. X 5.0 HT, ASTM A307, GALV.		0.09
15	48	002-0FW-G002	FW, .50, F436, HDG		0.02
16	48	002-0LW-G002	WASHER, SPLIT LOCK, .500", GALV		0.01
17	48	002-0NG-0010	NUT, HEX, .500-13UNC, GR 2H, GALV		0.06

SURFACE FINISH <input checked="" type="checkbox"/> UNLESS OTHERWISE SPECIFIED		UNLESS OTHERWISE SPECIFIED DIMENSIONS ARE IN INCHES		APPROVALS		DATE		 ELECTRO MECHANICAL INDUSTRIES, INC. 11250 NEESESHAW DRIVE HOUSTON, TEXAS 77065 1-800-453-0050	
MATERIAL SEE PARTS LIST		TOLERANCES		DRAWN P. GUTIERREZ		8/20/2021		TITLE: MONOPOLE T-ARM MOUNT	
THIRD ANGLE PROJECTION 		FRACTIONS ± 1/16		CHECKER				ENGINEER	
NEXT ASSY USED ON		ANGLES ± .25°		PRODUCTION				SIZE B	
APPLICATIONS		HOLES: DRILLED OR PUNCHED ± 1/32		SCALE: 1:32		WEIGHT: 694.16 lbs.		DRAWING NO. 1000-0010-0295 QUOTE	
		BURNED ± 1/32		SHEET 1 OF 1				REV -	