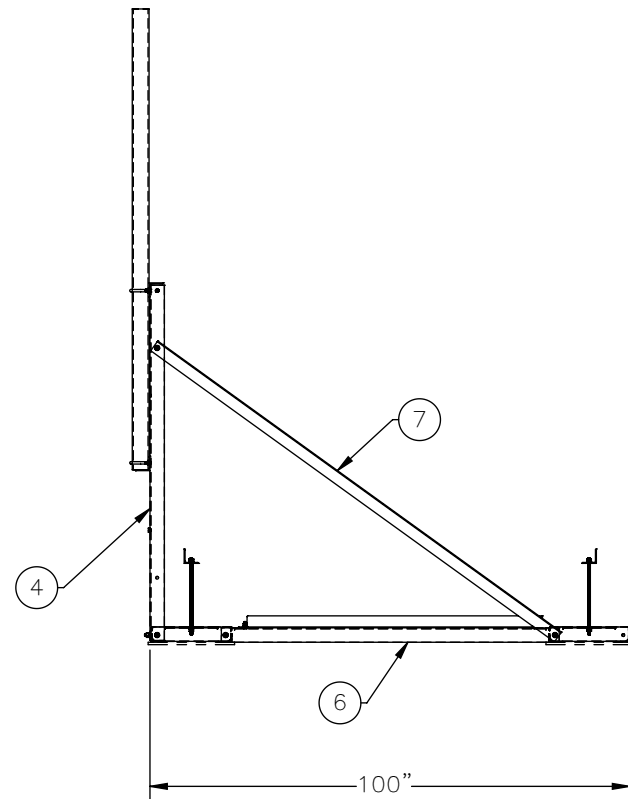
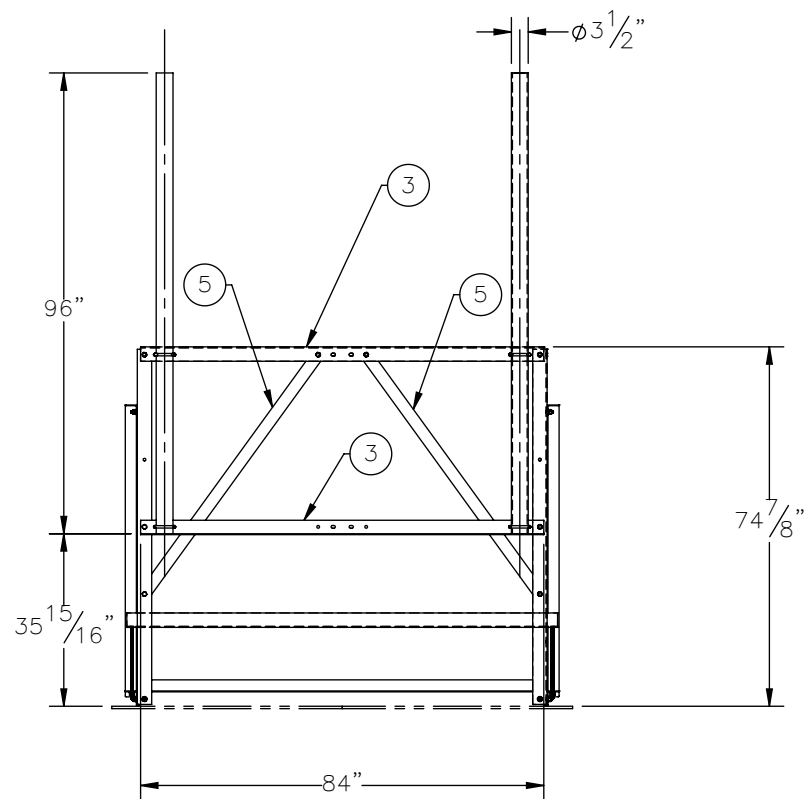
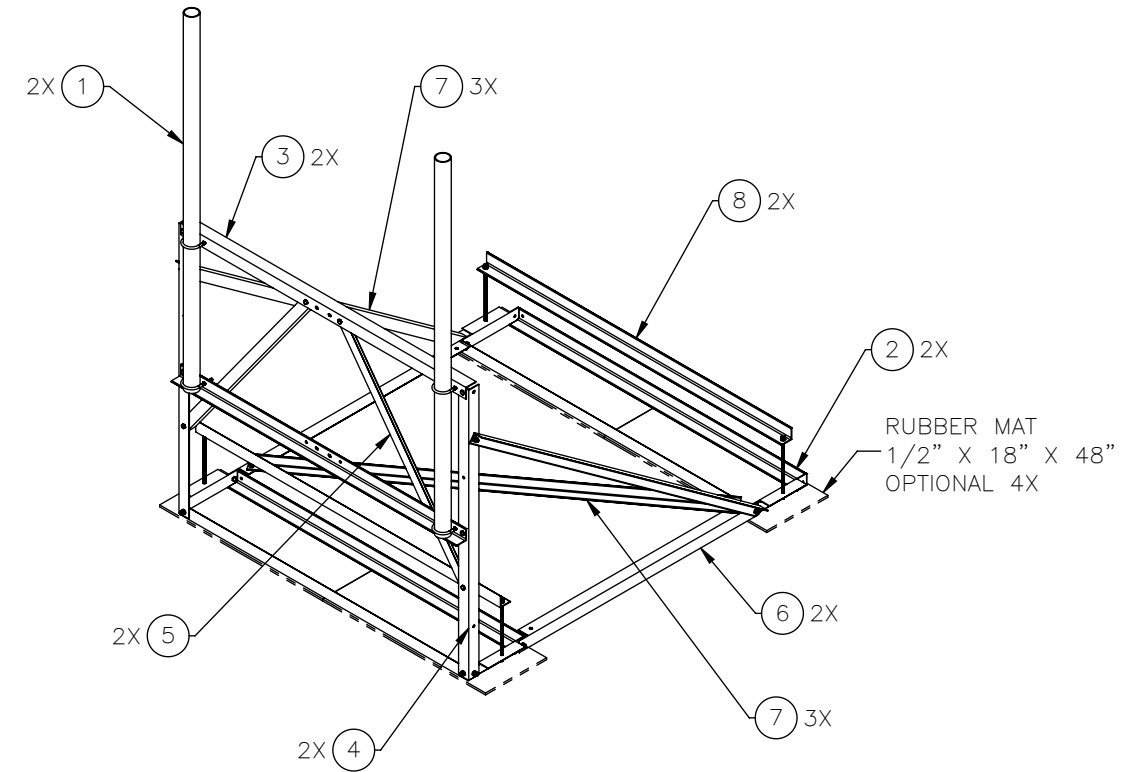
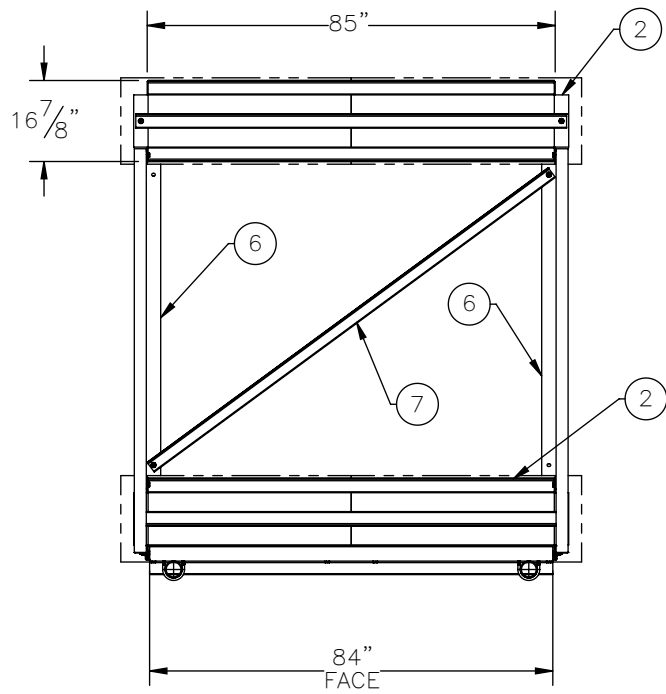

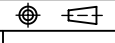


THE INFORMATION CONTAINED IN THIS DRAWING IS THE SOLE PROPERTY OF ELECTRO MECHANICAL INDUSTRIES, INC. ANY REPRODUCTION IN PART OR WHOLE WITHOUT THE WRITTEN PERMISSION OF ELECTRO MECHANICAL IND., IS PROHIBITED.



ITEM NO.	QTY REQD	PART NUMBER	DESCRIPTION	LENGTH	WEIGHT
1	2	1000-0010-0321_1	PIPE, 3.00 INCH, SCH. 40, ASTM A500 GR. B STL., PP1-0300-S40M	96"	60.66
2	2	W-002-231	ROOF MOUNT BASE WELDMENT		60.94
3	2	P-005-231	FRONT FACE HORIZONTAL ANGLE		25.91
4	2	P-005-225	FRONT FACE VERTICAL ANGLE		22.85
5	2	P-005-226	FRONT FACE DIAGONAL ANGLE		15.95
6	2	P-005-227	SIDE FACE HORIZONTAL ANGLE		20.96
7	3	P-005-228	DIAGONAL BRACE ANGLE		26.28
8	2	P-005-229	CLAMP ANGLE		27.85
9	4	002-00U-G043	U-BOLT, .500-13 X 3.50 I.D. X 5.75 HT, 3.0 THD, GALV.		0.74
10	4	002-0AT-HA07	ROD, THREADED 1/2"-13 X 16" LG, GR B7., GALV.	16.00	0.73
11	20	002-0BG-0010	HHB, .500-13 X 1.50 LG., PT X 1.00, A325, HDG	1.50	0.14
12	36	002-0NG-0010	NUT, HEX, .500-13UNC, GR 2H, GALV		0.06
13	36	002-0LW-G002	WASHER, SPLIT LOCK, .500", GALV		0.01
14	38	002-0FW-G002	FW, .50, F436, HDG		0.02

SURFACE FINISH <input checked="" type="checkbox"/> UNLESS OTHERWISE SPECIFIED		UNLESS OTHERWISE SPECIFIED DIMENSIONS ARE IN INCHES		APPROVALS	DATE	 ELECTRO MECHANICAL INDUSTRIES, INC. 11230 NEESESHAW DRIVE HOUSTON, TEXAS 77065 1-800-453-0050
MATERIAL	SEE PARTS LIST	TOLERANCES		DRAWN	11/12/2021	
THIRD ANGLE PROJECTION		.0	±.06	CHECKER	11/12/2021	TITLE: <b>ROOFTOP SLED FRAME, 7 FT FACE, (2) 3.5" O.D. X 96 IN. PIPES</b>
		.000	±.005	ENGINEER	11/12/2021	
		FRACTIONS	1/16	PRODUCTION	11/12/2021	SIZE
		ANGLES	±.25°	J. LEE		DRAWING NO.
NEXT ASSY	USED ON	HOLES:				1000-0010-0321
		DRILLED OR PUNCHED	+1/32			REV
		BURNED	±1/32			0
APPLICATIONS						SCALE: 1:40
						WEIGHT: 561.49 lbs.
						SHEET 1 OF 2

