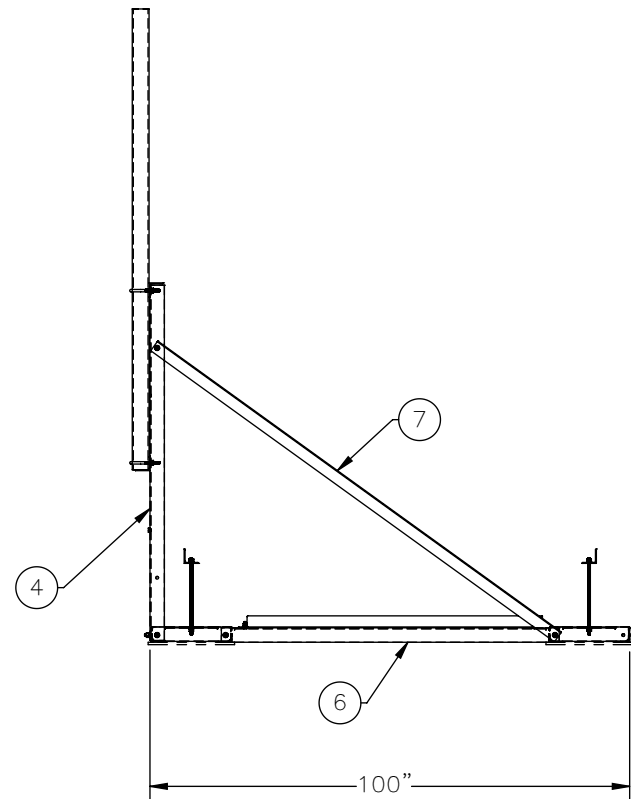
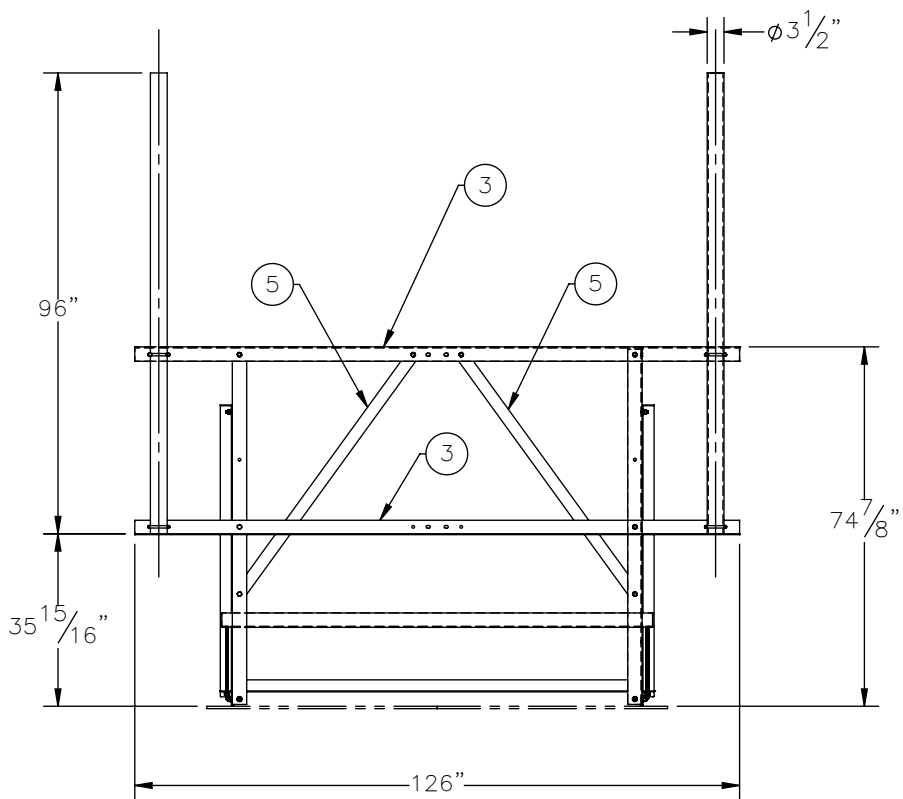
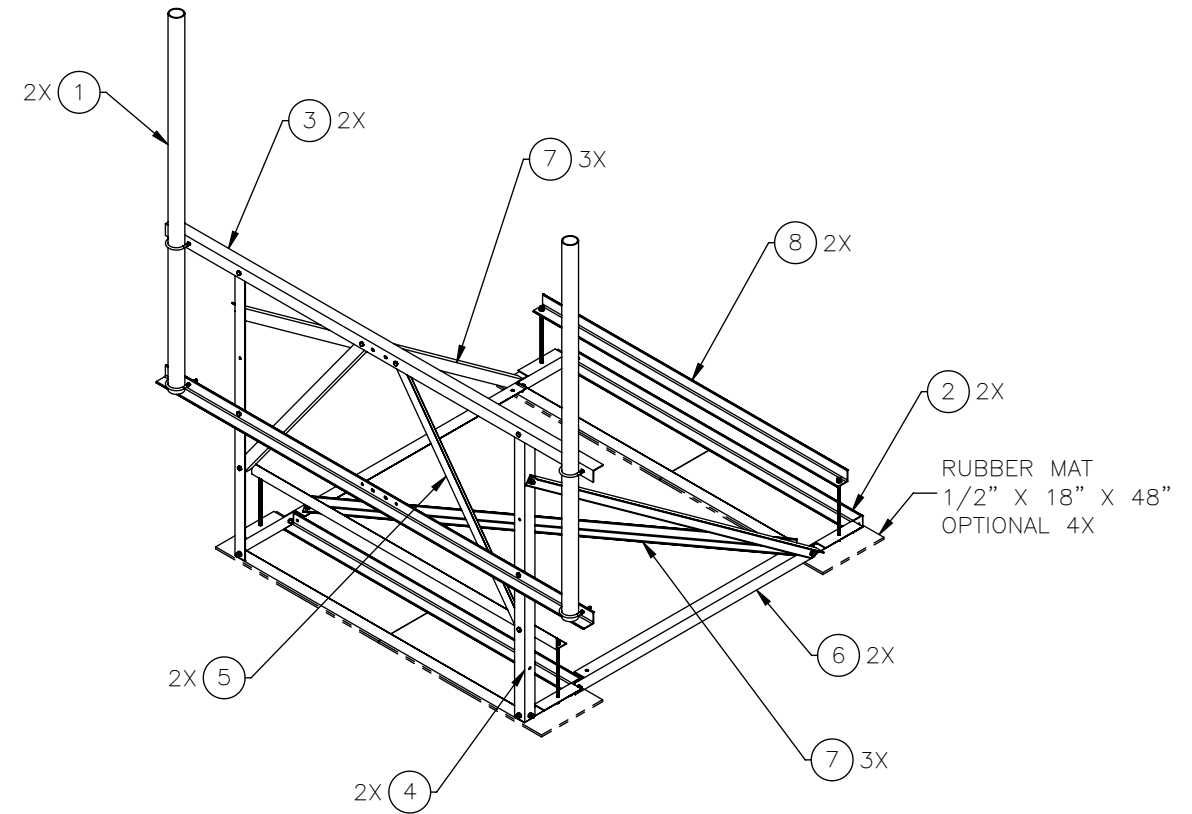
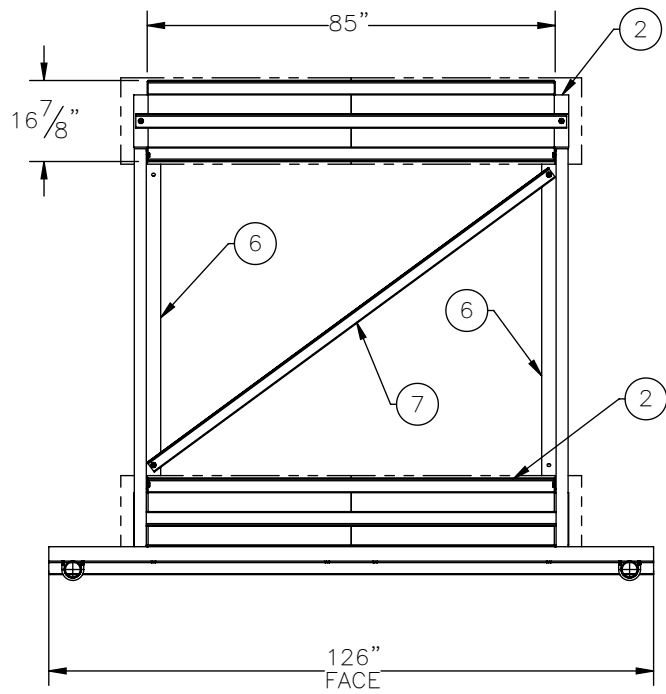

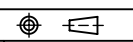
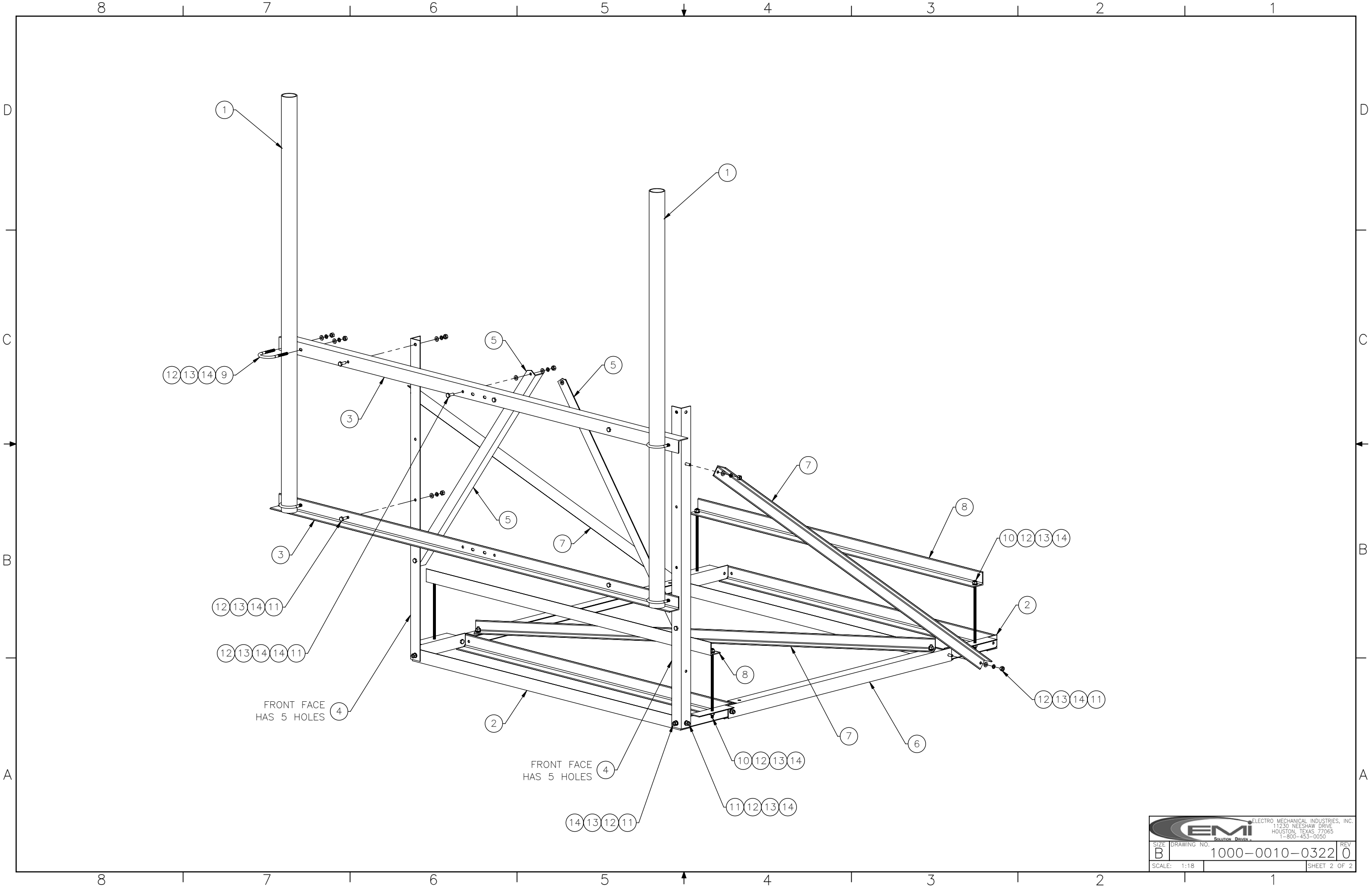


THE INFORMATION CONTAINED IN THIS DRAWING IS THE SOLE PROPERTY OF ELECTRO MECHANICAL INDUSTRIES, INC. ANY REPRODUCTION IN PART OR WHOLE WITHOUT THE WRITTEN PERMISSION OF ELECTRO MECHANICAL IND., IS PROHIBITED.



ITEM NO.	QTY REQD	PART NUMBER	DESCRIPTION	LENGTH	WEIGHT
1	2	1000-0010-0322_1	PIPE, 3.00 INCH, SCH. 40, ASTM A500 GR. B STL., PP1-0300-S40M	96"	60.66
2	2	W-002-231	ROOF MOUNT BASE WELDMENT		60.94
3	2	P-005-224	FRONT FACE HORIZONTAL ANGLE		38.96
4	2	P-005-225	FRONT FACE VERTICAL ANGLE		22.85
5	2	P-005-226	FRONT FACE DIAGONAL ANGLE		15.95
6	2	P-005-227	SIDE FACE HORIZONTAL ANGLE		20.96
7	3	P-005-228	DIAGONAL BRACE ANGLE		26.28
8	2	P-005-229	CLAMP ANGLE		27.85
9	4	002-00U-G043	U-BOLT, .500-13 X 3.50 I.D. X 5.75 HT, 3.0 THD, GALV.		0.74
10	4	002-0AT-HA07	ROD, THREADED 1/2"-13 X 16" LG, GR B7., GALV.	16.00	0.73
11	20	002-0BG-0010	HHB, .500-13 X 1.50 LG., PT X 1.00, A325, HDG	1.50	0.14
12	36	002-0NG-0010	NUT, HEX, .500-13UNC, GR 2H, GALV		0.06
13	36	002-0LW-G002	WASHER, SPLIT LOCK, .500", GALV		0.01
14	38	002-0FW-G002	FW, .50, F436, HDG		0.02

SURFACE FINISH <input checked="" type="checkbox"/> UNLESS OTHERWISE SPECIFIED		UNLESS OTHERWISE SPECIFIED DIMENSIONS ARE IN INCHES		APPROVALS		DATE		 ELECTRO MECHANICAL INDUSTRIES, INC. 11230 NEESEHAW DRIVE HOUSTON, TEXAS 77065 1-800-453-0050	
MATERIAL SEE PARTS LIST		TOLERANCES .0 ±.06 .00 ±.015 .000 ±.005 FRACTIONS ± 1/16 ANGLES ± .25° HOLES: DRILLED OR PUNCHED ± 1/32 BURNED ± 1/32		DRAWN C. SANCHEZ		11/11/2021			
THIRD ANGLE PROJECTION 				CHECKER B. HUTSON		11/12/2021		SIZE B	
NEXT ASSY		USED ON		ENGINEER J. BREEN		11/15/2021		DRAWING NO. 1000-0010-0322	
APPLICATIONS				PRODUCTION J. LEE		11/15/2021		REV 0	
								SCALE: 1:40 WEIGHT: 587.59 lbs. SHEET 1 OF 2	



		ELECTRO MECHANICAL INDUSTRIES, INC. 11230 NEESHAW DRIVE HOUSTON, TEXAS 77065 1-800-453-0050	
SIZE B	DRAWING NO. 1000-0010-0322	REV 0	SHEET 2 OF 2
SCALE: 1:18			