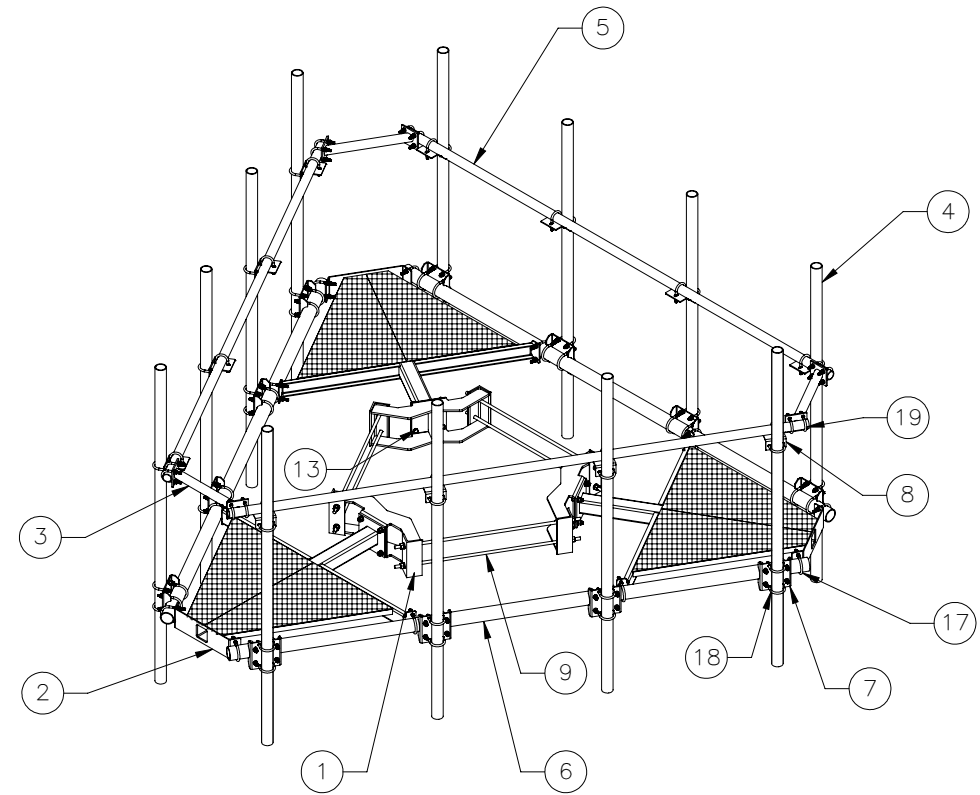
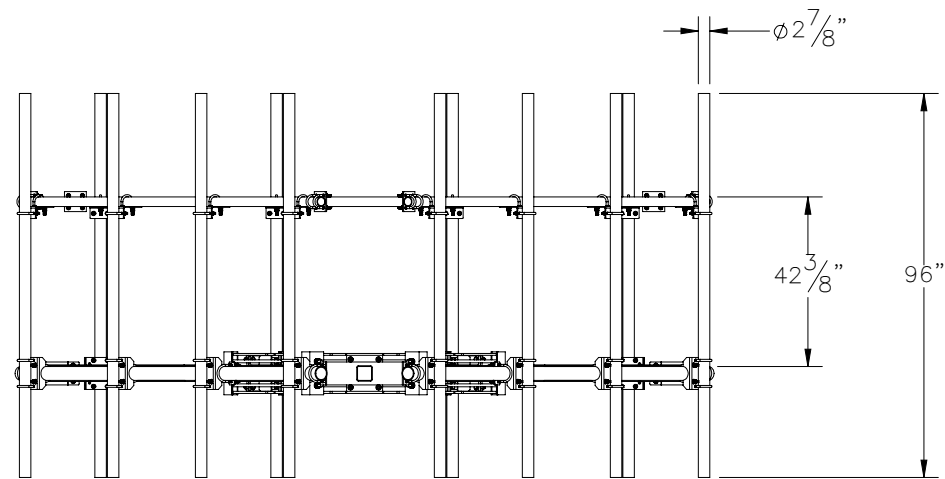
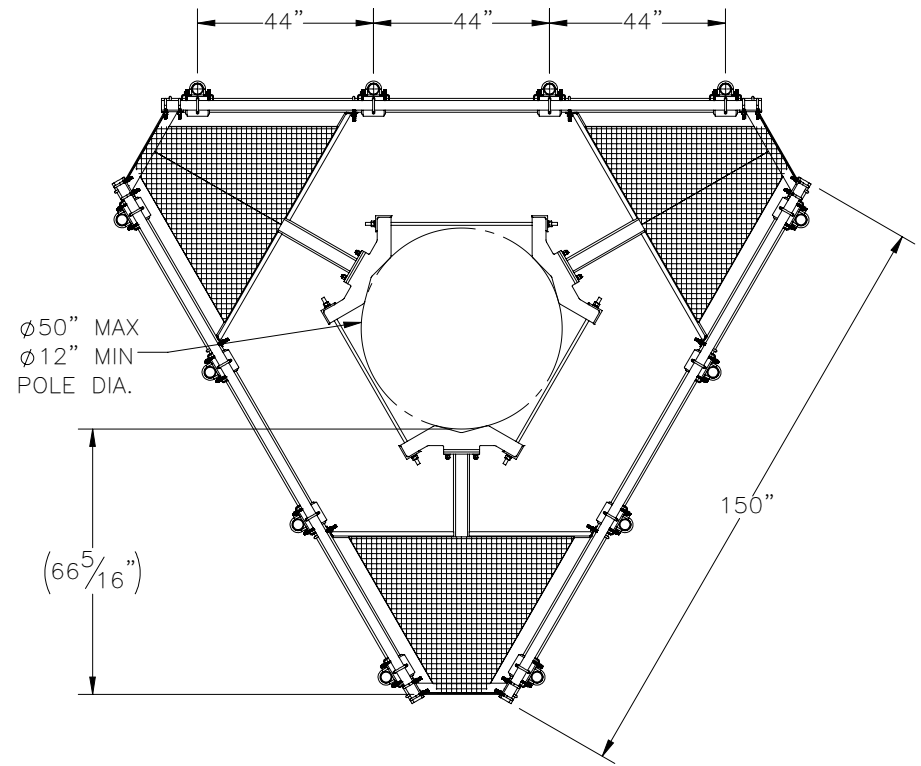

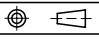


THE INFORMATION CONTAINED IN THIS DRAWING IS THE SOLE PROPERTY OF ELECTRO MECHANICAL INDUSTRIES, INC. ANY REPRODUCTION IN PART OR WHOLE WITHOUT THE WRITTEN PERMISSION OF ELECTRO MECHANICAL IND., IS PROHIBITED.



ITEM NO.	QTY REQD	PART NUMBER	DESCRIPTION	LENGTH	WEIGHT
1	3	W-002-232	RING MOUNT WELDMENT		69.07
2	3	W-002-455	PLATFORM ARM WELDMENT		142.14
3	3	W-002-456	CORNER HANDRAIL		11.73
4	12	P-006-253	SUPPORT PIPE, 2.875" O.D.	96"	46.39
5	3	P-006-323	SUPPORT PIPE, 2.375" O.D.	150"	45.70
6	3	P-006-324	SUPPORT PIPE, 3.50" O.D.	150"	94.79
7	12	P-005-068	PIPE MOUNT CROSSOVER PLATE		5.75
8	12	P-005-069	PIPE STANDOFF BRACKET		2.85
9	6	002-0AT-G014	AT, .750-10 X 48.0, GALV, GR B7	48"	6.03
10	12	002-0FW-G003	FW, .75 F436, HDG		0.04
11	12	002-0LW-G003	WASHER, SPLIT LOCK, .75, GALV		0.05
12	12	002-0NG-0002	NUT, HX, .75-10UNC, GR 2H, GALV		0.19
13	12	002-0BG-0273	BOLT, HX HD, .625-11UNC X 2.25 LG, ASTM A325, GALV		0.04
14	12	002-0FW-G004	WASHER, FLAT, .625", ASTM F436, GALV		0.03
15	12	002-0LW-G004	WASHER, SPLIT LOCK, .625 INCH, GALV		0.03
16	12	002-0NG-0026	NUT, HX, ANCO LOCKNUT, .625-11UNC, GR 2H, GALV		0.116
17	36	002-00U-G043	U-BOLT, .500-13 X 3.50 I.D. X 5.75 HT, 3.0 THD, GALV.		0.74
18	36	002-00U-G044	U-BOLT, .500-13 X 3.0 I.D. X 4.5 HT, 1.63 THD, GALV.		0.63
19	24	002-00U-G045	U-BOLT, .500-13 X 2.44 I.D. X 4.63 HT, 2.5 THD, GALV		0.62
20	192	002-0FW-G002	FW, .50, F436, HDG		0.02
21	192	002-0LW-G002	WASHER, SPLIT LOCK, .500", GALV		0.01
22	192	002-0NG-0010	NUT, HEX, .500-13UNC, GR 2H, GALV		0.06

SURFACE FINISH <input checked="" type="checkbox"/> UNLESS OTHERWISE SPECIFIED		UNLESS OTHERWISE SPECIFIED DIMENSIONS ARE IN INCHES		APPROVALS		DATE		 ELECTRO MECHANICAL INDUSTRIES, INC. 11230 NEESESHAW DRIVE HOUSTON, TEXAS 77065 1-800-453-0050	
MATERIAL SEE PARTS LIST		TOLERANCES		DRAWN C. SANCHEZ		9/2/2022			
THIRD ANGLE PROJECTION 		.0 ±.06 .00 ±.015 .000 ±.005		CHECKER J. Breen		9/2/2022		TITLE: 12.5' SNUB NOSE MONOPOLE TOWER MOUNT PLATFORM	
NEXT ASSY USED ON		FRACTIONS ± 1/16 ANGLES ± .25°		ENGINEER J. Breen		9/2/2022			
APPLICATIONS		HOLES: DRILLED OR PUNCHED ± 1/32 BURNED ± 1/32		PRODUCTION J. LEE		9/9/2022		SIZE B DRAWING NO. 1000-0010-0344 REV 0	
				SCALE: 1:48		WEIGHT: 1875.56 lbs.		SHEET 1 OF 2	

