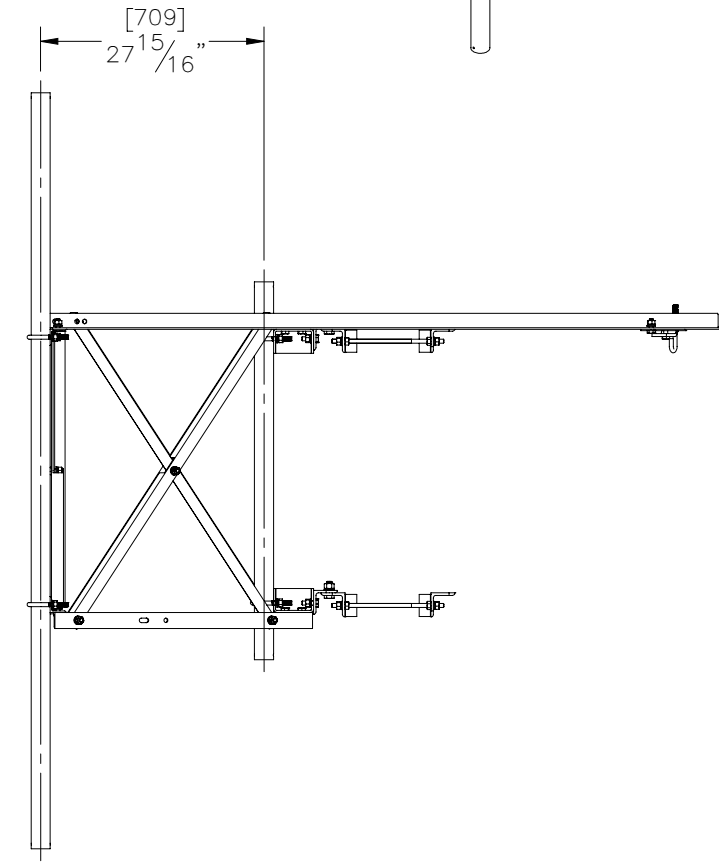
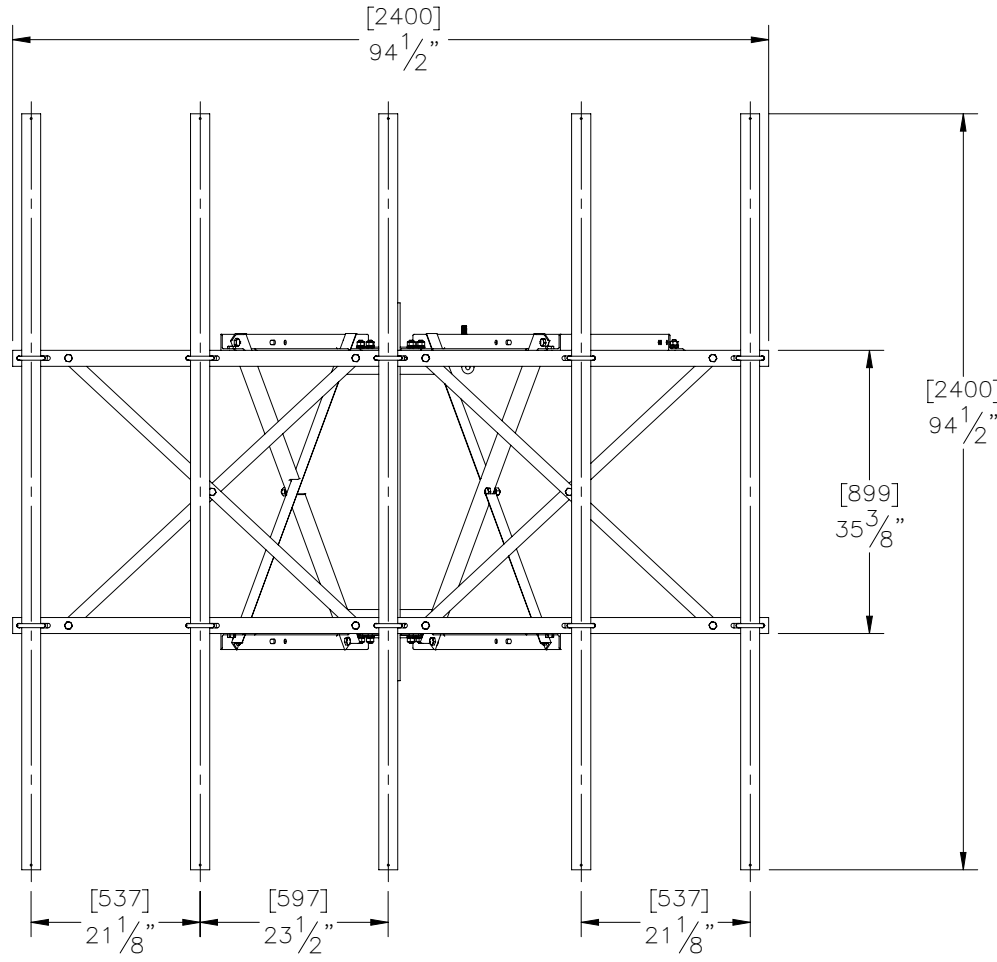
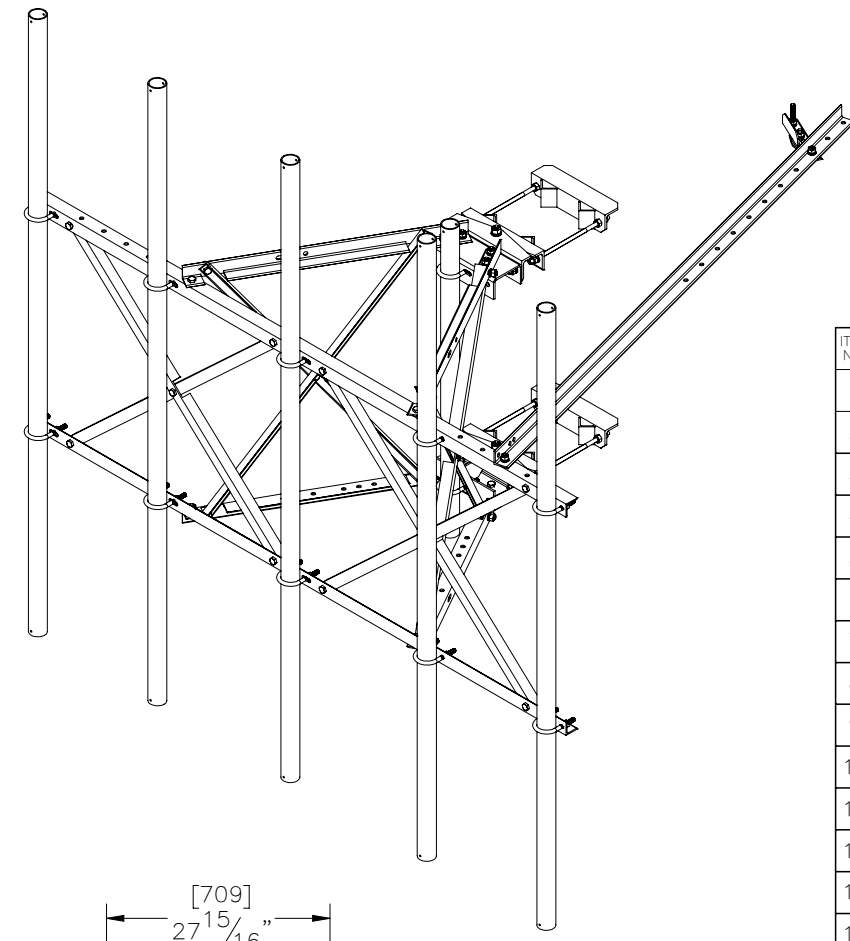
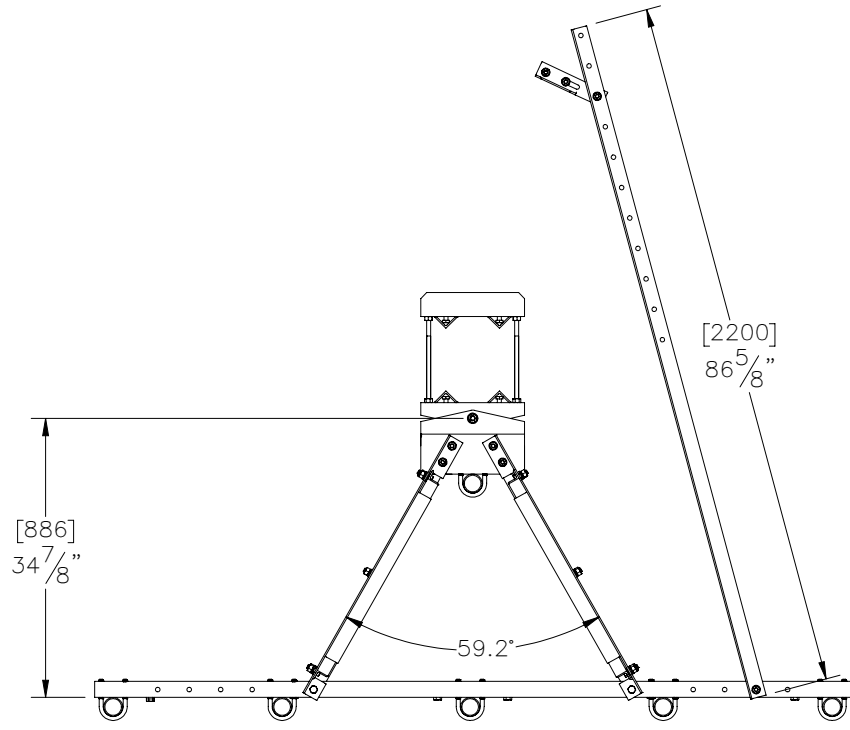

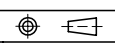


THE INFORMATION CONTAINED IN THIS DRAWING IS THE SOLE PROPERTY OF ELECTRO MECHANICAL INDUSTRIES, INC. ANY REPRODUCTION IN PART OR WHOLE WITHOUT THE WRITTEN PERMISSION OF ELECTRO MECHANICAL IND., IS PROHIBITED.



ITEM NO.	QTY REQD	PART NUMBER	DESCRIPTION	LENGTH	WEIGHT
1	2	W-002-513	CHANNEL WELDMNT, SECTOR FRAME (XAT-1)		9.94
2	4	P-006-430	ANGLE, SECTOR FRAME (XAT-2)	13"	
3	2	P-006-431	ANGLE, SECTOR FRAME (XAT-3)	13"	
4	1	P-006-432	ANGLE, SECTOR FRAME (XAT-11)	37"	
5	1	P-006-433	ANGLE, SECTOR FRAME (XAT-11A)	37.0079	
6	1	P-006-434	ANGLE, SECTOR FRAME (XAT-12)	37"	
7	1	P-006-435	ANGLE, SECTOR FRAME (XAT-12A)	37"	
8	2	P-006-436	ANGLE, SECTOR FRAME (XAT-13)	48 7/32"	
9	2	P-006-437	ANGLE, SECTOR FRAME (XAT-14)	48.2283	
10	1	P-006-438	ANGLE, SECTOR FRAME (XAT-15)	94 1/2"	
11	1	P-006-439	ANGLE, SECTOR FRAME (XAT-16)	94 1/2"	
12	2	P-006-440	ANGLE, SECTOR FRAME (XAT-17)	50 5/8"	
13	2	P-006-441	ANGLE, SECTOR FRAME (XAT-18)	50 5/8"	
14	1	P-006-442	PIPE, SECTOR FRAME (XAT-19)	47 1/4"	14.39
15	5	P-006-443	PIPE, SECTOR FRAME (XAT-20)	94 1/2"	28.79
16	1	P-006-444	ANGLE, SECTOR FRAME (XAT-22)	86.6142	
17	1	P-006-445	ANGLE, SECTOR FRAME (XAT-23)	9 1/16"	
18	1	P-006-446	FORMED PLATE, SECTOR FRAME	3 5/16"	0.66
19	8	W-002-490	WEDGE WELDMNT		0.71
20	1	002-0JB-G001	J-BOLT, .500-13 X 5.5" LG, 3.5" MIN. THRD LG, GR 5, GALV		0.41
21	88	002-0FW-G002	FW, .50, F436, HDG		0.02
22	88	002-0NG-0010	NUT, HEX, .500-13UNC, GR 2H, GALV		0.06
23	12	002-0OU-G045	U-BOLT, .500-13 X 2.44 I.D. X 4.63 HT, 2.5 THD, GALV		0.62
24	80	002-0LW-G002	WASHER, SPLIT LOCK, .500", GALV		0.01
25	34	002-0BG-0010	HHB, .500-13 X 1.50 LG., PT X 1.00, A325, HDG	1.50	0.14
26	4	002-0BG-0012	HHB, .500-13 X 1.75 LG., PT X 1.00, A325, HDG	1.75	0.16
27	1	002-0BG-0302	HHB, .500-13 X 2.00 LG., FT, A325, HDG	2.00	0.2
28	2	002-0BG-0033	BOLT, HX HD, .625-11UNC X 1.75" LG, ASTM A325, GALV		0.03
29	2	002-0FW-G004	WASHER, FLAT, .625", ASTM F436, GALV		0.03
30	2	002-0LW-G004	WASHER, SPLIT LOCK, .625 INCH, GALV		0.03
31	2	002-0NG-0026	NUT, HX, ANCO LOCKNUT, .625-11UNC, GR 2H, GALV		0.116
32	4	002-0AT-HA14	ROD, THREADED, .500-13UNC X 14.00 LG, ASTM A193 B7, GALV.		0.780
33	4	002-0AT-HA15	ROD, THREADED, .500-13UNC X 10.00 LG, ASTM A193 B7, GALV.		0.556

SURFACE FINISH <input checked="" type="checkbox"/> UNLESS OTHERWISE SPECIFIED		UNLESS OTHERWISE SPECIFIED DIMENSIONS ARE IN INCHES		APPROVALS		DATE		 ELECTRO MECHANICAL INDUSTRIES, INC. 1230 NEESEHAW DRIVE HOUSTON, TEXAS 77065 1-800-453-0050	
MATERIAL SEE PARTS LIST		TOLERANCES .0 ± .06 .00 ± .015 .000 ± .005		DRAWN J. ROACH		10/28/2022		TITLE: SECTOR FRAME MOUNT, 5 PIPE	
THIRD ANGLE PROJECTION 		FRACTIONS ± 1/16 ANGLES ± .25°		CHECKER C. SANCHEZ		10/28/2022		ENGINEER J. Breen	
NEXT ASSY		HOLES: DRILLED OR PUNCHED ± 1/32 BURNED ± 1/32		PRODUCTION J. KERNER		11/2/2022		SIZE B	
APPLICATIONS								DRAWING NO. 1000-0010-0358	
								REV 0	
								SCALE: 1:24 WEIGHT: 386.52 lbs. SHEET 1 OF 2	

