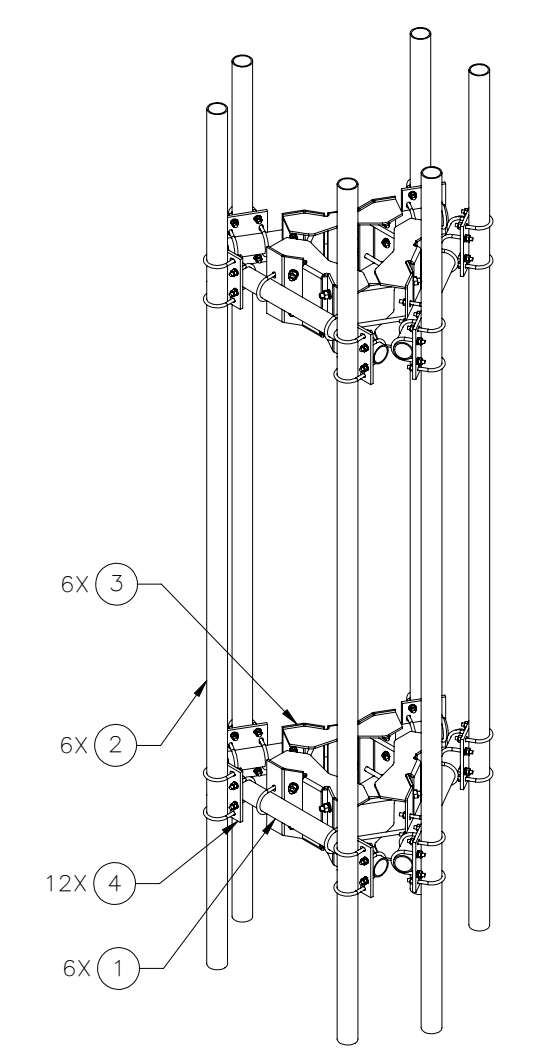
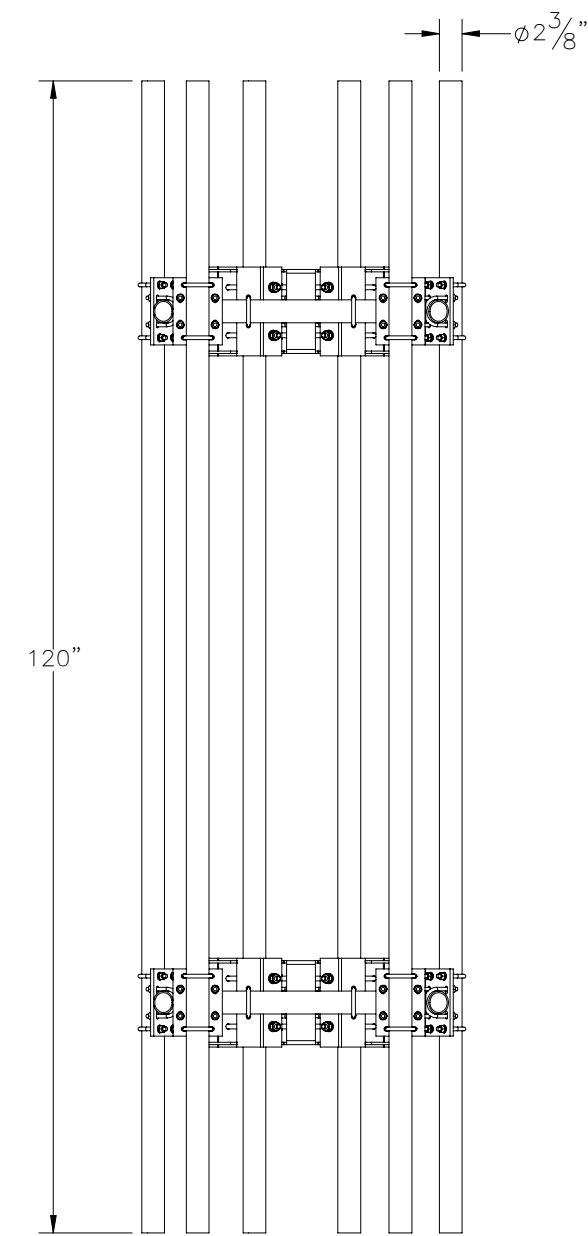
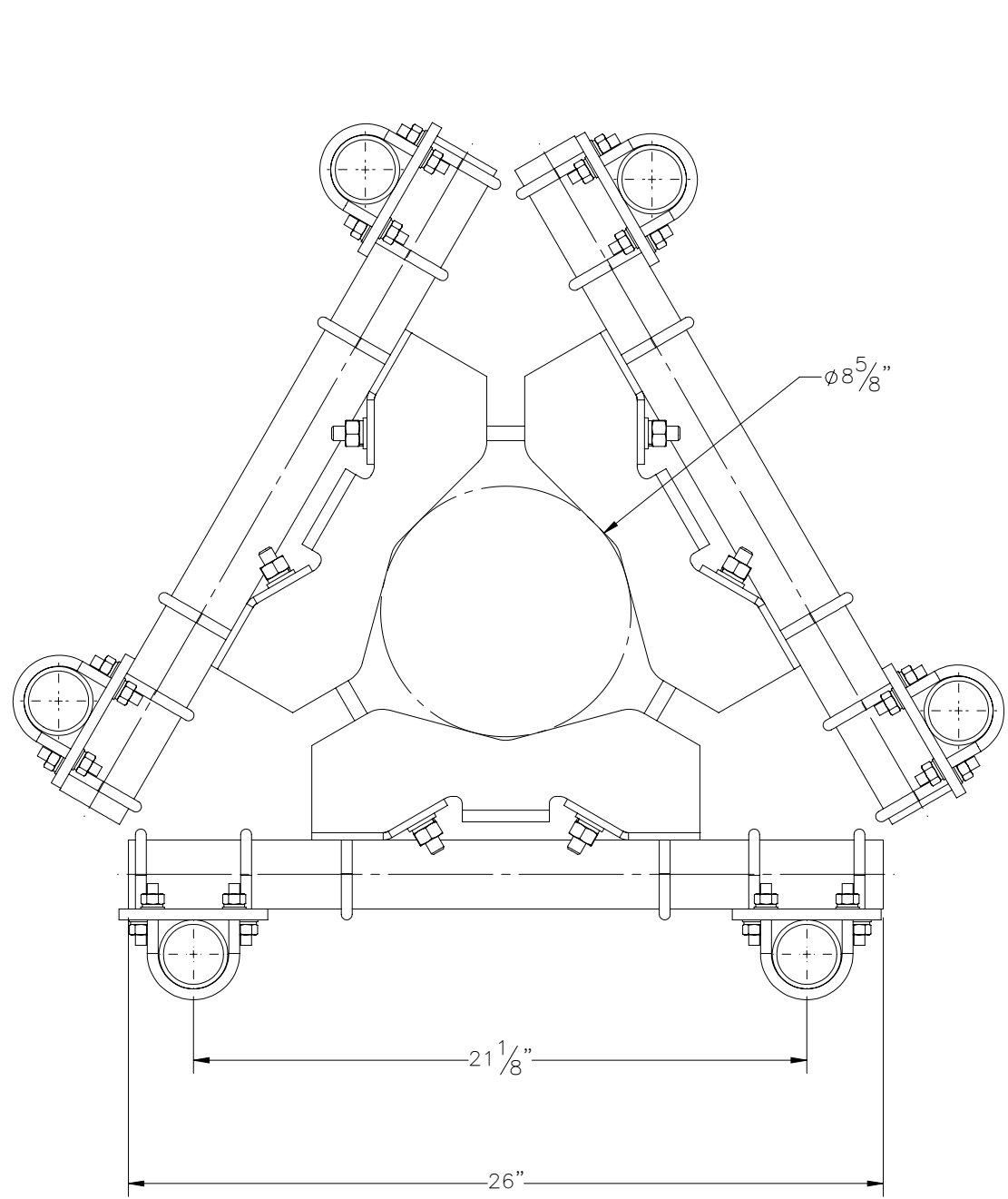

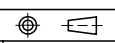


THE INFORMATION CONTAINED IN THIS DRAWING IS THE SOLE PROPERTY OF ELECTRO MECHANICAL INDUSTRIES, INC. ANY REPRODUCTION IN PART OR WHOLE WITHOUT THE WRITTEN PERMISSION OF ELECTRO MECHANICAL IND., IS PROHIBITED.

REVISIONS					
REV.	DCN #	DESCRIPTION	DATE	BY	APPROVED
1	01280	002-0UG-0010 WAS 002-00U-G047 002-0FW-G036 WAS 002-0FW-G005	12/7/2023	FJB	JPB



ITEM NO.	QTY REQD	PART NUMBER	DESCRIPTION	LENGTH	WEIGHT
1	6	1000-0010-0362_1	PIPE, 2.00 INCH, SCH. 40, ASTM A500 GR. B STL., PP1-0200-S40M	26"	7.92
2	6	1000-0010-0362_2	PIPE, 2.00 INCH, SCH. 40, ASTM A500 GR. B STL., PP1-0200-S40M	120"	36.56
3	6	W-002-395	RING MOUNT WELDMENT		14.32
4	12	P-006-077	CROSSOVER PLATE	7"	3.55
5	60	002-0UG-0010	U-BOLT, .375-16 X 2.438 ID X 3.625 H X 1.75 TL, GALV	3 5/8"	0.29
6	120	002-0FW-G036	WASHER, FLAT, .375, GALV, SAE		0.01
7	120	002-0LW-G005	WASHER, SPLIT LOCK, .375, GALV		0.01
8	120	002-0NG-0003	NUT, HEX, .375-16, GALV, GR 2H		0.030
9	12	002-0AT-HA12	AT, .500-13 X 12.0, GALV, GR B7	12"	0.67
10	24	002-0FW-G002	WASHER, FLAT, .500, GALV, F436		0.03
11	24	002-0LW-G002	WASHER, SPLIT LOCK, .500, GALV		0.014
12	24	002-0NG-0010	NUT, HEX, .500-13, GALV, GR 2H		0.06

SURFACE FINISH <input checked="" type="checkbox"/> UNLESS OTHERWISE SPECIFIED		UNLESS OTHERWISE SPECIFIED DIMENSIONS ARE IN INCHES		APPROVALS		DATE		 ELECTRO MECHANICAL INDUSTRIES, INC. 11230 NEESESHAW DRIVE HOUSTON, TEXAS 77065 1-800-453-0050	
MATERIAL SEE PARTS LIST		TOLERANCES .0 ± .06 .00 ± .015 .000 ± .005 FRACTIONS ± 1/16 ANGLES ± .25° HOLES: DRILLED OR PUNCHED ± 1/32 BURNED ± 1/32		DRAWN J. ROACH 6/30/2022		6/30/2022		TITLE: 2 MOUNT TRI-SECTOR FRAME, 8" POLE, 26" FACE	
THIRD ANGLE PROJECTION 				CHECKER C. SANCHEZ 6/30/2022				SIZE B DRAWING NO. 1000-0010-0362 REV 1	
NEXT ASSY USED ON APPLICATIONS				ENGINEER J. Breen 7/5/2022				SCALE: 1:6 WEIGHT: 428.68 lbs. SHEET 1 OF 2	
				PRODUCTION J. LEE 7/5/2022					

