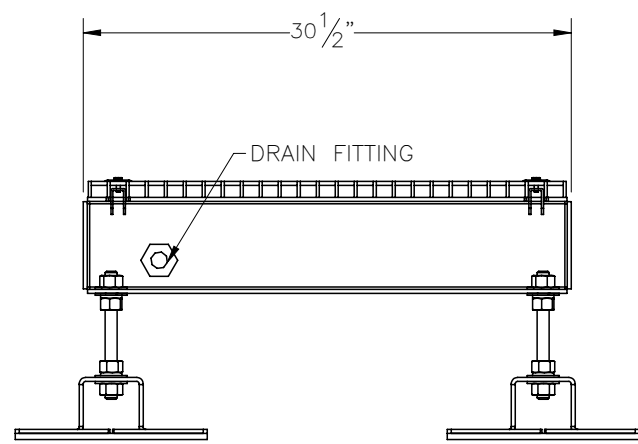
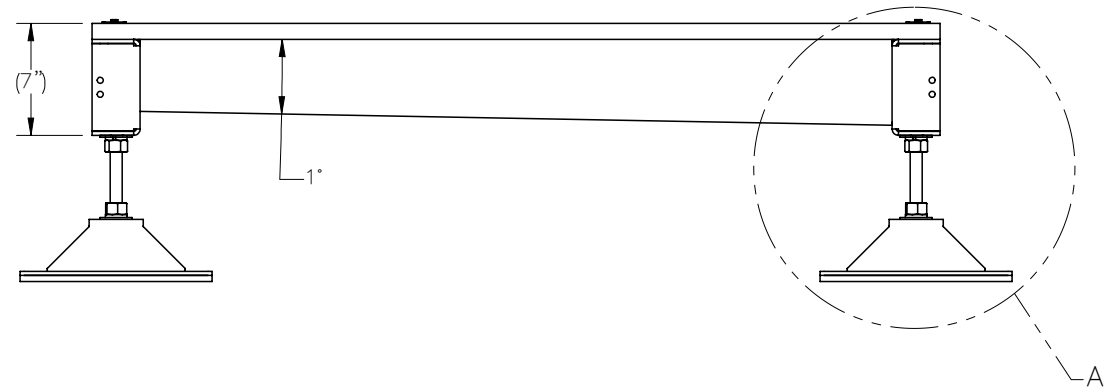
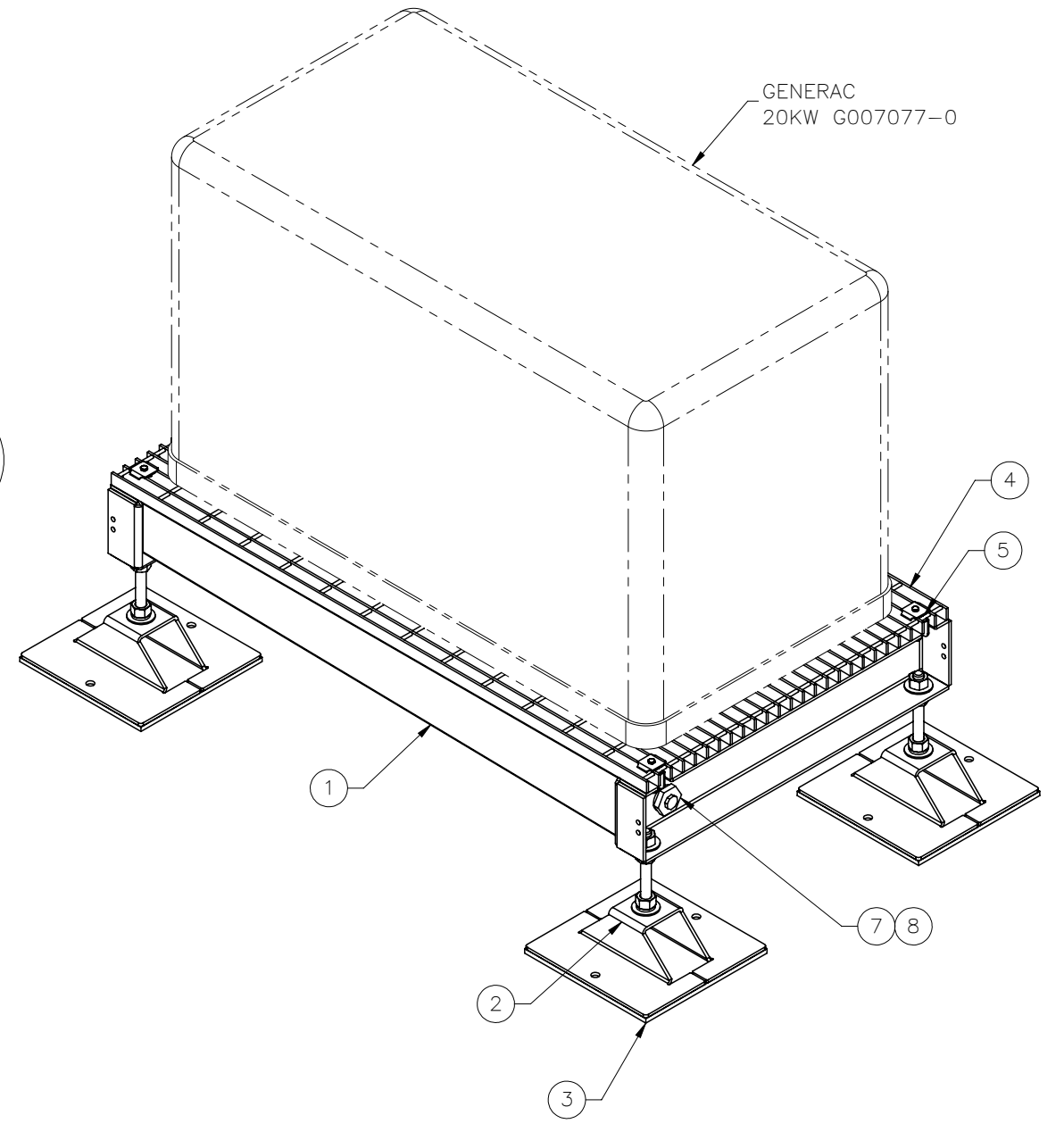
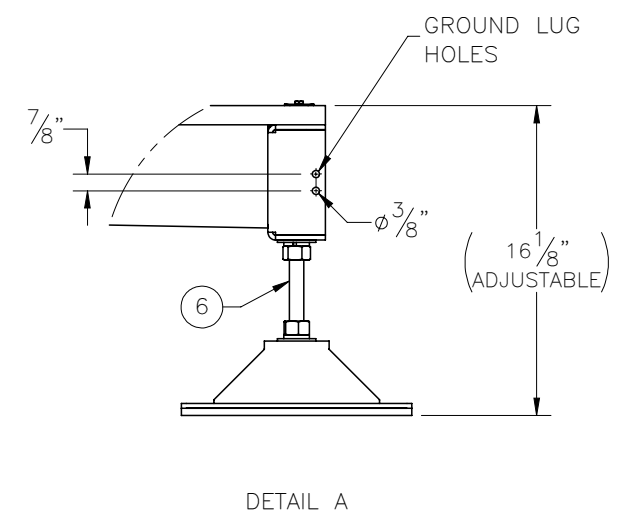
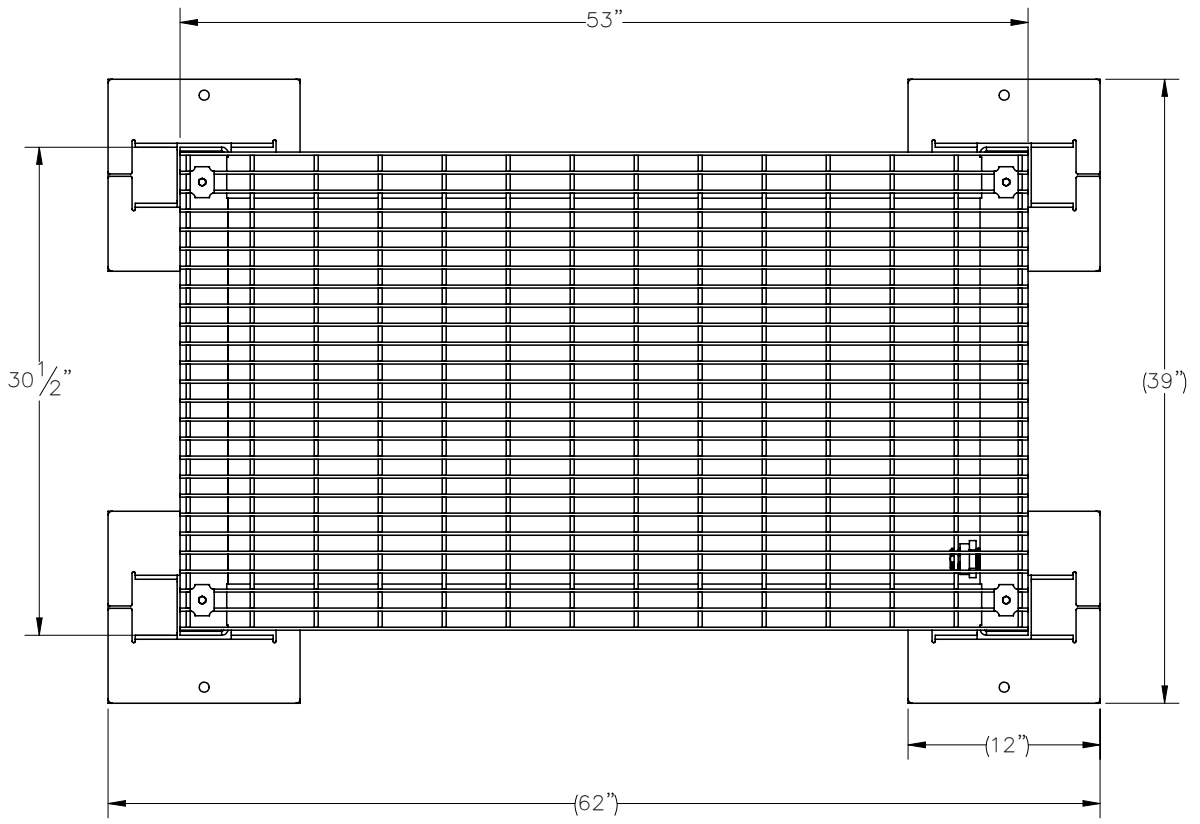

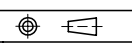


THE INFORMATION CONTAINED IN THIS DRAWING IS THE SOLE PROPERTY OF ELECTRO MECHANICAL INDUSTRIES, INC. ANY REPRODUCTION IN PART OR WHOLE WITHOUT THE WRITTEN PERMISSION OF ELECTRO MECHANICAL IND., IS PROHIBITED.



| ITEM NO. | QTY REQD | PART NUMBER | DESCRIPTION | LENGTH | WEIGHT |
|----------|----------|----------------|---|--------|--------|
| 1 | 1 | W-002-430 | GEN PLATFORM WELDMENT | | 113.68 |
| 2 | 4 | P-004-724 | PLATFORM FOOT, FORMED | | 11.14 |
| 3 | 4 | P-006-250 | NEOPRENE RUBBER PAD | | 2.52 |
| 4 | 1 | T010-0297-0530 | GRATING PANEL, 1" SMOOTH, 26 BAR, 29.875 WIDTH | 53" | 77.65 |
| 5 | 4 | 000-MSG-0008 | GRATING CLIP, 1", GALV. | | 0.20 |
| 6 | 4 | 1000-0020-0082 | SINGLE MOUNT LEVELING HARDWARE KIT, .75" x 8" | | 2.20 |
| 7 | 1 | 175-TWF-0002 | THROUGH WALL PIPE FITTING, .50 IN. NPT FEMALE, MAX 1.06 WALL, PVC | | 0.24 |
| 8 | 1 | 175-OPL-0001 | PIPE PLUG, .50 IN. NPT MALE, SCH 80, PVC | | 0.02 |

| | | | | | | | | | |
|--|--|---|--|----------------------|--|---------------------|--|--|--|
| SURFACE FINISH <input checked="" type="checkbox"/> UNLESS OTHERWISE SPECIFIED | | UNLESS OTHERWISE SPECIFIED DIMENSIONS ARE IN INCHES | | APPROVALS | | DATE | |  ELECTRO MECHANICAL INDUSTRIES, INC. 11230 NEESESHAW DRIVE HOUSTON, TEXAS 77065 1-800-453-0050 | |
| MATERIAL SEE PARTS LIST | | TOLERANCES | | DRAWN J. ROACH | | 8/19/2022 | | TITLE: GEN PAN PLATFORM WITH GRAVITY FEET | |
| THIRD ANGLE PROJECTION  | | .0 ± .06 .00 ± .015 .000 ± .005 | | CHECKER C. SANCHEZ | | 8/19/2022 | | SIZE B | |
| NEXT ASSY | | FRACTIONS ± 1/16 | | ENGINEER J. Breen | | 8/19/2022 | | DRAWING NO. 1000-0010-0363 | |
| USED ON | | ANGLES ± .25° | | PRODUCTION J. KERNER | | 8/19/2022 | | REV 0 | |
| APPLICATIONS | | HOLES: DRILLED OR PUNCHED ± 1/32 | | SCALE: 1:12 | | WEIGHT: 255.84 lbs. | | SHEET 1 OF 1 | |
| | | BURNED ± 1/32 | | | | | | | |