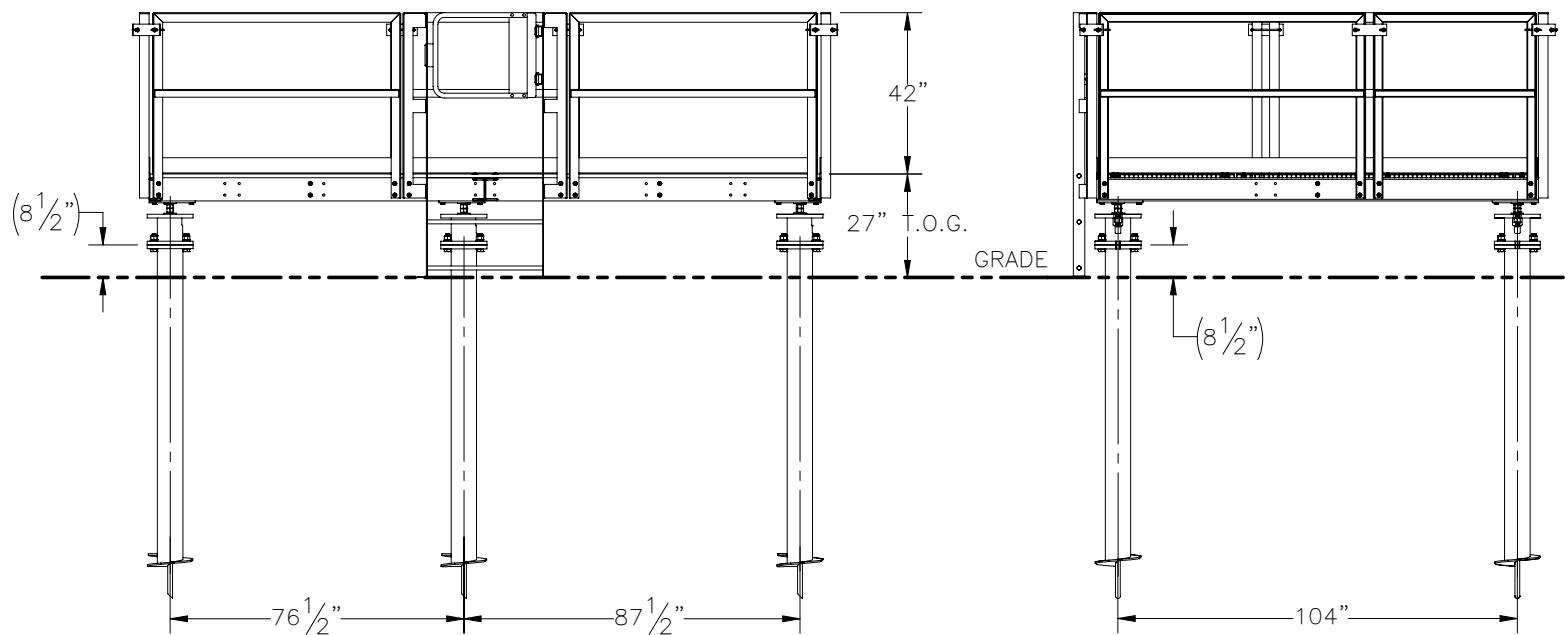
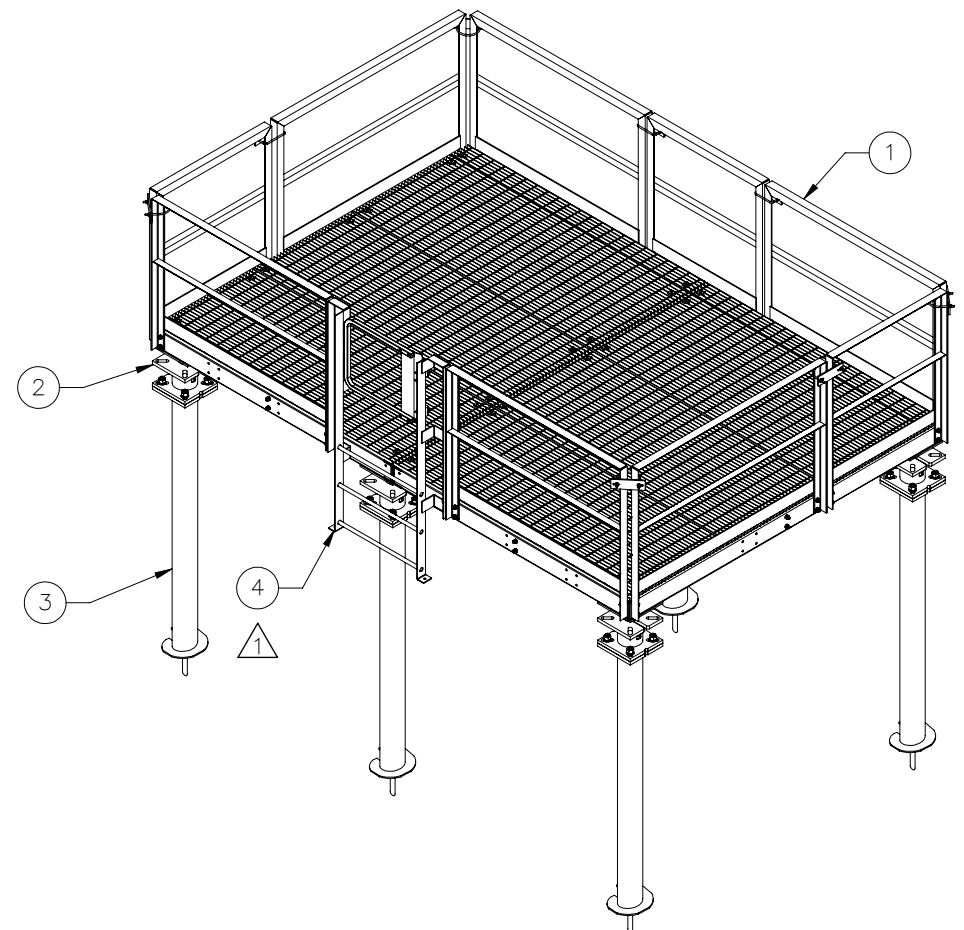
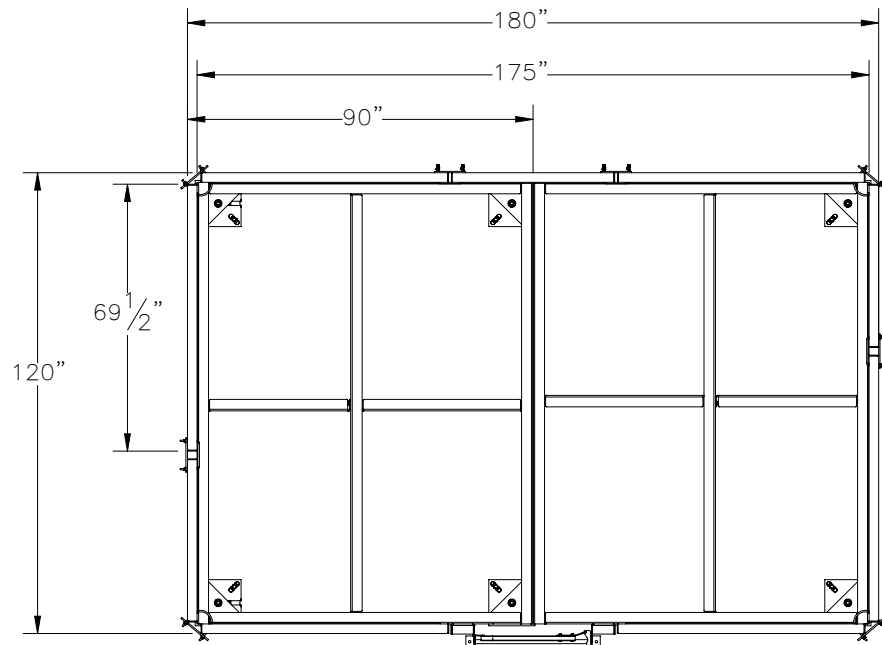


THE INFORMATION CONTAINED IN THIS DRAWING IS THE SOLE PROPERTY OF ELECTRO MECHANICAL INDUSTRIES, INC. ANY REPRODUCTION IN PART OR WHOLE WITHOUT THE WRITTEN PERMISSION OF ELECTRO MECHANICAL IND., IS PROHIBITED.

REVISIONS					
REV.	DCN #	DESCRIPTION	DATE	BY	APPROVED
1	01213	UPDATED WITH LOWER LEVEL CHANGES.	01/25/2023	JTR	JPB



ITEM NO.	QTY	PART NUMBER	DESCRIPTION	LENGTH	WEIGHT
1	1	1001-0020-0136	10' X 15' BOLT TOGETHER EQUIP. PLATFORM		2783.64
2	6	1007-TS06-0000	0.7 FT EXTENSION		86.00
3	6	400-000-1017	6" X 7', 1" HARDWARE- HELICAL PIER		173
4	1	1005-0360-0270	27" LADDER ASSEMBLY, 36" WIDE		99.9

SURFACE FINISH <input checked="" type="checkbox"/> UNLESS OTHERWISE SPECIFIED		UNLESS OTHERWISE SPECIFIED DIMENSIONS ARE IN INCHES		APPROVALS		DATE		ELECTRO MECHANICAL INDUSTRIES, INC. 11230 NEESEHAW DRIVE HOUSTON, TEXAS 77065 1-800-453-0050	
MATERIAL SEE PARTS LIST		TOLERANCES .0 ±.06 .00 ±.015 .000 ±.005 FRACTIONS ± 1/16 ANGLES ± .25° HOLES: DRILLED OR PUNCHED ± 1/32 BURNED ± 1/32		DRAWN J. ROACH		1/20/2023			
THIRD ANGLE PROJECTION		NEXT ASSY		CHECKER J. Breen		1/24/2023		SIZE B	
APPLICATIONS		USED ON		ENGINEER J. Breen		1/24/2023			
				PRODUCTION J. KERNER		1/24/2023		REV 1	
								SCALE: 1:50 WEIGHT: 4438.62 lbs. SHEET 1 OF 2	

