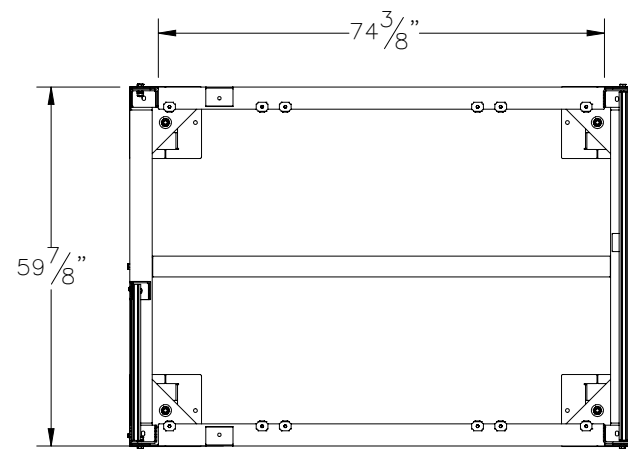
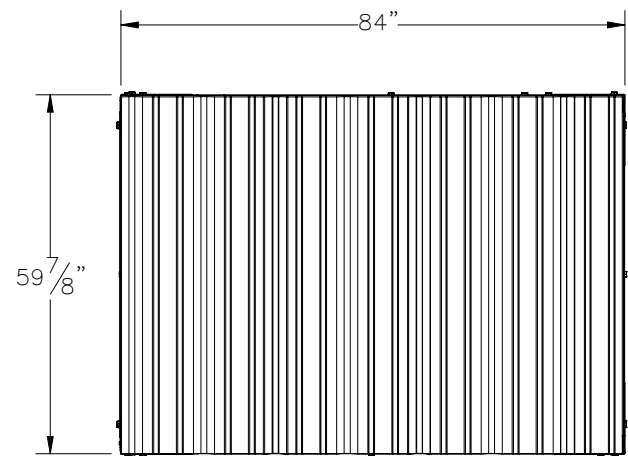
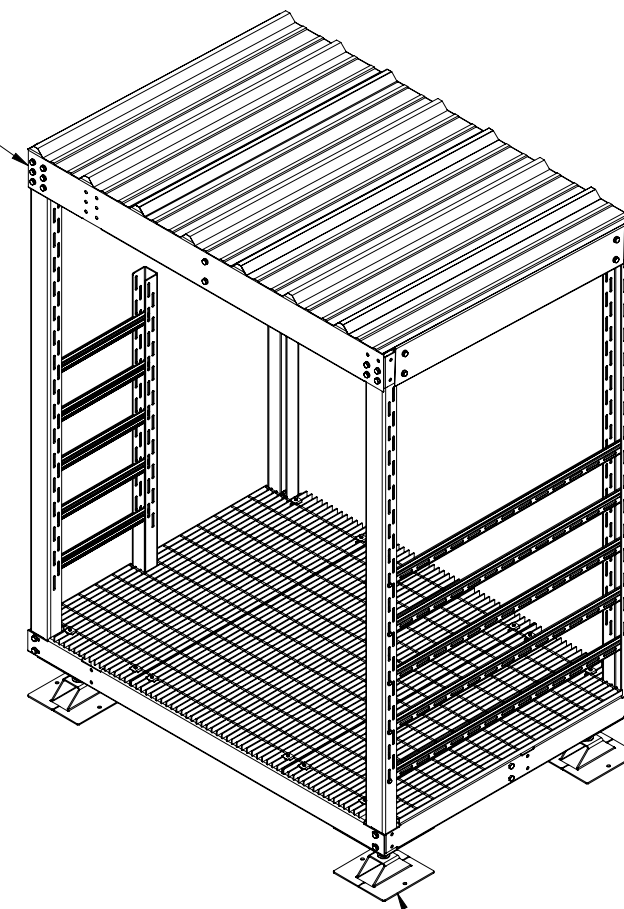


THE INFORMATION CONTAINED IN THIS DRAWING IS THE SOLE PROPERTY OF ELECTRO MECHANICAL INDUSTRIES, INC. ANY REPRODUCTION IN PART OR WHOLE WITHOUT THE WRITTEN PERMISSION OF ELECTRO MECHANICAL IND., IS PROHIBITED.

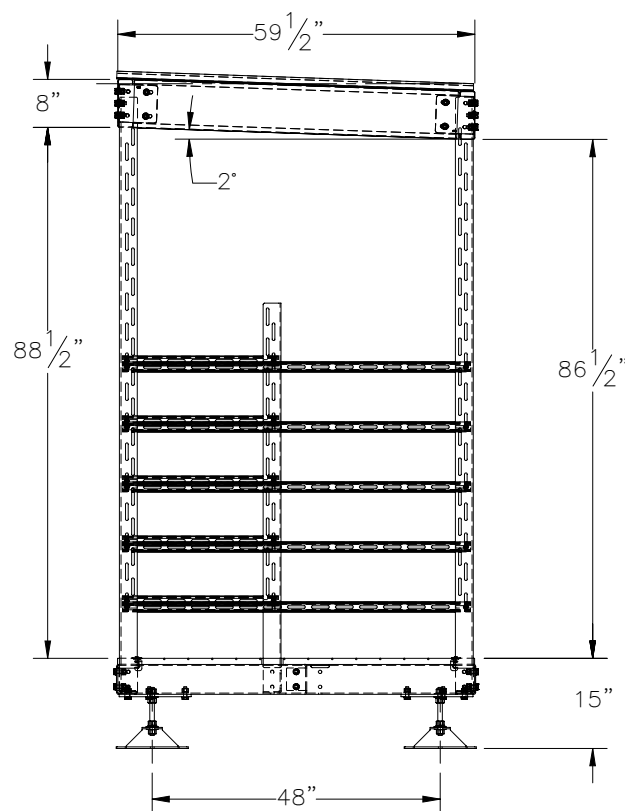
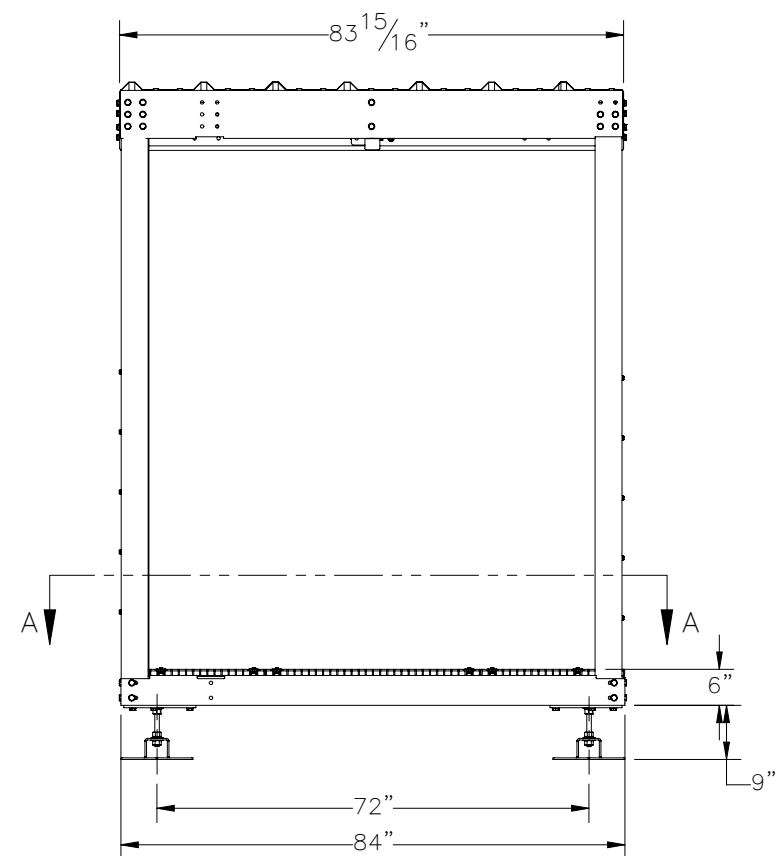


SECTION A-A
GRATING & CANOPY REMOVED
FOR CLARITY


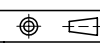
C PURLIN
8"X2 1/2"X16 GA
A653 G90 GR.55



FORMED FOOT
17 5/8" X 12" X 1/4"
A36



SALES DRAWING

SURFACE FINISH		UNLESS OTHERWISE SPECIFIED		UNLESS OTHERWISE SPECIFIED DIMENSIONS ARE IN INCHES		APPROVALS		DATE	
MATERIAL	GALVANIZED STEEL	TOLERANCES	.0	± .06	DRAWN	B. HUTSON	7/12/2023	 ELECTRO MECHANICAL INDUSTRIES, INC. 11230 NEESESHAW DRIVE HOUSTON, TEXAS 77065 1-800-453-0050	
THIRD ANGLE PROJECTION			.00	± .015	CHECKER	B. HUTSON	7/12/2023		
			.000	± .005	ENGINEER	B. HUTSON	7/12/2023		
			FRACTIONS	± 1/16	PRODUCTION	B. HUTSON	7/12/2023		
			ANGLES	± .25°					
NEXT ASSY	USED ON	HOLES:	DRILLED OR PUNCHED	+1/32			TITLE: 5' X 7' EQUIPMENT PLATFORM, CANOPY, (2) H-FRAME, GRAVITY FEET SIZE B DRAWING NO. 1000-0010-0476 SCALE: 1:32 WEIGHT: 1044.08 lbs. SHEET 1 OF 1		
APPLICATIONS		BURNED		±1/32					