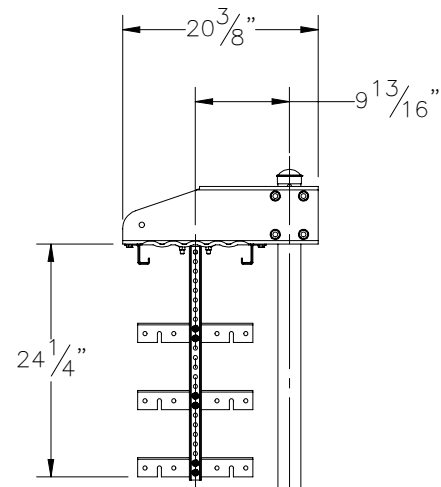
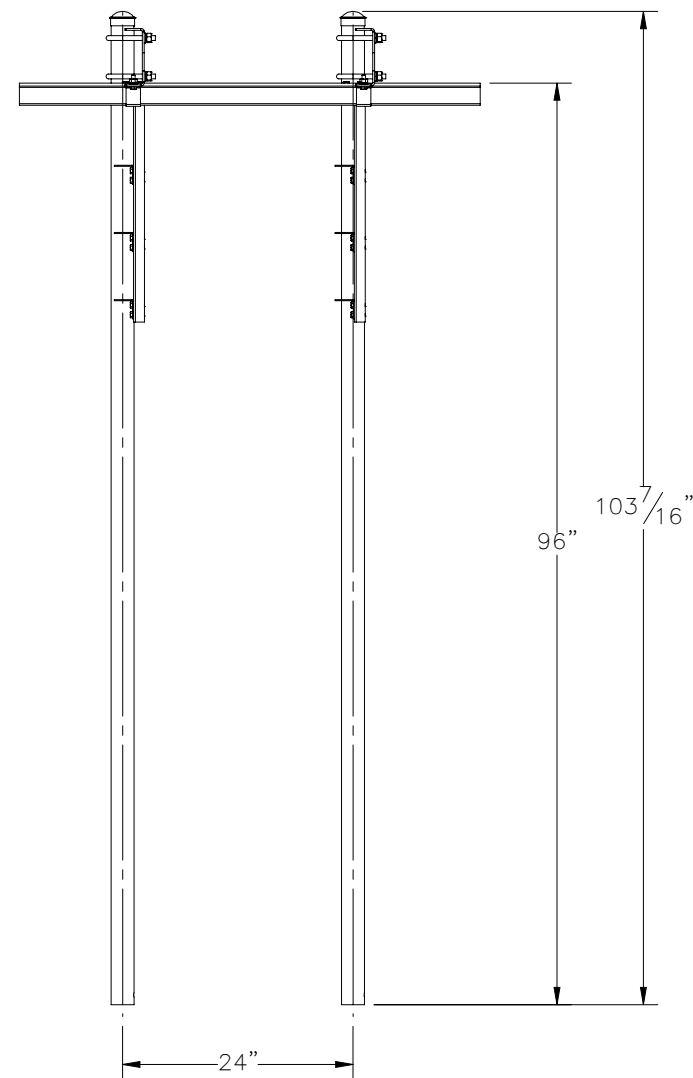
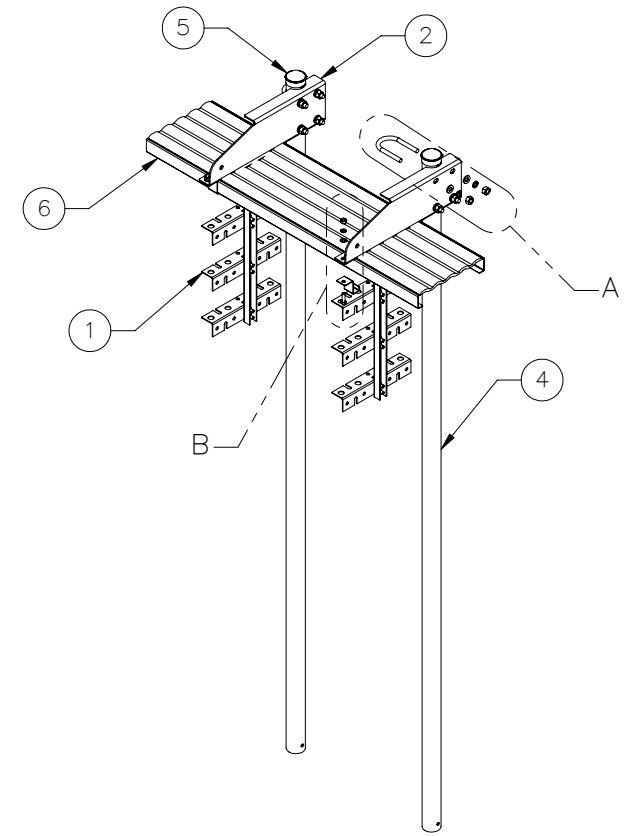
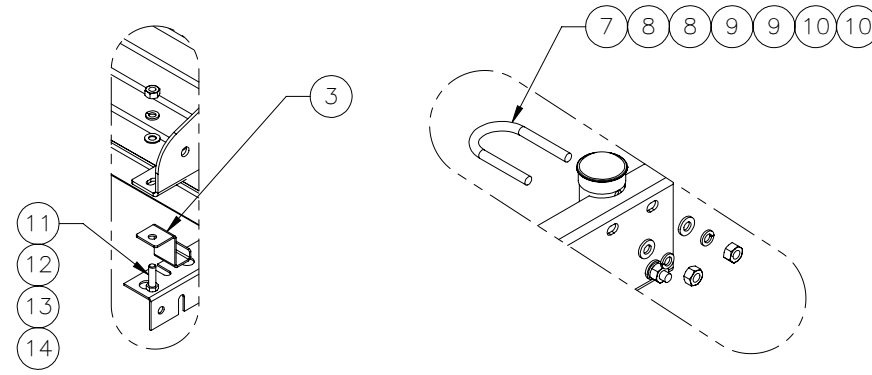
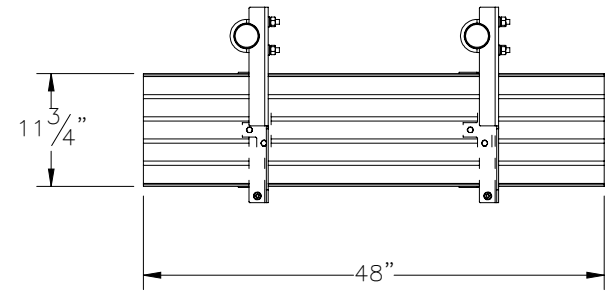

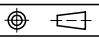


THE INFORMATION CONTAINED IN THIS DRAWING IS THE SOLE PROPERTY OF ELECTRO MECHANICAL INDUSTRIES, INC. ANY REPRODUCTION IN PART OR WHOLE WITHOUT THE WRITTEN PERMISSION OF ELECTRO MECHANICAL IND., IS PROHIBITED.



ITEM NO.	QTY REQD	PART NUMBER	DESCRIPTION	LENGTH	WEIGHT
1	2	A-000-517	TRAPEZE KIT - 12" WD, 12 RUN		6.96
2	2	P-006-916	BRIDGE SUPPORT BRACKET	20 3/8"	8.44
3	4	P-006-917	SUPPORT BRACKET	3 1/8"	0.22
4	2	P-006-936	SUPPORT PIPE, 2.375" O.D.	102 11/16"	31.28
5	2	002-0PC-0001	CAP, POST, 2.375 D, GALV		0.20
6	1	002-0PG-0001	GRIP STRUT, SERRATED, 11.75" X 2" X 4", 12 GA, GALV STL		60.62
7	4	002-00U-G045	U-BOLT, .500-13 X 2.438 ID X 4.625 H X 2.50 TL, GALV	4 5/8"	0.638
8	8	002-0FW-G002	WASHER, FLAT, .500, GALV, F436		0.03
9	8	002-0LW-G002	WASHER, SPLIT LOCK, .500, GALV		0.014
10	8	002-0NG-0010	NUT, HEX, .500-13, GALV, GR 2H		0.06
11	4	002-0BG-0013	BOLT, HH, .375-16 X 1.25, GALV, GR 5, FT	1 1/4"	0.0571
12	4	002-0FW-G036	WASHER, FLAT, .375, GALV, SAE		0.01
13	4	002-0LW-G005	WASHER, SPLIT LOCK, .375, GALV		0.01
14	4	002-0NG-0003	NUT, HEX, .375-16, GALV, GR 2H		0.030

SURFACE FINISH <input checked="" type="checkbox"/> UNLESS OTHERWISE SPECIFIED		UNLESS OTHERWISE SPECIFIED DIMENSIONS ARE IN INCHES		APPROVALS	DATE	 ELECTRO MECHANICAL INDUSTRIES, INC. 11230 NEESESHAW DRIVE HOUSTON, TEXAS 77065 1-800-453-0050
MATERIAL	SEE PARTS LIST	TOLERANCES		DRAWN	9/13/2023	
THIRD ANGLE PROJECTION		.0	± .06	CHECKER	9/13/2023	TITLE:
		.00	± .015	ENGINEER	9/13/2023	ICE BRIDGE KIT - DIRECT BURIAL
		.000	± .005	PRODUCTION	9/13/2023	SIZE
NEXT ASSY	USED ON	FRACTIONS	± 1/16	J. KERNER		DRAWING NO.
		ANGLES	± .25°			1000-0010-0477
		HOLES:				REV
APPLICATIONS		DRILLED OR PUNCHED	+1/32			0
		BURNED	±1/32			SCALE: 1:20
						WEIGHT: 159.02 lbs.
						SHEET 1 OF 1