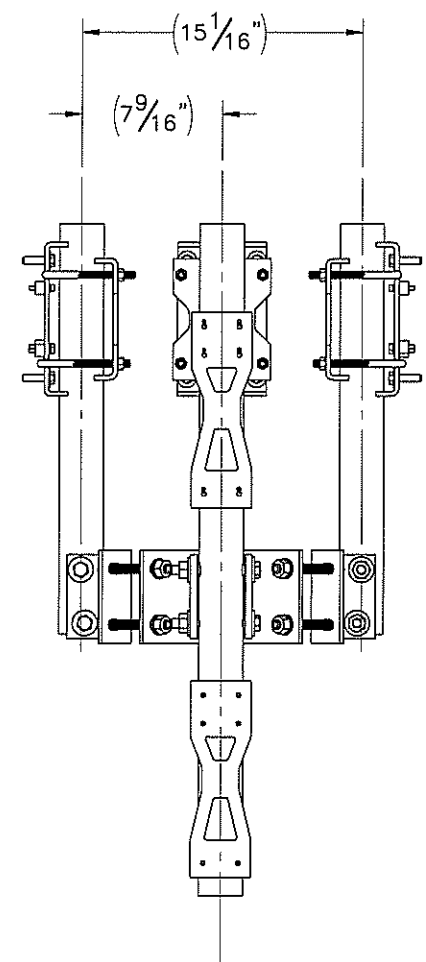
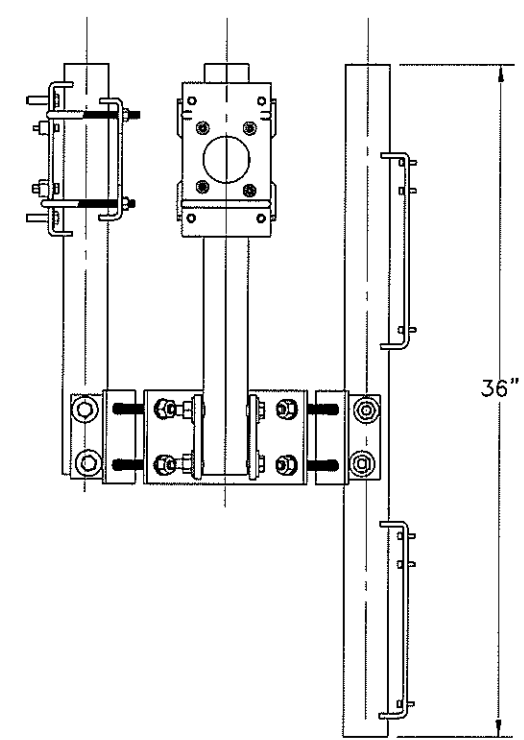
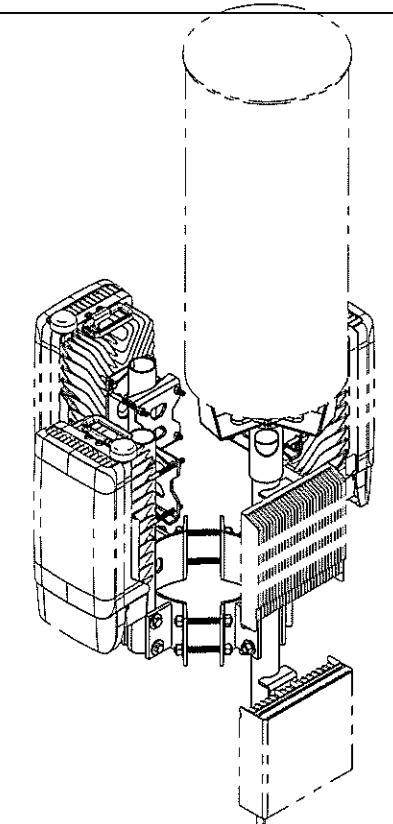
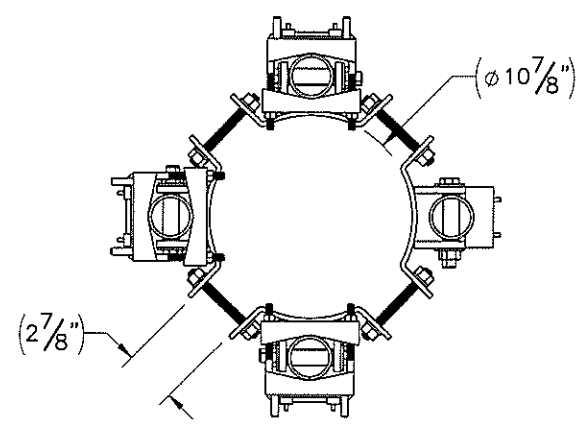


THE INFORMATION CONTAINED IN THIS DRAWING IS THE SOLE PROPERTY OF ELECTRO MECHANICAL INDUSTRIES, INC. ANY REPRODUCTION IN PART OR WHOLE WITHOUT THE WRITTEN PERMISSION OF ELECTRO MECHANICAL IND., IS PROHIBITED.

REVISIONS					
REV.	DCN #	DESCRIPTION	DATE	BY	APPROVED
1	DCN00511	UPDATED ASSEMBLY, WELDMENTS, PARTS AND HARDWARE	9.19.18	PCG	

D
C
B
A



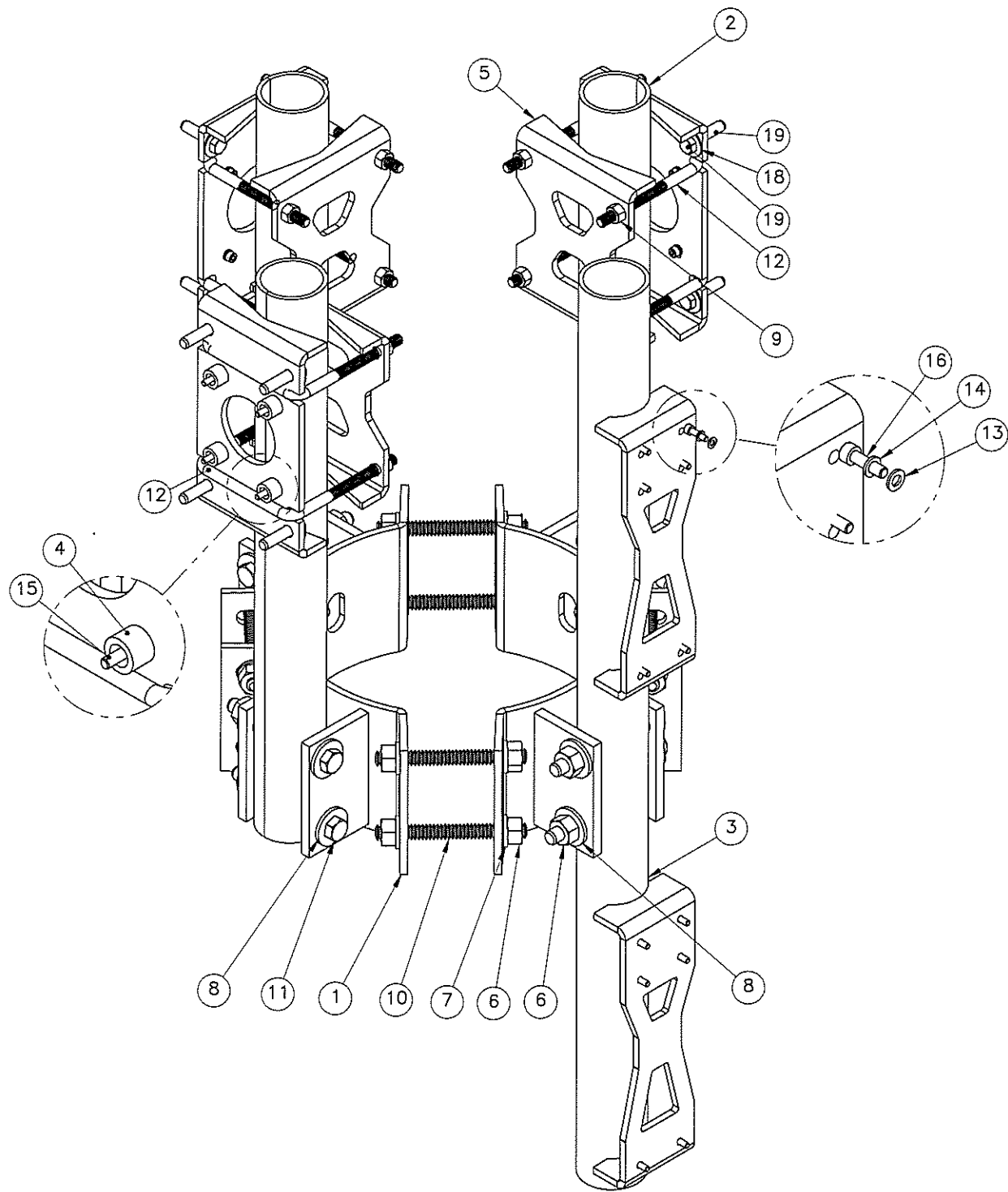
ITEM NO.	QTY REQD	PART NUMBER	DESCRIPTION	WEIGHT
1	4	W-001-003	POLE CLAMP WELDMENT	6
2	3	W-001-031	CPE POLE MOUNT	6.7
3	1	W-001-032	LONG CPE POLE MOUNT	15.4
4	12	P-002-451	PIPE, 3/8 SCH. 80 X 1/2"	0.004
5	3	P-002-454	CLAMP BRACKET, 8 5/8" X 6" X 1/4"	2
6	24	002-ONG-0001	NUT, HEX, .500-13UNC, GR 2H, GALV	0.06
7	16	002-OFW-G002	WASHER, FLAT, .500", F436, GALV	0.02
8	16	002-OFW-G020	WASHER, FLAT, .500", USS, GALV	0.04
9	12	002-ONG-0012	NUT, HEX, .375-16UNC, GR 5, GALV	0.02
10	8	002-OAT-HA01	ROD, THREADED, .500-13UNC X 6.00 LG, ASTM A193 B7, GALV.	0.205
11	8	002-OBG-0011	BOLT, .500-13UNC X 4.5" LG, ASTM A325, GALV.	0.29
12	6	002-00U-Z008	SQ U-BOLT, .375"-16 X 4.625", 4" I.D., ZINC PLATED, MCM 3060T48	0.389
13	24	002-OFW-Z021	M5 FLAT WASHER, DIN 125, ZINC PLATED	0.00
14	24	002-OLW-Z020	M5 SPLIT LOCK WASHER, DIN 127 ZINC PLATED	0.00
15	12	002-OSZ0019	BOLT, M5-.8x30LG ZINC PLATED	0.01
16	12	002-OSZ-0020	BOLT, M5-.8x18LG ZINC PLATED	0.01
17	3	P-002-493	ANTENNA BRACKET PLATE	2.7369
18	12	002-OFW-Z007	WASHER, FLAT, .38 INCH, ZINC PLD, STL	0.00
19	12	002-OBZ-0024	BOLT, HX HD, .375-16UNC X 1.5 LG, GR 5, ZINC	0.01

SURFACE FINISH <input checked="" type="checkbox"/> UNLESS OTHERWISE SPECIFIED		UNLESS OTHERWISE SPECIFIED DIMENSIONS ARE IN INCHES		APPROVALS		DATE		ELECTRO MECHANICAL INDUSTRIES, INC. 11230 NEEHAW DRIVE HOUSTON, TEXAS 77065 1-800-453-0050	
MATERIAL SEE PARTS LIST		TOLERANCES		DRAWN P. GUTIERREZ		8.28.18			
THIRD ANGLE PROJECTION		.0 ± .06 .00 ± .01 .000 ± .005		CHECKED J. BUSHMAN		8.29.18		TITLE: CPE EQUIPMENT MOUNT	
NEXT ASSY		FRACTIONS = 1/16		ENGINEER/DESIGNER J. BUSHMAN		8.29.18			
USED ON		ANGLES = 25°		PRODUCTION J. SUNDERLAND		8.29.18		SIZE B DRAWING NO. 1000-0020-0018 REV 1	
APPLICATIONS		HOLES: DRILLED OR PUNCHED +1/32 BURNED -1/32		SCALE: 1:10		WEIGHT: 84 lbs.			


8 7 6 5 4 3 2 1

8 7 6 5 4 3 2 1

D
C
B
A



8 7 6 5 4 3 2 1

		ELECTRO MECHANICAL INDUSTRIES, INC. 14220 NEEDHAM DRIVE HOUSTON, TEXAS 77045 1-800-453-0010	
SIZE	DRAWING NO.	REV	
B	1000-0020-0018	1	
SCALE	1:10	SHEET 2 OF 2	