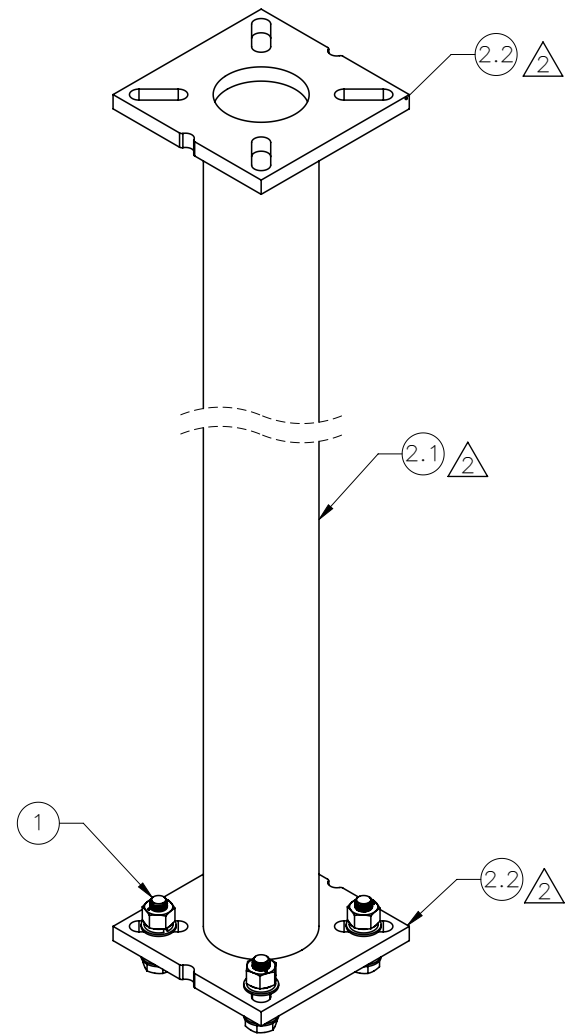
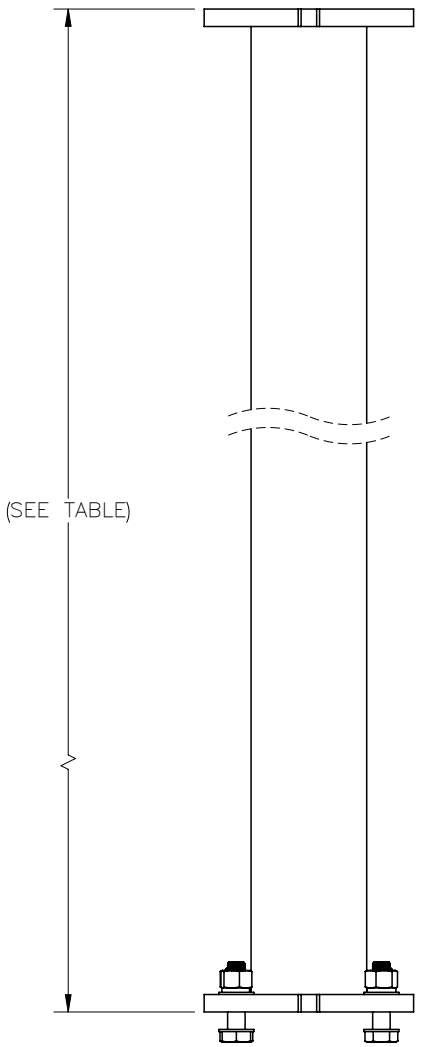

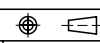


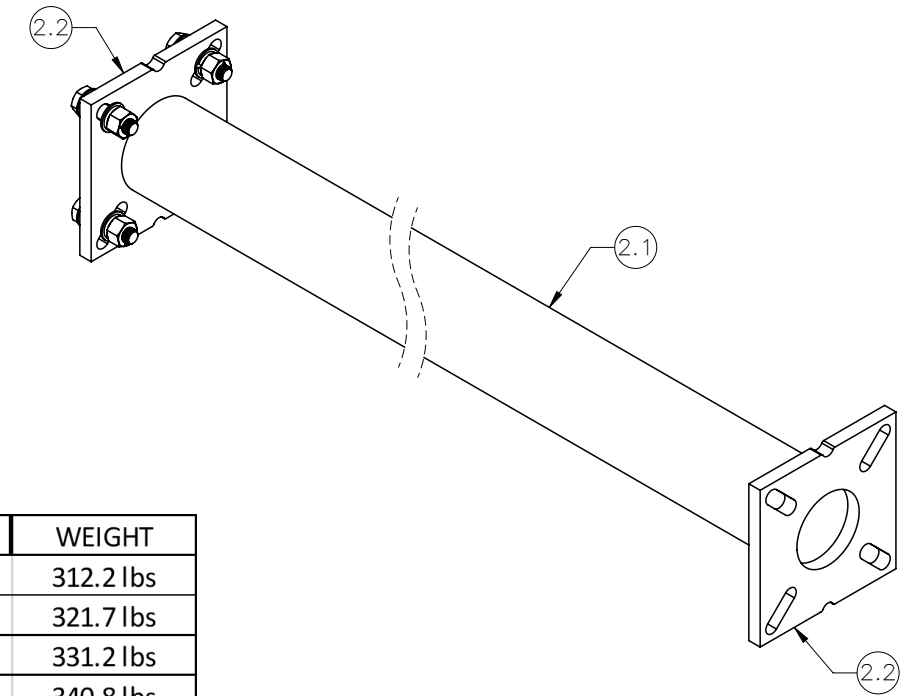
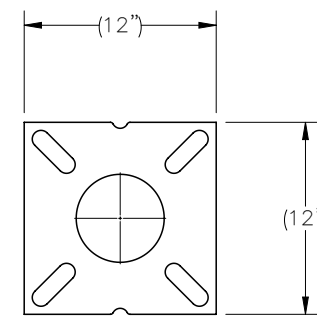
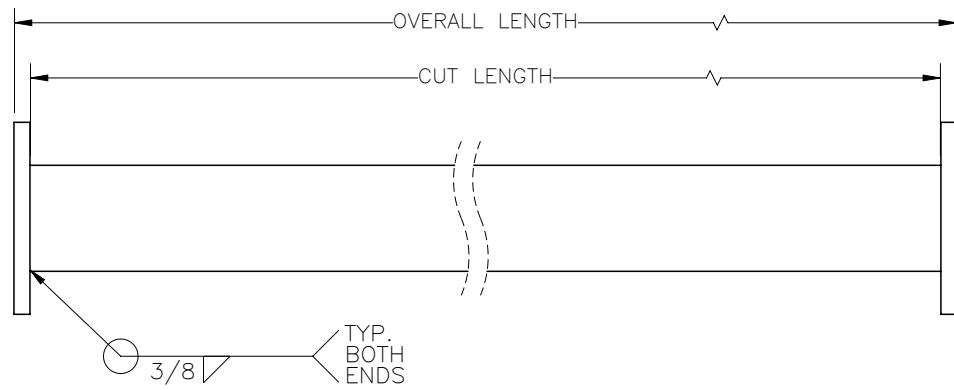
THE INFORMATION CONTAINED IN THIS DRAWING IS THE SOLE PROPERTY OF ELECTRO MECHANICAL INDUSTRIES, INC. ANY REPRODUCTION IN PART OR WHOLE WITHOUT THE WRITTEN PERMISSION OF ELECTRO MECHANICAL IND., IS PROHIBITED.

REVISIONS					
REV.	DCN #	DESCRIPTION	DATE	BY	APPROVED
2	01032	CREATED SUB-B.O.M. FOR WELDMENT	4/14/2021	PG	JPB



ITEM NO.	QTY REQD	PART NUMBER	DESCRIPTION	LENGTH	WEIGHT
1	1	1000-0020-0079	1" X 4" MOUNTING HARDWARE KIT		8
2	1	1007-T006-0000-W	6" EXTENSION WELDMENT	SEE TABLE	SEE TABLE
2.1	1	1007-T006-0000_1	HSS 6.625 X 0.280, ASTM A500, 42 KSI MIN. YIELD	SEE TABLE	SEE TABLE
2.2	2	P-000-979	TOP PLATE	12"	30.1

SURFACE FINISH <input checked="" type="checkbox"/> UNLESS OTHERWISE SPECIFIED		UNLESS OTHERWISE SPECIFIED DIMENSIONS ARE IN INCHES		APPROVALS		DATE		 ELECTRO MECHANICAL INDUSTRIES, INC. 11230 NEESEHAW DRIVE HOUSTON, TEXAS 77065 1-800-453-0050	
MATERIAL SEE PARTS LIST		TOLERANCES		DRAWN		DATE			
THIRD ANGLE PROJECTION 		.0 ± .06		J. CRITELLI		3.13.19		TITLE: 6" EXTENSION TABLE DRAWING	
		.00 ± .01		CHECKED		3.15.19			
		.000 ± .005		R. WOODARD		3.15.19			
		FRACTIONS ± 1/16		ENGINEER/DESIGNER		3.15.19			
		ANGLES ± .25°		J. BREEN		3.15.19		SIZE B DRAWING NO. 1007-T006-0000 REV 2	
NEXT ASSY		HOLES: DRILLED OR PUNCHED		PRODUCTION		3.18.19			
APPLICATIONS		BURNED ± 1/32		J.K.S.				SCALE: 1:1 WEIGHT: SHEET 1 OF 2	



PART #	DESCRIPTION	CUT LENGTH	OVERALL LENGTH	WEIGHT
1007-T006-0060	0.5 FT EXTENSION	4 IN	6 IN	74.2 lbs
1007-T006-0120	1.0 FT EXTENSION	10 IN	12 IN	83.7 lbs
1007-T006-0180	1.5 FT EXTENSION	16 IN	18 IN	93.2 lbs
1007-T006-0240	2.0 FT EXTENSION	22 IN	24 IN	102.7 lbs
1007-T006-0300	2.5 FT EXTENSION	28 IN	30 IN	112.2 lbs
1007-T006-0360	3.0 FT EXTENSION	34 IN	36 IN	121.8 lbs
1007-T006-0420	3.5 FT EXTENSION	40 IN	42 IN	131.3 lbs
1007-T006-0480	4.0 FT EXTENSION	46 IN	48 IN	140.8 lbs
1007-T006-0540	4.5 FT EXTENSION	52 IN	54 IN	150.3 lbs
1007-T006-0600	5.0 FT EXTENSION	58 IN	60 IN	159.8 lbs
1007-T006-0660	5.5 FT EXTENSION	64 IN	66 IN	169.4 lbs
1007-T006-0720	6.0 FT EXTENSION	70 IN	72 IN	178.9 lbs
1007-T006-0780	6.5 FT EXTENSION	76 IN	78 IN	188.4 lbs
1007-T006-0840	7.0 FT EXTENSION	82 IN	84 IN	197.9 lbs
1007-T006-0900	7.5 FT EXTENSION	88 IN	90 IN	207.5 lbs
1007-T006-0960	8.0 FT EXTENSION	94 IN	96 IN	217.0 lbs
1007-T006-1020	8.5 FT EXTENSION	100 IN	102 IN	226.5 lbs
1007-T006-1080	9.0 FT EXTENSION	106 IN	108 IN	236.0 lbs
1007-T006-1140	9.5 FT EXTENSION	112 IN	114 IN	245.5 lbs
1007-T006-1200	10.0 FT EXTENSION	118 IN	120 IN	255.0 lbs
1007-T006-1260	10.5 FT EXTENSION	124 IN	126 IN	264.6 lbs
1007-T006-1320	11.0 FT EXTENSION	130 IN	132 IN	274.0 lbs
1007-T006-1380	11.5 FT EXTENSION	136 IN	138 IN	283.6 lbs
1007-T006-1440	12.0 FT EXTENSION	142 IN	144 IN	293.1 lbs
1007-T006-1500	12.5 FT EXTENSION	148 IN	150 IN	302.7 lbs

PART #	DESCRIPTION	CUT LENGTH	OVERALL LENGTH	WEIGHT
1007-T006-1560	13.0 FT EXTENSION	154 IN	156 IN	312.2 lbs
1007-T006-1620	13.5 FT EXTENSION	160 IN	162 IN	321.7 lbs
1007-T006-1680	14.0 FT EXTENSION	166 IN	168 IN	331.2 lbs
1007-T006-1740	14.5 FT EXTENSION	172 IN	174 IN	340.8 lbs
1007-T006-1800	15.0 FT EXTENSION	178 IN	180 IN	350.3 lbs
1007-T006-1860	15.5 FT EXTENSION	184 IN	186 IN	359.8 lbs
1007-T006-1920	16.0 FT EXTENSION	190 IN	192 IN	369.3 lbs
1007-T006-1980	16.5 FT EXTENSION	196 IN	198 IN	378.9 lbs
1007-T006-2040	17.0 FT EXTENSION	202 IN	204 IN	388.4 lbs
1007-T006-2100	17.5 FT EXTENSION	208 IN	210 IN	397.9 lbs
1007-T006-2160	18.0 FT EXTENSION	214 IN	216 IN	407.4 lbs
1007-T006-2220	18.5 FT EXTENSION	220 IN	222 IN	417.0 lbs
1007-T006-2280	19.0 FT EXTENSION	226 IN	228 IN	426.5 lbs
1007-T006-2340	19.5 FT EXTENSION	232 IN	234 IN	436.0 lbs
1007-T006-2400	20.0 FT EXTENSION	238 IN	240 IN	445.5 lbs
1007-T006-2460	20.5 FT EXTENSION	244 IN	246 IN	455.1 lbs
1007-T006-2520	21.0 FT EXTENSION	250 IN	252 IN	464.6 lbs
1007-T006-2580	21.5 FT EXTENSION	256 IN	258 IN	474.1 lbs
1007-T006-2640	22.0 FT EXTENSION	262 IN	264 IN	483.6 lbs
1007-T006-2700	22.5 FT EXTENSION	268 IN	270 IN	493.2 lbs
1007-T006-2760	23.0 FT EXTENSION	274 IN	276 IN	502.7 lbs
1007-T006-2820	23.5 FT EXTENSION	280 IN	282 IN	512.2 lbs
1007-T006-2880	24.0 FT EXTENSION	286 IN	288 IN	521.8 lbs
1007-T006-2940	24.5 FT EXTENSION	292 IN	294 IN	531.3 lbs
1007-T006-3000	25.0 FT EXTENSION	298 IN	300 IN	540.8 lbs

NOTES:
UNLESS OTHERWISE SPECIFIED,

1. ALL WELDING PER AWS D1.1, FCAW, E7XT-1 AND GMAW, ER70S-6 ELECTRODES.
2. SQUARENESS OF WELDED COMPONENTS TO BE WITHIN +/- 1/16".
3. ALL WELDS 3/16" FILLET OR SEAM WELDS ALL AROUND AS APPLICABLE PER JOINT.
4. ALL CAPTIVE TUBES MUST HAVE MIN. TWO WEEP HOLES (ONE UPPER, ONE LOWER) 7/16" DIA.
5. GALVANIZE PER ASTM A123.