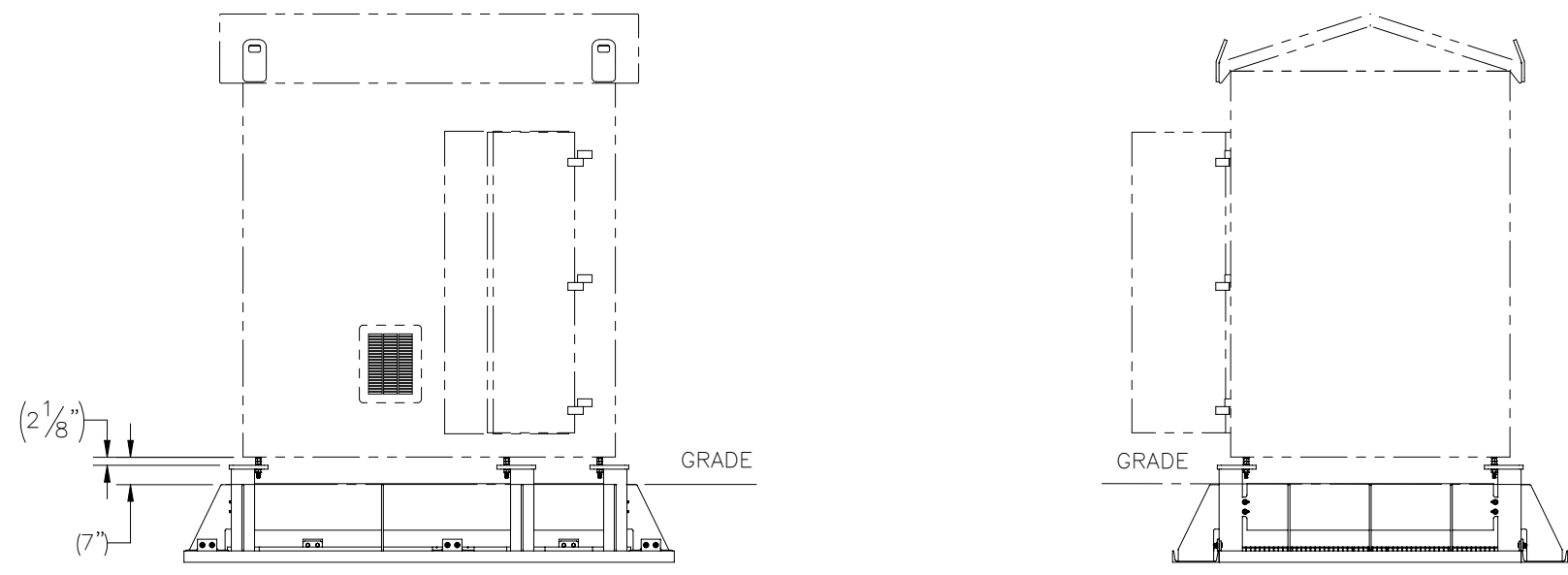
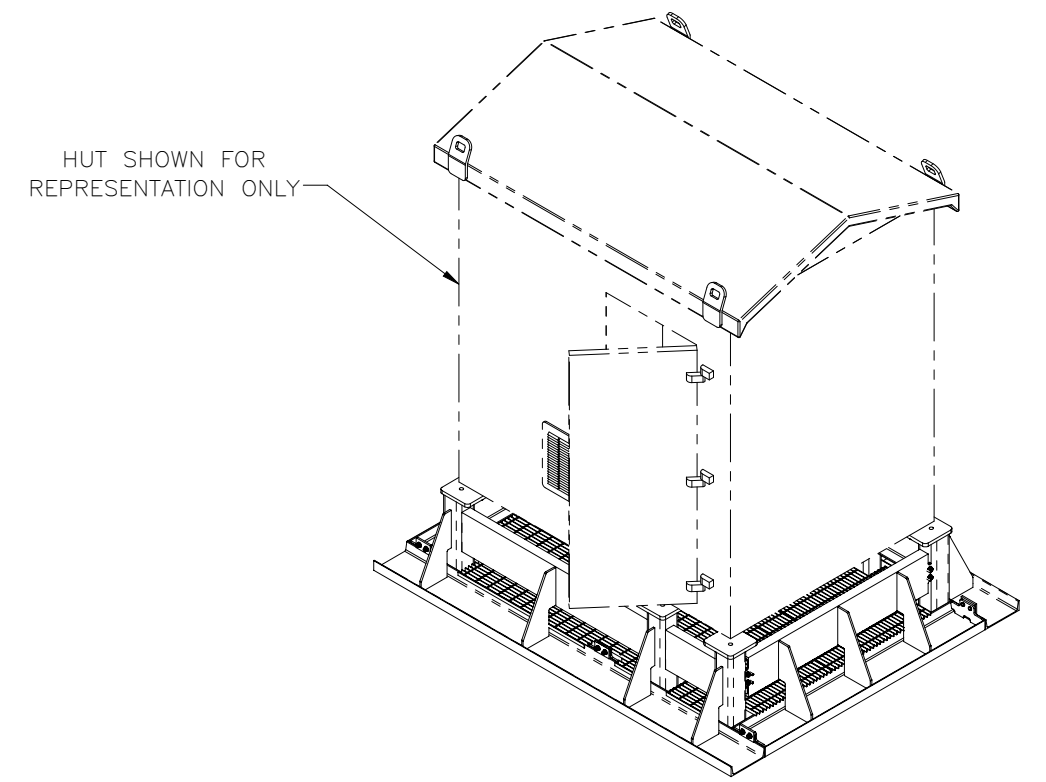
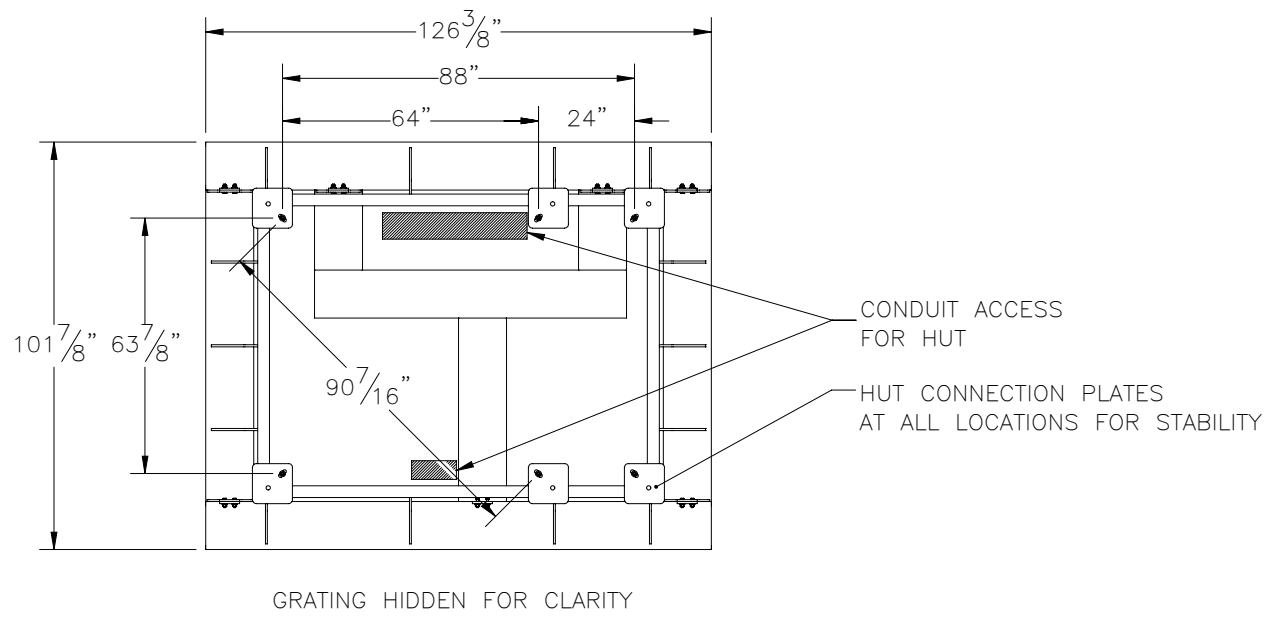

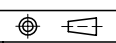


THE INFORMATION CONTAINED IN THIS DRAWING IS THE SOLE PROPERTY OF ELECTRO MECHANICAL INDUSTRIES, INC. ANY REPRODUCTION IN PART OR WHOLE WITHOUT THE WRITTEN PERMISSION OF ELECTRO MECHANICAL IND., IS PROHIBITED.

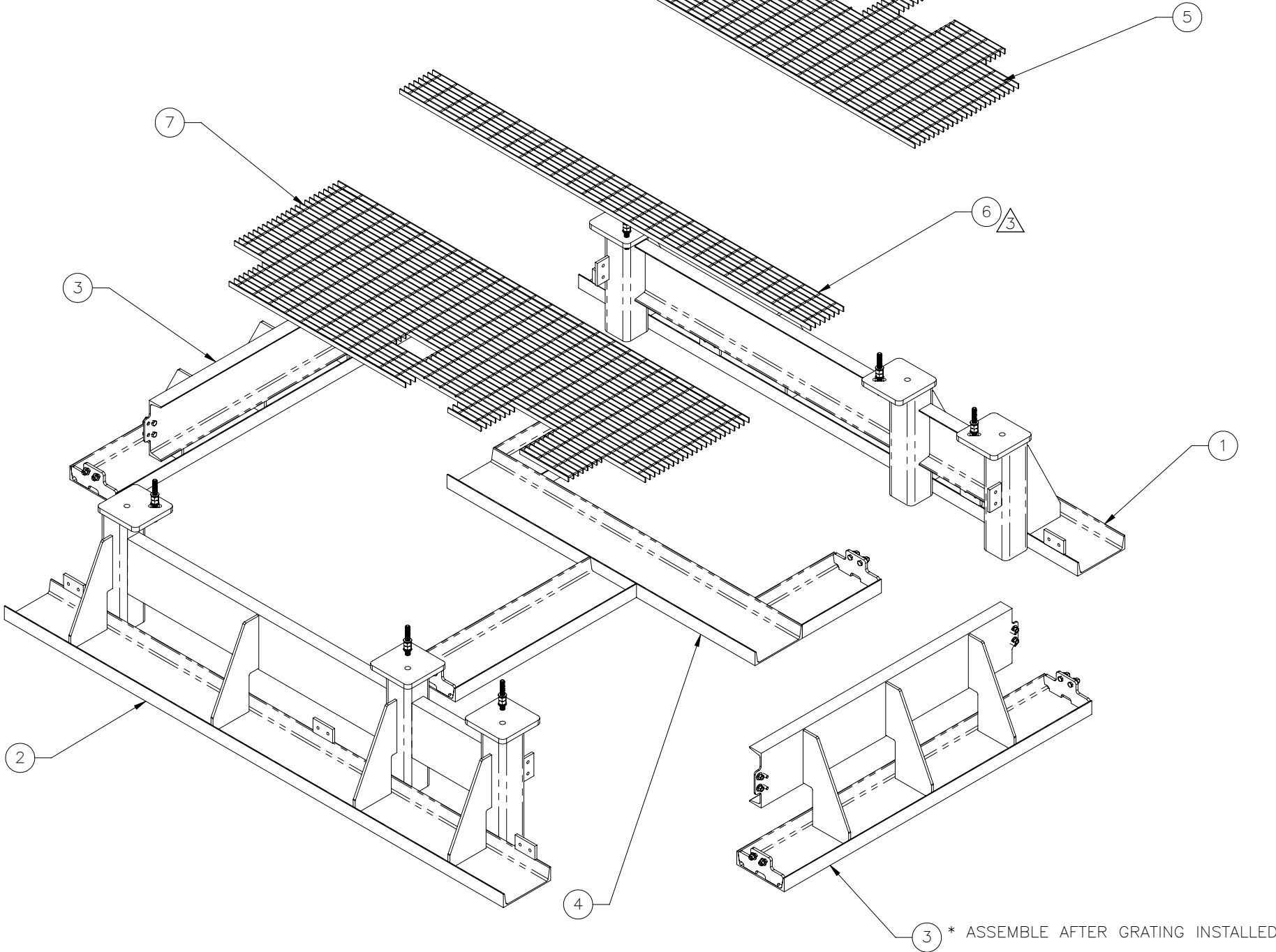
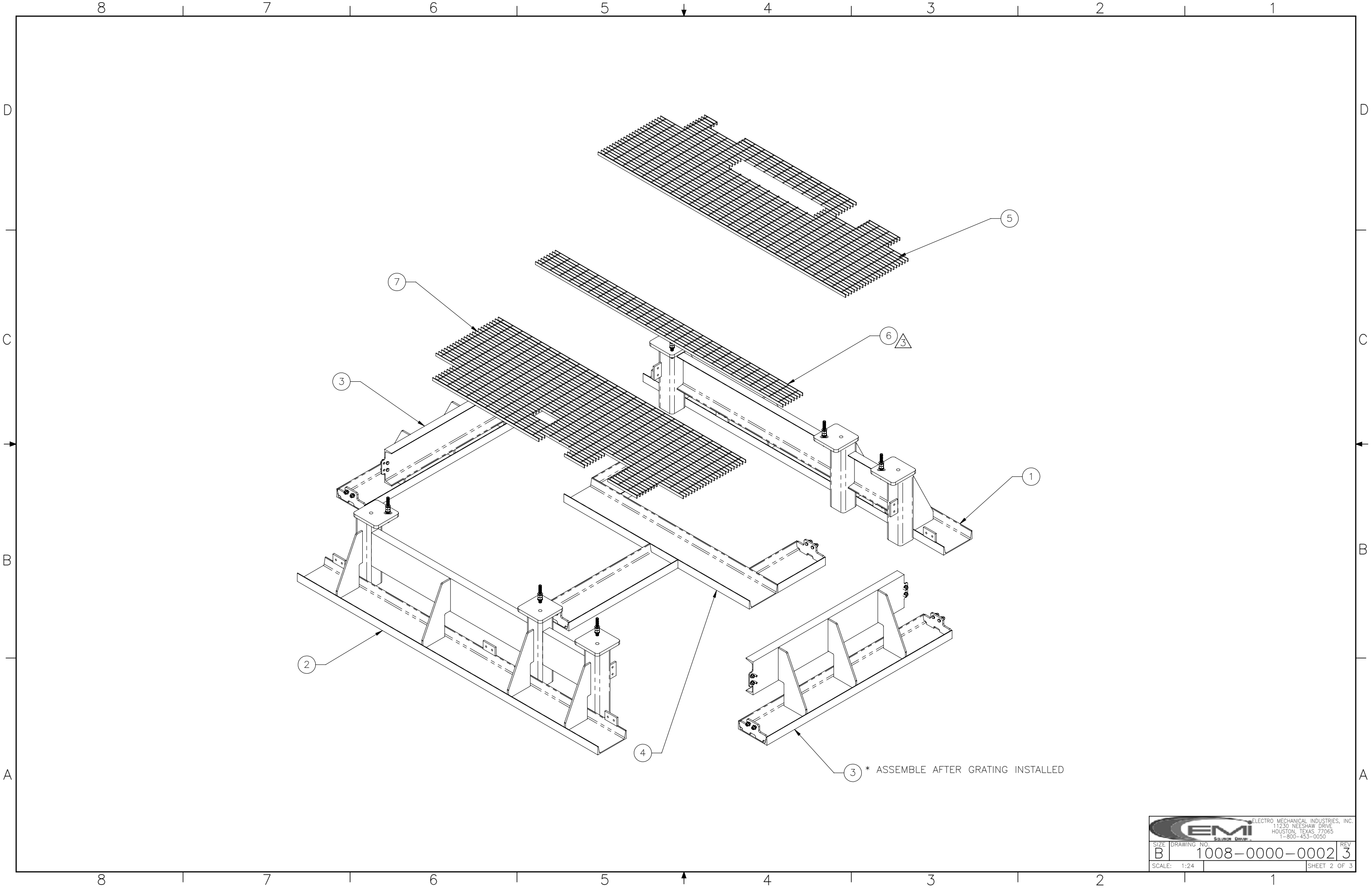
REVISIONS					
REV.	DCN #	DESCRIPTION	DATE	BY	APPROVED
3	01005	UPGRADED TO STANDARD GRATING	2.26.2021	BLH	JPB



ITEM NO.	QTY REQD	PART NUMBER	DESCRIPTION	LENGTH	WEIGHT
1	1	W-000-510	6X8 FOUNDATION BACK WELDMENT		743.39
2	1	W-000-512	6X8 FOUNDATION FRONT WELDMENT		741.33
3	2	W-000-513	6X6 FOUNDATION SIDE WELDMENT		315.6100
4	1	W-000-514	6X8 FOUNDATION GRATING SUPPORT WELDMENT		298.9177
5	1	P-001-412	FOUNDATION GRATING PANEL		154.72
6	1	T010-0084-1040	GRATING PANEL, 1" SMOOTH, 8 BAR, 8.5 WIDTH	104"	46.5
7	1	P-001-414	FOUNDATION GRATING PANEL		165.57
8	22	002-0BG-0014	BOLT HX. HD., .500-13UNC X 2.0" LG, ASTM A325, GALV.	2.00	0.2
9	22	002-0FW-G020	WASHER, FLAT, .500", USS, GALV		0.04
10	22	002-0LW-G002	WASHER, SPLIT LOCK, .500", GALV		0.01
11	22	002-0NG-0010	NUT, HEX, .500-13UNC, GR 2H, GALV		0.06
12	6	002-0AT-HA05	ROD, THREADED, .75-10UNC X 9.00 LG, ASTM A193 B7, GALV.		0.834
13	6	002-0NG-0016	NUT, HX, ANCO LOCKNUT, .75-10UNC, GR 2H, GALV		0.19
14	18	002-0FW-G003	FW, .75 F436, HDG		0.04
15	12	002-0LW-G003	WASHER, SPLIT LOCK, .75, GALV		0.05
16	12	002-0NG-0002	NUT, HX, .75-10UNC, GR 2H, GALV		0.19

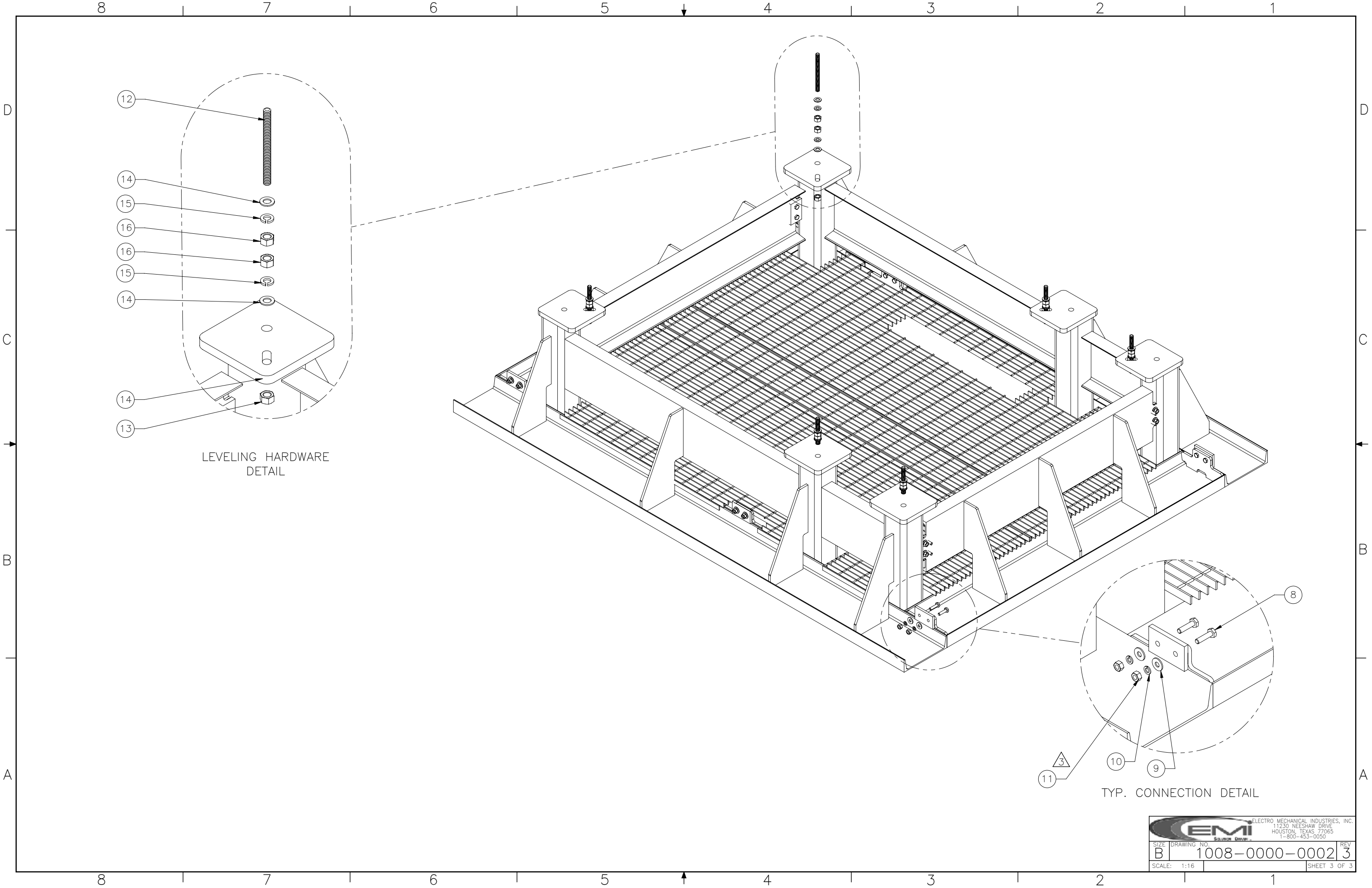
SURFACE FINISH <input checked="" type="checkbox"/> UNLESS OTHERWISE SPECIFIED		UNLESS OTHERWISE SPECIFIED DIMENSIONS ARE IN INCHES		APPROVALS		DATE		 ELECTRO MECHANICAL INDUSTRIES, INC. 11230 NEESESHAW DRIVE HOUSTON, TEXAS 77065 1-800-453-0050	
MATERIAL SEE PARTS LIST		TOLERANCES .0 ±.06 .00 ±.015 .000 ±.005		DRAWN RLWjr		5/2/2017			
THIRD ANGLE PROJECTION 		FRACTIONS ± 1/16 ANGLES ± .25°		CHECKER C. SANCHEZ		5/2/2017		TITLE: <b>BURIED FRAME, 6X8 HUT FOUNDATION</b>	
NEXT ASSY USED ON		HOLES: DRILLED OR PUNCHED ± 1/32 BURNED ± 1/32		ENGINEER J. BUSHMAN		5/17/2017			
APPLICATIONS				PRODUCTION J. BOWLDS		5/20/2017		SIZE <b>B</b> DRAWING NO. 1008-0000-0002 REV <b>3</b>	
						SCALE: 1:48		WEIGHT: 2797.74 lbs. SHEET 1 OF 3	

NOTES:  
1. BACKFILL WITH 12,000 LBS. OF BALLAST BASED ON A 75 PCF IN THE BOX AND AN ALLOWABLE BEARING CAPACITY OF SOIL OF 2500 PSF.



3 \* ASSEMBLE AFTER GRATING INSTALLED

		ELECTRO MECHANICAL INDUSTRIES, INC. 11230 NEESHAW DRIVE HOUSTON, TEXAS 77065 1-800-453-0050	
SIZE	DRAWING NO.	REV.	
B	1008-0000-0002	3	
SCALE: 1:24		SHEET 2 OF 3	



LEVELING HARDWARE  
DETAIL

TYP. CONNECTION  
DETAIL

		ELECTRO MECHANICAL INDUSTRIES, INC. 11230 NEESHAW DRIVE HOUSTON, TEXAS 77065 1-800-453-0050	
SIZE	DRAWING NO.	REV.	
B	1008-0000-0002	3	
SCALE: 1:16		SHEET 3 OF 3	