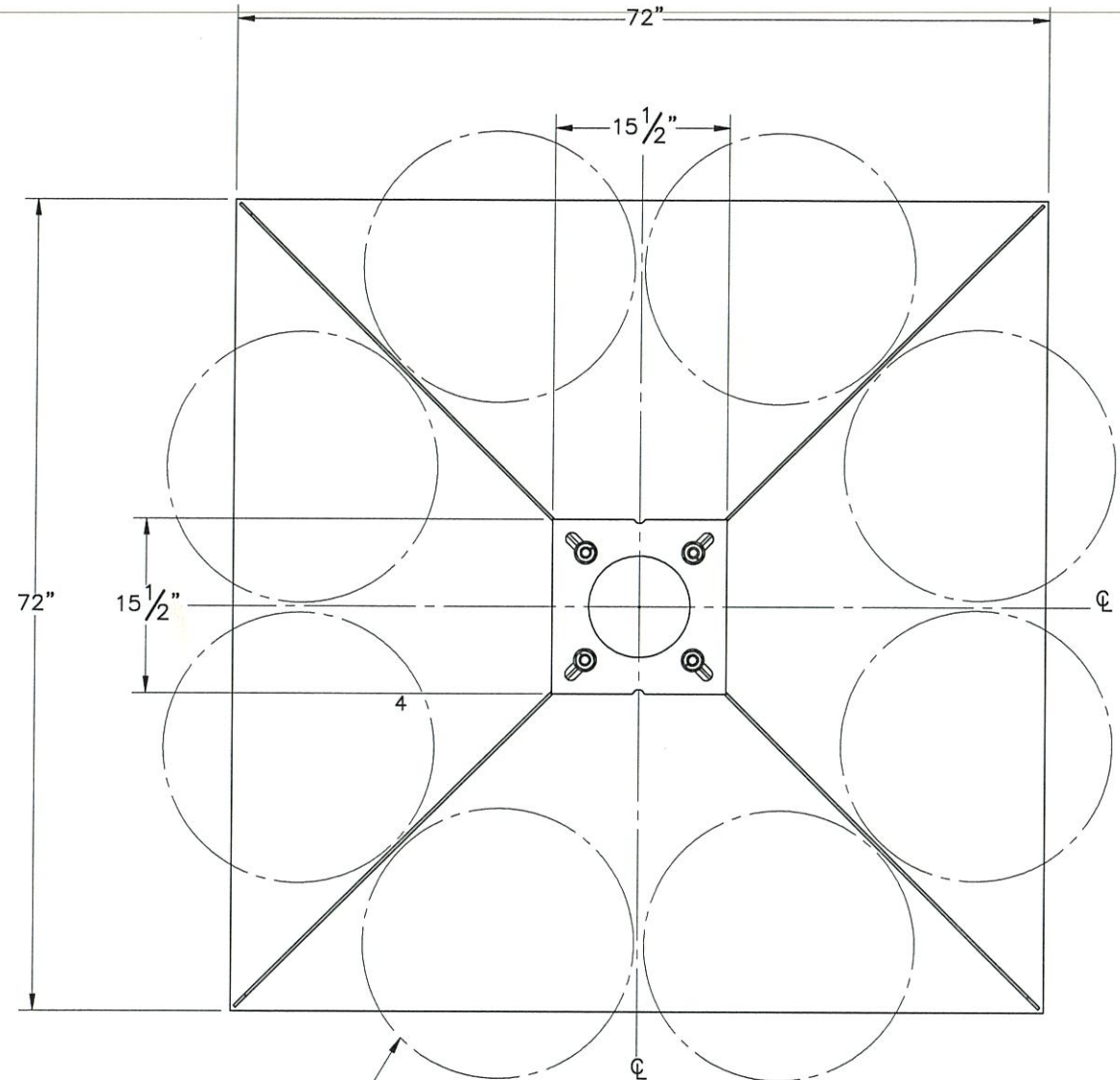
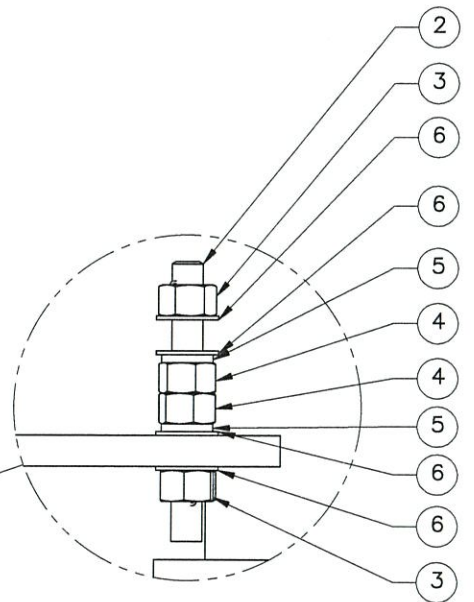
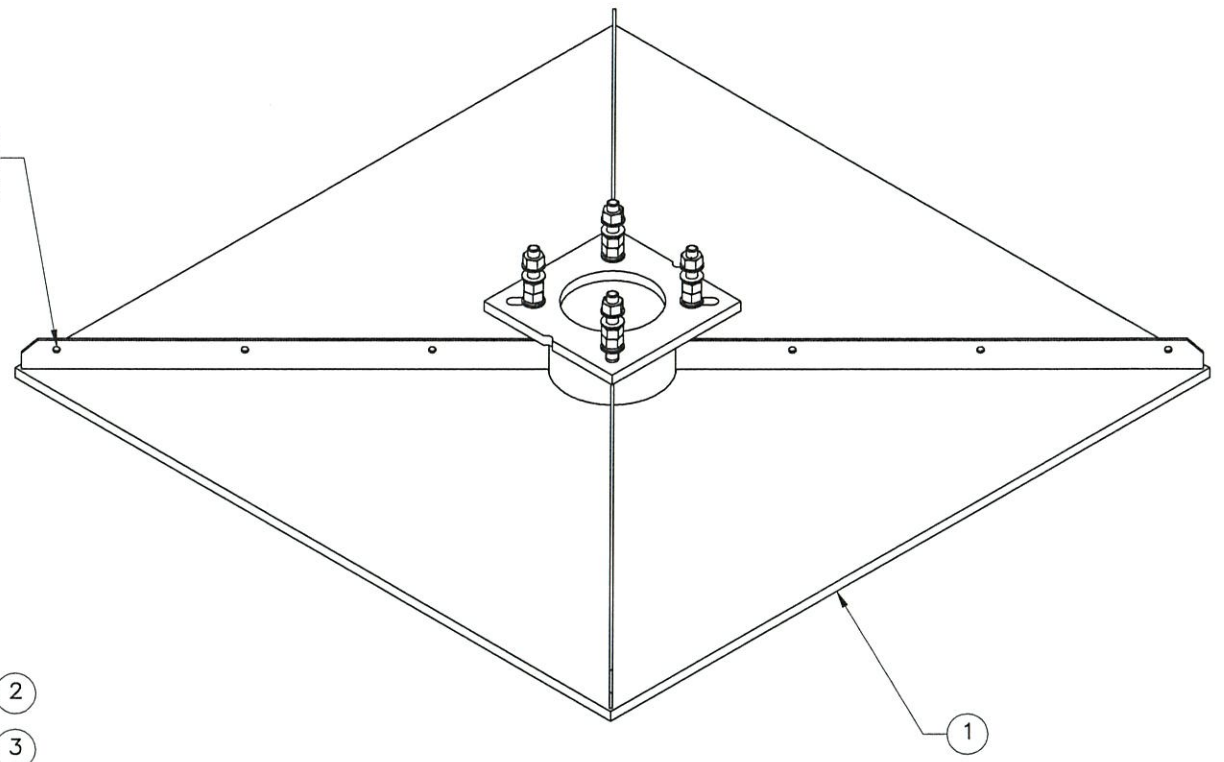


THE INFORMATION CONTAINED IN THIS DRAWING IS THE SOLE PROPERTY OF ELECTRO MECHANICAL INDUSTRIES, INC. ANY REPRODUCTION IN PART OR WHOLE WITHOUT THE WRITTEN PERMISSION OF ELECTRO MECHANICAL IND., IS PROHIBITED.

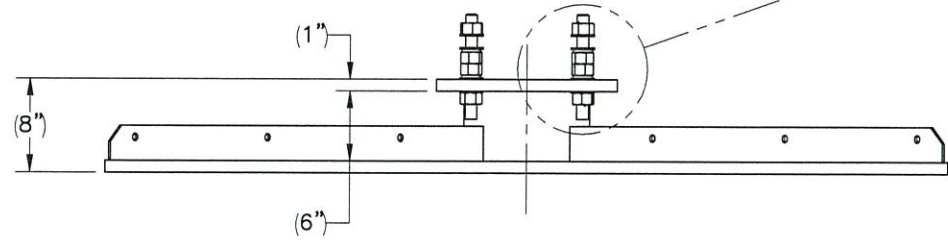


3,000 LB OF UNIFORMLY DISTRIBUTED BALLAST WEIGHT REQUIRED


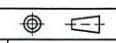
USE $\phi 5/8$ " HOLES TO SECURE BALLAST/WATER CONTAINERS



LEVELING HARDWARE DETAIL



ITEM NO.	QTY REQD	PART NUMBER	DESCRIPTION	LENGTH	WEIGHT
1	1	W-000-712	BALLAST FOUNDATION WELDMENT		1550.2
2	4	002-OAT-H000	ROD, THREADED, 1.00"-8 X 9.00" LG, ASTM A193 B7, GALV		2.01
3	8	002-ONG-0000	NUT, HX, ANCO LOCK, 1.00"-8UNC, GR 2H, GALV		0.43
4	8	002-ONG-0008	NUT, HX, 1.00"-8UNC, GR 2H, GALV		0.42
5	8	002-OLW-G008	WASHER, SPLIT LOCK, 1.00", GALV		0.09
6	16	002-OFW-G009	WASHER, FLAT, 1.00", F436, GALV		0.08

SURFACE FINISH <input checked="" type="checkbox"/> UNLESS OTHERWISE SPECIFIED		UNLESS OTHERWISE SPECIFIED DIMENSIONS ARE IN INCHES		APPROVALS	DATE	 ELECTRO MECHANICAL INDUSTRIES, INC. 11230 NEESHAW DRIVE HOUSTON, TEXAS 77065 1-800-453-0050
MATERIAL	SEE PARTS LIST	TOLERANCES		DRAWN C. SANCHEZ	10.26.17	
THIRD ANGLE PROJECTION		.00 ± .06 .000 ± .01 .000 ± .005		CHECKED <i>[Signature]</i>	10.26.17	
NEXT ASSY	USED ON	FRACTIONS ± 1/16 ANGLES ± .25		ENGINEER/DESIGNER <i>[Signature]</i>	10.26.17	
APPLICATIONS		HOLES: DRILLED OR PUNCHED +1/32 BURNED ±1/32		PRODUCTION <i>[Signature]</i>	10.26.17	

TITLE: **6' X 6' X 1" BALLAST FOUNDATION**
 SIZE: B DRAWING NO. 1008-0000-0006 REV -
 SCALE: 1:16 WEIGHT: 1567.0 lbs. SHEET 1 OF 1