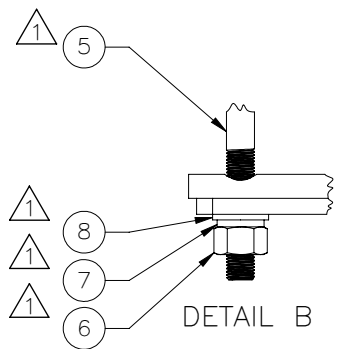
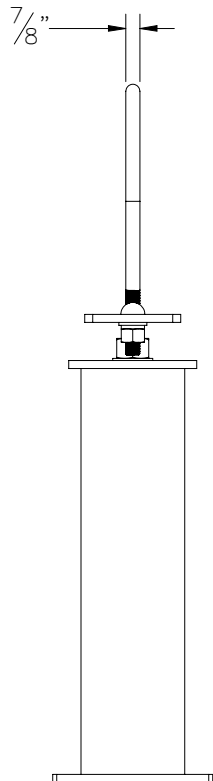
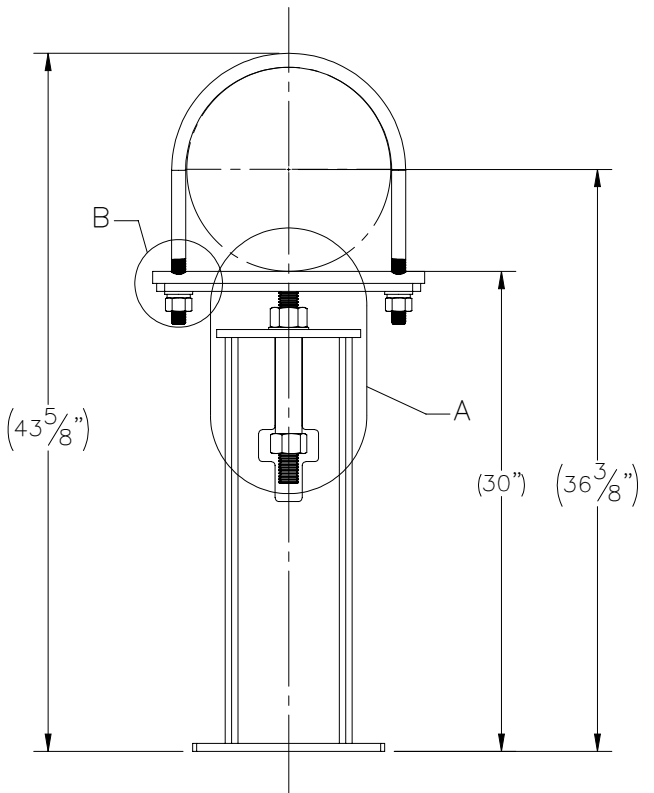
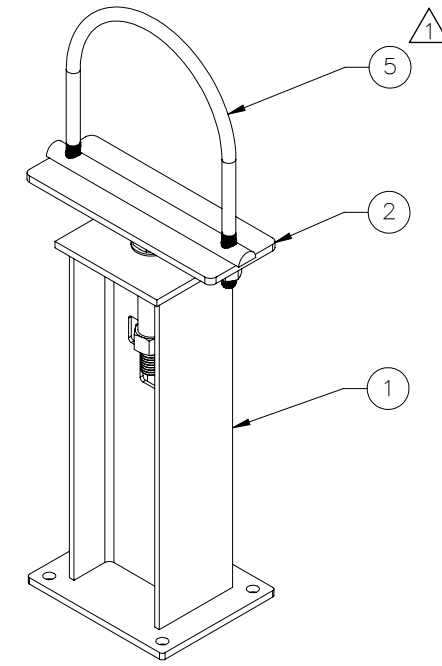
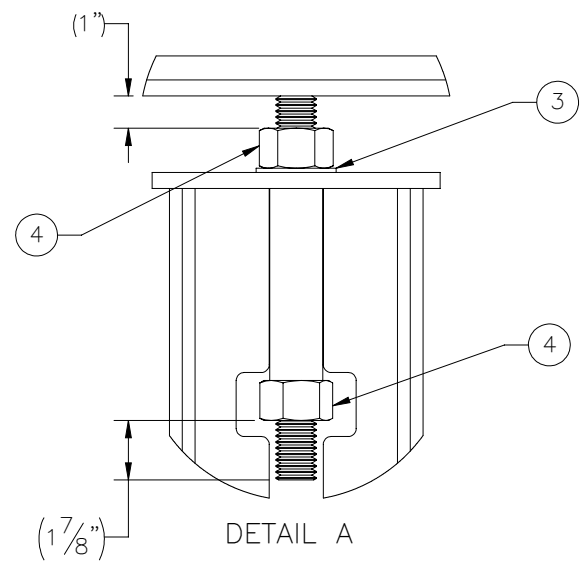
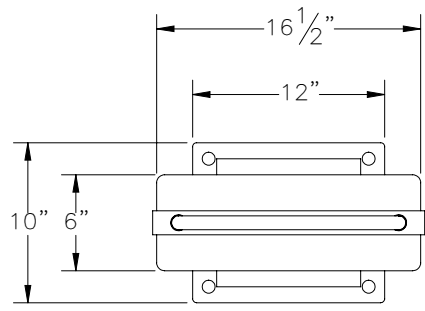

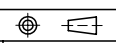


THE INFORMATION CONTAINED IN THIS DRAWING IS THE SOLE PROPERTY OF ELECTRO MECHANICAL INDUSTRIES, INC. ANY REPRODUCTION IN PART OR WHOLE WITHOUT THE WRITTEN PERMISSION OF ELECTRO MECHANICAL IND., IS PROHIBITED.

| REVISIONS | | | | | |
|-----------|----------|--|-----------|-----|----------|
| REV. | DCN # | DESCRIPTION | DATE | BY | APPROVED |
| 1 | DCN00785 | UPDATED DESCRIPTION OF U-BOLT. ADDED SPLIT LOCKS, FLAT WASHERS & NUTS TO BOM | 6.23.2020 | JGC | JPB |



| ITEM NO. | QTY REQD | PART NUMBER | DESCRIPTION | WEIGHT |
|----------|----------|--------------|---|--------|
| 1 | 1 | W-001-733 | 30" STAND, PIPE JACK, WELDMENT | 76.81 |
| 2 | 1 | w-001-734 | STAND, 12" PIPE JACK ADJUSTMENT ROD | 17.22 |
| 3 | 1 | 002-OFW-G011 | WASHER, FLAT, 1.25, ASTM F436, GALV | 0.13 |
| 4 | 2 | 002-ONG-0022 | NUT, HEAVY HEX, 1-1/4"-7, GR 2H, GALV. | 0.791 |
| 5 | 1 | 002-00U-G029 | 12" PIPE ISOLATING U-BOLT, 16-1/16" HT, 12-3/4" ID, THD 7/8-9 X 4-1/8 THD LGTH, A36 WITH POLYSHRINK. HALF-ROUND I-ROD | 1.36 |
| 6 | 2 | 002-ONG-0009 | NUT, HEX, .875-9UNC, GR 2H, GALV | 0.29 |
| 7 | 2 | 002-OLW-G007 | WASHER, SPLIT LOCK, .875, GALV | 0.06 |
| 8 | 2 | 002-OFW-G008 | WASHER, FLAT, .875, ASTM F436, GALV | 0.09 |

| | | | | | | | | | |
|--|--|---|--|----------------------------|--|--------------------|--|---|--|
| SURFACE FINISH <input checked="" type="checkbox"/> UNLESS OTHERWISE SPECIFIED | | UNLESS OTHERWISE SPECIFIED DIMENSIONS ARE IN INCHES | | APPROVALS | | DATE | |  ELECTRO MECHANICAL INDUSTRIES, INC. 11230 NEESEHAW DRIVE HOUSTON, TEXAS 77065 1-800-453-0050 | |
| MATERIAL SEE PARTS LIST | | TOLERANCES | | DRAWN RLWjr | | 12.09.2019 | | | |
| THIRD ANGLE PROJECTION  | | FRACTIONS ± 1/16 | | CHECKED B. HUTSON | | 12.10.19 | | TITLE: 12" PIPE STAND FOUNDATION | |
| NEXT ASSY USED ON | | ANGLES ± .25° | | ENGINEER/DESIGNER J. BREEN | | 12.13.19 | | | |
| APPLICATIONS | | HOLES: DRILLED OR PUNCHED ± 1/32 | | PRODUCTION J.K.S. | | 12.16.19 | | SIZE B DRAWING NO. 1008-0000-0013 REV 1 | |
| | | BURNED ± 1/32 | | SCALE: 1:12 | | WEIGHT: 97.98 lbs. | | SHEET 1 OF 1 | |