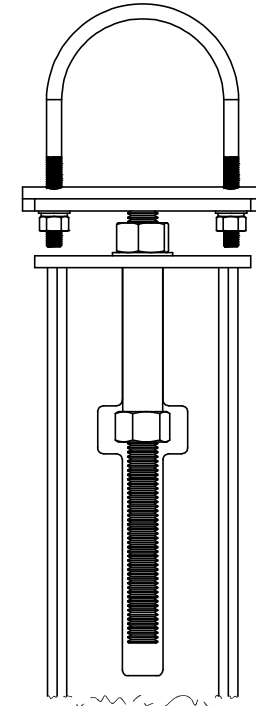
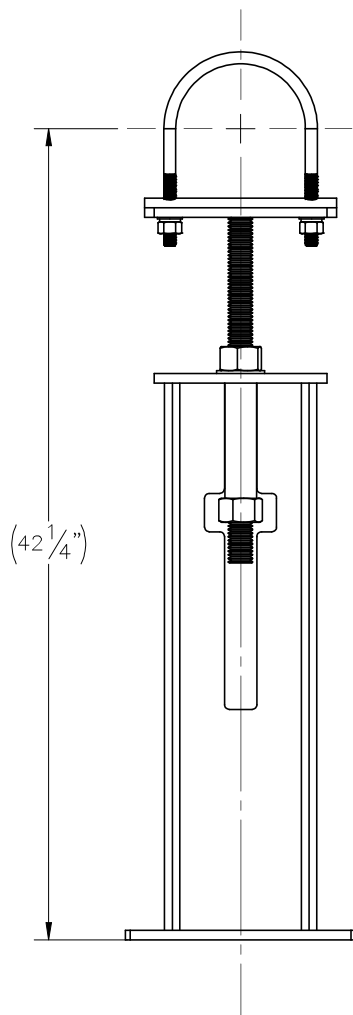
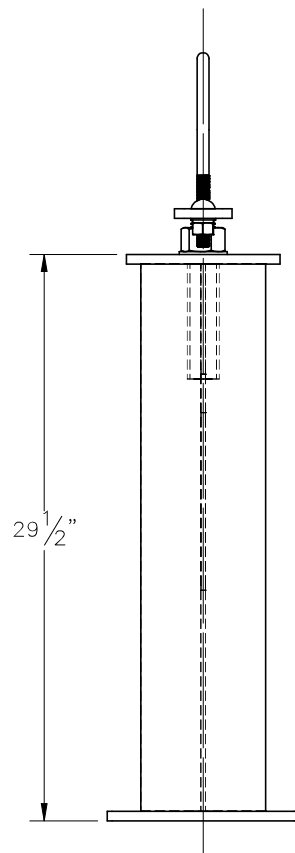
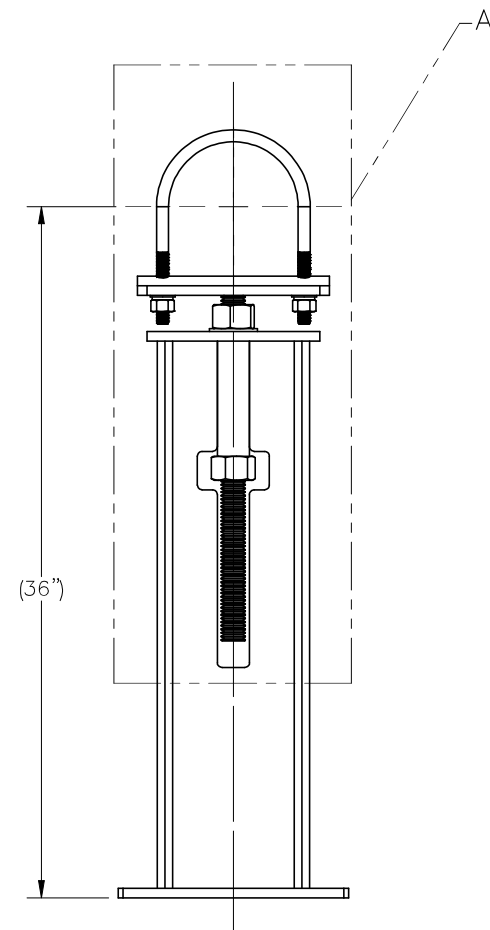
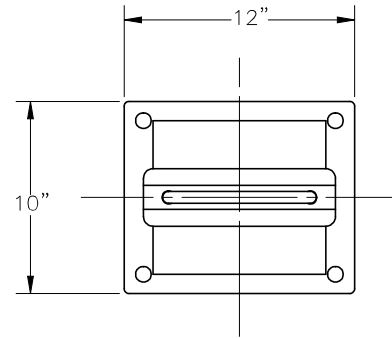
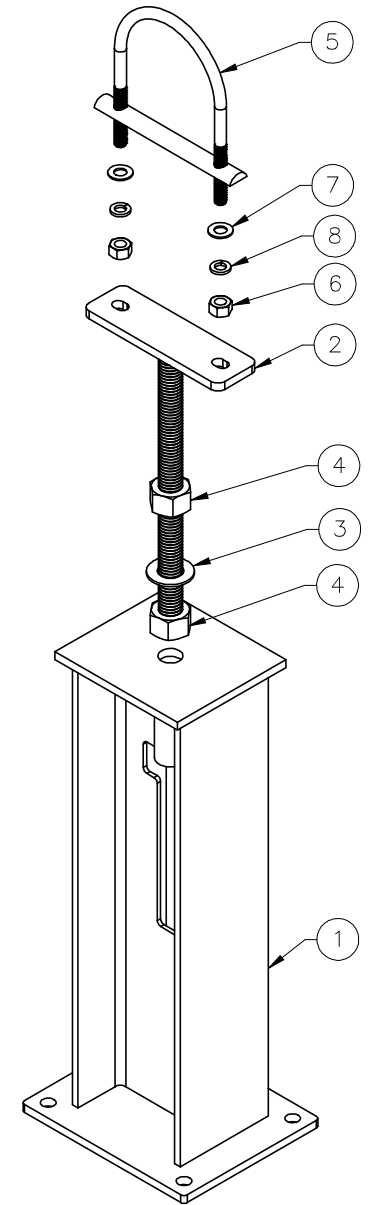



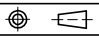
THE INFORMATION CONTAINED IN THIS DRAWING IS THE SOLE PROPERTY OF ELECTRO MECHANICAL INDUSTRIES, INC. ANY REPRODUCTION IN PART OR WHOLE WITHOUT THE WRITTEN PERMISSION OF ELECTRO MECHANICAL IND., IS PROHIBITED.



DETAIL A



ITEM NO.	QTY	PART NUMBER	DESCRIPTION	LENGTH	WEIGHT
1	1	W-002-004	STAND, PIPE JACK WELDMENT FOR 36" PIPE ELEV.		82.8
2	1	W-002-006	STAND, 6" PIPE JACK ADJUSTMENT ROD		9.3
3	1	002-0FW-G011	WASHER, FLAT, 1.25, ASTM F436, GALV		0.13
4	2	002-0NG-0022	NUT, HEAVY HEX, 1-1/4"-7, GR 2H, GALV.		0.791
5	1	002-00U-G033	6.00 PIPE ISOLATING U BOLT, .6250-11 X 3.750 THD. LGTH. X 6.6250 ID X 9.50 HT. GALV. WITH POLYSHRINK, HALF-ROUND I-ROD		3.2
6	2	002-0NG-0004	NUT, HX, 0.625-11UNC, GR 2H, GALV		0.12
7	2	002-0FW-G004	WASHER, FLAT, .625", ASTM F436, GALV		0.03
8	2	002-0LW-G004	WASHER, SPLIT LOCK, .625 INCH, GALV		0.03

SURFACE FINISH <input checked="" type="checkbox"/> UNLESS OTHERWISE SPECIFIED		UNLESS OTHERWISE SPECIFIED DIMENSIONS ARE IN INCHES		APPROVALS		DATE		 ELECTRO MECHANICAL INDUSTRIES, INC. 11230 NEESEHAW DRIVE HOUSTON, TEXAS 77065 1-800-453-0050	
MATERIAL SEE PARTS LIST		TOLERANCES		DRAWN		7/15/2020			
THIRD ANGLE PROJECTION 		.0 ± .06		CHECKED		7/16/2020		TITLE: <h3>6" PIPE STAND FOUNDATION</h3>	
		.000 ± .005		ENGINEER/DESIGNER		7/16/2020			
		FRACTIONS ± 1/16		PRODUCTION		7/17/2020			
		ANGLES ± .25°		NEXT ASSY		USED ON		SIZE B DRAWING NO. 1008-0000-0019 REV -	
		HOLES: DRILLED OR PUNCHED ± 1/32		APPLICATIONS		BURNED ± 1/32		SCALE: 1:10 WEIGHT: 97.3 lbs. SHEET 1 OF 1	