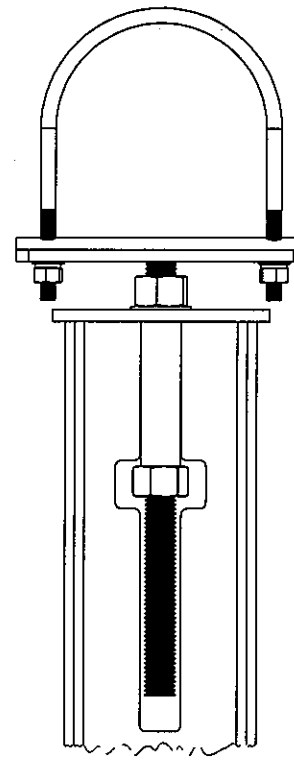
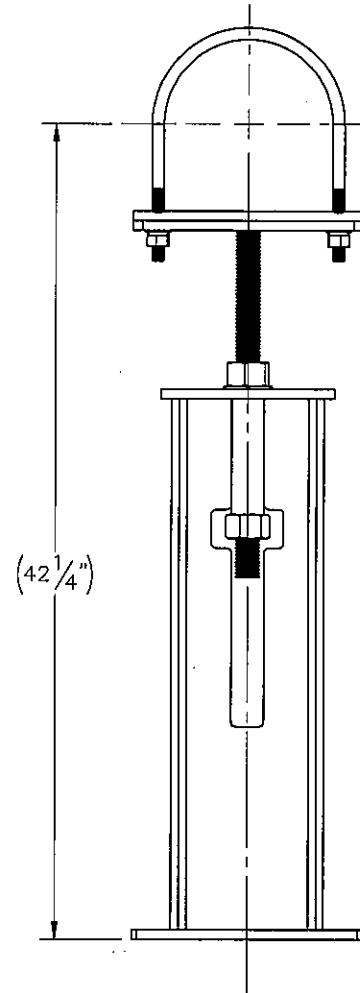
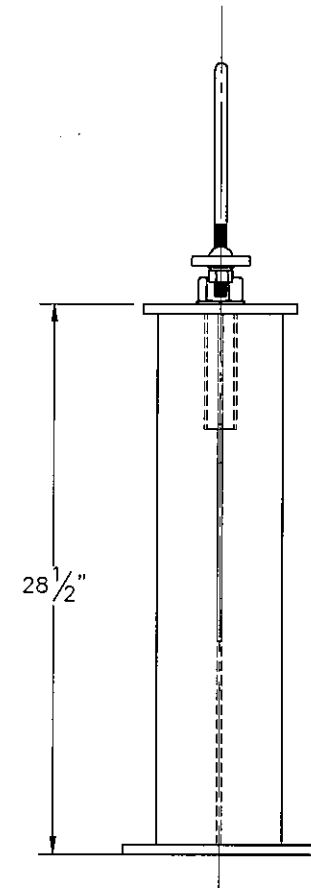
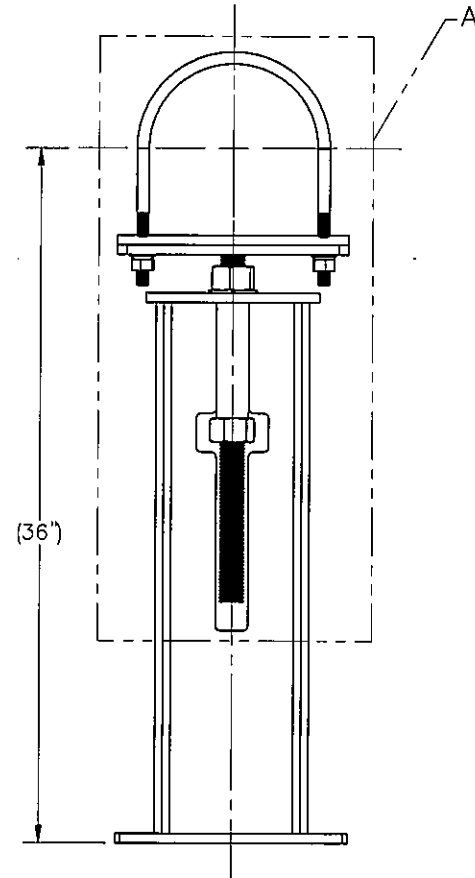
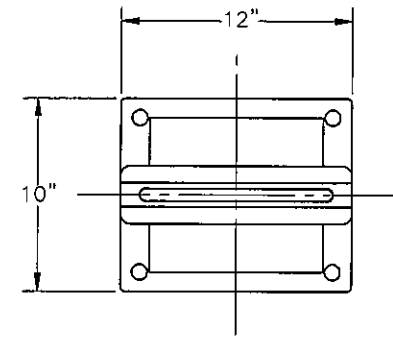
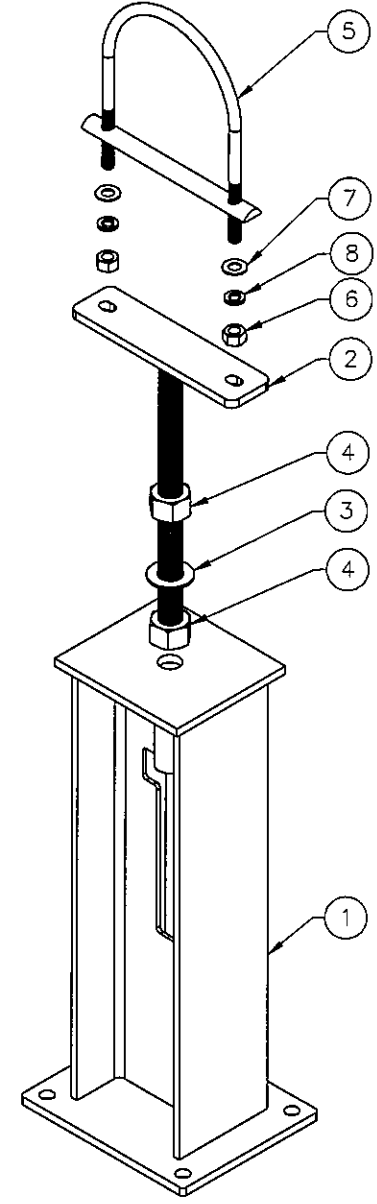



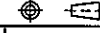
THE INFORMATION CONTAINED IN THIS DRAWING IS THE SOLE PROPERTY OF ELECTRO MECHANICAL INDUSTRIES, INC. ANY REPRODUCTION IN PART OR WHOLE WITHOUT THE WRITTEN PERMISSION OF ELECTRO MECHANICAL IND., IS PROHIBITED.



DETAIL A



ITEM NO.	QTY	PART NUMBER	DESCRIPTION	LENGTH	WEIGHT
1	1	W-002-014	STAND, PIPE JACK WELDMENT FOR 36" PIPE ELEV.		80.8
2	1	W-002-007	STAND, 8" PIPE JACK ADJUSTMENT ROD		10.1
3	1	002-0FW-G011	WASHER, FLAT, 1.25, ASTM F436, GALV		0.13
4	2	002-0NG-0022	NUT, HEAVY HEX, 1-1/4"-7, GR 2H, GALV.		0.791
5	1	002-00U-G034	8.00 PIPE ISOLATING U BOLT, .625-11 X 3.750 THD. LGTH. X 8.6250 ID X 11.50 HT. GALV. WITH POLYSHRINK, HALF-ROUND I-ROD		3.9
6	2	002-0NG-0004	NUT, HX, 0.625-11UNC, GR 2H, GALV		0.12
7	2	002-0FW-G004	WASHER, FLAT, .625", ASTM F436, GALV		0.03
8	2	002-0LW-G004	WASHER, SPLIT LOCK, .625 INCH, GALV		0.03

SURFACE FINISH <input checked="" type="checkbox"/> UNLESS OTHERWISE SPECIFIED		UNLESS OTHERWISE SPECIFIED DIMENSIONS ARE IN INCHES		APPROVALS	DATE	 ELECTRO MECHANICAL INDUSTRIES, INC. 11230 NEEDSHAW DRIVE HOUSTON, TEXAS 77065 1-800-453-0050
MATERIAL SEE PARTS LIST		TOLERANCES		DRAWN		
THIRD ANGLE PROJECTION 		.0 ± .04 .00 ± .015 .000 ± .005 FRACTIONS ± 1/16 ANGLES ± .25° HOLES: DRILLED OR PUNCHED +1/32 TURNED -1/32		CHECKED		
NEXT ASSY		USED ON		ENGINEER/DISIGNER		
APPLICATIONS		TURNED		J.K.S.	7/17/2020	TITLE: 8" PIPE STAND FOUNDATION
				PRODUCTION		SIZE B DRAWING NO. 1008-0000-0020 SCALE: 1:10 WEIGHT: GR 0.100 SHEET 1 OF 1