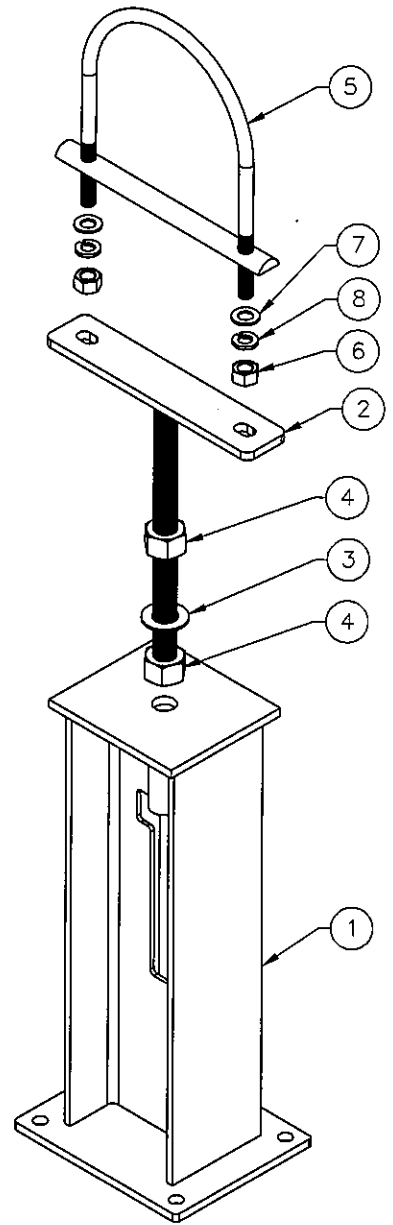
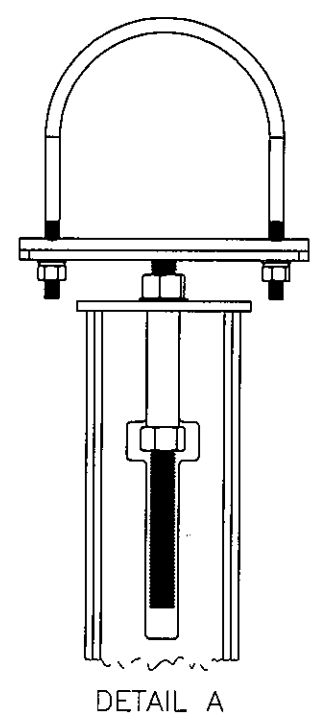
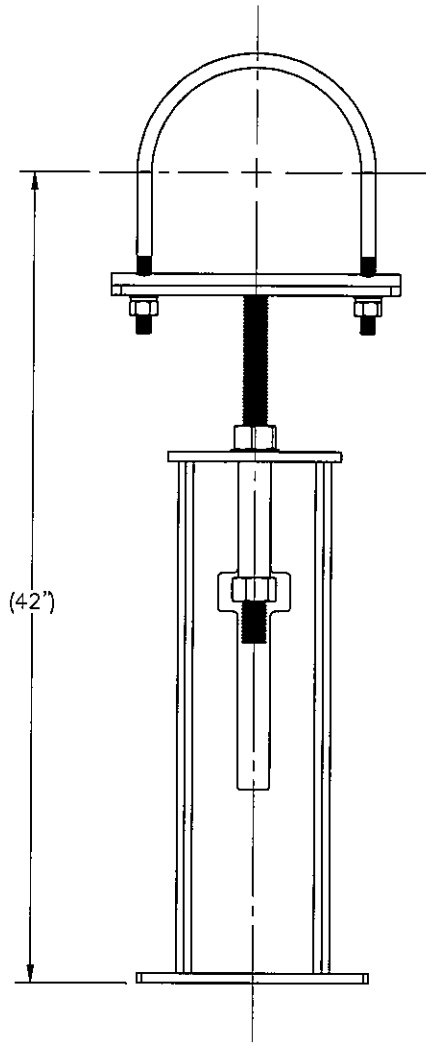
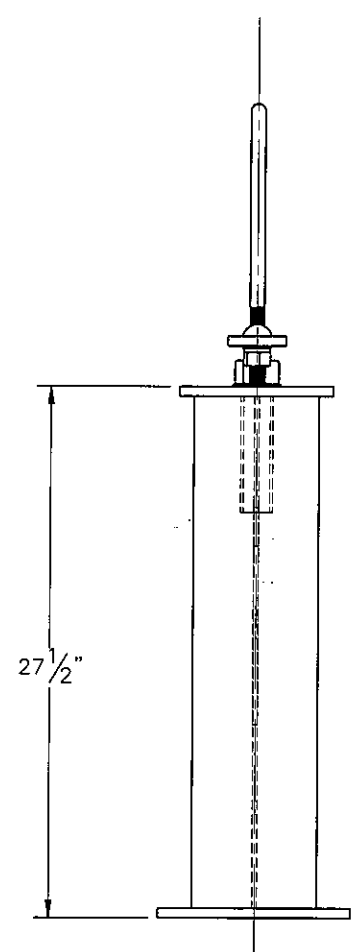
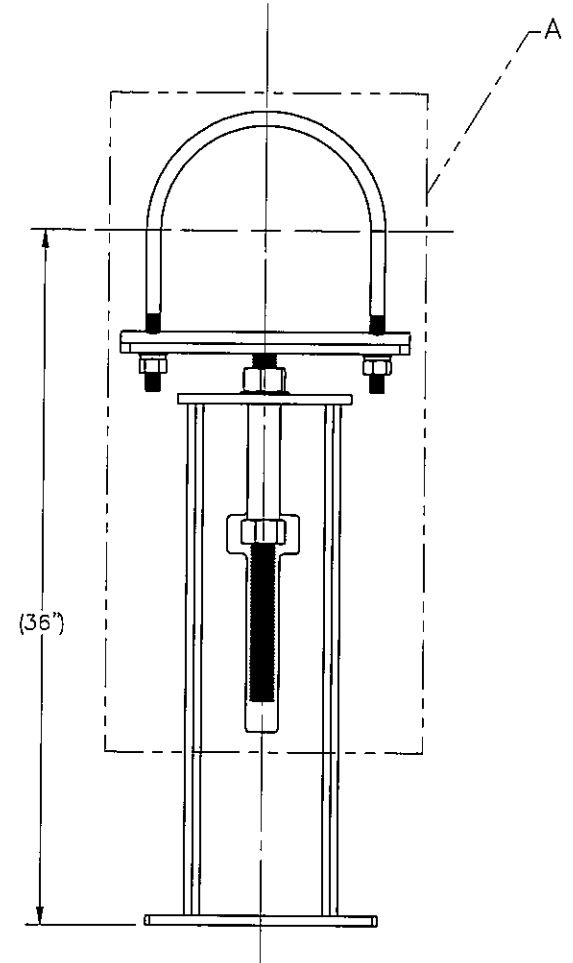
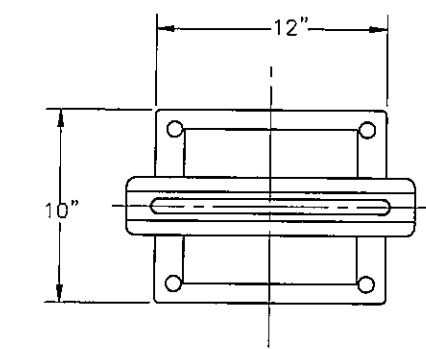

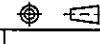


THE INFORMATION CONTAINED IN THIS DRAWING IS THE SOLE PROPERTY OF ELECTRO MECHANICAL INDUSTRIES, INC. ANY REPRODUCTION IN PART OR WHOLE WITHOUT THE WRITTEN PERMISSION OF ELECTRO MECHANICAL IND., IS PROHIBITED.



ITEM NO.		PART NUMBER	DESCRIPTION	LENGTH	WEIGHT
1	1	W-002-015	STAND, PIPE JACK WELDMENT FOR 36" PIPE ELEV.		78.8
2	1	W-002-008	STAND, 10" PIPE JACK ADJUSTMENT ROD		11.3
3	1	002-0FW-G011	WASHER, FLAT, 1.25, ASTM F436, GALV		0.13
4	2	002-0NG-0022	NUT, HEAVY HEX, 1-1/4"-7, GR 2H, GALV.		0.791
5	1	002-00U-G035	10.00 PIPE ISOLATING U BOLT, .750-10 X 4.00 THD. LGTH. X 10.750 ID X 13.8125 HT. GALV. WITH POLYSHRINK, HALF-ROUND I-ROD		7.1
6	2	002-0NG-0002	NUT, HX, .75-10UNC, GR 2H, GALV		0.19
7	2	002-0FW-G003	WASHER, FLAT, .75 INCH, ASTM F436, GALV		0.04
8	2	002-0LW-G003	WASHER, SPLIT LOCK, .75, GALV		0.05

SURFACE FINISH <input checked="" type="checkbox"/> UNLESS OTHERWISE SPECIFIED		UNLESS OTHERWISE SPECIFIED DIMENSIONS ARE IN INCHES		APPROVALS		DATE		 ELECTRO MECHANICAL INDUSTRIES, INC. 11230 NEESEHAW DRIVE HOUSTON, TEXAS 77065 1-800-453-0050	
MATERIAL SEE PARTS LIST		TOLERANCES		DRAWN P. GUTIERREZ		7/15/2020			
THIRD ANGLE PROJECTION 		FRACTIONS ± 1/16		CHECKED C. SANCHEZ		7/16/2020		10" PIPE STAND FOUNDATION	
NEXT ASSY		HOLES: DRILLED OR PUNCHED ± 1/32		ENGINEER/DESIGNER J. BREEN		7/16/2020			
APPLICATIONS		DIMENSIONS		PRODUCTION J.K.S.		7/17/2020		SIZE B DRAWING NO. 1008-0000-0021	