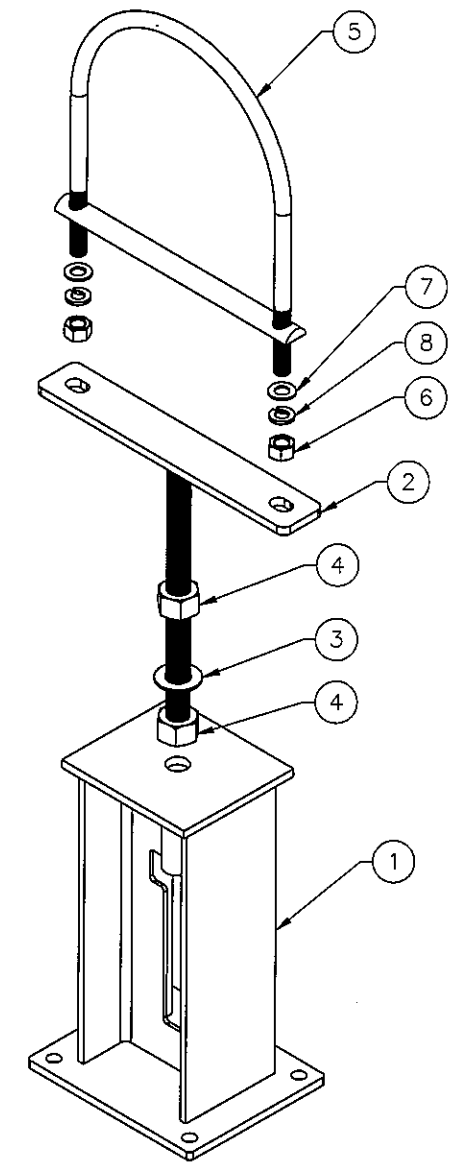
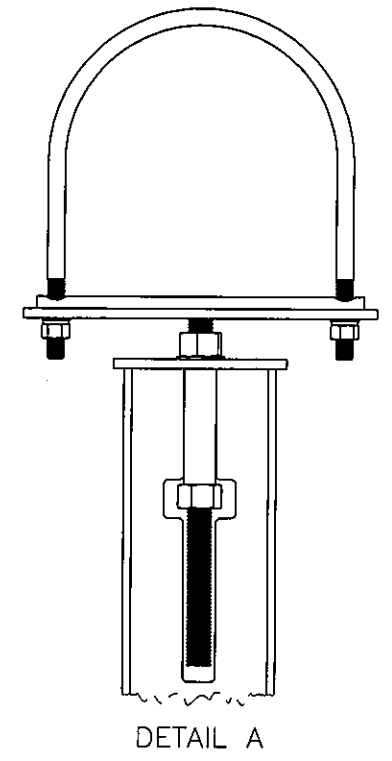
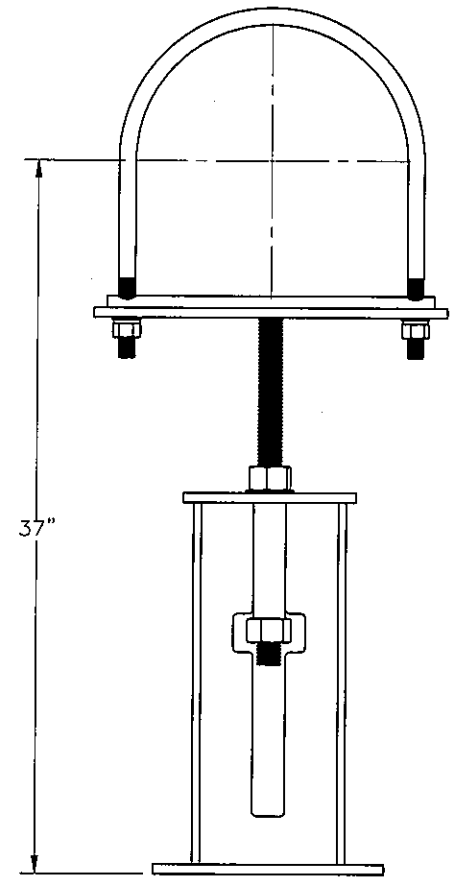
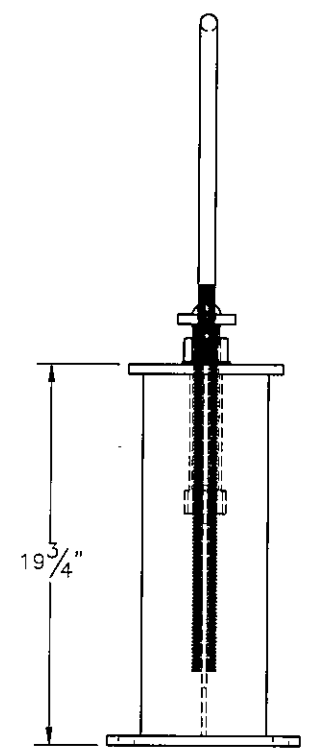
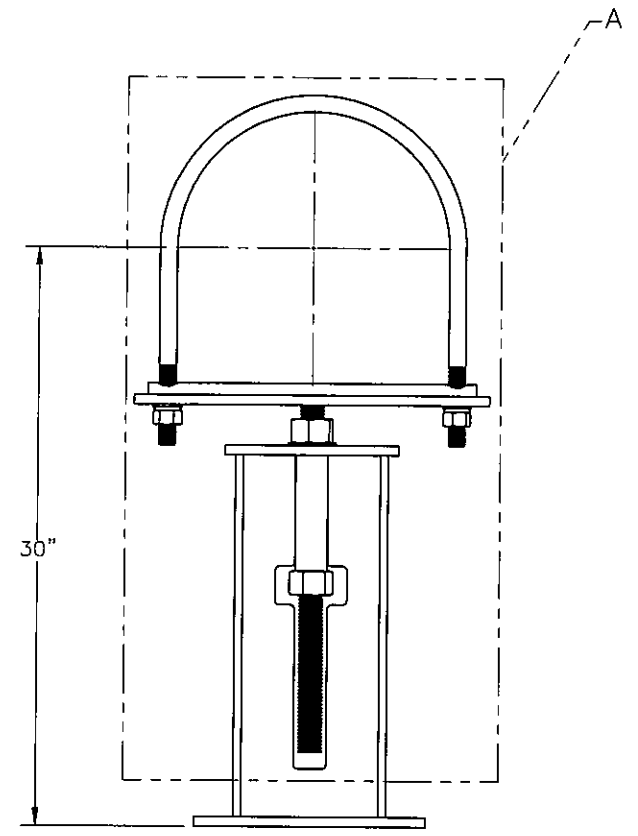
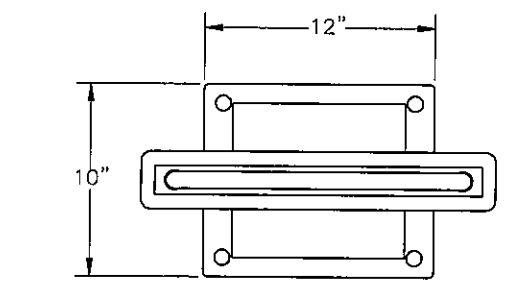

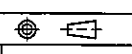


THE INFORMATION CONTAINED IN THIS DRAWING IS THE SOLE PROPERTY OF ELECTRO MECHANICAL INDUSTRIES, INC. ANY REPRODUCTION IN PART OR WHOLE WITHOUT THE WRITTEN PERMISSION OF ELECTRO MECHANICAL IND., IS PROHIBITED.



ITEM NO.	QTY REQD	PART NUMBER	DESCRIPTION	LENGTH	WEIGHT
1	1	W-002-021	STAND, 14" PIPE JACK WELDMENT		63.3
2	1	W-002-022	STAND, 14" PIPE JACK ADJUSTMENT ROD		12.7
3	1	002-0FW-G011	WASHER, FLAT, 1.25, ASTM F436, GALV		0.13
4	2	002-ONG-0022	NUT, HEAVY HEX, 1-1/4"-7, GR 2H, GALV.		0.791
5	1	002-00U-G037	14.00 PIPE ISOLATING U BOLT, .875-9" X 4.125 THD. LGTH. X 14.125 ID X 17.3125 HT. GALV. WITH POLYSHRINK, HALF-ROUND I-ROD		4.1
6	2	002-ONG-0002	NUT, HX, .75-10UNC, GR 2H, GALV		0.19
7	2	002-0FW-G003	WASHER, FLAT, .75 INCH, ASTM F436, GALV		0.04
8	2	002-0LW-G003	WASHER, SPLIT LOCK, .75, GALV		0.05

SURFACE FINISH <input checked="" type="checkbox"/> UNLESS OTHERWISE SPECIFIED		UNLESS OTHERWISE SPECIFIED DIMENSIONS ARE IN INCHES		APPROVALS	DATE	 <p>ELECTRO MECHANICAL INDUSTRIES, INC. 11230 NEESEHAW DRIVE HOUSTON, TEXAS 77065 1-800-453-0050</p>
MATERIAL SEE PARTS LIST		TOLERANCES		DRAWN	7/29/2020	
THIRD ANGLE PROJECTION 		.0 ± .06 .00 ± .015 .000 ± .005		CHECKED	7/30/2020	
NEXT ASSY		FRACTIONS ± 1/16 ANGLES ± .25°		ENGINEER/DESIGNER	7/31/2020	
USED ON		HOLES: DRILLED OR PUNCHED ± 1/32 BURNED ± 1/16		F. MERCHAN		<p>14" PIPE STAND FOUNDATION</p>
APPLICATIONS				PRODUCTION	8/1/2020	
				J.K.S.		<p>SIZE B DRAWING NO. 1008-0000-0023</p>