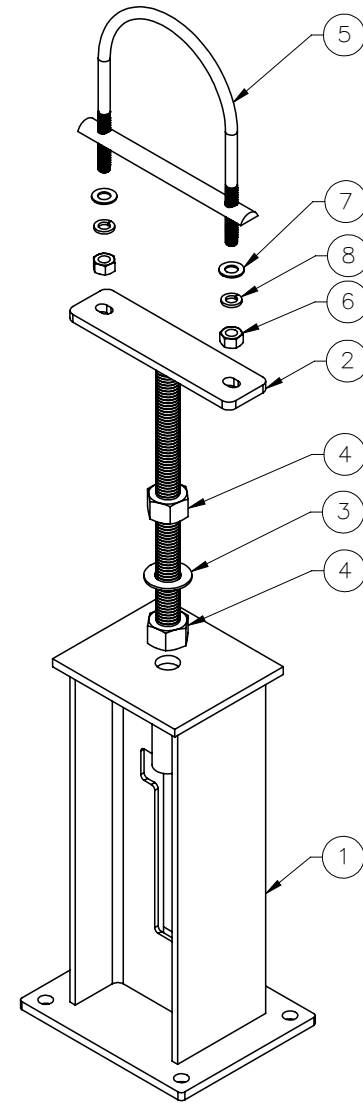
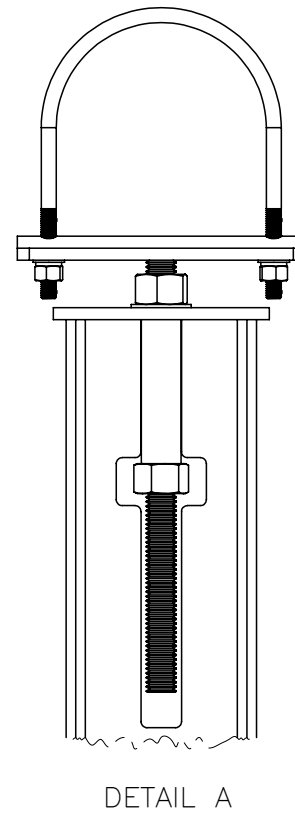
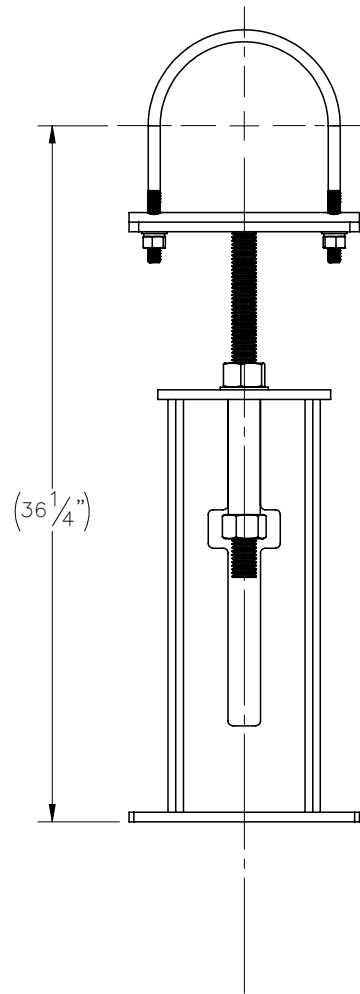
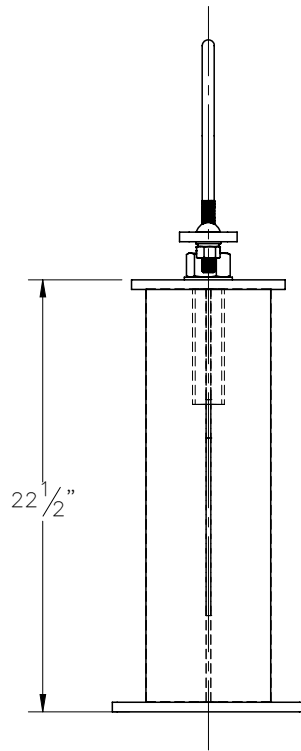
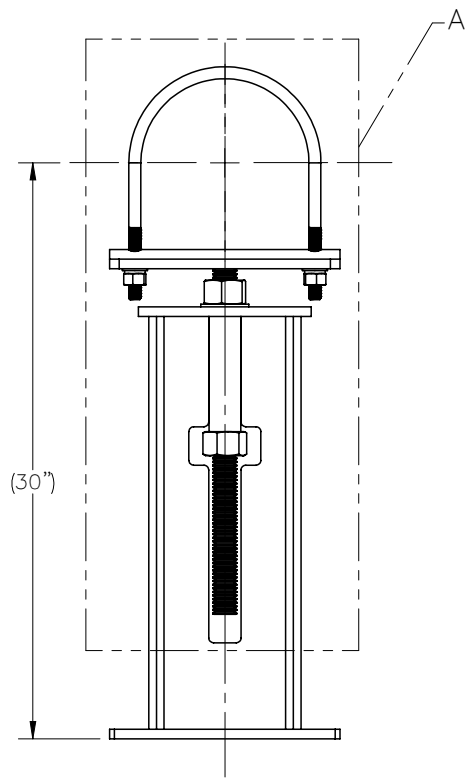
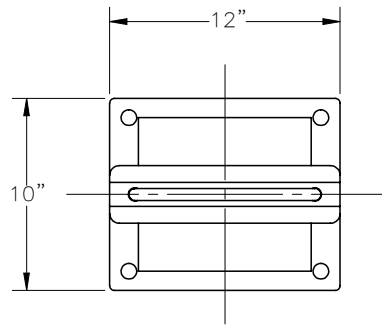

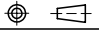


THE INFORMATION CONTAINED IN THIS DRAWING IS THE SOLE PROPERTY OF ELECTRO MECHANICAL INDUSTRIES, INC. ANY REPRODUCTION IN PART OR WHOLE WITHOUT THE WRITTEN PERMISSION OF ELECTRO MECHANICAL IND., IS PROHIBITED.



ITEM NO.	QTY	PART NUMBER	DESCRIPTION	LENGTH	WEIGHT
1	1	W-002-151	STAND, PIPE JACK WELDMENT FOR 30" PIPE ELEV.		68.7
2	1	W-002-007	STAND, 8" PIPE JACK ADJUSTMENT ROD		10.1
3	1	002-0FW-G011	WASHER, FLAT, 1.25, ASTM F436, GALV		0.13
4	2	002-0NG-0022	NUT, HEAVY HEX, 1-1/4"-7, GR 2H, GALV.		0.791
5	1	002-00U-G034	8.00 PIPE ISOLATING U BOLT, .6250-11 X 3.750 THD. LGTH. X 8.6250 ID X 11.50 HT. GALV. WITH POLYSHRINK, HALF-ROUND 1-ROD		3.9
6	2	002-0NG-0004	NUT, HX, 0.625-11UNC, GR 2H, GALV		0.12
7	2	002-0FW-G004	WASHER, FLAT, .625", ASTM F436, GALV		0.03
8	2	002-0LW-G004	WASHER, SPLIT LOCK, .625 INCH, GALV		0.03

SURFACE FINISH <input checked="" type="checkbox"/> UNLESS OTHERWISE SPECIFIED		UNLESS OTHERWISE SPECIFIED DIMENSIONS ARE IN INCHES		APPROVALS	DATE	 ELECTRO MECHANICAL INDUSTRIES, INC. 11230 NEESESHAW DRIVE HOUSTON, TEXAS 77065 1-800-453-0050
MATERIAL	SEE PARTS LIST	TOLERANCES		DRAWN	3/24/2021	
THIRD ANGLE PROJECTION		.0 ± .06		CHECKER	3/24/2021	TITLE: <h3>8" PIPE STAND FOUNDATION</h3>
		.000 ± .005		ENGINEER	3/24/2021	
		FRACTIONS ± 1/16		PRODUCTION	3/25/2021	
NEXT ASSY	USED ON	ANGLES ± .25°		JKS		SIZE B DRAWING NO. 1008-0000-0028 SCALE: 1:4 WEIGHT: 84.8 lbs. SHEET 1 OF 1
APPLICATIONS		HOLES: DRILLED OR PUNCHED ± 1/32				
		BURNED ± 1/32				