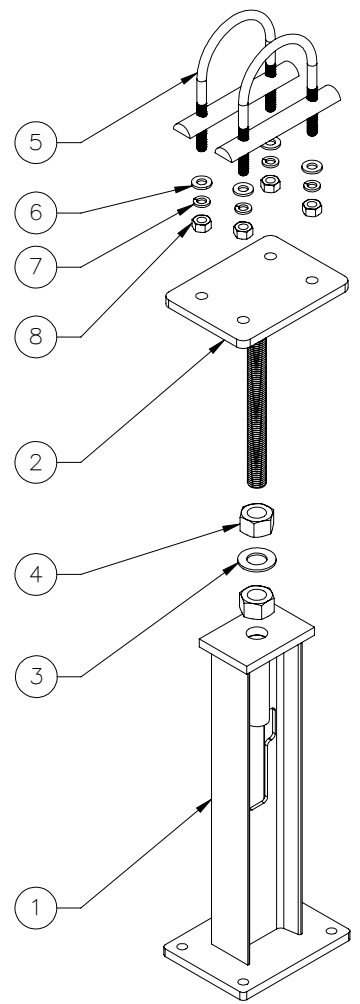
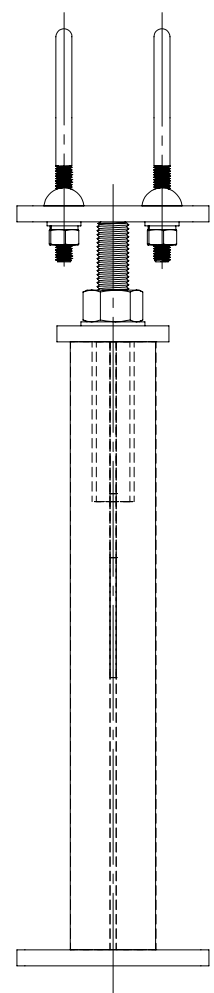
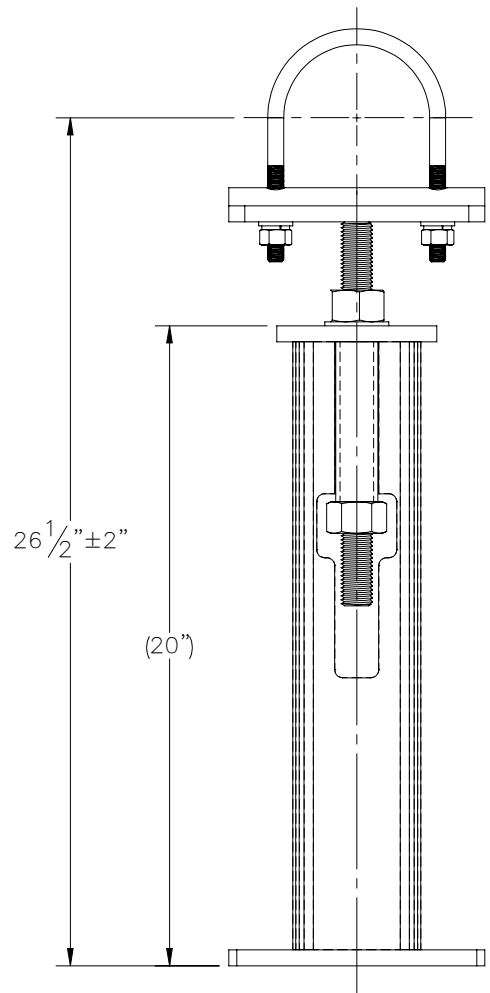
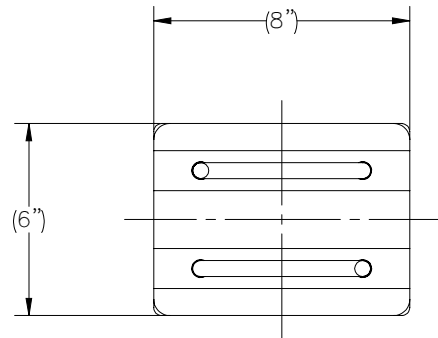

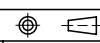


THE INFORMATION CONTAINED IN THIS DRAWING IS THE SOLE PROPERTY OF ELECTRO MECHANICAL INDUSTRIES, INC. ANY REPRODUCTION IN PART OR WHOLE WITHOUT THE WRITTEN PERMISSION OF ELECTRO MECHANICAL IND., IS PROHIBITED.



ITEM NO.	QTY REQD	PART NUMBER	DESCRIPTION	LENGTH	WEIGHT
1	1	W-002-250	STAND, PIPE JACK, WELDMENT		10.52
2	1	W-002-251	STAND, PIPE JACK ADJUSTMENT ROD FOR 4" PIPE		8.86
3	1	002-0FW-G009	WASHER, FLAT, 1.00", F436, GALV.		0.08
4	2	002-0NG-0008	NUT, HX, 1.00"-8UNC, GR 2H, GALV		0.42
5	2	002-00U-G030	4.00 PIPE ISOLATING U BOLT, .500-13 X 3.00 THD. LGTH. X 4.5625 ID X 6.8125 HT. GALV. WITH POLYSHRINK, HALF-ROUND I-ROD		2.02
6	4	002-0FW-G002	FW, .50, F436, HDG		0.02
7	4	002-0LW-G002	WASHER, SPLIT LOCK, .500", GALV		0.01
8	4	002-0NG-0010	NUT, HEX, .500-13UNC, GR 2H, GALV		0.06

SURFACE FINISH <input checked="" type="checkbox"/> UNLESS OTHERWISE SPECIFIED		UNLESS OTHERWISE SPECIFIED DIMENSIONS ARE IN INCHES		APPROVALS		DATE		 ELECTRO MECHANICAL INDUSTRIES, INC. 11230 NEESESHAW DRIVE HOUSTON, TEXAS 77065 1-800-453-0050	
MATERIAL SEE PARTS LIST		TOLERANCES		DRAWN J. ROACH		10/18/2021			
THIRD ANGLE PROJECTION 		.0 ± .06		CHECKER B. HUTSON		10/18/2021		TITLE: <h3 style="text-align: center;">4" PIPE STAND FOUNDATION</h3>	
		.000 ± .005		ENGINEER J. Breen		10/18/2021			
		FRACTIONS ± 1/16		PRODUCTION J. Lee		10/18/2021			
		ANGLES ± .25°		NEXT ASSY		USED ON		SIZE B DRAWING NO. 1008-0000-0030 REV 0	
		HOLES: DRILLED OR PUNCHED ± 1/32		APPLICATIONS		BURNED ± 1/32		SCALE: 1:6 WEIGHT: 24.75 lbs. SHEET 1 OF 1	