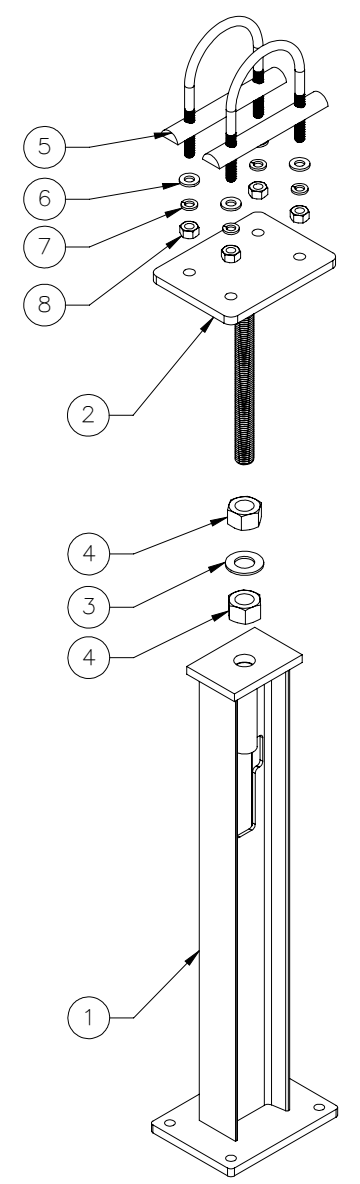
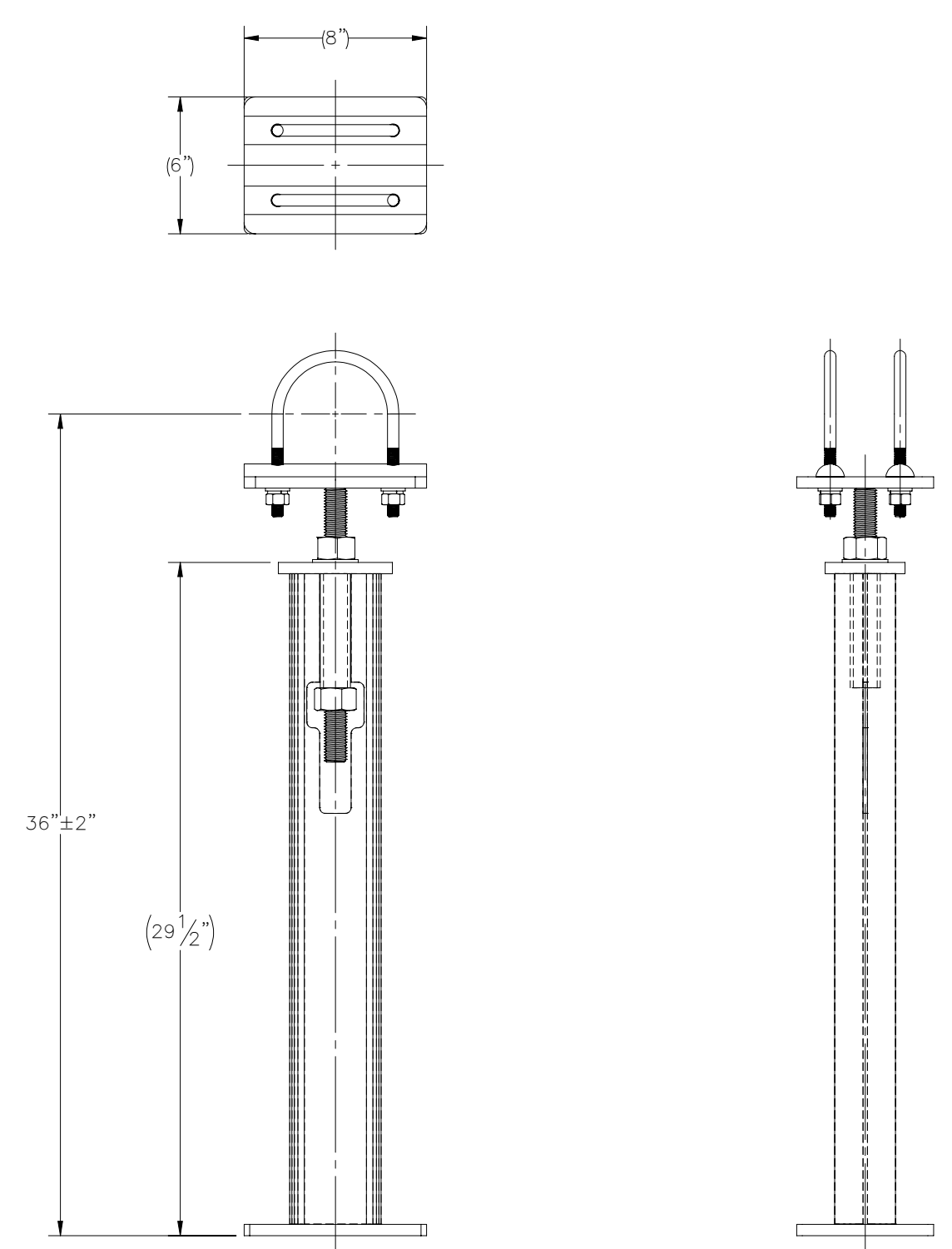

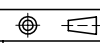


THE INFORMATION CONTAINED IN THIS DRAWING IS THE SOLE PROPERTY OF ELECTRO MECHANICAL INDUSTRIES, INC. ANY REPRODUCTION IN PART OR WHOLE WITHOUT THE WRITTEN PERMISSION OF ELECTRO MECHANICAL IND., IS PROHIBITED.



ITEM NO.	QTY REQD	PART NUMBER	DESCRIPTION	LENGTH	WEIGHT
1	1	W-002-252	STAND, PIPE JACK, WELDMENT		11.30
2	1	W-002-251	STAND, PIPE JACK ADJUSTMENT ROD FOR 4" PIPE		8.86
3	1	002-0FW-G009	WASHER, FLAT, 1.00", F436, GALV.		0.08
4	2	002-0NG-0008	NUT, HX, 1.00"-8UNC, GR 2H, GALV		0.42
5	2	002-00U-G030	4.00 PIPE ISOLATING U BOLT, .500-13 X 3.00 THD. LGTH. X 4.5625 ID X 6.8125 HT. GALV. WITH POLYSHRINK, HALF-ROUND I-ROD		2.02
6	4	002-0FW-G002	FW, .50, F436, HDG		0.02
7	4	002-0LW-G002	WASHER, SPLIT LOCK, .500", GALV		0.01
8	4	002-0NG-0010	NUT, HEX, .500-13UNC, GR 2H, GALV		0.06

SURFACE FINISH <input checked="" type="checkbox"/> UNLESS OTHERWISE SPECIFIED		UNLESS OTHERWISE SPECIFIED DIMENSIONS ARE IN INCHES		APPROVALS		DATE		 ELECTRO MECHANICAL INDUSTRIES, INC. 11230 NEESESHAW DRIVE HOUSTON, TEXAS 77065 1-800-453-0050	
MATERIAL SEE PARTS LIST		TOLERANCES .0 ± .06 .00 ± .015 .000 ± .005		DRAWN J. ROACH		10/18/2021			
THIRD ANGLE PROJECTION 		FRACTIONS ± 1/16		CHECKER B. HUTSON		10/18/2021			
NEXT ASSY		USED ON		ENGINEER J. Breen		10/18/2021			
APPLICATIONS		DRILLED OR PUNCHED ± 1/32		PRODUCTION J. Lee		10/18/2021			
		BURNED ± 1/32						SIZE B DRAWING NO. 1008-0000-0031 REV 0 SCALE: 1:7 WEIGHT: 25.53 lbs. SHEET 1 OF 1	