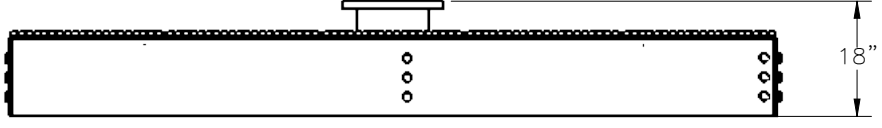
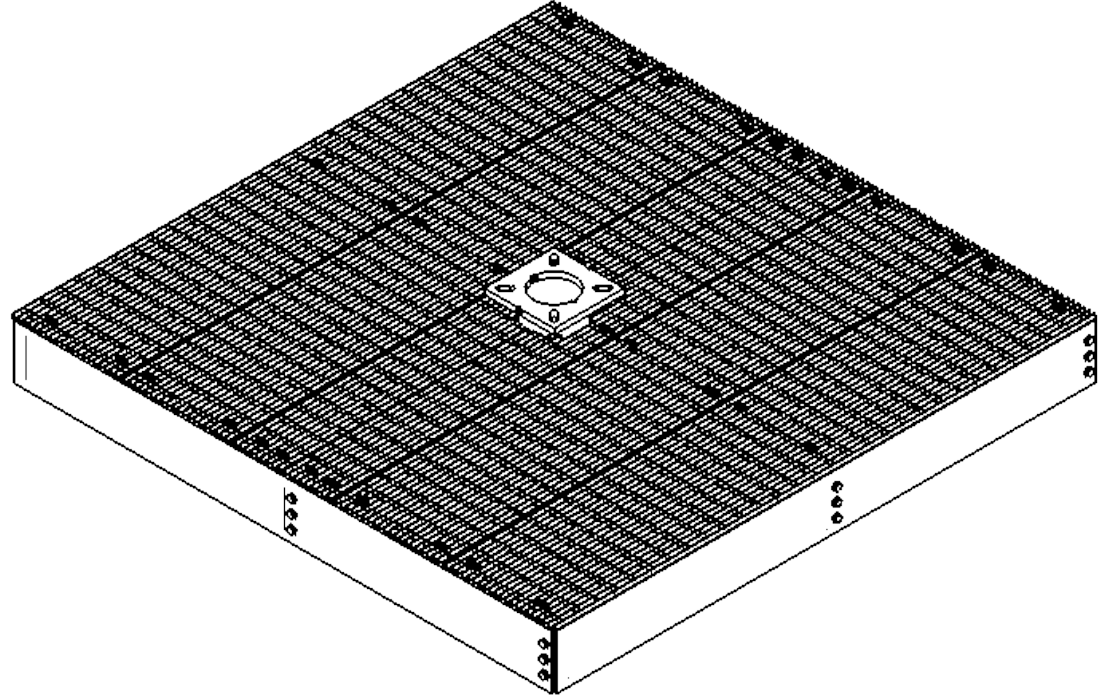
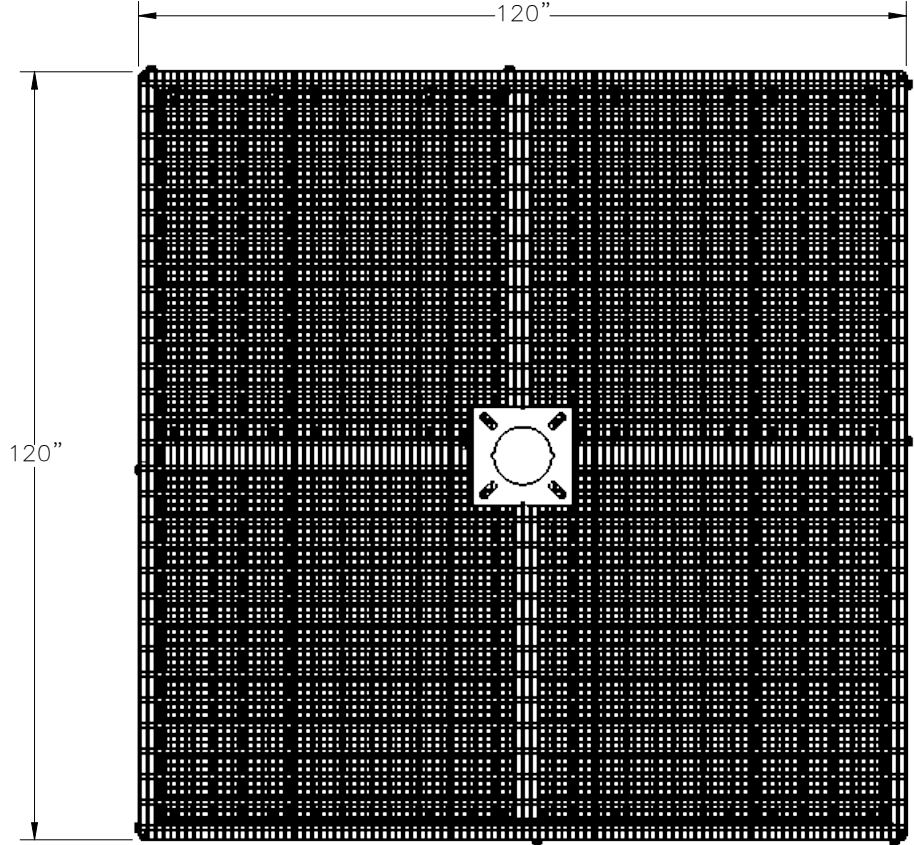


THE INFORMATION CONTAINED IN THIS DRAWING IS THE SOLE PROPERTY OF ELECTRO MECHANICAL INDUSTRIES, INC. ANY REPRODUCTION IN PART OR WHOLE WITHOUT THE WRITTEN PERMISSION OF ELECTRO MECHANICAL IND., IS PROHIBITED.


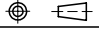
REVISIONS					
REV.	DCN #	DESCRIPTION	DATE	BY	APPROVED
2	01237	T010-0240-1194 WAS 450-000-0702-1194, T010-0357-0580 WAS 450-000-0703-0700, 002-0GC-G002 WAS 000-MSC-0008, 002-0BG-0085 WAS 002-0BG-R034, 002-0NG-0002 WAS 002-0FW-G003, NOTES ADDED FOR INTERIOR FILL AND 10% SPARE CLIPS, UPDATED WITH LOWER LEVEL CHANGES.	04/18/2023	JTR	JPB

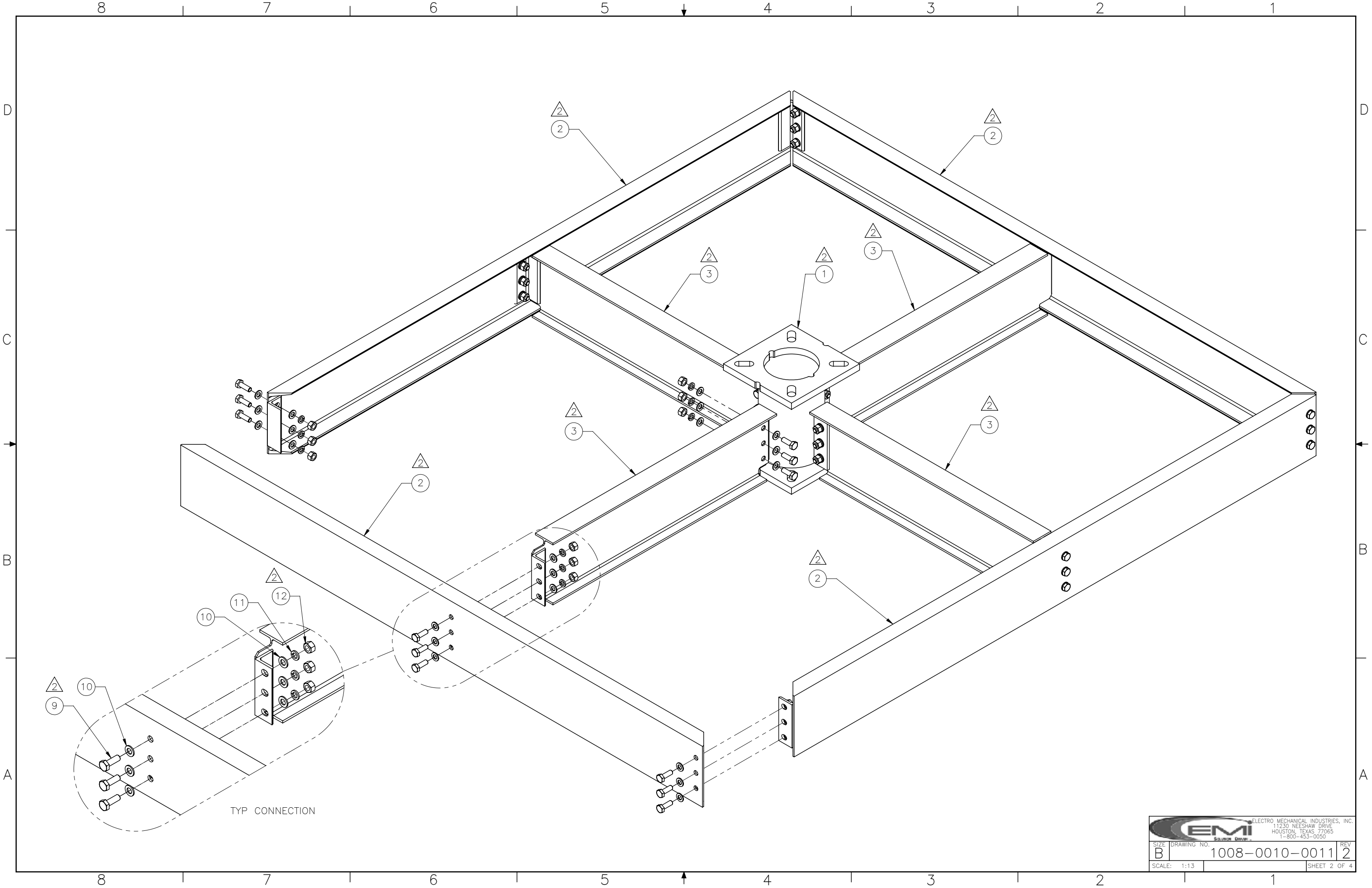



ITEM NO.	QTY	PART NUMBER	DESCRIPTION	LENGTH	WEIGHT
1	1	W-000-907	CENTER SUPPORT EXTENSION		
2	4	W-000-905	CHANNEL WELDMENT		207.83
3	4	W-000-906	BEAM WELDMENT		85.86
4	4	T010-0240-1194	GRATING PANEL, 1" THK, SMOOTH, 21 BAR, 23.9375" WIDTH	119 1/2"	140.9
5	4	T010-0357-0580	GRATING PANEL, 1" THK SMOOTH, 31 BAR, 35.8125" WIDTH	58"	100.8
6	4	P-002-250	GRATING PANEL, W/CUT		63.44
7	2	P-002-251	GRATING PANEL, W/CUT		64.0
8	38	002-0GC-G002	GRATE FAST CONNECTOR, 1.1875" BAR WIDTH, 3.25" BOLT		0.4
9	36	002-0BG-0085	BOLT, HH, .750-10 X 2.25, GALV, A325, PT X 1.375	2 1/4"	0.4606
10	72	002-0FW-G003	WASHER, FLAT, .750, GALV, F436		0.05
11	36	002-0LW-G003	WASHER, SPLIT LOCK, .750, GALV		0.04
12	36	002-0NG-0002	NUT, HEX, .750-10, GALV, GR 2H		0.189

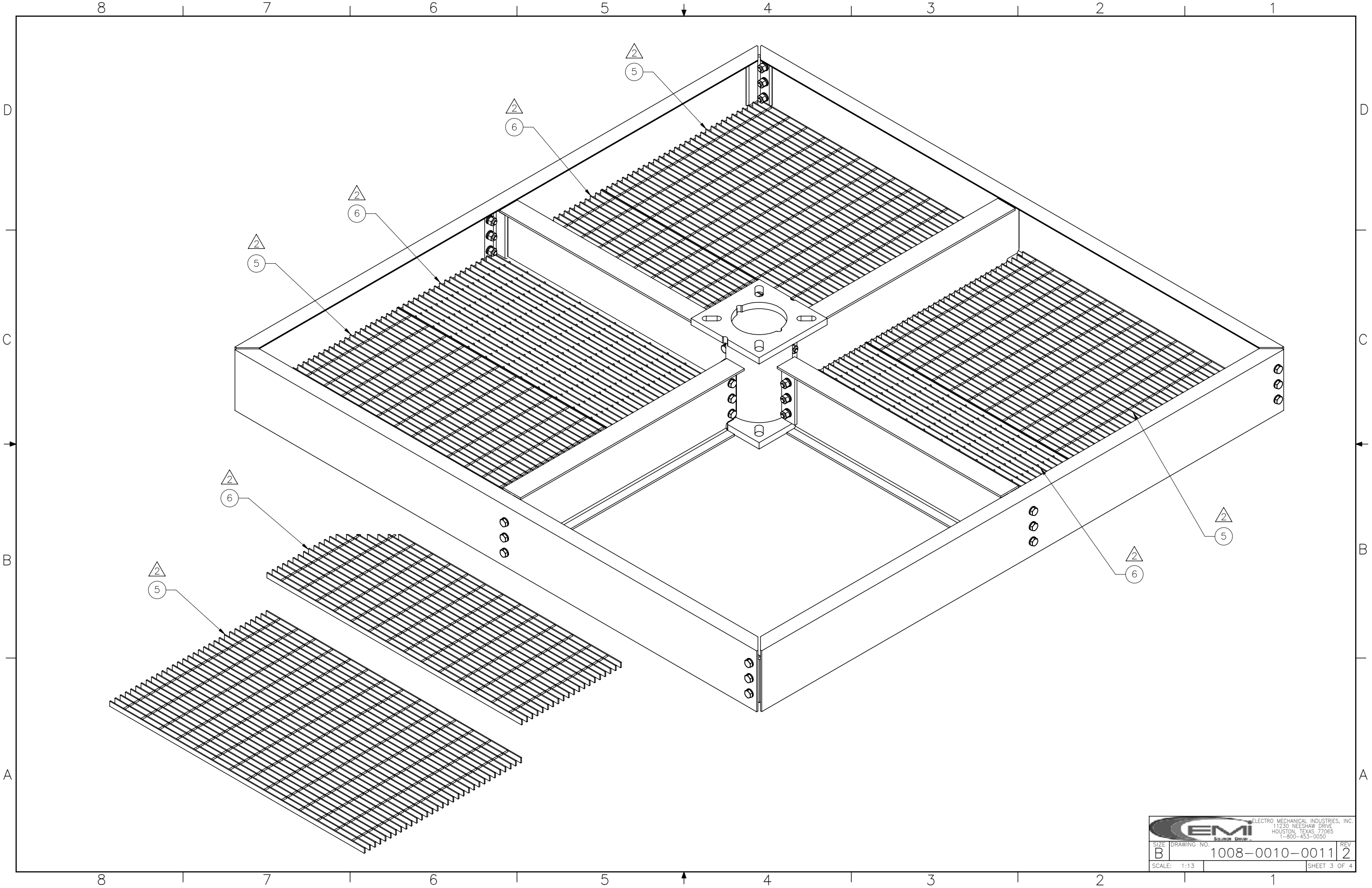
NOTES :
 1. INTERIOR TO BE FILLED WITH A MINIMUM OF 4,700 LBS. OF BALLAST BLOCKS OR ROCK NO LESS THAN 1" IN WIDTH.

INCLUDES 10% SPARE GRATING CLIPS.

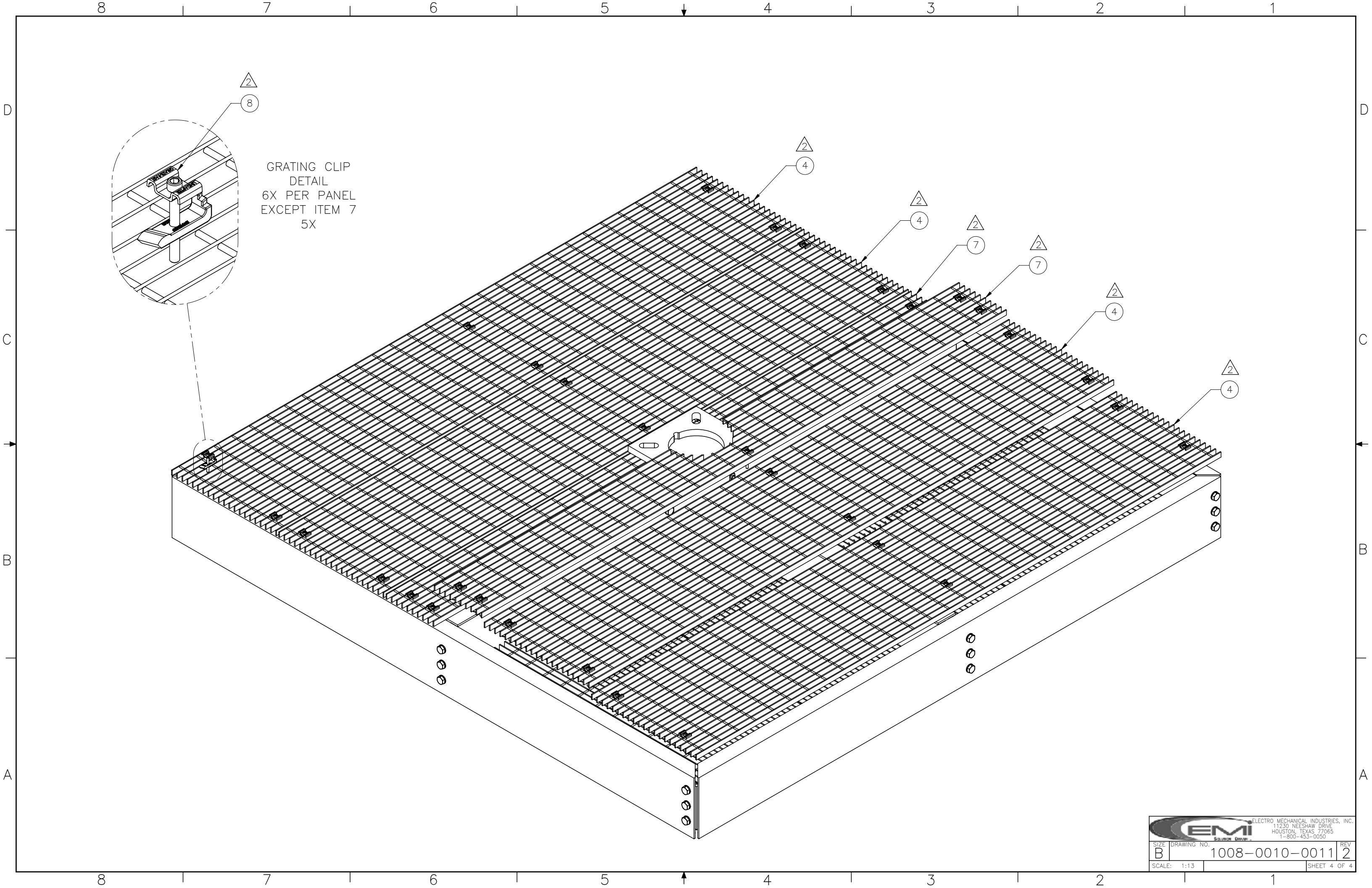
SURFACE FINISH <input checked="" type="checkbox"/> UNLESS OTHERWISE SPECIFIED		UNLESS OTHERWISE SPECIFIED DIMENSIONS ARE IN INCHES		APPROVALS		DATE		 ELECTRO MECHANICAL INDUSTRIES, INC. 11230 NEESEAW DRIVE HOUSTON, TEXAS 77065 1-800-453-0050	
MATERIAL SEE PARTS LIST		TOLERANCES .0 ±.06 .00 ±.015 .000 ±.005		DRAWN J. CRITELLI		6/8/2018			
THIRD ANGLE PROJECTION 		FRACTIONS ± 1/16		CHECKER J. BUSHMAN		6/8/2018		TITLE: 10' X 10' BALLAST FOUNDATION	
NEXT ASSY		ANGLES ± .25°		ENGINEER J. BUSHMAN		6/8/2018			
USED ON		HOLES: DRILLED OR PUNCHED ± 1/32 BURNED ± 1/32		PRODUCTION J. SUNDERLAND		6/8/2018		SIZE B DRAWING NO. 1008-0010-0011 REV 2	
APPLICATIONS				SCALE: 1:30		WEIGHT: 2750 lbs.		SHEET 1 OF 4	




 ELECTRO MECHANICAL INDUSTRIES, INC. 11230 NEESHAW DRIVE HOUSTON, TEXAS 77065 1-800-453-0050		REV
		2
SIZE	DRAWING NO.	REV
B	1008-0010-0011	2
SCALE: 1:13	SHEET 2 OF 4	



		ELECTRO MECHANICAL INDUSTRIES, INC. 11230 NEESHAW DRIVE HOUSTON, TEXAS 77065 1-800-453-0050	
SIZE	DRAWING NO.	REV	
B	1008-0010-0011	2	
SCALE: 1:13	SHEET 3 OF 4		



		ELECTRO MECHANICAL INDUSTRIES, INC. 11230 NEESHAW DRIVE HOUSTON, TEXAS 77065 1-800-453-0050	
SIZE	DRAWING NO.	REV	
B	1008-0010-0011	2	
SCALE: 1:13			SHEET 4 OF 4