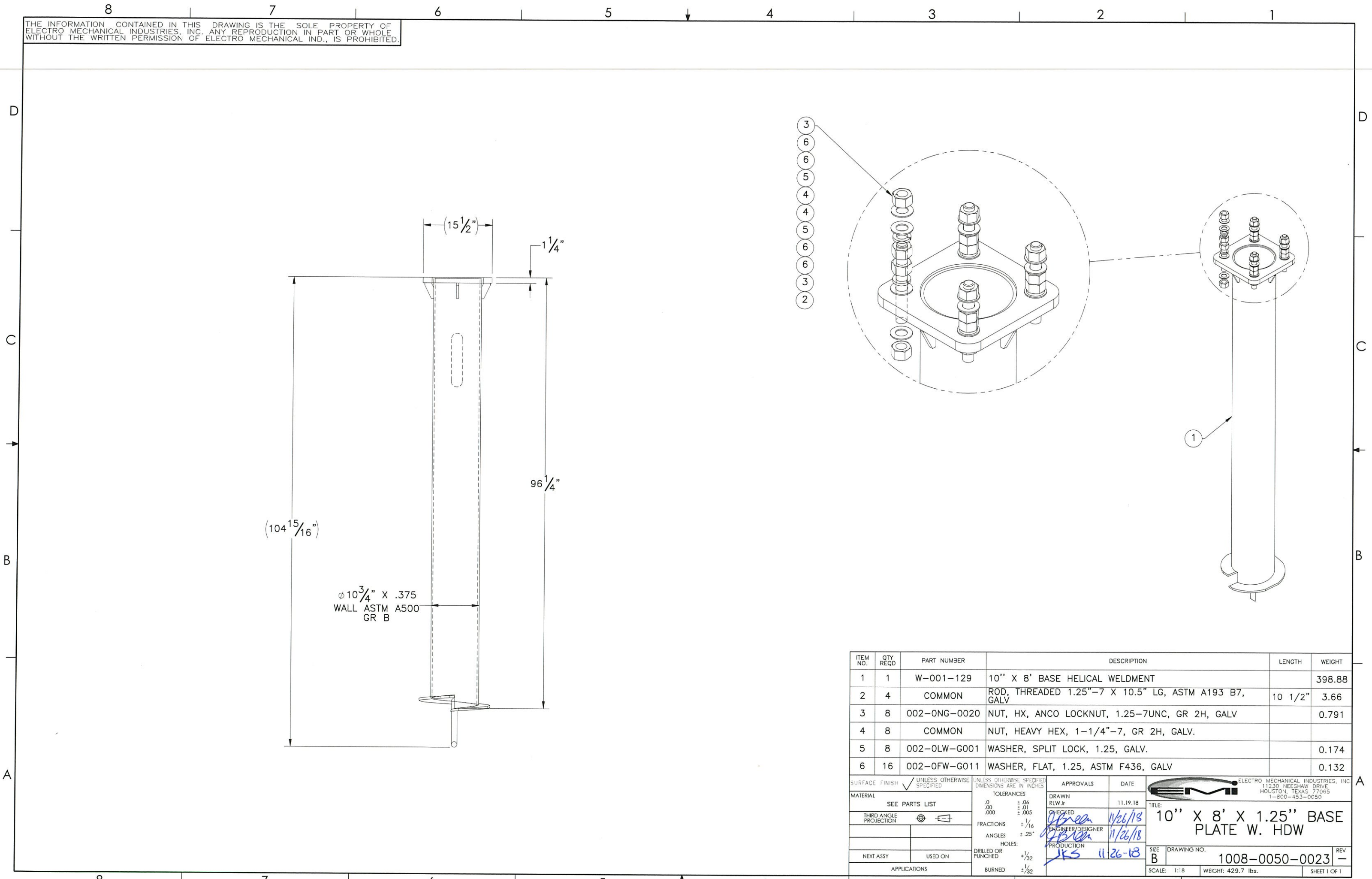

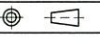


THE INFORMATION CONTAINED IN THIS DRAWING IS THE SOLE PROPERTY OF ELECTRO MECHANICAL INDUSTRIES, INC. ANY REPRODUCTION IN PART OR WHOLE WITHOUT THE WRITTEN PERMISSION OF ELECTRO MECHANICAL IND., IS PROHIBITED.



ITEM NO.	QTY REQD	PART NUMBER	DESCRIPTION	LENGTH	WEIGHT
1	1	W-001-129	10" X 8' BASE HELICAL WELDMENT		398.88
2	4	COMMON	ROD, THREADED 1.25"-7 X 10.5" LG, ASTM A193 B7, GALV	10 1/2"	3.66
3	8	002-ONG-0020	NUT, HX, ANCO LOCKNUT, 1.25-7UNC, GR 2H, GALV		0.791
4	8	COMMON	NUT, HEAVY HEX, 1-1/4"-7, GR 2H, GALV.		
5	8	002-OLW-G001	WASHER, SPLIT LOCK, 1.25, GALV.		0.174
6	16	002-OFW-G011	WASHER, FLAT, 1.25, ASTM F436, GALV		0.132

SURFACE FINISH <input checked="" type="checkbox"/> UNLESS OTHERWISE SPECIFIED		UNLESS OTHERWISE SPECIFIED DIMENSIONS ARE IN INCHES		APPROVALS	DATE	 ELECTRO MECHANICAL INDUSTRIES, INC. 11230 NEECHAW DRIVE HOUSTON, TEXAS 77065 1-800-453-0050
MATERIAL	SEE PARTS LIST	TOLERANCES		DRAWN	11.19.18	
THIRD ANGLE PROJECTION		.0 ± .06 .000 ± .01 FRACTIONS ± 1/16 ANGLES ± .25°		CHECKED	11/26/18	TITLE: <b>10" X 8' X 1.25" BASE PLATE W. HDW</b>
NEXT ASSY	USED ON	HOLES: DRILLED OR PUNCHED ± 1/32 BURNED ± 1/32		ENGINEER/DISIGNER	11/26/18	
APPLICATIONS				PRODUCTION	11-26-18	SIZE B DRAWING NO. 1008-0050-0023 REV - SCALE: 1:18 WEIGHT: 429.7 lbs. SHEET 1 OF 1