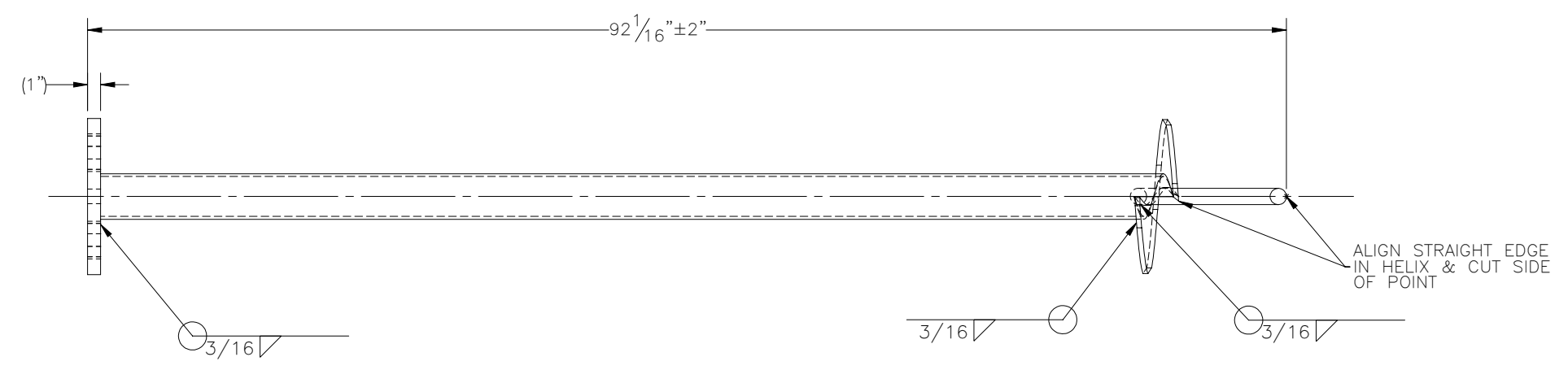
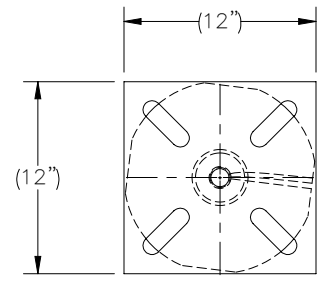
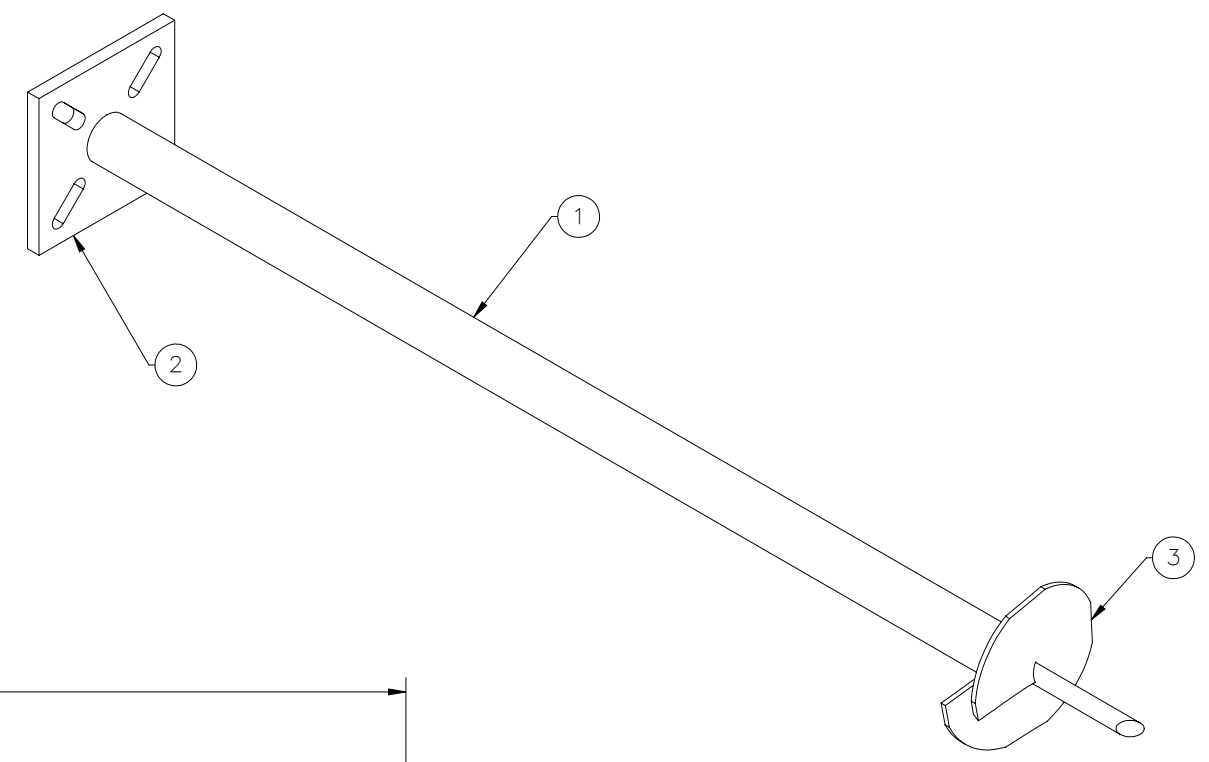


THE INFORMATION CONTAINED IN THIS DRAWING IS THE SOLE PROPERTY OF ELECTRO MECHANICAL INDUSTRIES, INC. ANY REPRODUCTION IN PART OR WHOLE WITHOUT THE WRITTEN PERMISSION OF ELECTRO MECHANICAL IND., IS PROHIBITED.



ITEM NO.	QTY REQD	PART NUMBER	DESCRIPTION	LENGTH	WEIGHT
1	1	P-006-904	3" X 7', HELICAL SHAFT	82 3/8"	51.1
2	1	P-006-905	TOP PLATE	12"	36.2
3	1	W-001-970	6" HELICAL FLIGHT/PIER POINT WELDMENT		15.13

SURFACE FINISH	UNLESS OTHERWISE SPECIFIED	UNLESS OTHERWISE SPECIFIED	UNLESS OTHERWISE SPECIFIED	APPROVALS	DATE
MATERIAL	SEE PARTS LIST	TOLERANCES		DRAWN	8/25/2023
THIRD ANGLE PROJECTION		.0 ± .06		CHECKER	8/29/2023
		.00 ± .015		ENGINEER	8/29/2023
		.000 ± .005		PRODUCTION	8/29/2023
		FRACTIONS ± 1/16		J. KERNER	
		ANGLES ± .25°			
NEXT ASSY	USED ON	HOLES:			
		DRILLED OR PUNCHED			
		BURNED			
APPLICATIONS					

TITLE:		ELECTRO MECHANICAL INDUSTRIES, INC. 11230 NEESHAW DRIVE HOUSTON, TEXAS 77065 1-800-453-0050	
3" X 7' HELICAL, 1" BASE, NO HDW		SIZE	REV
DRAWING NO. 1008-0050-0051		B	0
SCALE: 1:12	WEIGHT: 102.5 lbs.	SHEET 1 OF 1	

- NOTES:
UNLESS OTHERWISE SPECIFIED,
- ALL WELDING PER AWS D1.1, FCAW, E7XT-1 AND GMAW, ER70S-6 ELECTRODES.
 - SQUARENESS OF WELDED COMPONENTS TO BE WITHIN $\pm 1/16$ ".
 - ALL WELDS 3/16" FILLET OR SEAM WELDS ALL AROUND AS APPLICABLE PER JOINT.
 - ALL CAPTIVE TUBES MUST HAVE MIN. TWO WEEP HOLES (ONE UPPER, ONE LOWER) 7/16" DIA.
 - GALVANIZE PER ASTM A123.