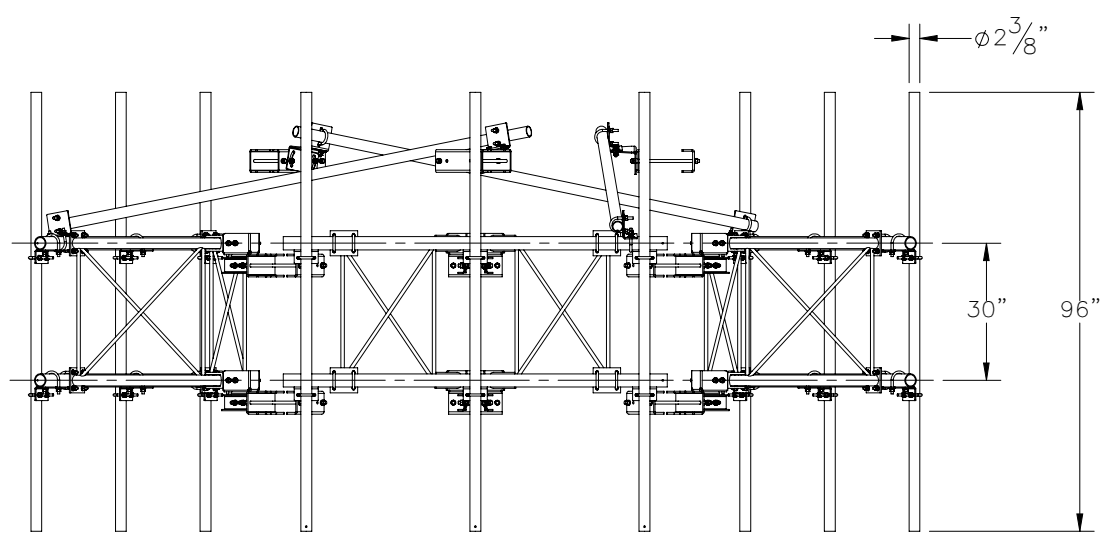
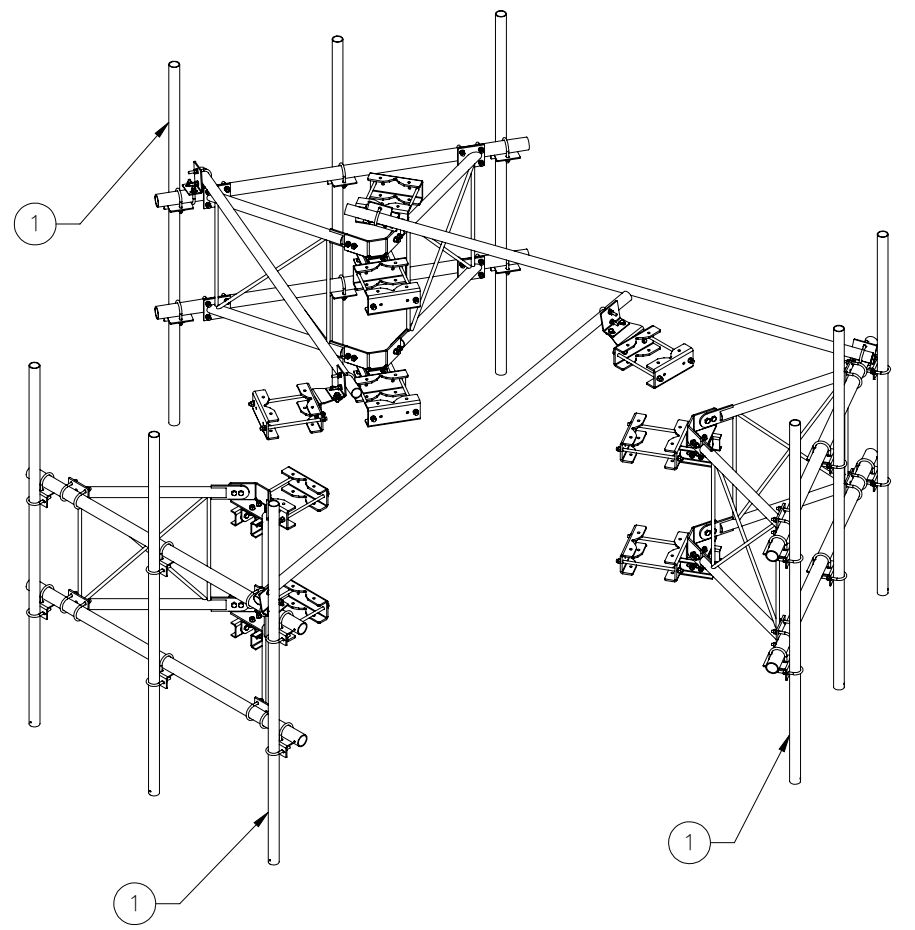
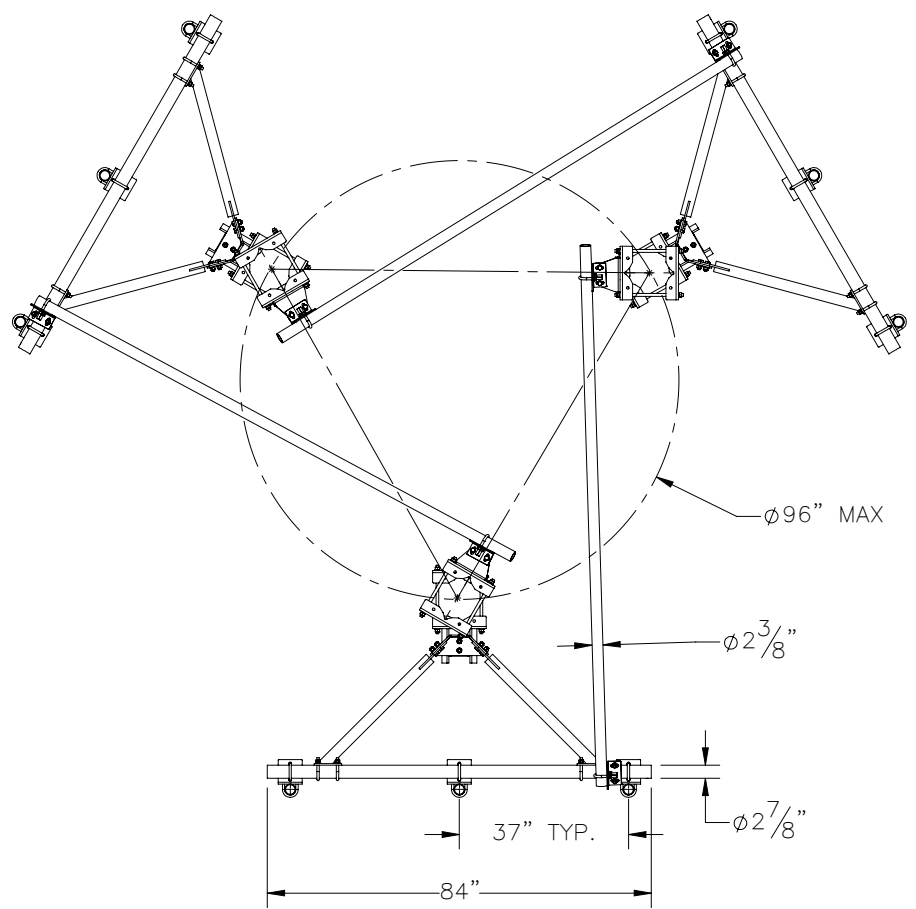



THE INFORMATION CONTAINED IN THIS DRAWING IS THE SOLE PROPERTY OF ELECTRO MECHANICAL INDUSTRIES, INC. ANY REPRODUCTION IN PART OR WHOLE WITHOUT THE WRITTEN PERMISSION OF ELECTRO MECHANICAL IND., IS PROHIBITED.



ITEM NO.	QTY REQD	PART NUMBER	DESCRIPTION	LENGTH	WEIGHT	
1	3	1012-0010-1331	SECTOR FRAME, 7' X 8' SINGLE FACE, 3 VERT. ANTENNA SUPPORTS		467.97	
SURFACE FINISH		UNLESS OTHERWISE SPECIFIED	UNLESS OTHERWISE SPECIFIED DIMENSIONS ARE IN INCHES	APPROVALS	DATE	
MATERIAL		SEE PARTS LIST	TOLERANCES	DRAWN	2/28/2023	
THIRD ANGLE PROJECTION			.0 ± .06 .00 ± .015 .000 ± .005	CHECKER	2/28/2023	
NEXT ASSY		USED ON	FRACTIONS ± 1/16 ANGLES ± .25°	ENGINEER	2/28/2023	
APPLICATIONS			HOLES: DRILLED OR PUNCHED ± 1/32 BURNED ± 1/32	PRODUCTION	2/28/2023	
			 ELECTRO MECHANICAL INDUSTRIES, INC. 11230 NEESESHAW DRIVE HOUSTON, TEXAS 77065 1-800-453-0050		TITLE: SECTOR FRAME, 7' X 8' TRI-FACE, 3 VERT. ANTENNA SUPPORTS	
			SIZE	DRAWING NO.	REV	
			B	1012-0030-1331	0	
			SCALE: 1:42	WEIGHT: 1403.92 lbs.	SHEET 1 OF 1	