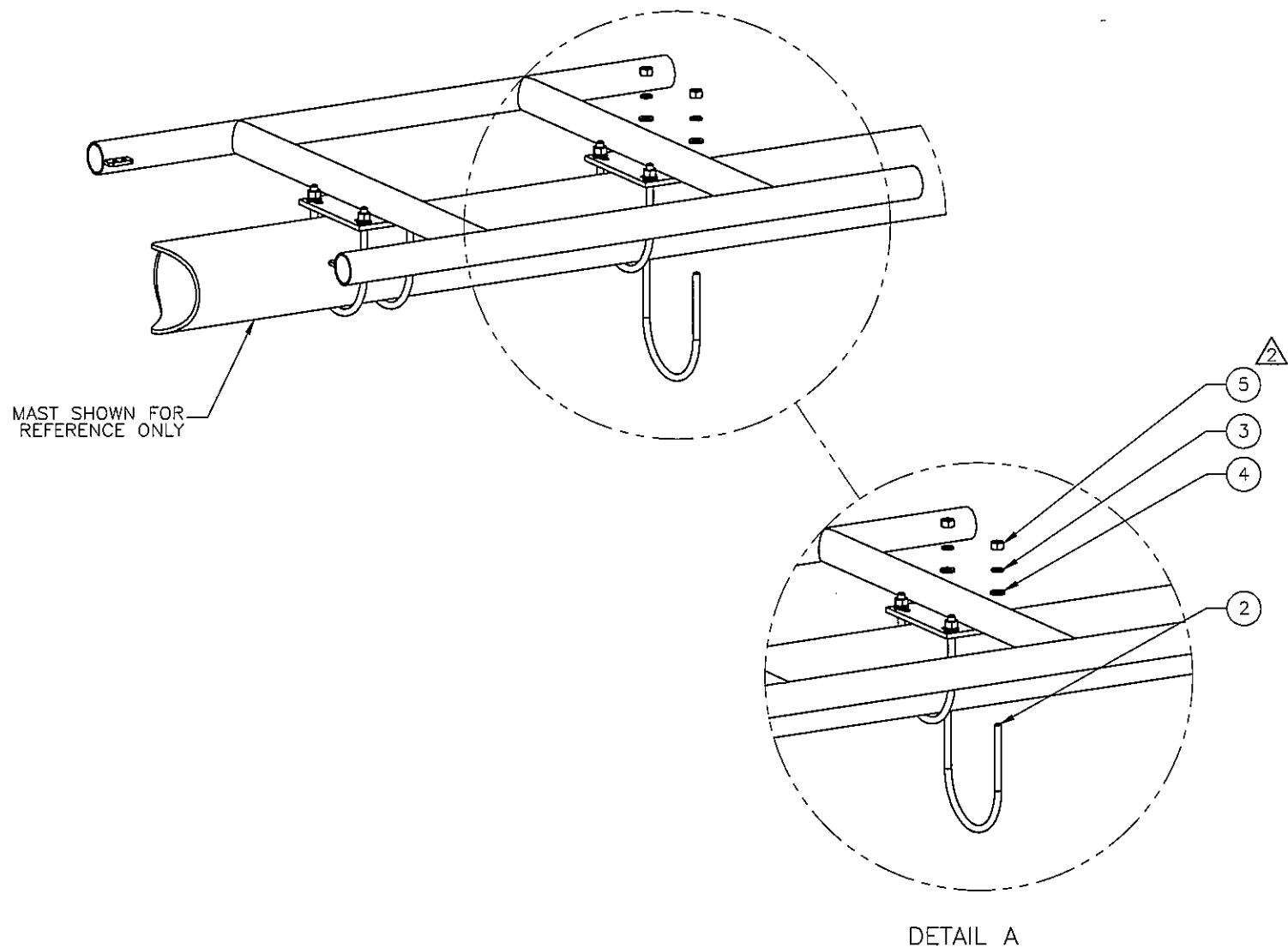
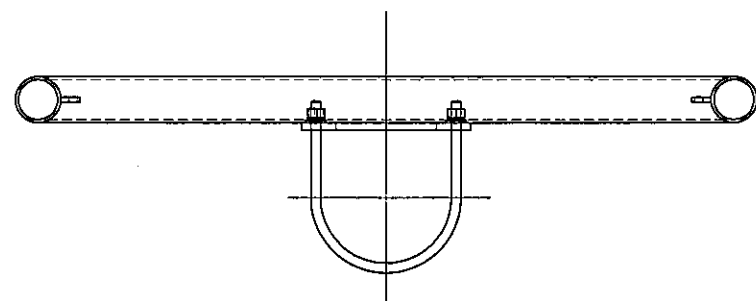
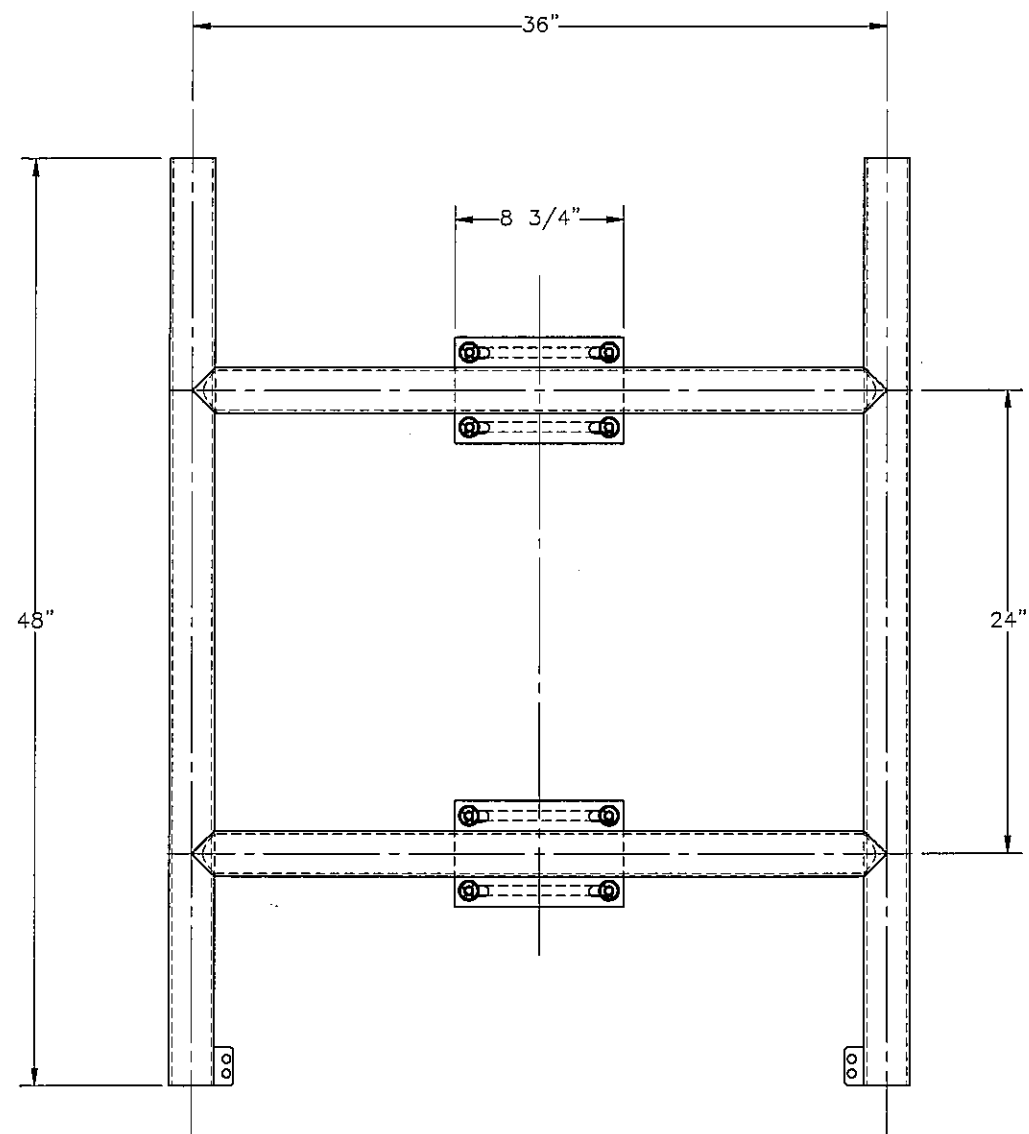




THE INFORMATION CONTAINED IN THIS DRAWING IS THE SOLE PROPERTY OF ELECTRO MECHANICAL INDUSTRIES, INC. ANY REPRODUCTION IN PART OR WHOLE WITHOUT THE WRITTEN PERMISSION OF ELECTRO MECHANICAL IND., IS PROHIBITED.

REVISIONS					
REV.	DCN #	DESCRIPTION	DATE	BY	APPROVED
2	DCN00871	ADDED NUTS (002-ONG-0010)	6.16.2020	JGC	JPB



ITEM NO.	QTY REQD	PART NUMBER	DESCRIPTION
1	1	W-000-190	ANTENNA H-FRAME
2	4	002-00U-G008	U-BOLT, .500-13 X 8.375" LG, 6.75" WD, GALV
3	8	002-0LW-G002	WASHER, SPLIT LOCK, .500", GALV
4	8	002-0FW-G002	WASHER, FLAT, .500", F436, GALV
5	8	002-ONG-0010	NUT, HEX, .500-13UNC, GR 2H, GALV

SURFACE FINISH <input checked="" type="checkbox"/> UNLESS OTHERWISE SPECIFIED		UNLESS OTHERWISE SPECIFIED DIMENSIONS ARE IN INCHES		APPROVALS		DATE		 ELECTRO MECHANICAL INDUSTRIES, INC. 11230 NEESHAW DRIVE HOUSTON, TEXAS 77065 1-200-453-0050	
MATERIAL SEE PARTS LIST		TOLERANCES		DRAWN T. PETERS		9.9.16			
THIRD ANGLE PROJECTION 		FRACTIONS ± 1/16		CHECKED C.S.		9.9.16		ENGINEER/DESIGNER C.S. 9.9.16 PRODUCTION J.C. 9.9.16	
NEXT ASSY USED ON		ANGLES ± .25°		Holes:		SIZE DRAWING NO.			
APPLICATIONS		DRILLED OR PUNCHED + 1/32		BURNED + 1/32		B		1015-0000-0017 2	
		SCALE: 1:10		WEIGHT: 65.79 lbs.		SHEET 1 OF 1			