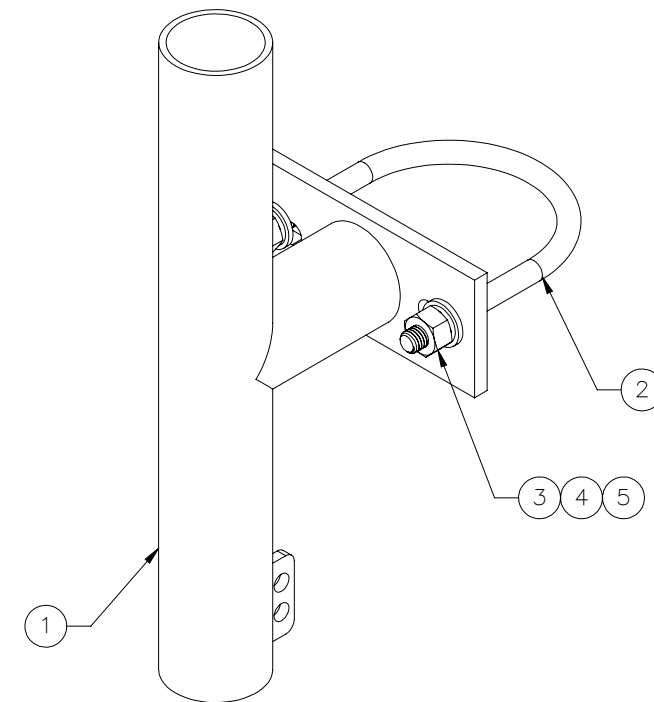
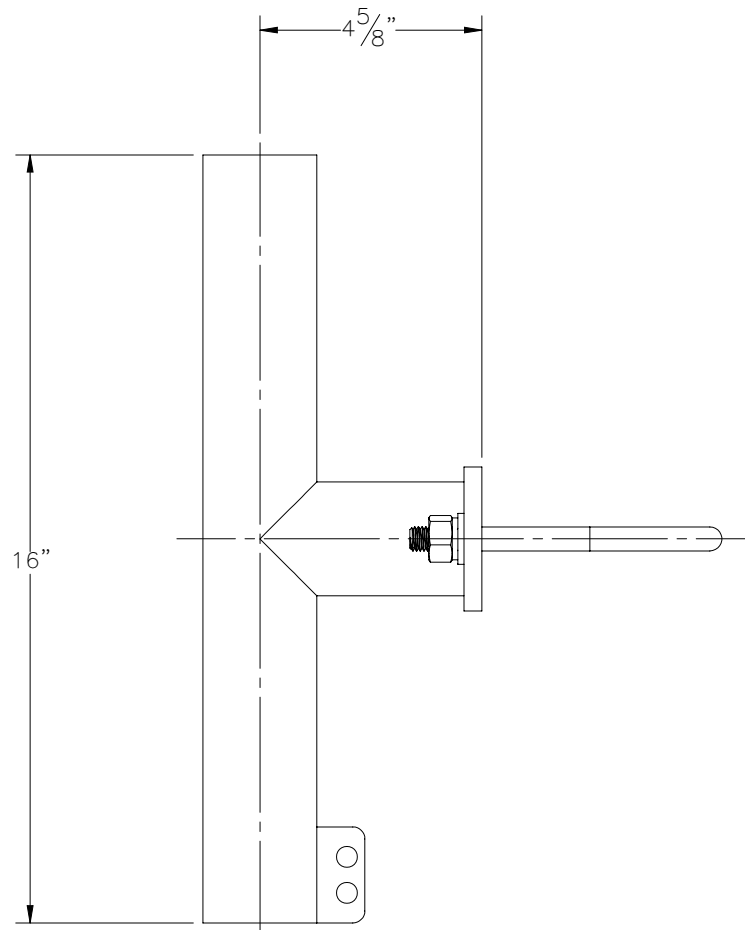
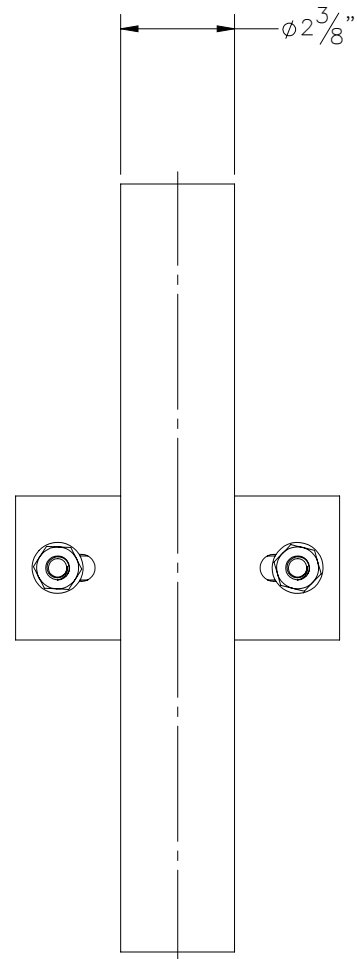

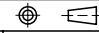


THE INFORMATION CONTAINED IN THIS DRAWING IS THE SOLE PROPERTY OF ELECTRO MECHANICAL INDUSTRIES, INC. ANY REPRODUCTION IN PART OR WHOLE WITHOUT THE WRITTEN PERMISSION OF ELECTRO MECHANICAL IND., IS PROHIBITED.



ITEM NO.	QTY REQD	PART NUMBER	DESCRIPTION	LENGTH	WEIGHT
1	1	W-002-405	MIDMAST ANTENNA MOUNT FRAME		8.04
2	1	002-00U-G028	U-BOLT, .500-13 X 1.5 THD LNG., 4.50 I.D. X 6 HT, GALV		0.105
3	2	002-0NG-0010	NUT, HEX, .500-13UNC, GR 2H, GALV		0.06
4	2	002-0LW-G002	WASHER, SPLIT LOCK, .500", GALV		0.01
5	2	002-0FW-G002	FW, .50, F436, HDG		0.02

SURFACE FINISH <input checked="" type="checkbox"/> UNLESS OTHERWISE SPECIFIED		UNLESS OTHERWISE SPECIFIED DIMENSIONS ARE IN INCHES		APPROVALS	DATE	 ELECTRO MECHANICAL INDUSTRIES, INC. 11230 NEESESHAW DRIVE HOUSTON, TEXAS 77065 1-800-453-0050
MATERIAL SEE PARTS LIST		TOLERANCES		DRAWN C. SANCHEZ	7/6/2022	
THIRD ANGLE PROJECTION 		.0 ±.06 .00 ±.015 .000 ±.005		CHECKER J. Breen	7/6/2022	TITLE: MID-MAST ANTENNA MOUNT, P4
		FRACTIONS ± 1/16		ENGINEER J. Breen	7/6/2022	
		ANGLES ± .25°		PRODUCTION J. LEE	7/6/2022	
NEXT ASSY USED ON		HOLES: DRILLED OR PUNCHED ± 1/32				SIZE B
APPLICATIONS		BURNED ± 1/32				DRAWING NO. 1015-0000-0055
						REV 0
				SCALE: 1:4		WEIGHT: 8.34 lbs.
						SHEET 1 OF 1