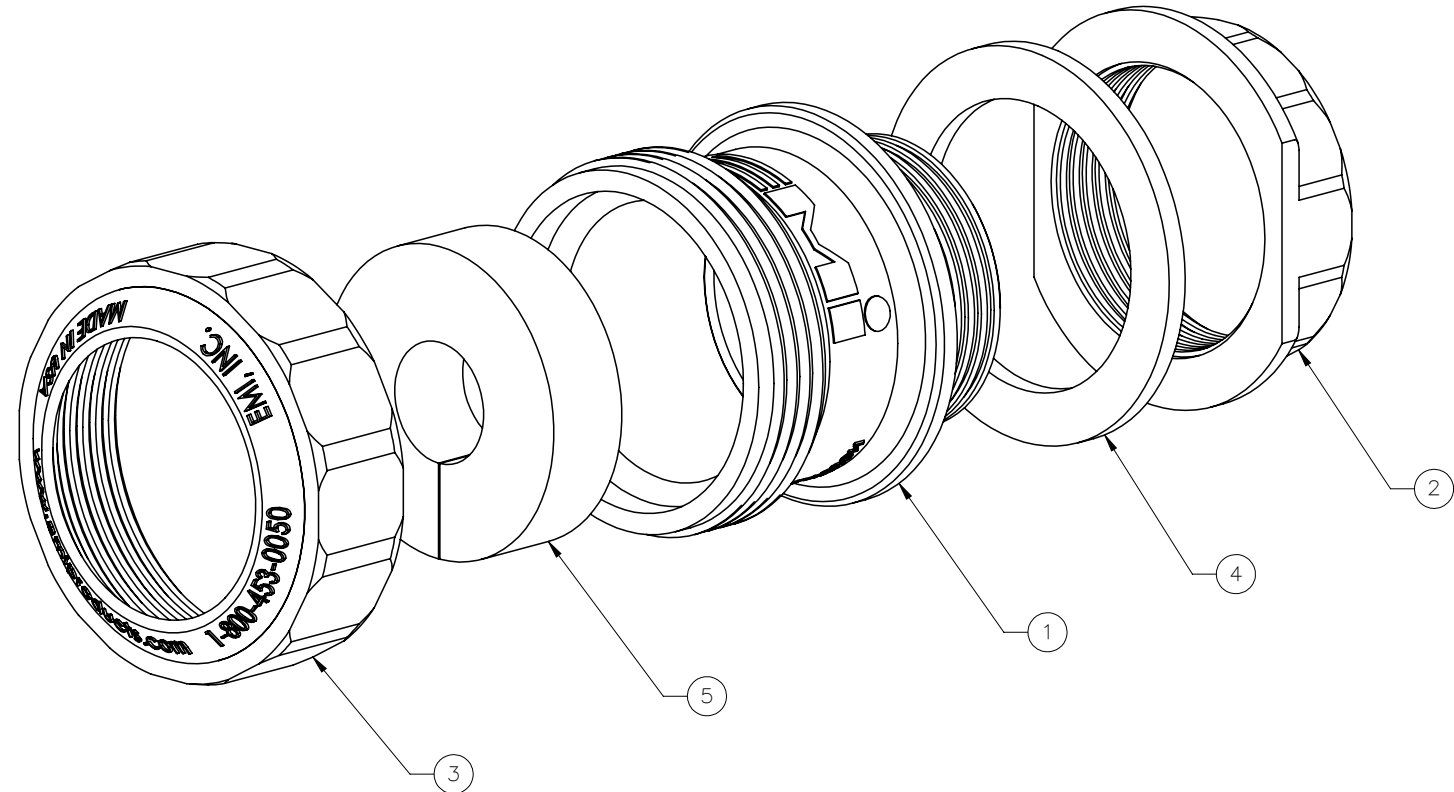
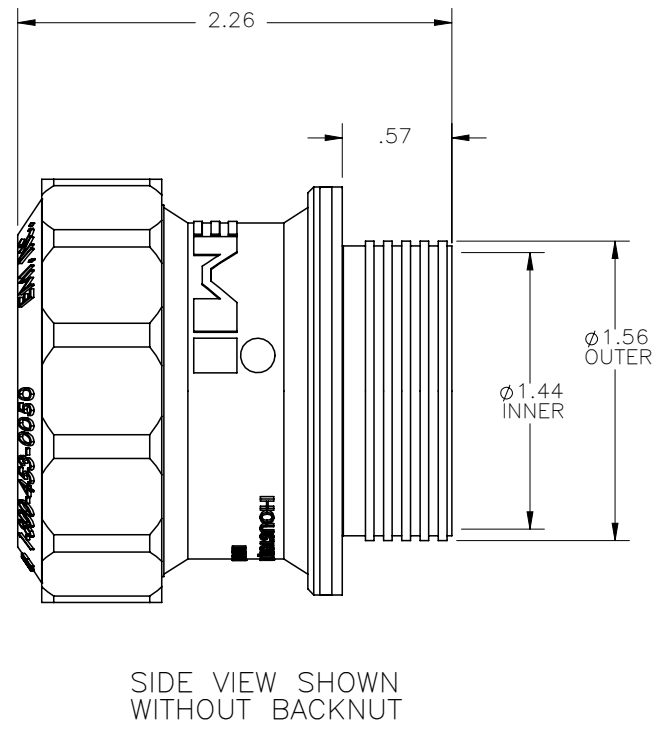
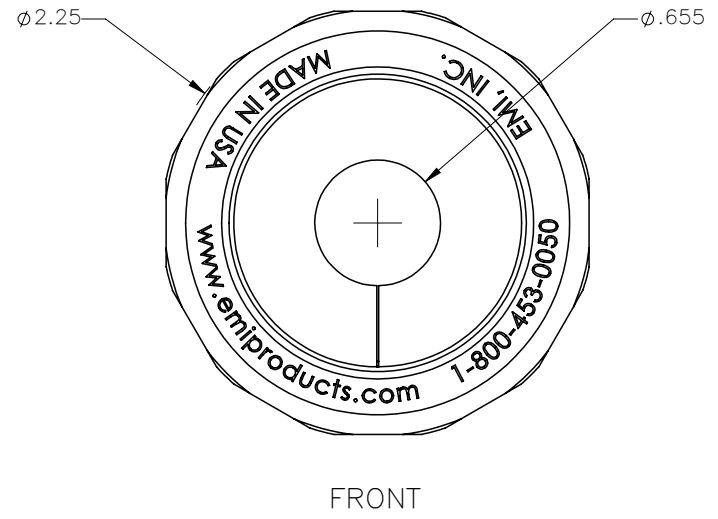


THE INFORMATION CONTAINED IN THIS DRAWING IS THE SOLE PROPERTY OF ELECTRO MECHANICAL INDUSTRIES, INC. ANY REPRODUCTION IN PART OR WHOLE WITHOUT THE WRITTEN PERMISSION OF ELECTRO MECHANICAL IND., IS PROHIBITED.



ITEM NO.	QTY REQD	PART NUMBER	DESCRIPTION	LENGTH	WEIGHT
1	1	310-900-2459	320 SERIES BODY		22.66
2	1	310-900-2460	320 SERIES BACK NUT		0.02
3	1	310-900-2037	320 SERIES CAP		0.02
4	1	310-900-2166	320 SERIES GASKET		0.01
5	1	P-001-096	GROMMET, 320 SERIES, .655 DIA. HOLE		0.04

SURFACE FINISH <input checked="" type="checkbox"/> UNLESS OTHERWISE SPECIFIED		UNLESS OTHERWISE SPECIFIED DIMENSIONS ARE IN INCHES		APPROVALS		DATE	
MATERIAL SEE PARTS LIST		TOLERANCES .0 ± .06 .00 ± .01 .000 ± .005		DRAWN C. SANCHEZ		11.8.16	
THIRD ANGLE PROJECTION		FRACTIONS ± 1/16 ANGLES ± .25°		CHECKED		TITLE: 320 SERIES PORTAL ENTRY, .655 DIA. HOLE GROMMET	
NEXT ASSY		USED ON		ENGINEER/DESIGNER		SIZE B	
APPLICATIONS		DRILLED OR PUNCHED ± 1/32 BURNED ± 1/32		PRODUCTION		DRAWING NO. 1017-0060-0001	
				SCALE: 1:1		WEIGHT: 0.149 lbs.	
						REV -	
						SHEET 1 OF 1	

STANDARD PLUG(S) INCLUDED WHEN APPROPRIATE

