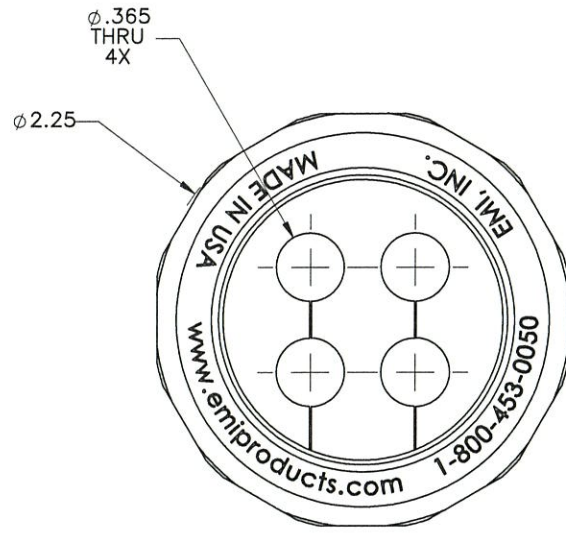
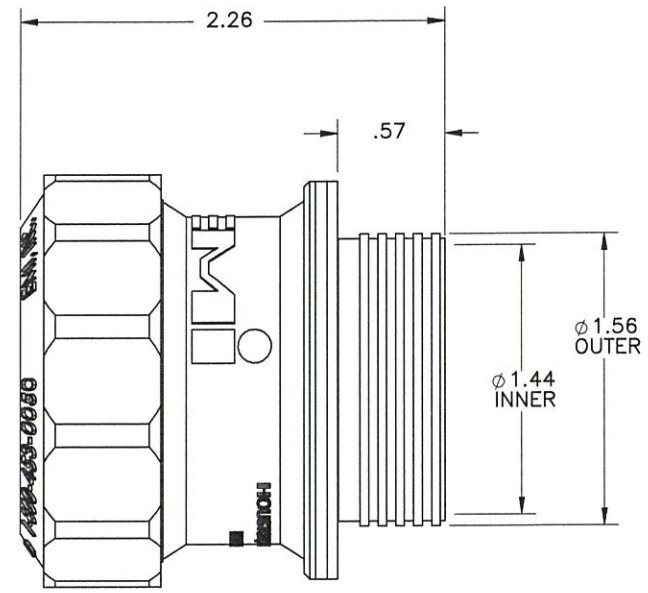


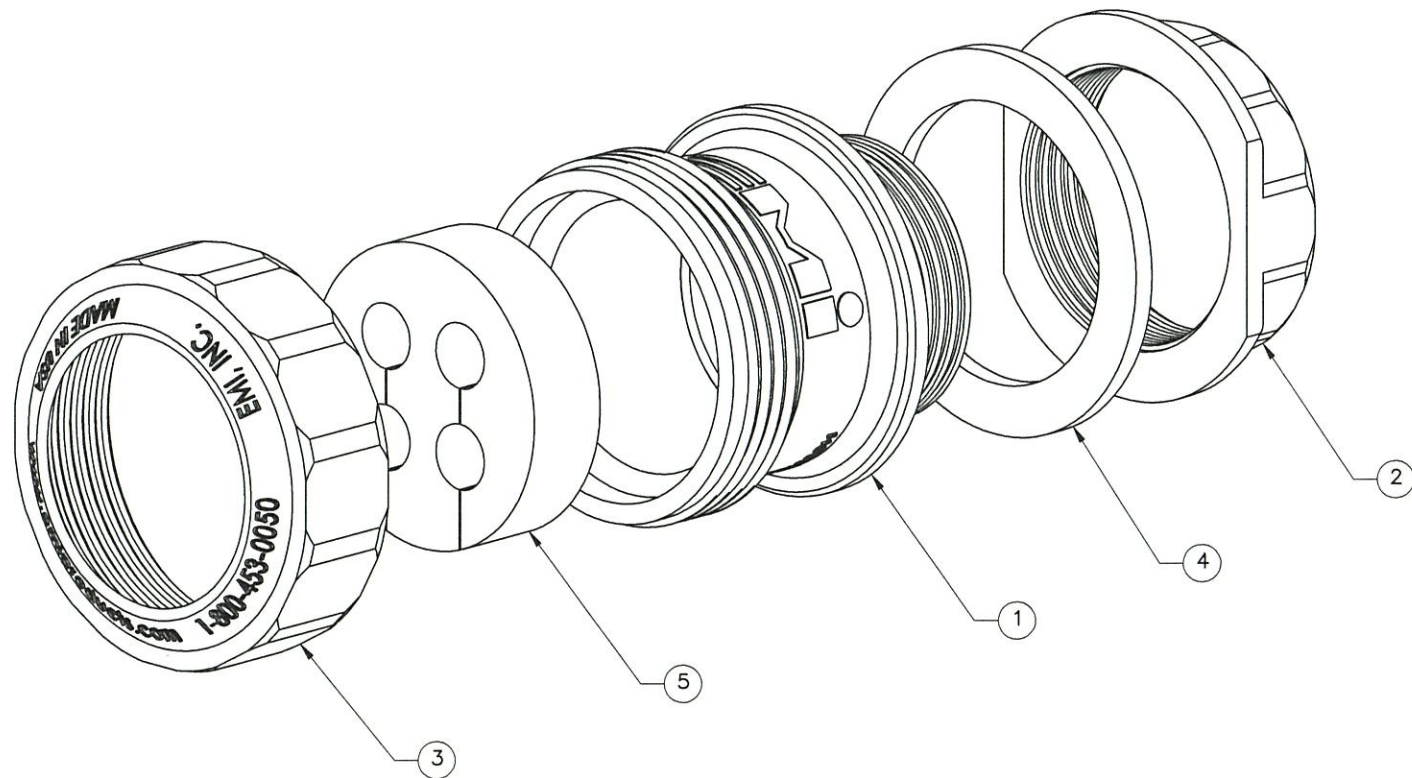
THE INFORMATION CONTAINED IN THIS DRAWING IS THE SOLE PROPERTY OF ELECTRO MECHANICAL INDUSTRIES, INC. ANY REPRODUCTION IN PART OR WHOLE WITHOUT THE WRITTEN PERMISSION OF ELECTRO MECHANICAL IND., IS PROHIBITED.




FRONT



SIDE VIEW SHOWN WITHOUT BACKNUT



ITEM NO.	QTY REQD	PART NUMBER	DESCRIPTION	LENGTH	WEIGHT
1	1	310-900-2459	320 SERIES BODY		22.66
2	1	310-900-2460	320 SERIES BACK NUT		0.02
3	1	310-900-2037	320 SERIES CAP		0.02
4	1	310-900-2166	320 SERIES GASKET		0.01
5	1	P-001-101	GROMMET, 320 SERIES, (4) HOLE .365" DIA.	1.69	0.04

SURFACE FINISH <input checked="" type="checkbox"/> UNLESS OTHERWISE SPECIFIED		UNLESS OTHERWISE SPECIFIED DIMENSIONS ARE IN INCHES		APPROVALS	DATE	 ELECTRO MECHANICAL INDUSTRIES, INC. 11230 NEESEHAW DRIVE HOUSTON, TEXAS 77065 1-800-453-0050
MATERIAL SEE PARTS LIST		TOLERANCES		DRAWN J. CRIELLI	11.17.16	
THIRD ANGLE PROJECTION 		.0 ± .06 .000 ± .01 .000 ± .005		CHECKED <i>CJS</i>	11.18.16	
NEXT ASSY USED ON		FRACTIONS ± 1/16 ANGLES ± .25° HOLES: DRILLED OR PUNCHED +1/32 BURNED ± 1/32		ENGINEER/DESIGNER <i>P.C.</i>	11.16.16	
APPLICATIONS				PRODUCTION <i>JAS</i>	11-16-16	TITLE: 320 SERIES PORTAL ENTRY, (4) HOLE .365 DIA. GROMMET SIZE B DRAWING NO. 1017-0060-0002 REV - SCALE: 1:1 WEIGHT: 0.147 lbs. SHEET 1 OF 1