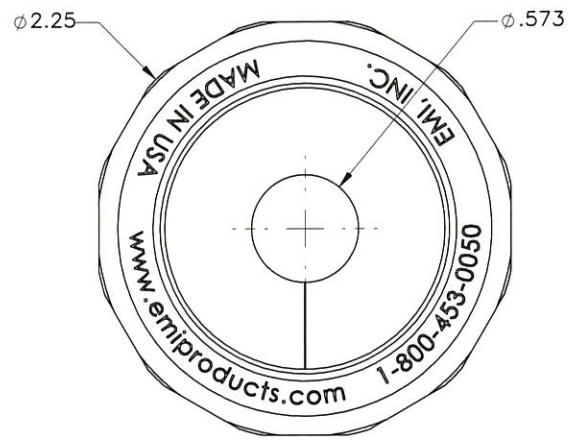
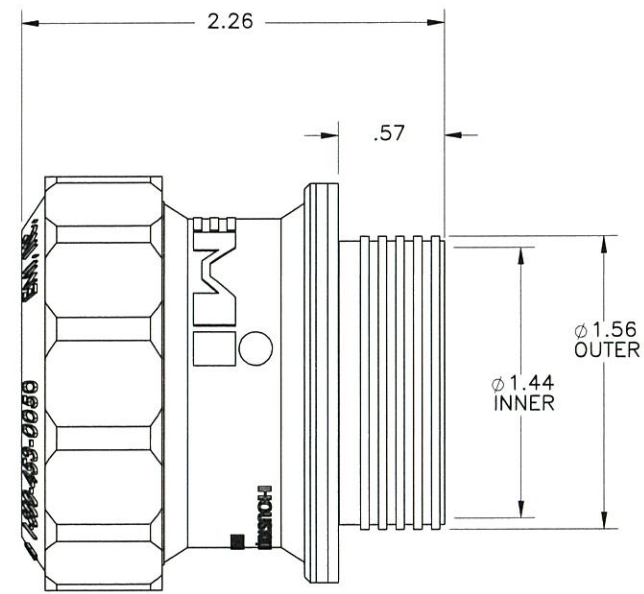


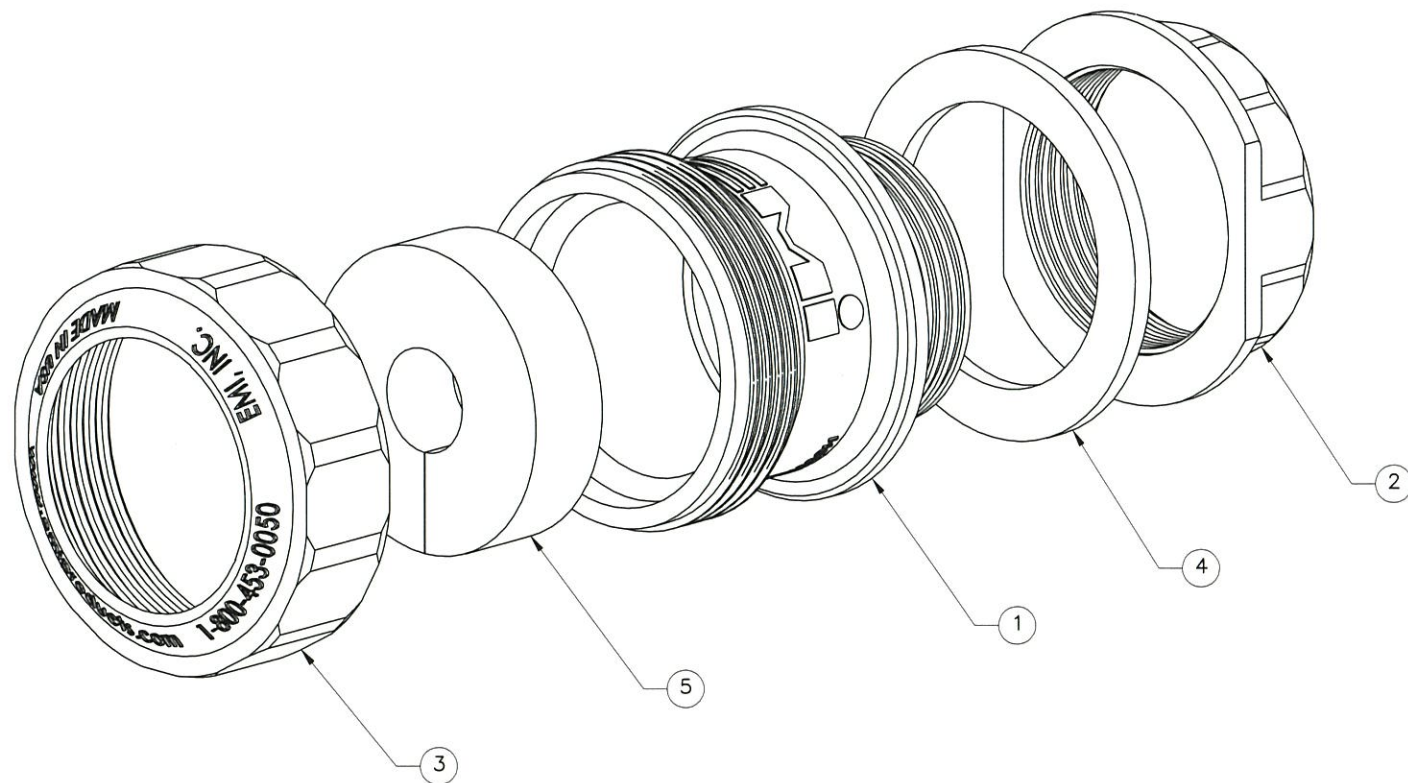
THE INFORMATION CONTAINED IN THIS DRAWING IS THE SOLE PROPERTY OF ELECTRO MECHANICAL INDUSTRIES, INC. ANY REPRODUCTION IN PART OR WHOLE WITHOUT THE WRITTEN PERMISSION OF ELECTRO MECHANICAL IND., IS PROHIBITED.




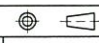
FRONT



SIDE VIEW SHOWN WITHOUT BACKNUT



ITEM NO.	QTY REQD	PART NUMBER	DESCRIPTION	LENGTH	WEIGHT
1	1	310-900-2459	320 SERIES BODY		0.06
2	1	310-900-2460	320 SERIES BACK NUT		0.02
3	1	310-900-2037	320 SERIES CAP		0.02
4	1	310-900-2166	320 SERIES GASKET		0.01
5	1	P-003-238	320 SERIES GROMMET (.573)		0.05

SURFACE FINISH <input checked="" type="checkbox"/> UNLESS OTHERWISE SPECIFIED		UNLESS OTHERWISE SPECIFIED DIMENSIONS ARE IN INCHES		APPROVALS		DATE		 ELECTRO MECHANICAL INDUSTRIES, INC. 11230 NEECHAW DRIVE HOUSTON, TEXAS 77065 1-800-453-0050	
MATERIAL SEE PARTS LIST		TOLERANCES .0 ± .06 .00 ± .015 .000 ± .005 FRACTIONS ± 1/16 ANGLES ± .25° HOLES: DRILLED OR PUNCHED +1/32 BURNED ± 1/32		DRAWN C. SANCHEZ CHECKED JKS ENGINEER/DESIGNER JKS PRODUCTION JKS		6.25.19 6/26/19 6/26/19 6/26/19			
THIRD ANGLE PROJECTION 		NEXT ASSY		USED ON		APPLICATIONS		SIZE B DRAWING NO. 1017-0060-0005 SCALE: 1:1 WEIGHT: 0.165 lbs. SHEET 1 OF 1	