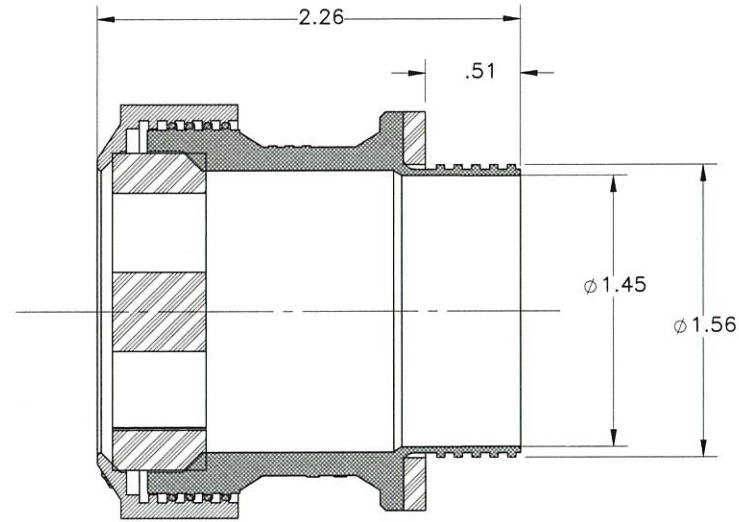
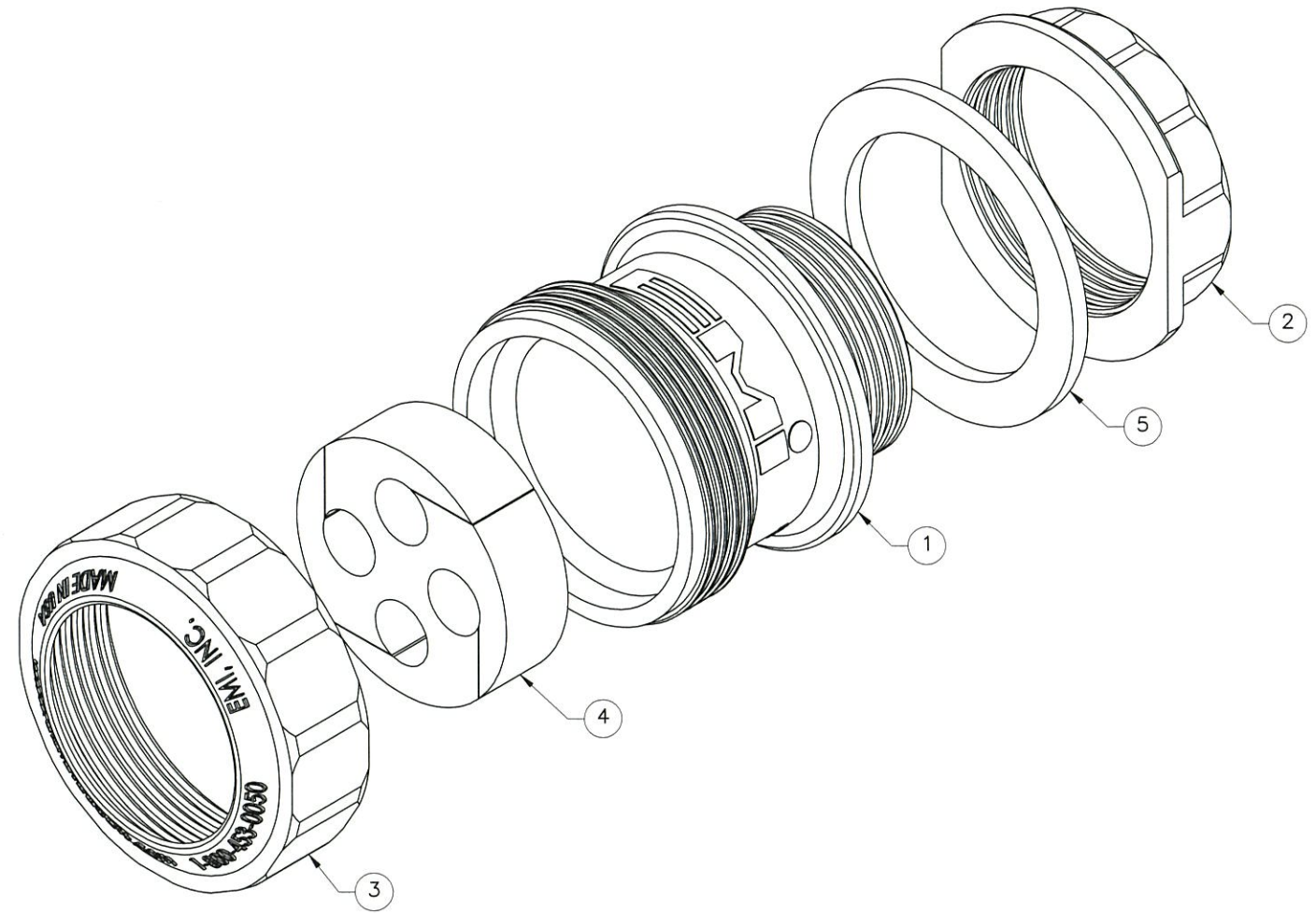
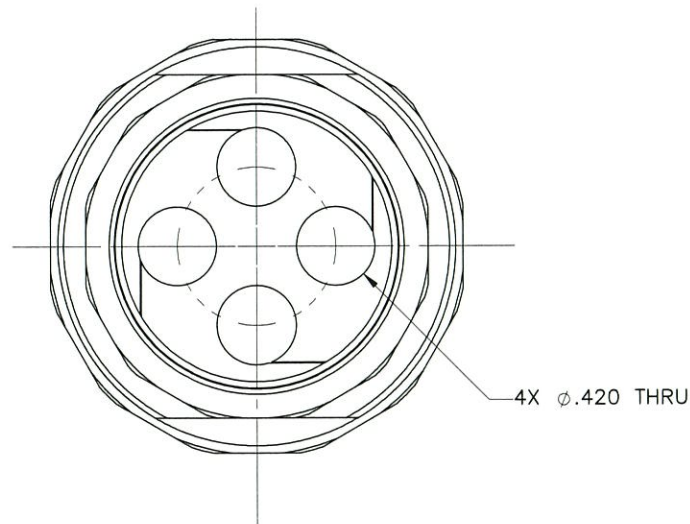
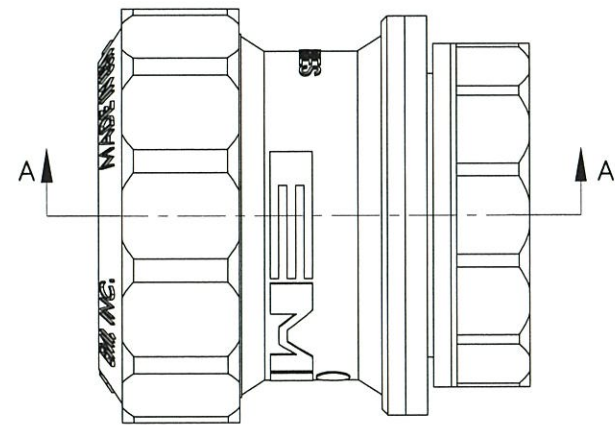


THE INFORMATION CONTAINED IN THIS DRAWING IS THE SOLE PROPERTY OF ELECTRO MECHANICAL INDUSTRIES, INC. ANY REPRODUCTION IN PART OR WHOLE WITHOUT THE WRITTEN PERMISSION OF ELECTRO MECHANICAL IND., IS PROHIBITED.



SECTION A-A
BACKNUT REMOVED



ITEM NO.	QTY REQD	PART NUMBER	DESCRIPTION	LENGTH	WEIGHT
1	1	310-900-2459	320 SERIES BODY		0.06
2	1	310-900-2460	320 SERIES BACK NUT		0.02
3	1	310-900-2037	320 SERIES CAP		0.02
4	1	P-003-476	320 SERIES GROMMET (4) .420 DIA.		0.04
5	1	310-900-2166	320 SERIES GASKET		0.01

SURFACE FINISH <input checked="" type="checkbox"/> UNLESS OTHERWISE SPECIFIED		UNLESS OTHERWISE SPECIFIED DIMENSIONS ARE IN INCHES		APPROVALS	DATE
MATERIAL	SEE PARTS LIST	TOLERANCES		DRAWN	8.19.19
THIRD ANGLE PROJECTION		.0	± .06	P. GUTIERREZ	8/19/19
		.00	± .015	CHECKED	8/19/19
		.000	± .005	ENGINEER/DESIGNER	8/19/19
		FRACTIONS	± 1/16	PRODUCTION	
		ANGLES	± .25°		
NEXT ASSY	USED ON	HOLES:			
		DRILLED OR PUNCHED	+1/32		
APPLICATIONS		BURNED	±1/32		

		ELECTRO MECHANICAL INDUSTRIES, INC. 11230 NEESEHAW DRIVE HOUSTON, TEXAS 77065 1-800-453-0050	
TITLE: 320 SERIES PORTAL ENTRY, (4) HOLE .420 DIA. GROMMET			
SIZE	DRAWING NO.	REV	
B	1017-0060-0008	-	
SCALE: 1:1	WEIGHT: 0.158 lbs.	SHEET 1 OF 1	