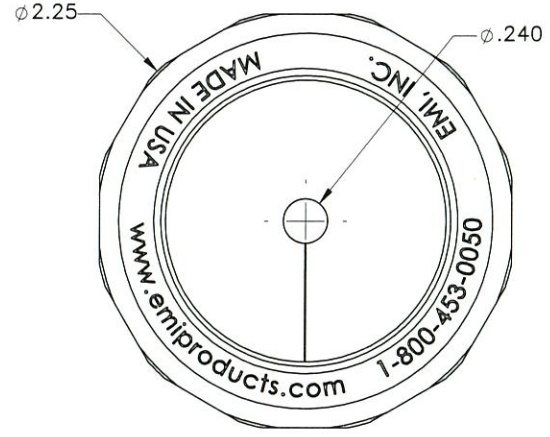
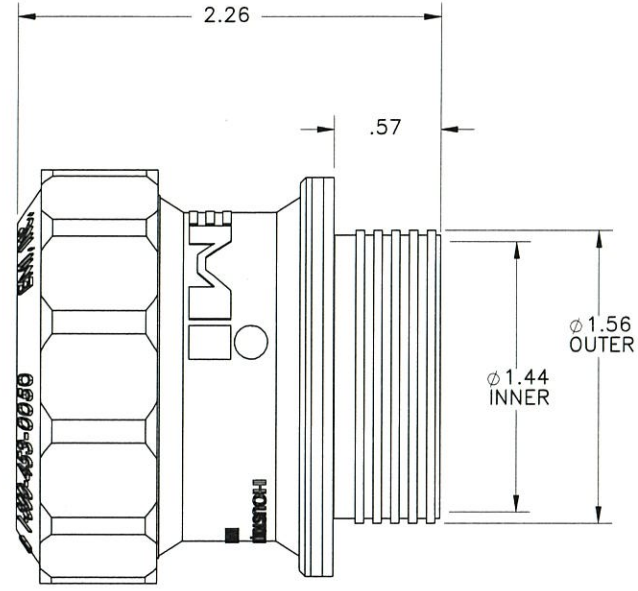


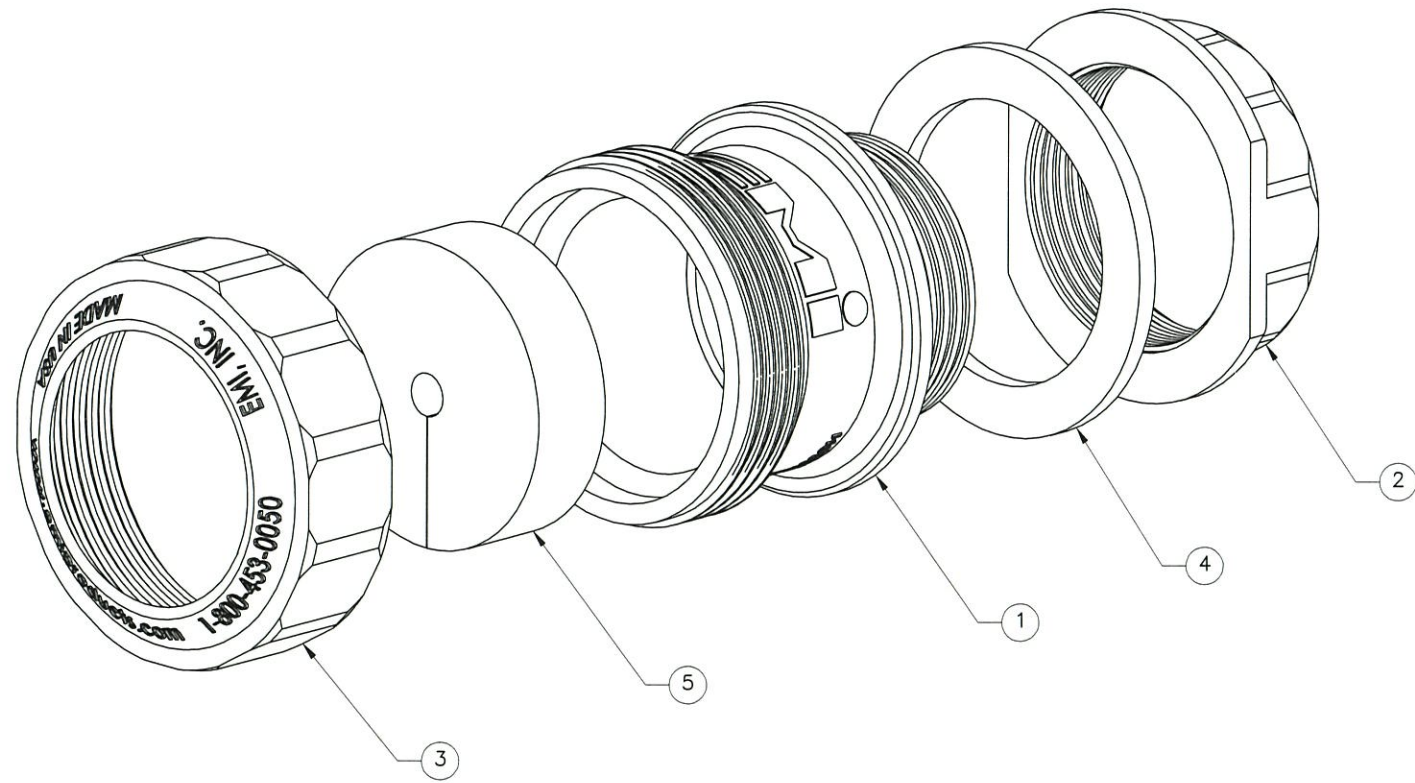
THE INFORMATION CONTAINED IN THIS DRAWING IS THE SOLE PROPERTY OF ELECTRO MECHANICAL INDUSTRIES, INC. ANY REPRODUCTION IN PART OR WHOLE WITHOUT THE WRITTEN PERMISSION OF ELECTRO MECHANICAL IND., IS PROHIBITED.




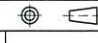
FRONT



SIDE VIEW SHOWN WITHOUT BACKNUT



ITEM NO.	QTY REQD	PART NUMBER	DESCRIPTION	LENGTH	WEIGHT
1	1	310-900-2459	320 SERIES BODY		0.06
2	1	310-900-2460	320 SERIES BACK NUT		0.02
3	1	310-900-2037	320 SERIES CAP		0.02
4	1	310-900-2166	320 SERIES GASKET		0.01
5	1	P-003-966	320 SERIES GROMMET (.240)		0.05

SURFACE FINISH <input checked="" type="checkbox"/> UNLESS OTHERWISE SPECIFIED		UNLESS OTHERWISE SPECIFIED DIMENSIONS ARE IN INCHES		APPROVALS	DATE	 ELECTRO MECHANICAL INDUSTRIES, INC. 11230 NEEDSHAW DRIVE HOUSTON, TEXAS 77065 1-800-453-0050
MATERIAL	SEE PARTS LIST	TOLERANCES		DRAWN	1.24.2020	
THIRD ANGLE PROJECTION		.0 ±.06 .00 ±.015 .000 ±.005		CHECKED	1/24/20	TITLE: 320 SERIES PORTAL ENTRY, (1) HOLE .240 DIA. GROMMET ENGINEER/DRAWN: <i>[Signature]</i> PRODUCTION: <i>[Signature]</i>
NEXT ASSY	USED ON	FRACTIONS ± 1/16 ANGLES ± .25°		DATE	1/24/20	
APPLICATIONS		HOLES: DRILLED OR PUNCHED ± 1/32 BURNED ± 1/32		SCALE	1:1	SIZE B DRAWING NO. 1017-0060-0010 REV - WEIGHT: 0.170 lbs. SHEET 1 OF 1