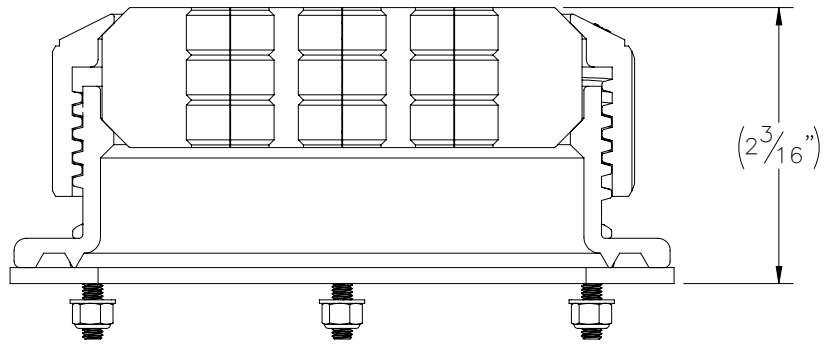
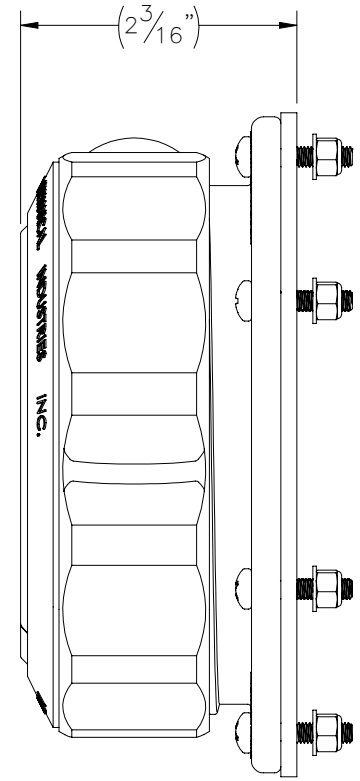
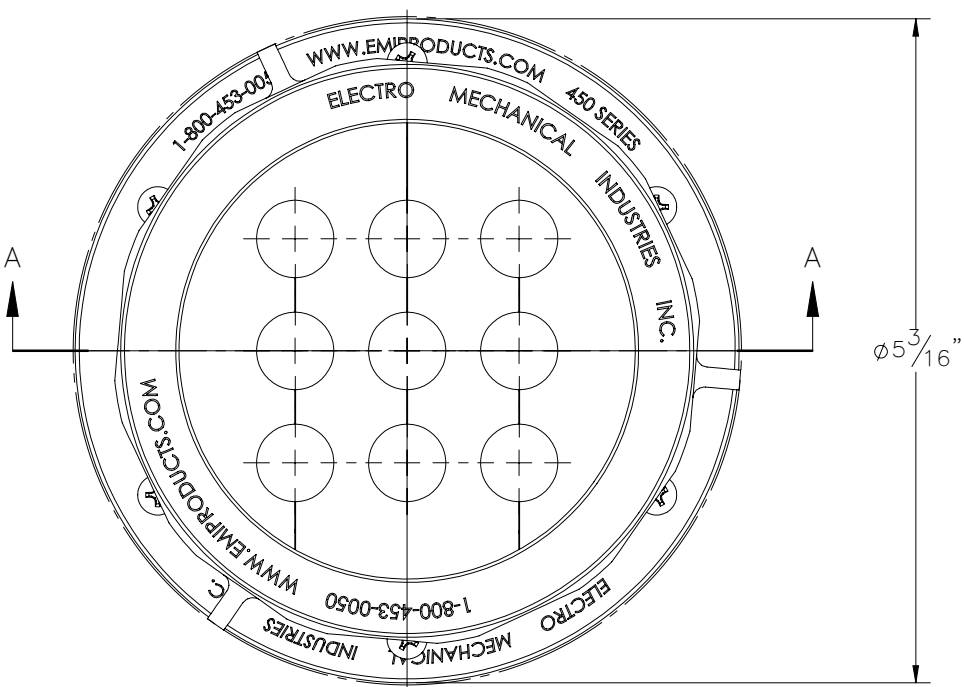
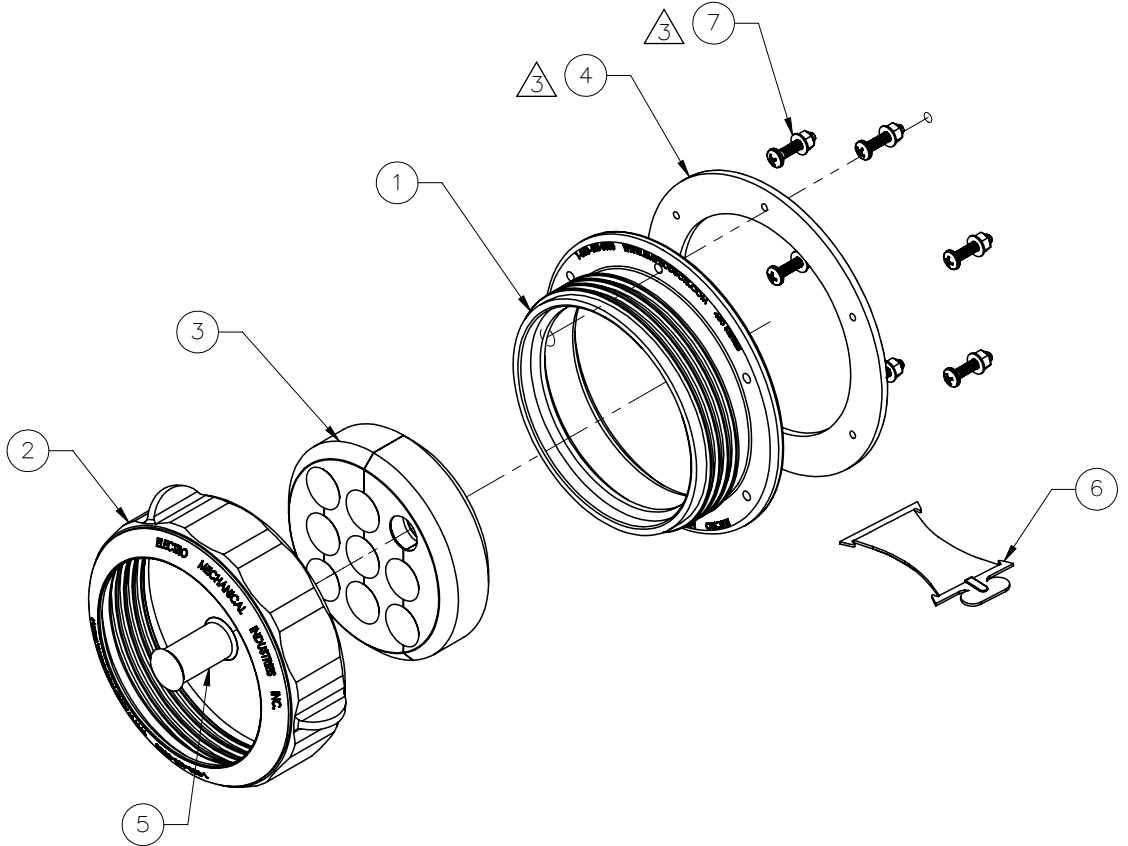


THE INFORMATION CONTAINED IN THIS DRAWING IS THE SOLE PROPERTY OF ELECTRO MECHANICAL INDUSTRIES, INC. ANY REPRODUCTION IN PART OR WHOLE WITHOUT THE WRITTEN PERMISSION OF ELECTRO MECHANICAL IND., IS PROHIBITED.


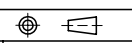
REVISIONS					
REV.	DCN #	DESCRIPTION	DATE	BY	APPROVED
3	01176	P-005-435 WAS T01-0003, HW KITTED TO 1000-0020-0100	08/17/2022	JTR	JPB



SECTION A-A



ITEM NO.	QTY REQD	PART NUMBER	DESCRIPTION	LENGTH	WEIGHT
1	1	P-002-783	450 SERIES PORTAL BODY, W/ ACME STYLE THD.		0.19
2	1	P-002-784	450 SERIES PORTAL CAP, W/ ACME STYLE THD.		0.20
3	1	P-002-785	450 SERIES PORTAL 9-HOLE 1/2" GROMMET, W/ FULL X		0.34
4	1	P-005-435	450 SERIES PORTAL GASKET		0.06
5	9	P-002-922	GROMMET PLUG. (.615 DIA.)		0.01
6	1	310-90L-0002	LUBE PACKET		0.02
7	1	1000-0020-0100	450 SERIES GROMMET ATTACHING HARDWARE KIT		0.0

SURFACE FINISH <input checked="" type="checkbox"/> UNLESS OTHERWISE SPECIFIED		UNLESS OTHERWISE SPECIFIED DIMENSIONS ARE IN INCHES		APPROVALS		DATE		 ELECTRO MECHANICAL INDUSTRIES, INC. 11250 NEESESHAW DRIVE HOUSTON, TEXAS 77065 1-800-453-0050	
MATERIAL SEE PARTS LIST		TOLERANCES .0 ±.06 .00 ±.015 .000 ±.005 FRACTIONS ± 1/16 ANGLES ± .25° HOLES: DRILLED OR PUNCHED ± 1/32 BURNED ± 1/32		DRAWN RLWjr		1/3/2019			
THIRD ANGLE PROJECTION 				CHECKER J. CRITELLI		1/3/2019		SIZE B DRAWING NO. 1017-0120-0001 REV 3	
NEXT ASSY USED ON				ENGINEER J. BREEN		1/3/2019			
APPLICATIONS				PRODUCTION JKS		1/4/2019			