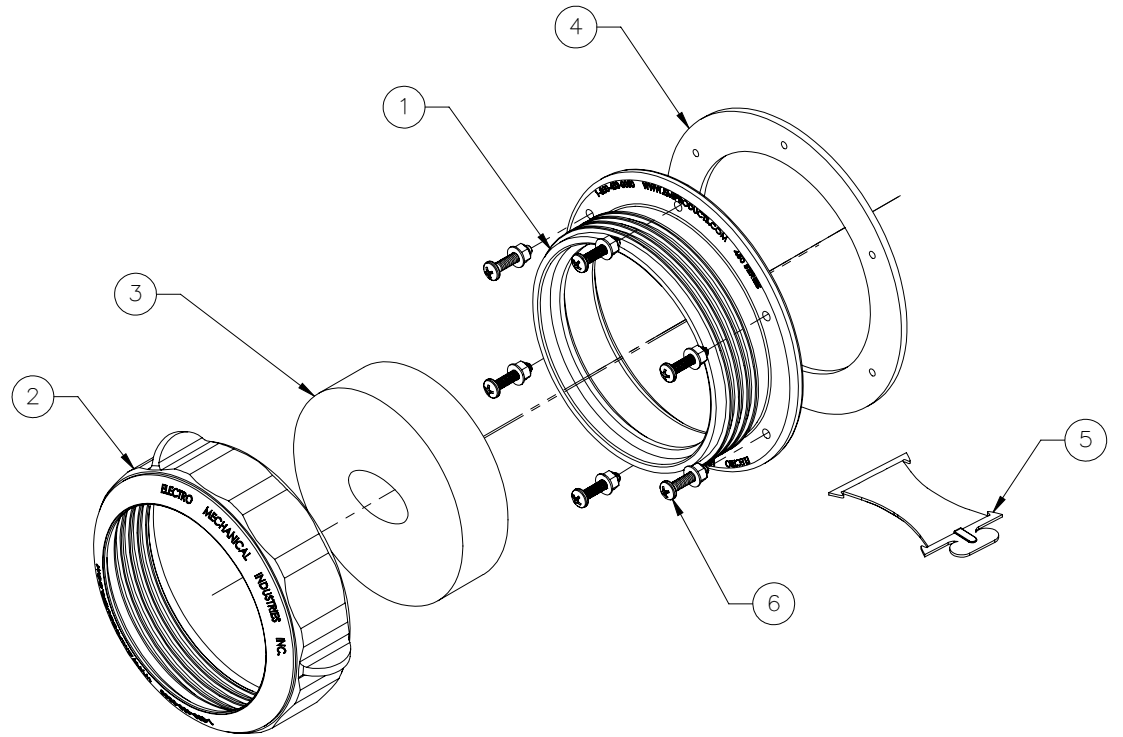
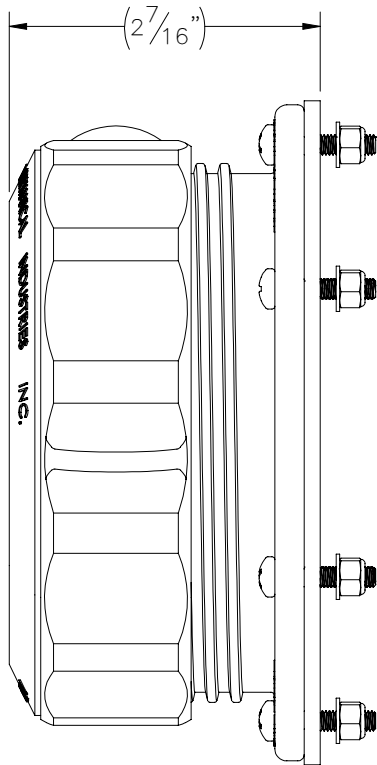
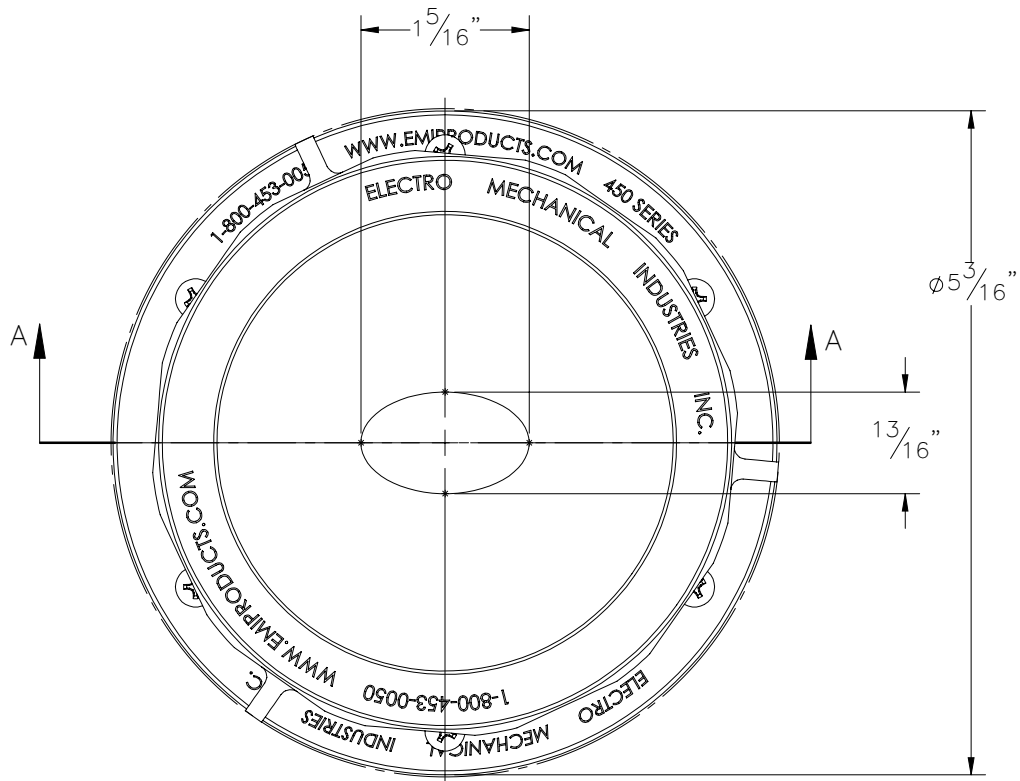
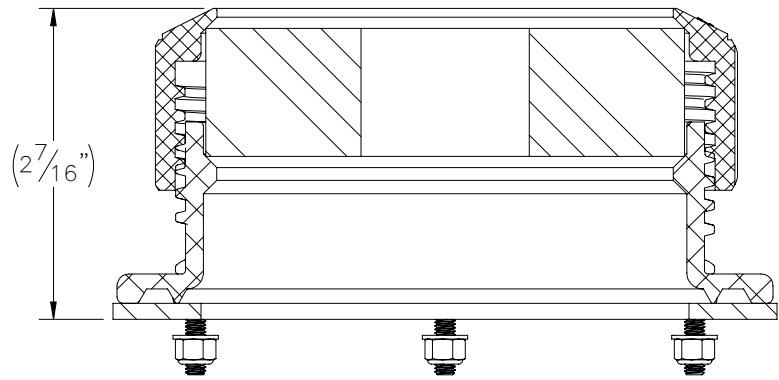

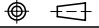


THE INFORMATION CONTAINED IN THIS DRAWING IS THE SOLE PROPERTY OF ELECTRO MECHANICAL INDUSTRIES, INC. ANY REPRODUCTION IN PART OR WHOLE WITHOUT THE WRITTEN PERMISSION OF ELECTRO MECHANICAL IND., IS PROHIBITED.



ITEM NO.	QTY REQD	PART NUMBER	DESCRIPTION	LENGTH	WEIGHT
1	1	P-002-783	450 SERIES PORTAL BODY, W/ ACME STYLE THD.		0.19
2	1	P-002-784	450 SERIES PORTAL CAP, W/ ACME STYLE THD.		0.20
3	1	P-005-792	450 SERIES GROMMET, EW90 (WJ)		0.367
4	1	P-005-435	450 SERIES PORTAL GASKET		0.06
5	1	310-90L-0002	LUBE PACKET		0.02
6	1	1000-0020-0100	450 SERIES GROMMET ATTACHING HARDWARE KIT		0.0

SURFACE FINISH	UNLESS OTHERWISE SPECIFIED	UNLESS OTHERWISE SPECIFIED DIMENSIONS ARE IN INCHES	APPROVALS	DATE	 ELECTRO MECHANICAL INDUSTRIES, INC. 11230 NEESHAW DRIVE HOUSTON, TEXAS 77065 1-800-453-0050
MATERIAL	SEE PARTS LIST	TOLERANCES .0 ±.06 .00 ±.015 .000 ±.005	DRAWN J. Breen	6/5/2023	
THIRD ANGLE PROJECTION		FRACTIONS ± 1/16 ANGLES ± .25°	CHECKER J. ROACH	6/5/2023	
		HOLES: DRILLED OR PUNCHED ± 1/32	ENGINEER J. Breen	6/5/2023	
NEXT ASSY	USED ON	BURNED ± 1/32	PRODUCTION J. KERNER	6/5/2023	

APPLICATIONS		TITLE: 450 SERIES PORTAL ENTRY, ELLIPTICAL	
SCALE: 1:1.5	WEIGHT: 0.84 lbs.	SHEET 1 OF 1	REV 0