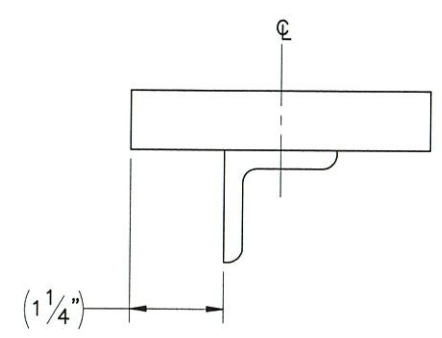
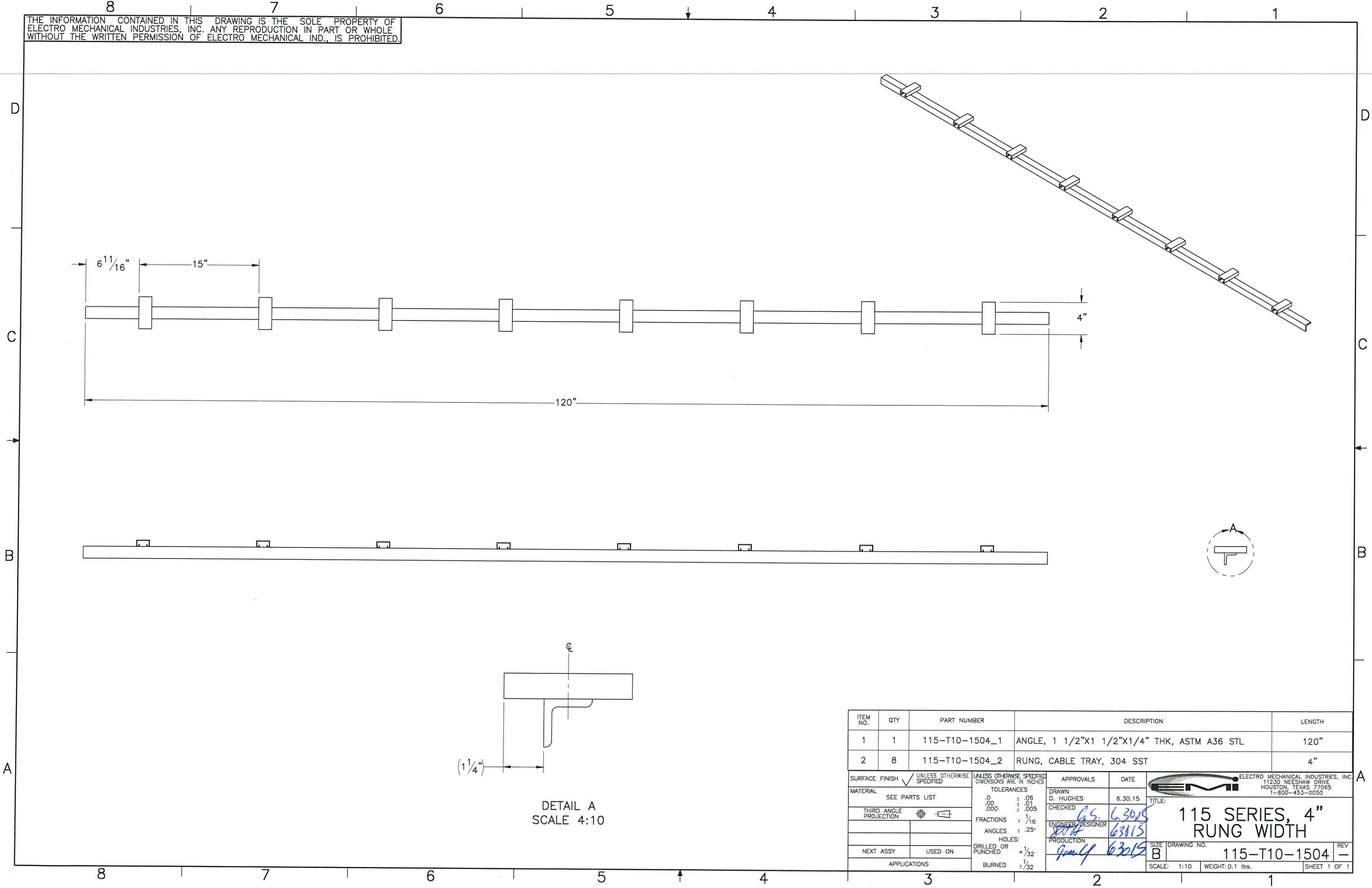
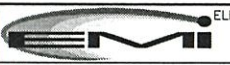
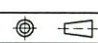


THE INFORMATION CONTAINED IN THIS DRAWING IS THE SOLE PROPERTY OF ELECTRO MECHANICAL INDUSTRIES, INC. ANY REPRODUCTION IN PART OR WHOLE WITHOUT THE WRITTEN PERMISSION OF ELECTRO MECHANICAL IND., IS PROHIBITED.



DETAIL A
SCALE 4:10

ITEM NO.	QTY	PART NUMBER	DESCRIPTION	LENGTH
1	1	115-T10-1504_1	ANGLE, 1 1/2"X1 1/2"X1/4" THK, ASTM A36 STL	120"
2	8	115-T10-1504_2	RUNG, CABLE TRAY, 304 SST	4"

SURFACE FINISH <input checked="" type="checkbox"/> UNLESS OTHERWISE SPECIFIED		UNLESS OTHERWISE SPECIFIED DIMENSIONS ARE IN INCHES		APPROVALS	DATE	 ELECTRO MECHANICAL INDUSTRIES, INC. 11230 NEESHAW DRIVE HOUSTON, TEXAS 77065 1-800-453-0050
MATERIAL SEE PARTS LIST		TOLERANCES		DRAWN D. HUGHES	6.30.15	
THIRD ANGLE PROJECTION 		.0 ± .06 .000 ± .01		CHECKED <i>G.S.</i>	<i>6.30.15</i>	
NEXT ASSY USED ON		FRACTIONS ± 1/16 ANGLES ± .25°		ENGINEER/DESIGNER <i>G.S.</i>	<i>6.30.15</i>	
APPLICATIONS		HOLES: DRILLED OR PUNCHED +1/32 BURNED ±1/32		PRODUCTION <i>Jan 14</i>	<i>6.30.15</i>	TITLE: 115 SERIES, 4" RUNG WIDTH
				SIZE B	DRAWING NO. 115-T10-1504	REV -
				SCALE: 1:10	WEIGHT: 0.1 lbs.	SHEET 1 OF 1