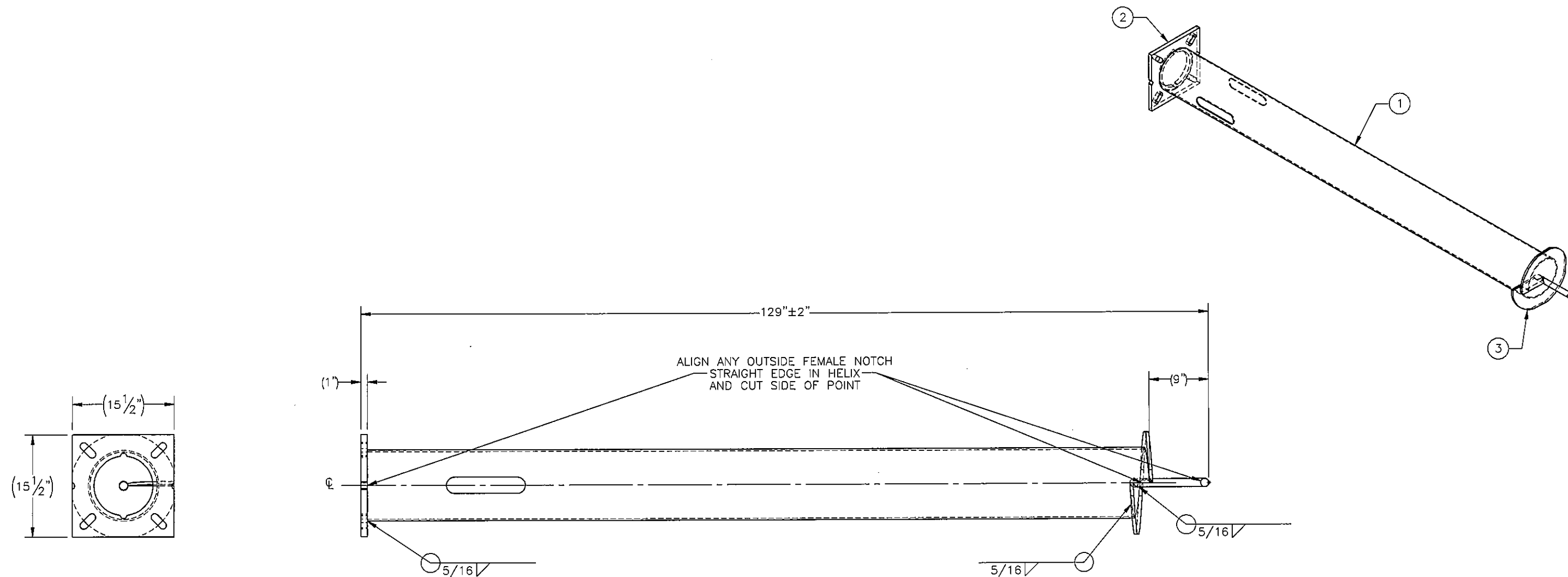


THE INFORMATION CONTAINED IN THIS DRAWING IS THE SOLE PROPERTY OF ELECTRO MECHANICAL INDUSTRIES, INC. ANY REPRODUCTION IN PART OR WHOLE WITHOUT THE WRITTEN PERMISSION OF ELECTRO MECHANICAL IND., IS PROHIBITED

REVISIONS					
REV.	DCN #	DESCRIPTION	DATE	BY	APPROVED
8	00979	UPDATED WEIGHT	12/4/2020	BLH	JPB



- NOTES:
UNLESS OTHERWISE SPECIFIED,
1. ALL WELDING PER AWS D1.1, FCAW, E7XT-1 AND GMAW, ER70S-6 ELECTRODES.
 2. SQUARENESS OF WELDED COMPONENTS TO BE WITHIN +/- 1/16".
 3. ALL WELDS 3/16" FILLET OR SEAM WELDS ALL AROUND AS APPLICABLE PER JOINT.
 4. ALL CAPTIVE TUBES MUST HAVE MIN. TWO WEEP HOLES (ONE UPPER, ONE LOWER) 7/16" DIA.
 5. GALVANIZE PER ASTM A123.

ITEM NO.	QTY REQD	PART NUMBER	DESCRIPTION	LENGTH	WEIGHT
1	1	P-000-185	SHAFT	119"	268.95
2	1	P-000-184	TOP PLATE	15 1/2"	46.50
3	1	W-001-971	10" HELICAL FLIGHT/PIER POINT WELDMENT		31.29

SURFACE FINISH <input checked="" type="checkbox"/> UNLESS OTHERWISE SPECIFIED		UNLESS OTHERWISE SPECIFIED DIMENSIONS ARE IN INCHES		APPROVALS		DATE	
MATERIAL SEE PARTS LIST		TOLERANCES		DRAWN		D. HUGHES 05.04.15	
THIRD ANGLE PROJECTION		0 ± .06		CHECKED		T. PETERS 08.05.16	
		.00 ± .01		ENGINEER/DESIGNER		D. HUGHES 08.05.15	
		.000 ± .005		PRODUCTION		J. CRAIG 08.05.15	
		FRACTIONS ± 1/16		SIZE		DRAWING NO.	
		ANGLES ± .25°		B		400-000-1001	
		HOLES:		SCALE: 1:16		WEIGHT: 346.7 lbs/8	
NEXT ASSY USED ON		DRILLED OR PUNCHED ± 1/32		SHEET 1 OF 1		REV 8	
APPLICATIONS		BURNED ± 1/32					

EMI ELECTRO MECHANICAL INDUSTRIES, INC.
11230 NEESHAW DRIVE
HOUSTON, TEXAS 77065
1-800-453-0050

TITLE:
10" X 10", 1" BASE, 1" HDW. - HELICAL PIER