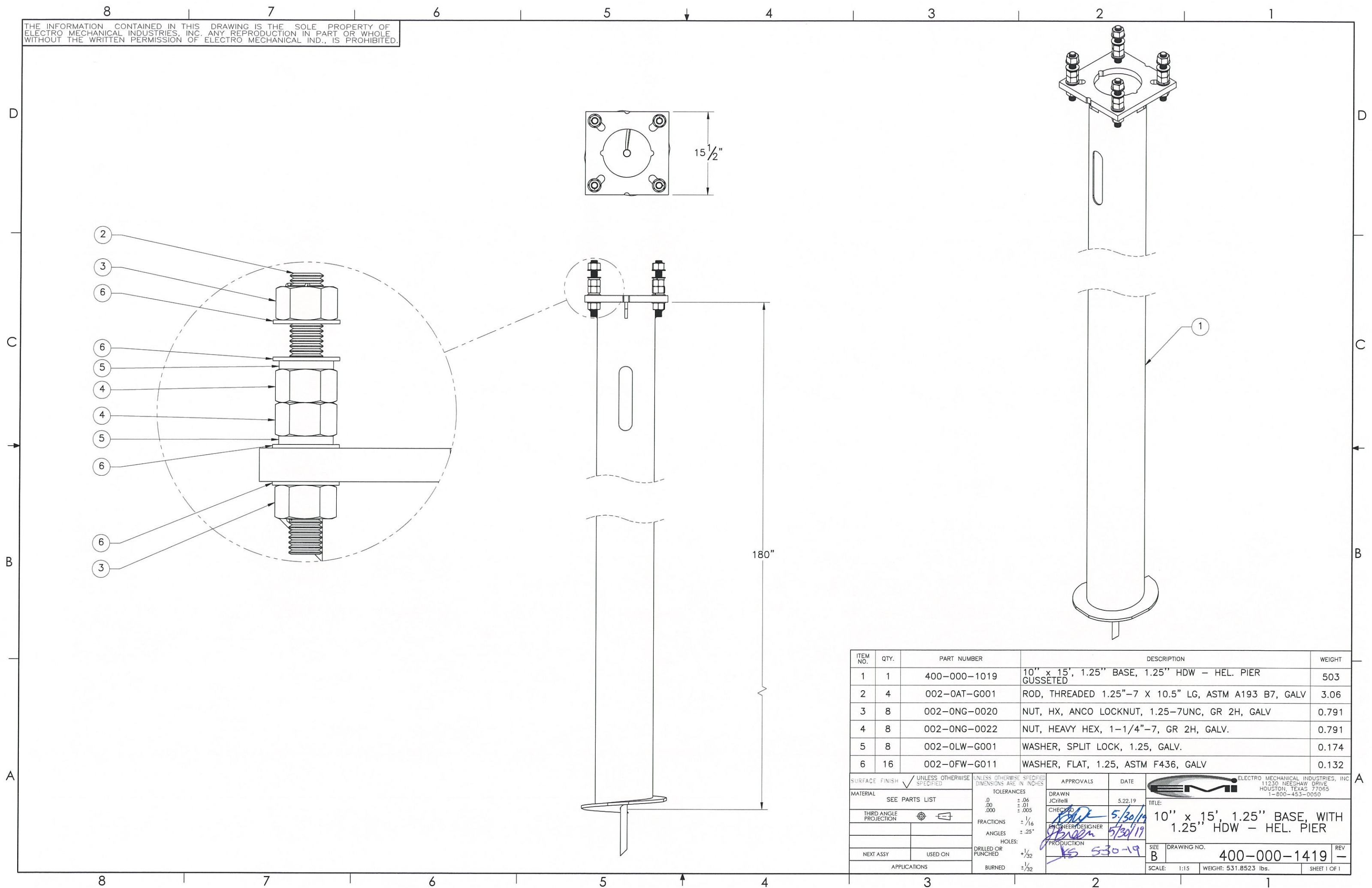




THE INFORMATION CONTAINED IN THIS DRAWING IS THE SOLE PROPERTY OF ELECTRO MECHANICAL INDUSTRIES, INC. ANY REPRODUCTION IN PART OR WHOLE WITHOUT THE WRITTEN PERMISSION OF ELECTRO MECHANICAL IND., IS PROHIBITED.



ITEM NO.	QTY.	PART NUMBER	DESCRIPTION	WEIGHT
1	1	400-000-1019	10" x 15', 1.25" BASE, 1.25" HDW - HEL. PIER GUSSETED	503
2	4	002-OAT-G001	ROD, THREADED 1.25"-7 X 10.5" LG, ASTM A193 B7, GALV	3.06
3	8	002-ONG-0020	NUT, HX, ANCO LOCKNUT, 1.25-7UNC, GR 2H, GALV	0.791
4	8	002-ONG-0022	NUT, HEAVY HEX, 1-1/4"-7, GR 2H, GALV.	0.791
5	8	002-OLW-G001	WASHER, SPLIT LOCK, 1.25, GALV.	0.174
6	16	002-OFW-G011	WASHER, FLAT, 1.25, ASTM F436, GALV	0.132

SURFACE FINISH <input checked="" type="checkbox"/> UNLESS OTHERWISE SPECIFIED		UNLESS OTHERWISE SPECIFIED DIMENSIONS ARE IN INCHES		APPROVALS	DATE	 ELECTRO MECHANICAL INDUSTRIES, INC. 11230 NEEGHAW DRIVE HOUSTON, TEXAS 77065 1-800-453-0050
MATERIAL	SEE PARTS LIST	TOLERANCES		DRAWN	5.22.19	
THIRD ANGLE PROJECTION		.000 ± .005		CHECKED	5/30/19	TITLE: 10" x 15', 1.25" BASE, WITH 1.25" HDW - HEL. PIER
NEXT ASSY	USED ON	FRACTIONS ± 1/16		ENGINEER/DRAWN	5/30/19	
APPLICATIONS		ANGLES ± .25°		PRODUCTION	5/30-19	SIZE B DRAWING NO. 400-000-1419 REV - SCALE: 1:15 WEIGHT: 531.8523 lbs. SHEET 1 OF 1
		HOLES: ± 1/32				
		BURNED ± 1/32				