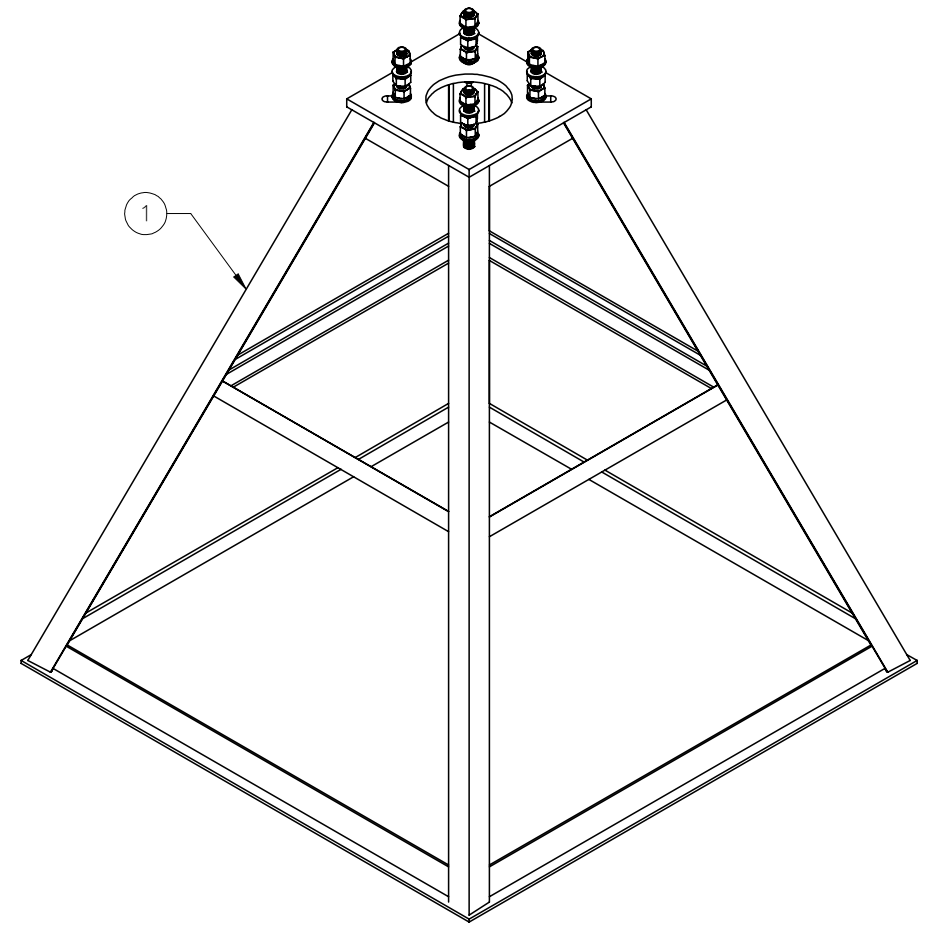
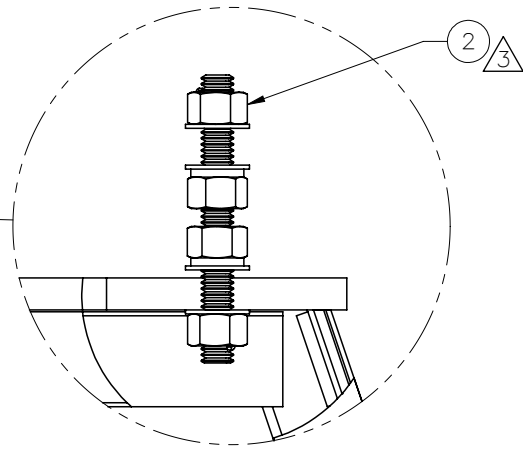
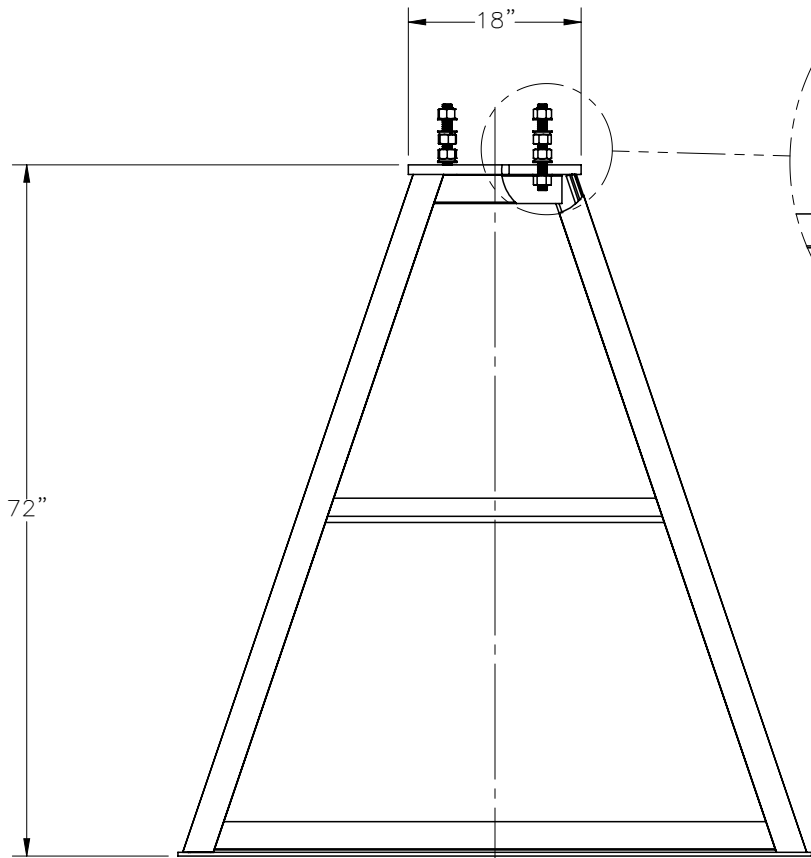
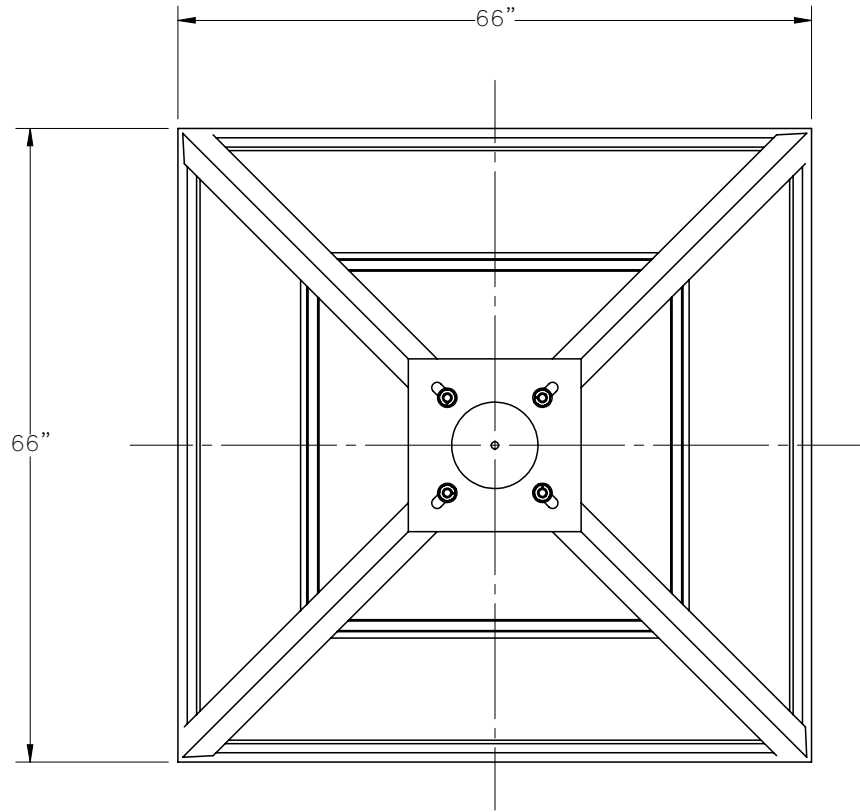


THE INFORMATION CONTAINED IN THIS DRAWING IS THE SOLE PROPERTY OF ELECTRO MECHANICAL INDUSTRIES, INC. ANY REPRODUCTION IN PART OR WHOLE WITHOUT THE WRITTEN PERMISSION OF ELECTRO MECHANICAL IND., IS PROHIBITED.

REVISIONS					
REV.	DCN #	DESCRIPTION	DATE	BY	APPROVED
3	01155	UPDATE LEVELING HARDWARE	6/10/2022	BLH	JPB



ITEM NO.	Default / QTY REQD	PART NUMBER	DESCRIPTION	LENGTH	WEIGHT
1	1	400-000-3501-0100	STEEL FRAME FOUNDATION		842.5
2	1	1000-0020-0077	QUAD MOUNT LEVELING HARDWARE KIT		15.2

SURFACE FINISH	UNLESS OTHERWISE SPECIFIED	UNLESS OTHERWISE SPECIFIED DIMENSIONS ARE IN INCHES	APPROVALS	DATE
MATERIAL	SEE PARTS LIST	TOLERANCES	DRAWN	10/7/2011
THIRD ANGLE PROJECTION		.0 ± .06	CHECKER	10/31/2011
		.00 ± .015	ENGINEER	10/31/2011
		.000 ± .005	PRODUCTION	11/1/2011
		FRACTIONS ± 1/16		
		ANGLES ± .25°		
		HOLES:		
NEXT ASSY	USED ON	DRILLED OR PUNCHED		
		+1/32		
APPLICATIONS		BURNED		
		±1/32		

TITLE:		ELECTRO MECHANICAL INDUSTRIES, INC. 11230 NEESESHAW DRIVE HOUSTON, TEXAS 77065 1-800-453-0050	
STEEL FRAME FOUNDATION		SIZE	REV
		B	3
DRAWING NO.		400-000-3501	
SCALE: 1:20	WEIGHT: 857.6 lbs.	SHEET 1 OF 1	