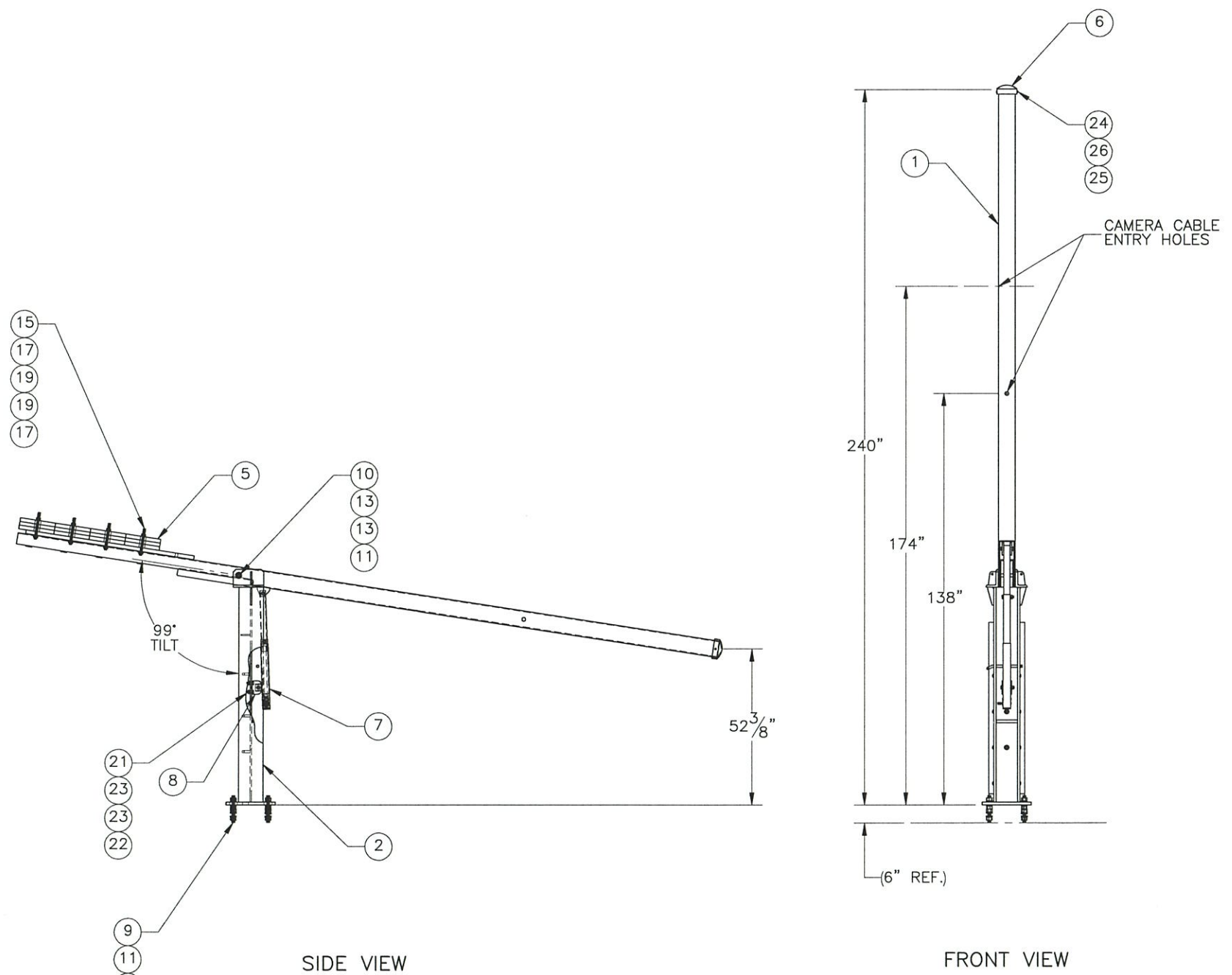
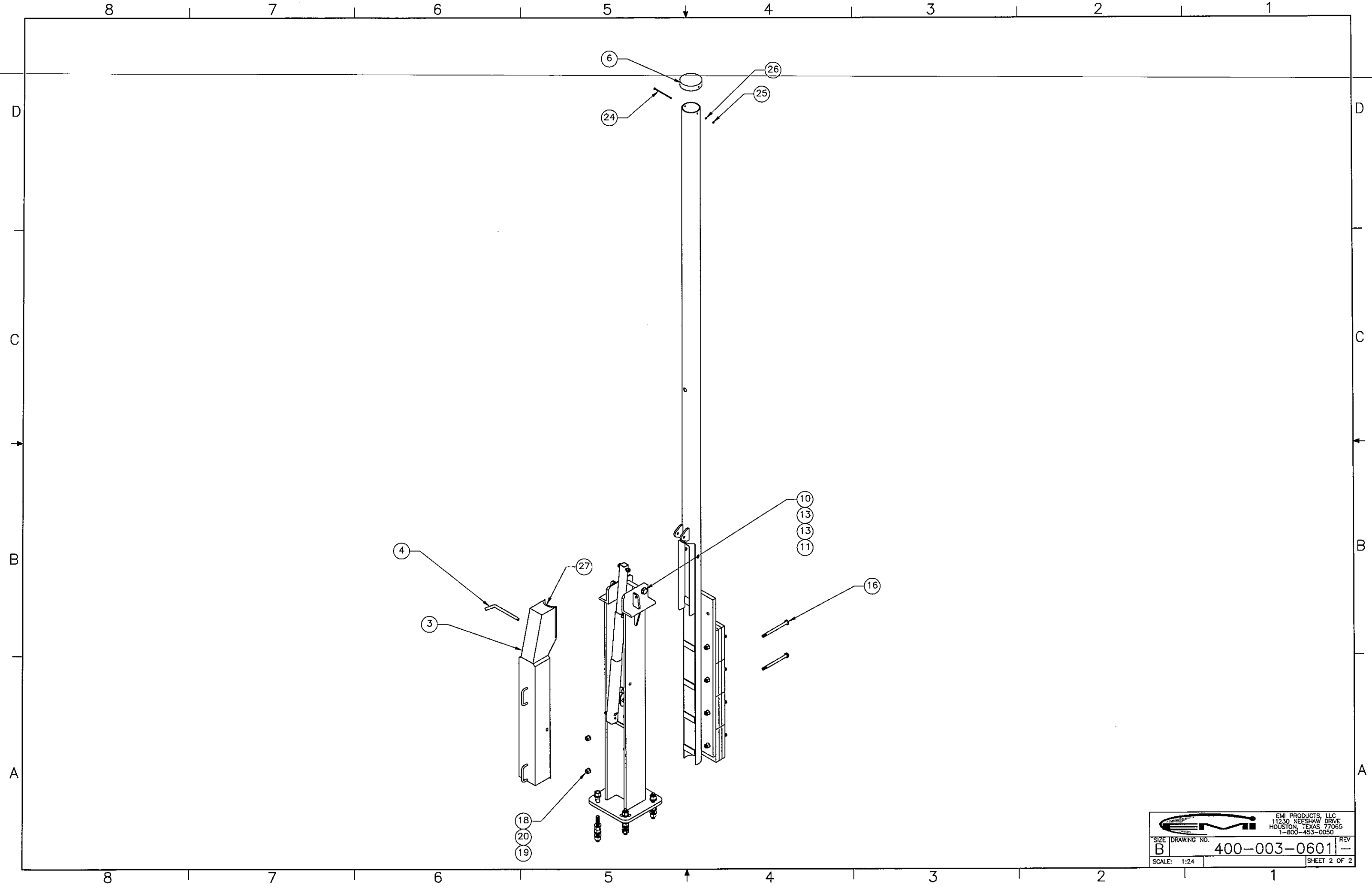



THE INFORMATION CONTAINED IN THIS DRAWING IS THE SOLE PROPERTY OF EMI PRODUCTS, LLC. ANY REPRODUCTION IN PART OR WHOLE WITHOUT THE WRITTEN PERMISSION OF EMI PRODUCTS, LLC, IS PROHIBITED.



ITEM NO.	QTY REQD	PART NUMBER	DESCRIPTION
1	1	400-003-0601-0200	TOWER MAST ASSEMBLY
2	1	400-003-0500-0100	SUPPORT BASE ASSEMBLY
3	1	400-003-0500-0180	JACK SECURITY COVER
4	1	400-003-0500-0181	.75" DIA. X 9.75" LG. BENT HITCH PIN
5	12	400-003-0500-0220	REMOVABLE BALLAST
6	1	400-003-0500-0250	MAST CAP
7	1	400-904-3500	LIFT JACK ASSEMBLY KIT
8	1	400-904-3500-0120	JACK BRACKET
9	4	002-OAT-H000	ROD, THREADED, 1.00"-8 X 9.00" LG, ASTM A193 B7, GALV.
10	1	002-OBG-0006	BOLT, HX HD, 1.00-8UNC X 9.00 LG, A325, GALV
11	11	M002-ONG-0000	NUT, HX, ANCO LOCKNUT, 1.00"-8, GR 2H, GALV.
12	10	002-ONG-0008	NUT, HX, 1.00"-8UNC, GR 2H, GALV
13	22	M002-OFW-G009	WASHER, FLAT, 1.00", F436, GALV.
14	19	002-OLW-G008	WASHER, SPLIT LOCK, 1.00, GALV.
15	8	002-OAT-HA01	ROD, THREADED, .75-10UNC X 9.00 LG, ASTM A193 B7, GALV.
16	2	002-OBG-R024	BOLT, HX HD, .75-10UNC X 10.00 LG, ASTM A325, GALV
17	16	002-ONG-0016	NUT, HX, ANCO LOCKNUT, .75-10UNC, GR 2H, GALV
18	2	002-ONG-0019	NUT, HX, .75-10UNC, GR DH, GALV
19	20	002-OFW-G003	WASHER, FLAT, .75 INCH, F436, GALV
20	2	002-OLW-G003	WASHER, SPLIT LOCK, .75 INCH, GALV
21	2	002-OBG-0036	BOLT, HX HD, .625-11UNC X 2.00 LG, ASTM A325, GALV
22	2	002-ONG-0026	NUT, HX, ANCO LOCKNUT, .625-11UNC, GR 2H, GALV
23	4	002-OFW-G004	WASHER, FLAT, .625 INCH, ASTM F436, GALV
24	1	002-OBZ-0002	BOLT, HX HD, .25-20UNC X 7.00 LG, GR 5, ZINC
25	1	002-ONZ-0008	NUT, HX, .25-20UNC, GR5, ZINC
26	1	002-OLW-Z008	WASHER, SPLIT-LOCK, .25 INCH, ZINC
27	1	309-000-0001	EDGE GUARD, 3/16" X 28" LG.

SURFACE FINISH <input checked="" type="checkbox"/> UNLESS OTHERWISE SPECIFIED		UNLESS OTHERWISE SPECIFIED DIMENSIONS ARE IN INCHES		APPROVALS	DATE	 <small>EMI PRODUCTS, LLC 11230 NEESEHAW DRIVE HOUSTON, TEXAS 77065 1-800-453-0050</small>
MATERIAL	GALV. STEEL	TOLERANCES		DRAWN	12.13.13	
THIRD ANGLE PROJECTION		.0 ± .06		CHECKED	<i>RLWjr</i> 12.13.13	20' TREBUCHET CAMERA TOWER
		.000 ± .01		ENGINEER/DESIGNER	<i>RLWjr</i> 12.13.13	
		FRACTIONS ± 1/16		PRODUCTION	<i>RLWjr</i> 12.13.13	DRAWING NO.
		ANGLES ± .25°			<i>RLWjr</i> 02-28-14	400-003-0601
NEXT ASSY	USED ON	HOLES:				SCALE: 1:46
		DRILLED OR PUNCHED +1/32				WEIGHT: 1,780 lbs.
APPLICATIONS		BURNED ±1/32				SHEET 1 OF 2



		EMI PRODUCTS, LLC 11230 NEESEAW DRIVE HOUSTON, TEXAS 77065 1-800-453-0050	
SIZE	DRAWING NO.	REV	
B	400-003-0601	-	
SCALE: 1:24	SHEET 2 OF 2		