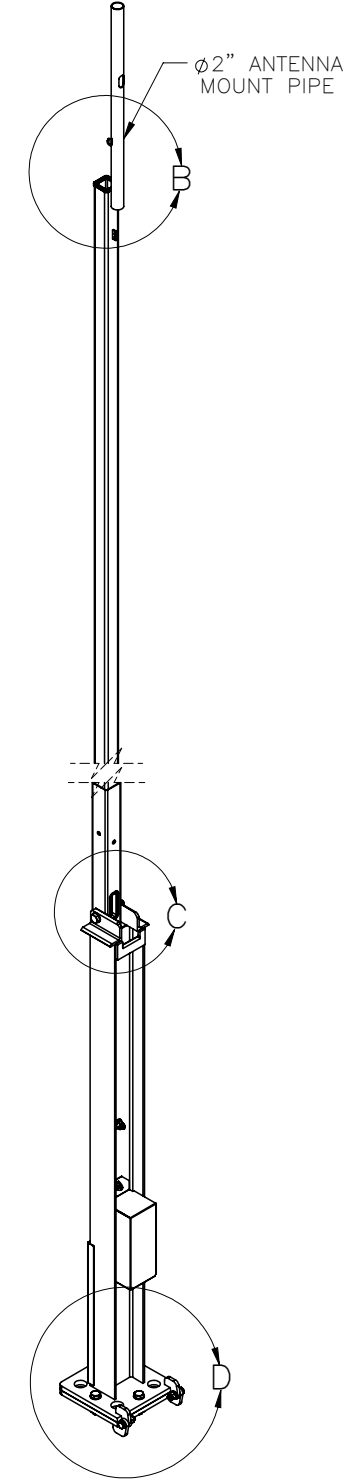
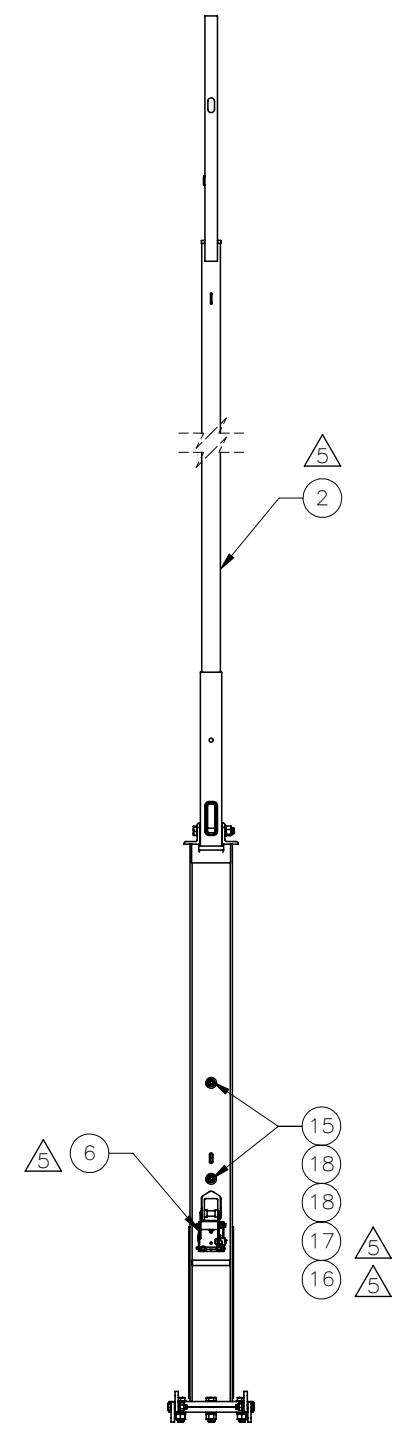
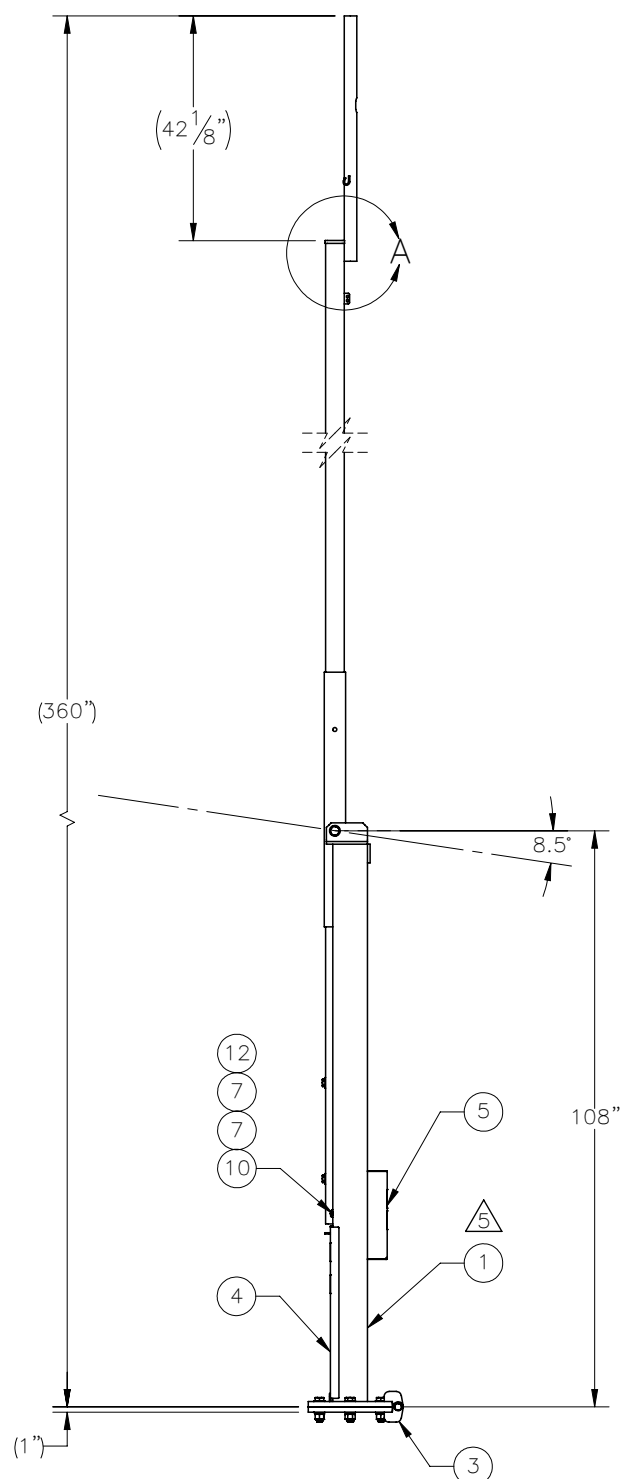
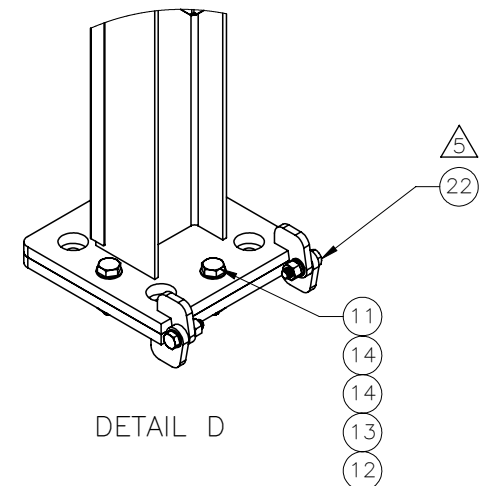
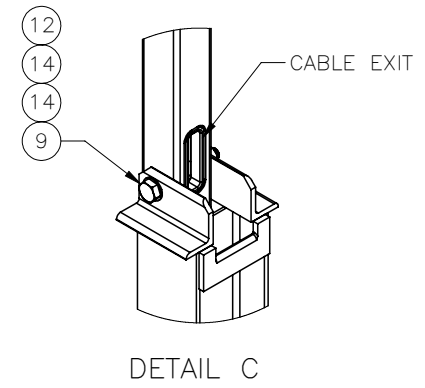
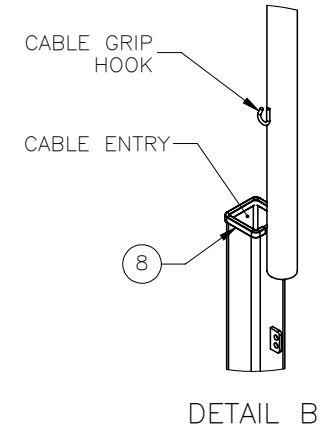
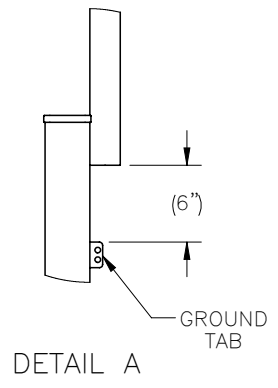



THE INFORMATION CONTAINED IN THIS DRAWING IS THE SOLE PROPERTY OF ELECTRO MECHANICAL INDUSTRIES, INC. ANY REPRODUCTION IN PART OR WHOLE WITHOUT THE WRITTEN PERMISSION OF ELECTRO MECHANICAL IND., IS PROHIBITED.

REVISIONS					
REV.	DCN #	DESCRIPTION	DATE	BY	APPROVED
5	01123	W-000-266, W-000-267 AND 1002-0050-0003 UPDATED DUE TO LOWER LEVEL CHANGES. .75 HW CHANGED TO KIT 1000-0020-0074, 002-ONG-002 AND 002-OLW-G003 QTY 4 TO QTY 2.	04/18/2022	JTR	JPB



90 MPH EIA/TIA REV G  
PATENT #: 8,910,432

ITEM NO.	QTY	PART NUMBER	DESCRIPTION	LENGTH	Weight
1	1	W-000-266	SUPPORT BASE ASSEMBLY		299.43
2	1	W-000-267	MAST ASSEMBLY		298.6
3	1	400-004-3050-0630	LOWER HINGE BASE ASSEMBLY		69.28
4	1	400-004-3050-0629	FRONT COVER - NOTCHED		8.00
5	1	400-004-3050-0612	WINCH COVER		8.74
6	1	1002-0050-0003	WINCH KIT (1/4" X 14' WIRE ROPE)		1.9
7	2	400-000-0902	1" SCH. 40 PVC SLEEVE		0.024
8	1	309-000-0001-11	EDGE GUARD, 3/16", 11" LG	11"	0.1
9	1	002-0BG-0081	BOLT, HX HD, 1.00-8UNC X 7.00 LG, GR B7, GALV		1.90
10	1	002-0BG-0226	BOLT, HX HD, 1.00-8UNC X 5.00 LG, GR B7, GALV		1.44
11	4	002-0BG-0210	BOLT, HX HD, 1.00-8 X 4.00 LG, ASTM A193 GR B7, GALV		1.21
12	6	002-ONG-0000	NUT, HX, ANCO LOCK, 1.00-8UNC, GR 2H, GALV		0.43
13	4	002-OLW-G008	WASHER, SPLIT LOCK, 1.00", GALV		0.09
14	10	002-OFW-G009	WASHER, FLAT, 1.00", F436, GALV.		0.08
15	2	002-0BG-0216	BOLT, HX HD, .75-10UNC X 6.50 LG, ASTM A325, GALV.		1.0
16	2	002-ONG-0002	NUT, HX, .75-10UNC, GR 2H, GALV		0.19
17	2	002-OLW-G003	WASHER, SPLIT LOCK, .75", GALV		0.04
18	4	002-OFW-G015	WASHER, FLAT, .75 INCH, TYPE A, GALV		0.07
19	2	999-999-L001	3.5" x 5" DO NOT CLIMB DECAL		0.01
20	2	999-999-L002	3.5" x 5" PINCH POINT DECAL		0.01
21	1	999-999-L003	3.5" x 5" WINCH RATING DECAL		0.01
22	1	1000-0020-0074	TILT-UP TOWER HINGE 3/4" HARDWARE KIT		1.68

SURFACE FINISH <input checked="" type="checkbox"/> UNLESS OTHERWISE SPECIFIED		UNLESS OTHERWISE SPECIFIED DIMENSIONS ARE IN INCHES		APPROVALS		DATE		 ELECTRO MECHANICAL INDUSTRIES, INC. 11230 NEESESHAW DRIVE HOUSTON, TEXAS 77065 1-800-453-0050	
MATERIAL SEE PARTS LIST		TOLERANCES		DRAWN C. SANCHEZ		6/23/2016		TITLE: 30' TILT-UP TOWER	
THIRD ANGLE PROJECTION		.0 ±.06 .00 ±.015 .000 ±.005		CHECKER DTH		6/23/2016		ENGINEER C. SANCHEZ	
NEXT ASSY		FRACTIONS ± 1/16		PRODUCTION JBOWLDS		6/24/2016		SIZE B	
USED ON		ANGLES ±.25°		DRAWING NO. 400-004-2050		REV 5		SCALE: 1:36	
APPLICATIONS		HOLES: DRILLED OR PUNCHED ±1/32		WEIGHT: 702.3 lbs.		SHEET 1 OF 1			
		BURNED ±1/32							