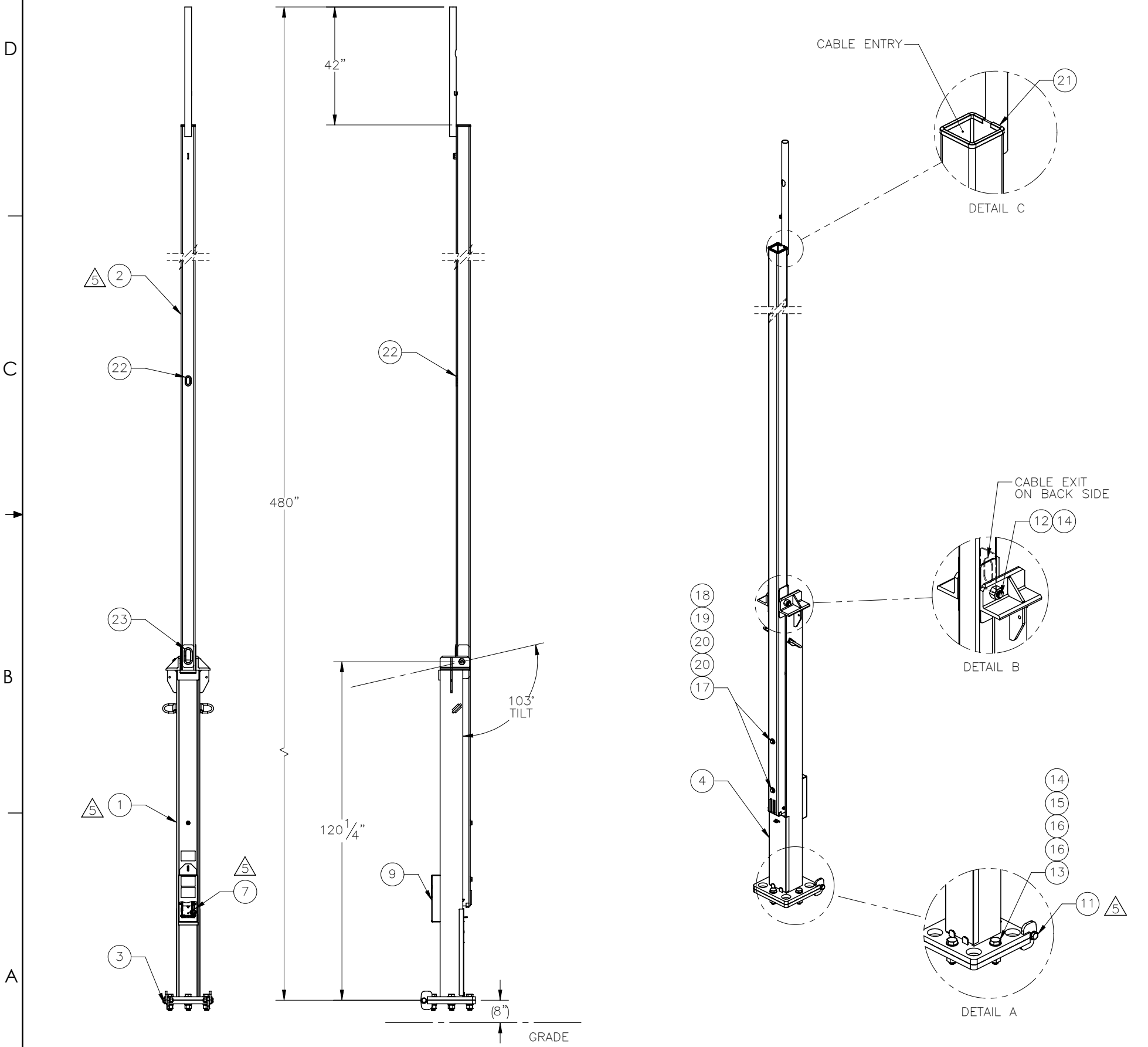


THE INFORMATION CONTAINED IN THIS DRAWING IS THE SOLE PROPERTY OF ELECTRO MECHANICAL INDUSTRIES, INC. ANY REPRODUCTION IN PART OR WHOLE WITHOUT THE WRITTEN PERMISSION OF ELECTRO MECHANICAL IND., IS PROHIBITED.

REVISIONS					
REV.	DCN #	DESCRIPTION	DATE	BY	APPROVED
5	01123	FIXED MATES DUE TO LOWER LEVEL CHANGES. .875 HINGE HW MOVED TO KIT 1000-0020-0105	05/13/2022	JTR	JPB



120 MPH EIA/TIA REV G
PATENT #: 8.910.432

ITEM NO.	QTY	PART NUMBER	DESCRIPTION	LENGTH	WEIGHT
1	1	400-004-3047-0100	SUPPORT BASE ASSEMBLY		541.34
2	1	400-004-3047-0200	MAST ASSEMBLY		550.9
3	1	400-004-5000-0130	LOWER BASE PLATE ASSEMBLY		100.1
4	1	400-004-5000-0129	FRONT COVER		7.577
5	1	400-004-5000-0072	.875 DIA. X 2.25 LG. PIN		0.36
6	1	400-004-5000-0080	4" SHEAVE ASSEMBLY		2.37
7	1	1002-0050-0005	WINCH KIT (1/4" X 27' WIRE ROPE)		1.9
8	1	400-004-3054-0071	.875" DIA. X 5.75" LG. PIN		0.956
9	1	400-004-3050-0612	WINCH COVER		8.717
10	4	002-00C-0002	COTTER PIN, .187 X 1.50 LG, GALV		0.01
11	1	1000-0020-0105	TILT-UP TOWER DUAL HINGE .875" HARDWARE KIT		2.619
12	1	002-0BG-0032	BOLT, HX HD, 1.25-7UNC X 9.00 LG, A325, GALV		3.81
13	4	002-0BG-0031	BOLT, HX HD, 1.25-7UNC X 5.00 LG, GR B7, GALV		2.38
14	5	002-0NG-0020	NUT, HX, ANCO LOCKNUT, 1.25-7UNC, GR 2H, GALV		0.79
15	4	002-0LW-G001	WASHER, SPLIT LOCK, 1.25, GALV.		0.174
16	8	002-0FW-G011	WASHER, FLAT, 1.25, ASTM F436, GALV		0.13
17	2	002-0BG-0007	BOLT, HX HD, .75-10UNC X 8.00 LG, A325, GALV		1.16
18	2	002-0NG-0002	NUT, HX, .75-10UNC, GR 2H, GALV		0.19
19	2	002-0LW-G003	WASHER, SPLIT LOCK, .75", GALV		0.04
20	4	002-0FW-G000	WASHER, FLAT, .75 INCH, USS, GALV		0.09
21	1	309-000-0001-16	EDGE GUARD, .25, 16" LG.	16"	0.1
22	1	309-000-0001-08	EDGE GUARD, 3/16", 8" LG.	8"	0.0
23	1	309-000-0002-13	EDGE GUARD, 1/2", 13" LG.	13"	0.082
24	2	999-999-L001	3.5" x 5" DO NOT CLIMB DECAL		0.006
25	2	999-999-L002	3.5" x 5" PINCH POINT DECAL		0.006
26	1	999-999-L003	3.5" x 5" WINCH RATING DECAL		0.006

SURFACE FINISH <input checked="" type="checkbox"/> UNLESS OTHERWISE SPECIFIED		UNLESS OTHERWISE SPECIFIED DIMENSIONS ARE IN INCHES		APPROVALS		DATE		ELECTRO MECHANICAL INDUSTRIES, INC. 11230 NEESESHAW DRIVE HOUSTON, TEXAS 77065 1-800-453-0050	
MATERIAL SEE PARTS LIST		TOLERANCES .0 ±.06 .00 ±.015 .000 ±.005 FRACTIONS ± 1/16 ANGLES ± .25° HOLES: DRILLED OR PUNCHED ± 1/32 BURNED ± 1/32		DRAWN C. SANCHEZ 8/10/2012		DATE 8/10/2012			
THIRD ANGLE PROJECTION				CHECKER R. AVELAR 8/10/2012		ENGINEER VG DUVAL 8/10/2012		SIZE B	
NEXT ASSY		USED ON		PRODUCTION J. SUNDERLAND 8/10/2012		DRAWING NO. 400-004-3047		REV 5	
APPLICATIONS				SCALE: 1:40		WEIGHT: 1239.2 lbs.		SHEET 1 OF 1	