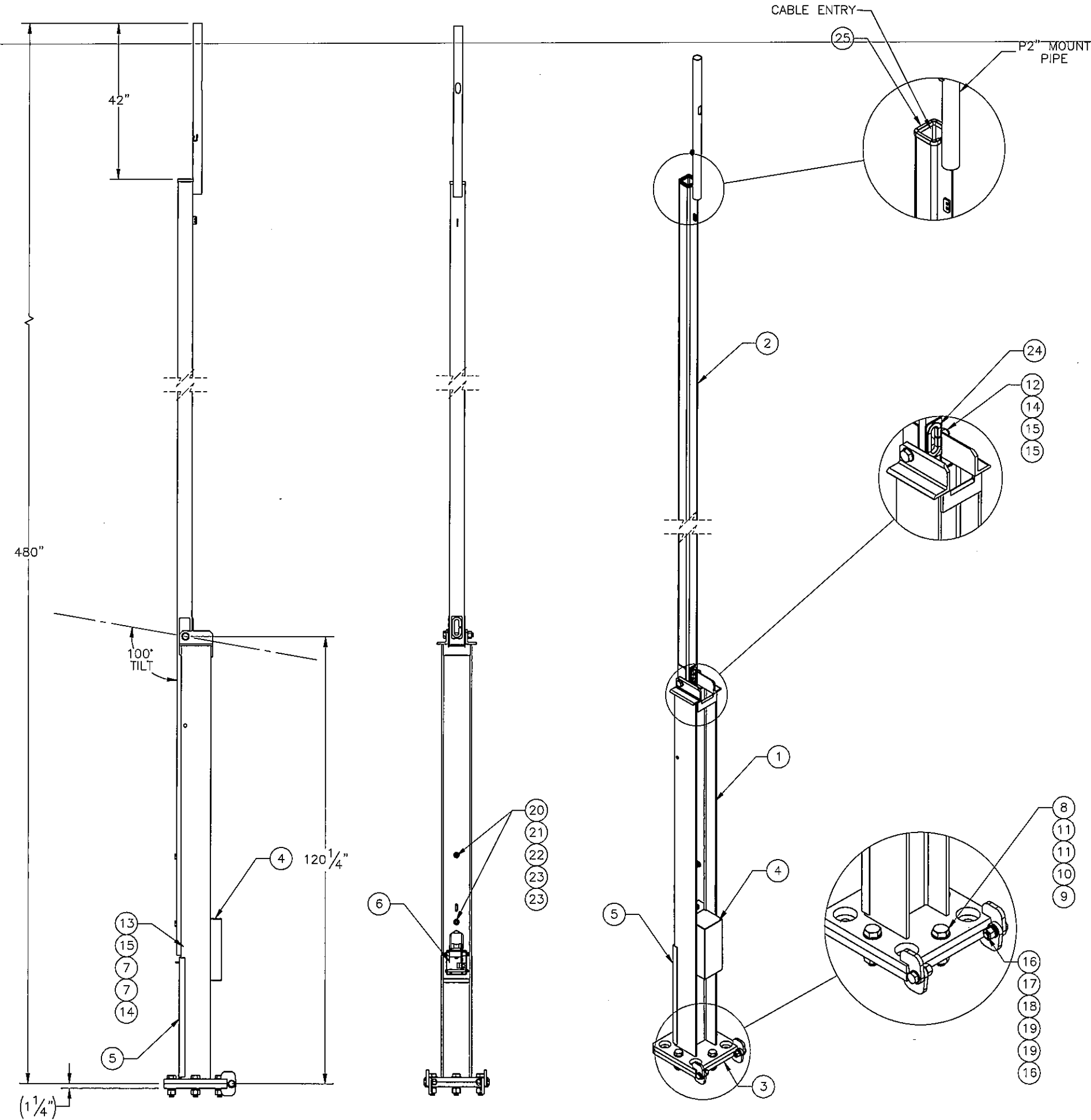



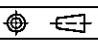
THE INFORMATION CONTAINED IN THIS DRAWING IS THE SOLE PROPERTY OF ELECTRO MECHANICAL INDUSTRIES, INC. ANY REPRODUCTION IN PART OR WHOLE WITHOUT THE WRITTEN PERMISSION OF ELECTRO MECHANICAL IND., IS PROHIBITED.

REVISIONS					
REV.	DCN #	DESCRIPTION	DATE	BY	APPROVED
7	DCN00869	ADDED SAFETY DECALS AND UPDATE PART NUMBER	2020.06.25	BLH	JPB



110 MPH EIA/TIA REV G
PATENT # 8,910,432

ITEM NO.	QTY	PART NUMBER	DESCRIPTION	LENGTH	WEIGHT
1	1	400-004-3049-0600	SUPPORT BASE		462.02
2	1	400-004-3049-0200	MAST ASSEMBLY		515.37
3	1	400-004-5000-0130	LOWER BASE PLATE ASSEMBLY		100.1
4	1	400-004-3050-0612	WINCH COVER		8.74
5	1	400-004-3050-0629	FRONT COVER - NOTCHED		8.00
6	1	1002-0050-0003	WINCH KIT (1/4" X 14' WIRE ROPE)		8.7
7	2	400-000-0902	1" SCH. 40 PVC SLEEVE		0.024
8	4	002-0BG-0031	BOLT, HX HD, 1.25-7UNC X 5.00 LG, GR B7, GALV		2.38
9	4	002-0NG-0020	NUT, HX, ANCO LOCKNUT, 1.25-7UNC, GR 2H, GALV		0.79
10	4	002-0LW-G001	WASHER, SPLIT LOCK, 1.25, GALV.		0.174
11	8	002-0FW-G011	WASHER, FLAT, 1.25, ASTM F436, GALV		0.13
12	1	002-0BG-R030	BOLT, HX HD, 1.00-8UNC X 7.50 LG, A325, GALV.		2.01
13	1	002-0BG-0051	BOLT, HX HD, 1.00-8 X 5.50 LG, A325, GALV.		1.57
14	2	002-0NG-0000	NUT, HX, ANCO LOCK, 1.00-8UNC, GR 2H, GALV		0.43
15	3	002-0FW-G009	WASHER, FLAT, 1.00", F436, GALV.		0.08
16	2	002-0BG-0040	BOLT, HX HD, .875-9UNC X 3.00 LG, ASTM A325, GALV		0.75
17	2	002-0NG-0009	NUT, HEX, .875-9UNC, GR 2H, GALV		0.29
18	2	002-0LW-G007	WASHER, SPLIT LOCK, .875, GALV		0.06
19	4	002-0FW-G008	WASHER, FLAT, .875, ASTM F436, GALV		0.09
20	2	002-0BG-0237	BOLT, HX HD, .75-10UNC X 7.00 LG, A325, GALV.		1.06
21	2	002-0NG-0002	NUT, HX, .75-10UNC, GR 2H, GALV		0.19
22	2	002-0LW-G003	WASHER, SPLIT LOCK, .75", GALV		0.04
23	4	002-0FW-G003	WASHER, FLAT, .75", F436, GALV		0.03
24	1	309-000-0002-11	EDGE GUARD, 1/2", 11" LG.	11"	0.071
25	1	309-000-0005-11	EDGE GUARD, 5/16", 11" LG.	11"	0.064
26	2	999-999-L001	3.5" x 5" DO NOT CLIMB DECAL		0.01
27	2	999-999-L002	3.5" x 5" PINCH POINT DECAL		0.01
28	1	999-999-L003	3.5" x 5" WINCH RATING DECAL		0.01

SURFACE FINISH <input checked="" type="checkbox"/> UNLESS OTHERWISE SPECIFIED		UNLESS OTHERWISE SPECIFIED DIMENSIONS ARE IN INCHES		APPROVALS		DATE		 ELECTRO MECHANICAL INDUSTRIES, INC. 11230 NEEDSHAW DRIVE HOUSTON, TEXAS 77065 1-800-453-0050	
MATERIAL	SEE PARTS LIST	TOLERANCES		DRAWN	CG	10.20.10	TITLE:		
THIRD ANGLE PROJECTION		.000 ± .06 .000 ± .01 .000 ± .005		CHECKED	CS	6.01.11	40 FT TILT UP TOWER		
		FRACTIONS ± 1/16 ANGLES ± .25°		ENGINEER/DESIGNER	CG	10.20.10	REV		
NEXT ASSY	USED ON	HOLES:		PRODUCTION	JKS	6.01.11	SIZE	DRAWING NO.	REV
		DRILLED OR PUNCHED ± 1/32 BURNED ± 1/32		JKS			B	400-004-3049	7
APPLICATIONS				SCALE: 1:30		WEIGHT: 1127.57 lbs.		SHEET 1 OF 1	